

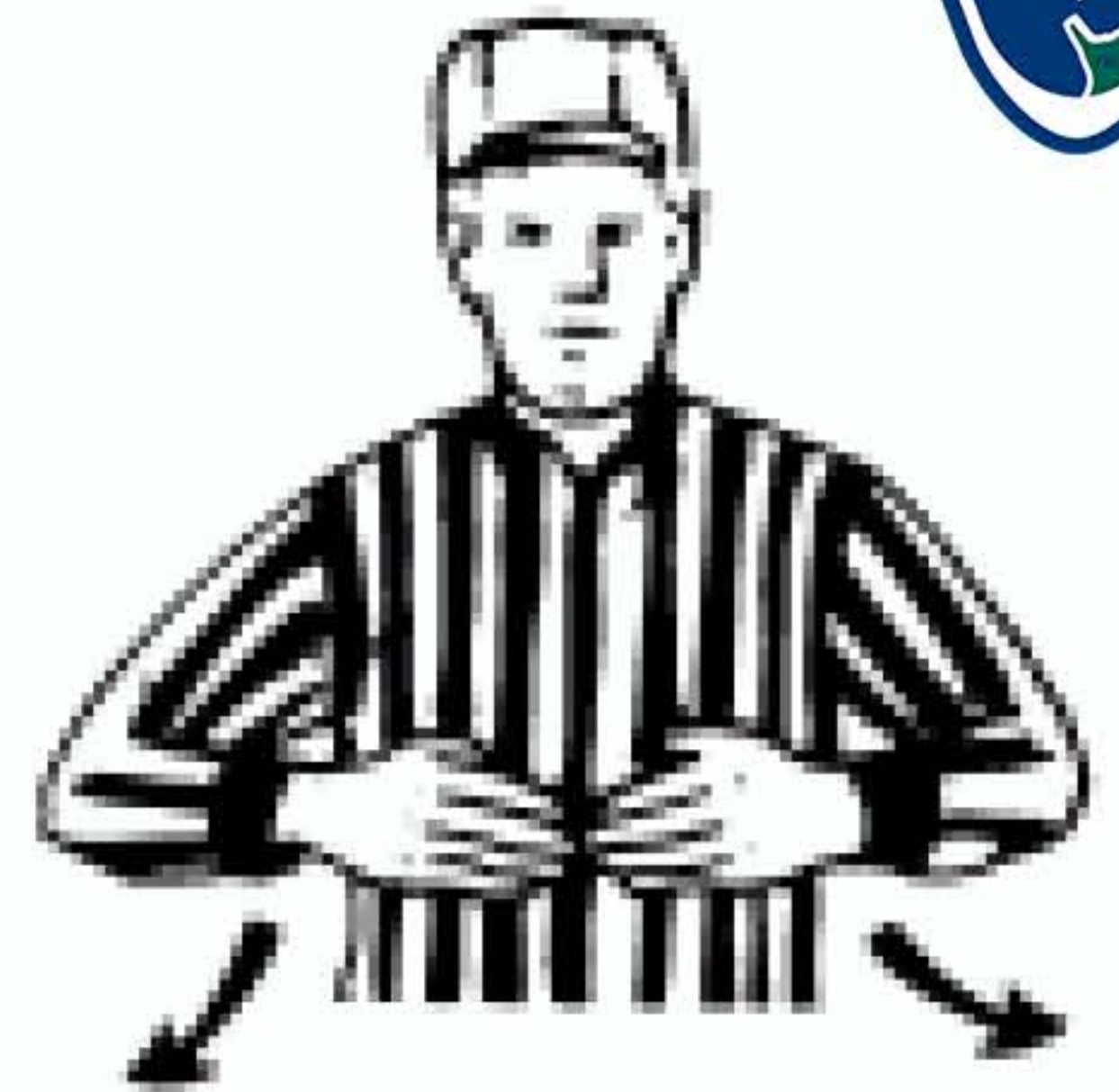
# Procedural Signals



Time Out



Goal



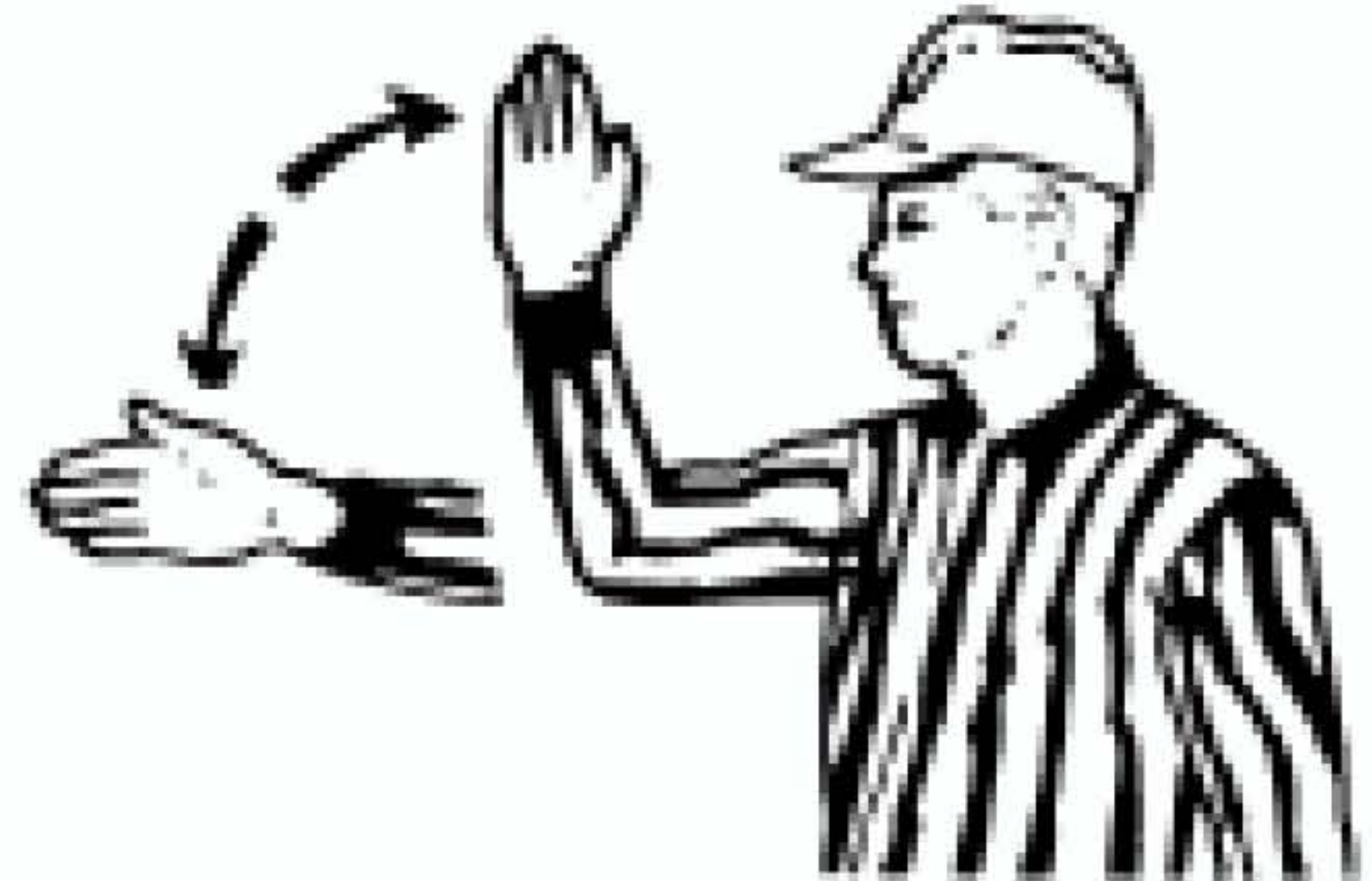
Face Off



Possession



No Goal



Out of Bounds  
Direction of Play



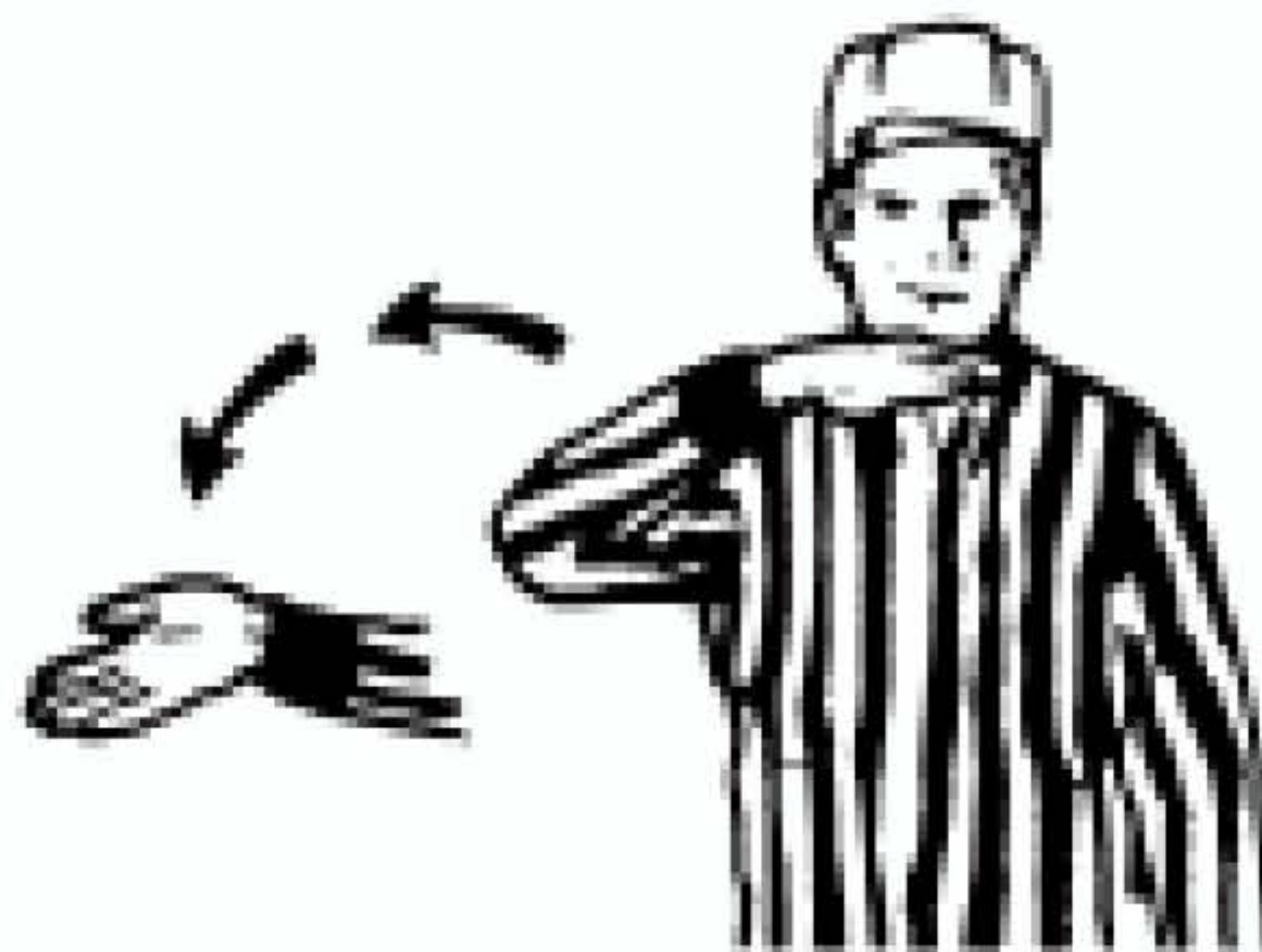
Loose Ball



Simultaneous Fouls



Play On



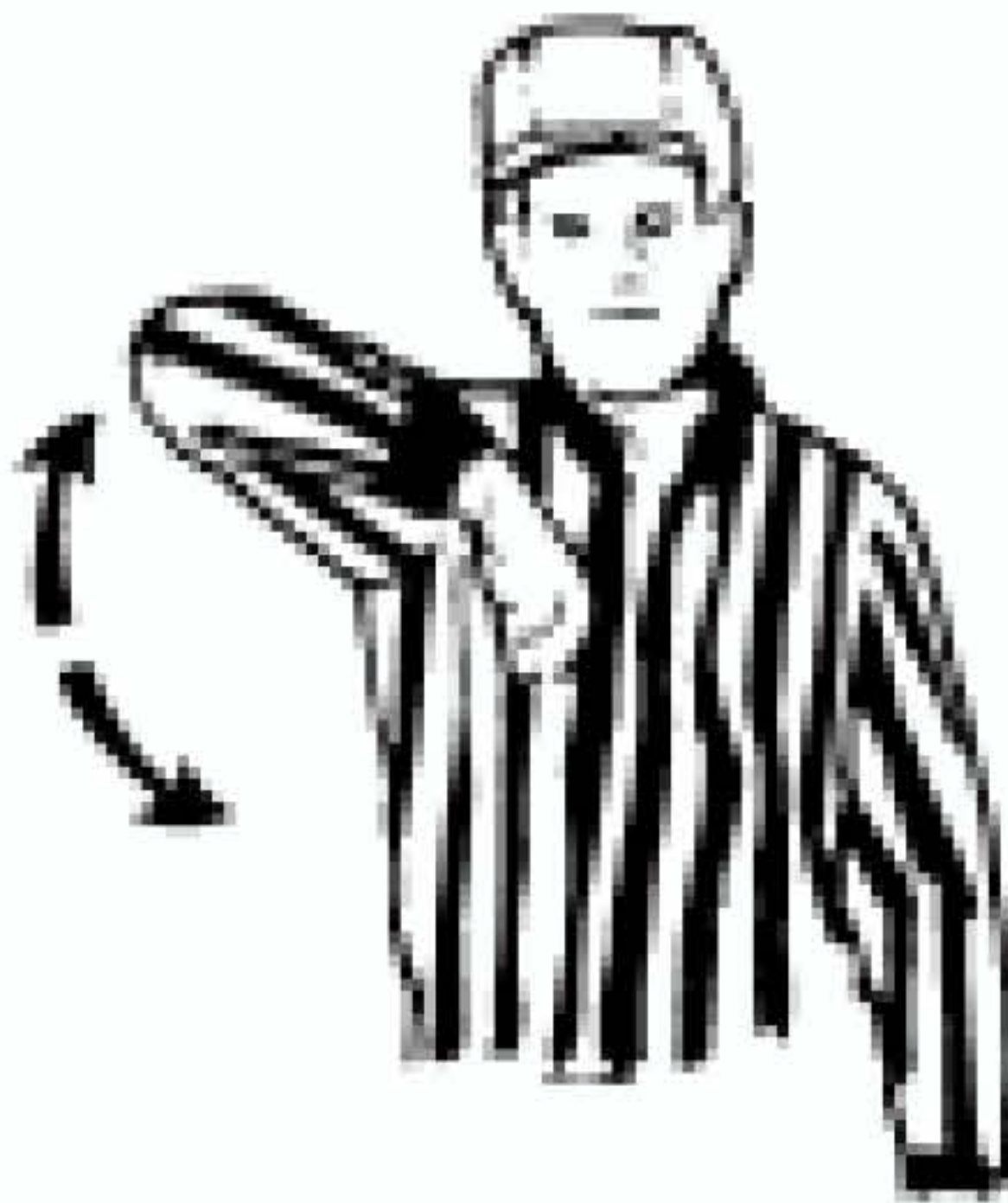
Re-entry of the Crease



# Personal Foul Signals



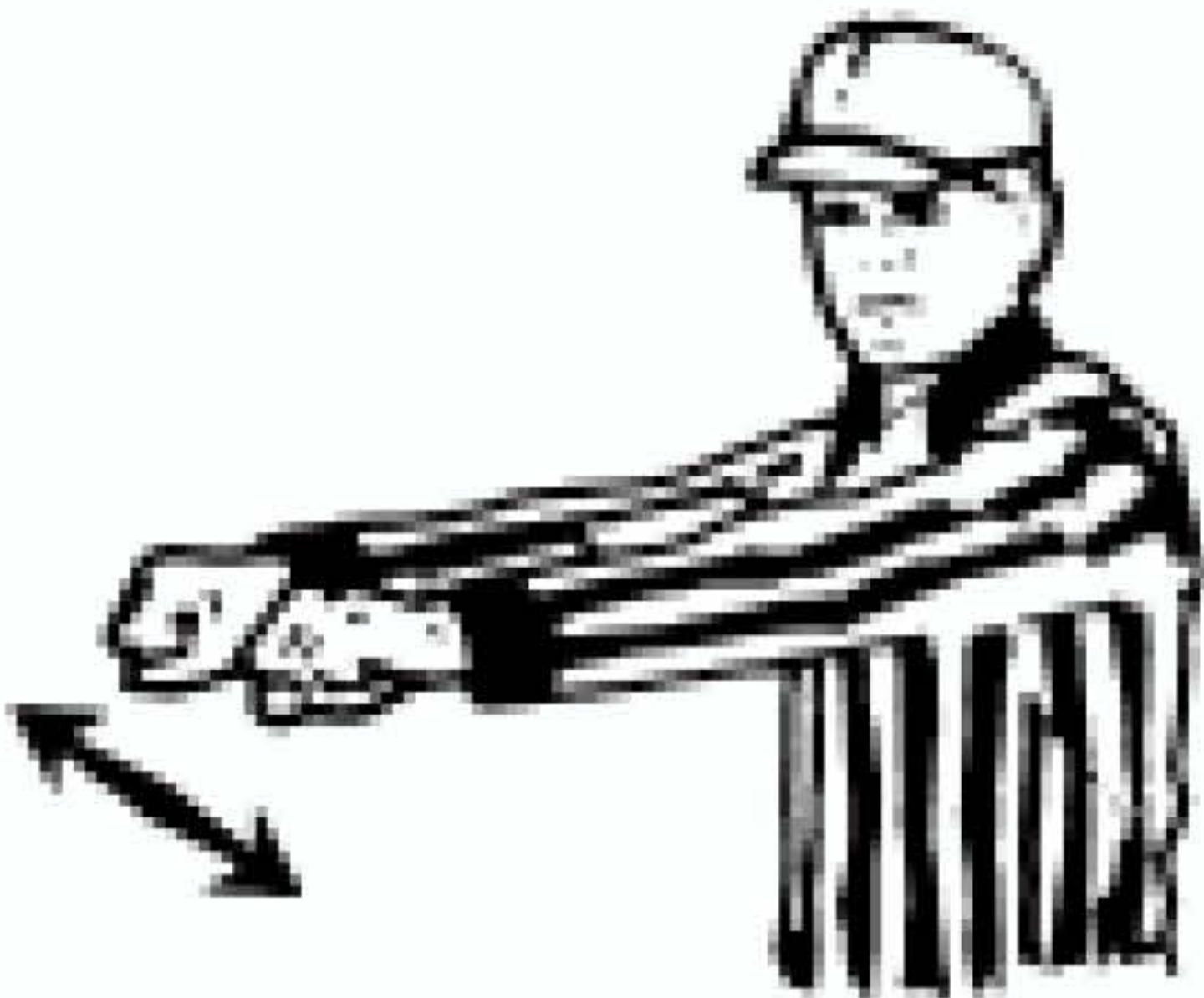
1 Minute



Illegal Body Check



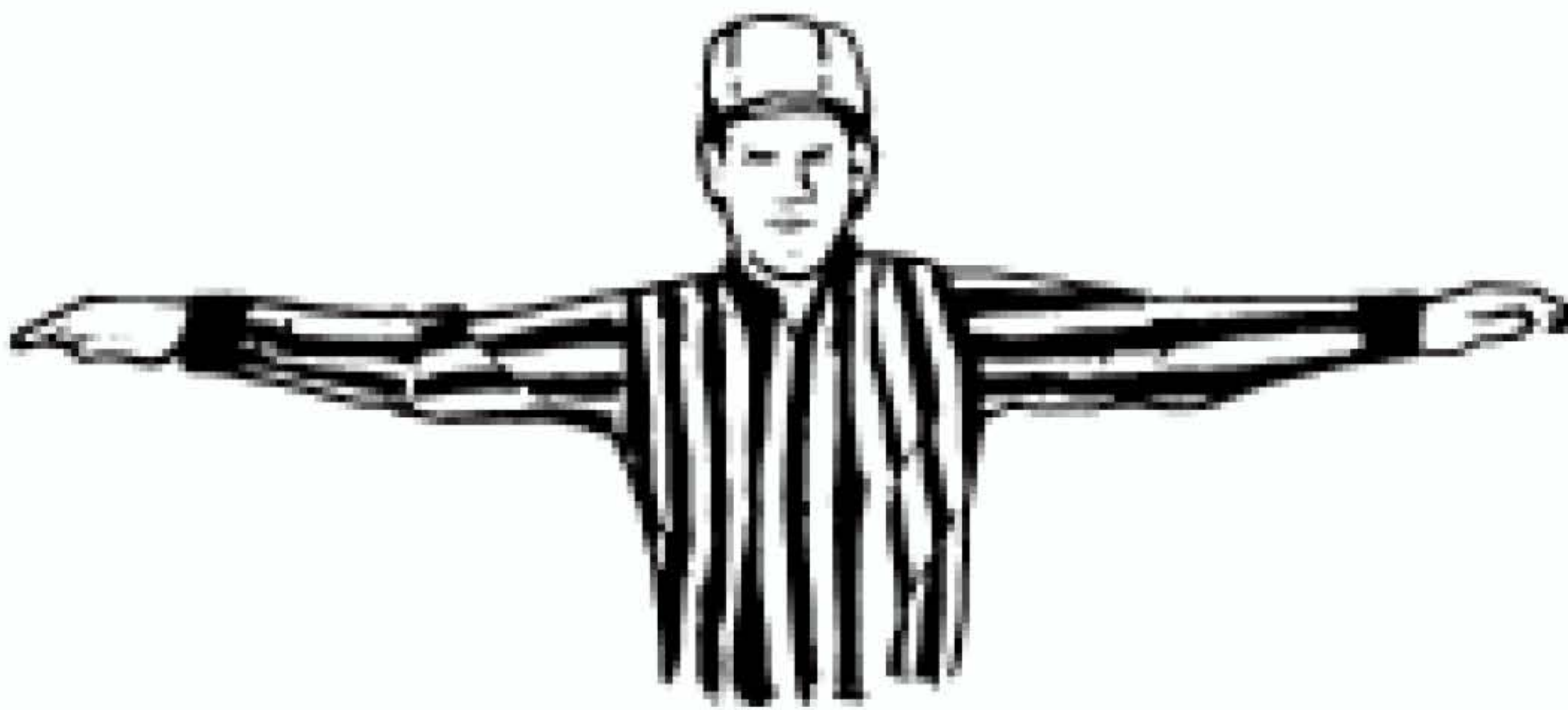
Slashing



Cross Check



Tripping



Unsportsmanlike Conduct



Expulsion



# Technical Foul Signals



Tech Foul – 30 secs



Interference



Illegal Offensive Screening –  
Illegal Pick



Holding



Warding Off



Pushing



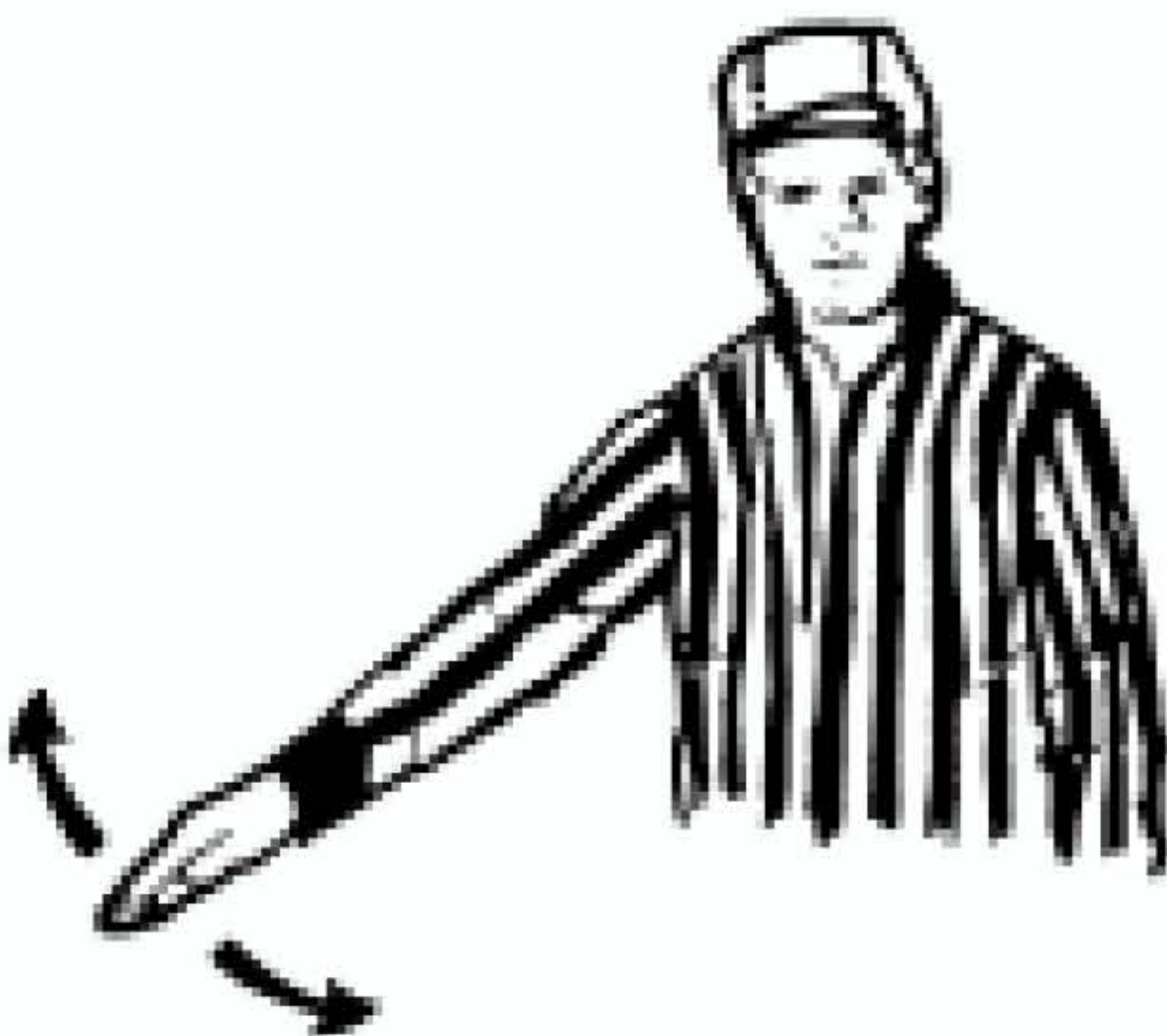
Withholding the Ball



Illegal procedure



Offside



Crease Violation



Illegally Touching the Ball