

DashLink Install Guide

Contents

- Page 2** Requirements
- Page 3** Step 1: Locate the diagnostic port of the vehicle
- Page 3** Step 2: Connect the adapter cable to the diagnostic port
- Page 4** Step 3: Connect the adapter cable to the DashLink device
- Page 5** Step 4: Attach the DashLink device to the vehicle
- Page 6** Step 5: Configure BigRoad Truck for DashLink
- Page 7** Step 6: Driver card and paper logbook
- Page 8** Troubleshooting



Requirements



BigRoad DashLink device



Adapter cable



Android device with BigRoad app version 4.0.8 or higher



(optional) Cable ties



(optional) Industrial quality hook & loop tape, length 3.75" (9.5cm) width 1" (2.5cm)

Step 1: Locate the diagnostic port of the vehicle

The diagnostic port is a 9-pin (or 6-pin) connector.

It is located under the dash to the left or right of the steering column, or to the left of the driver's seat:



Step 2: Connect the adapter cable to the diagnostic port

Rotate the collar to align the collar tabs with the matching slot on the diagnostic port, press firmly until the adapter cable is fully connected, then rotate the collar clockwise until it clicks:



Step 3: Connect the adapter cable to the DashLink device

Plug in the male DB15 connector on the adapter cable to the female DB15 connector on the DashLink device. Rotate to fully tighten the plastic screws.

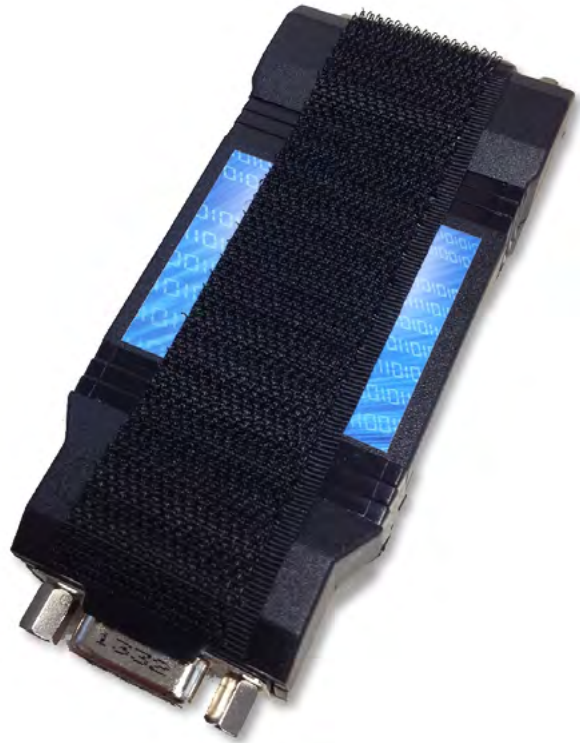


Step 4: Attach the DashLink device to the vehicle

The installation location should be chosen to ensure the DashLink device and the adapter cable do not obstruct the driver. For example, underneath the dash attached using cable ties, or attached using hook & loop tape on a flat bare section on top of or on the front of the dash.

To use hook & loop tape apply a 3.75" (9.5cm) length of hook tape to the VNA-BT (avoid obscuring the printed device ID value):

Clean and dry your chosen location on the dash, apply the loop tape, then attach the DashLink device.



Tidy the installation

If there is any loose cabling tie it off with cable ties. Be careful to avoid obstructing the driver.

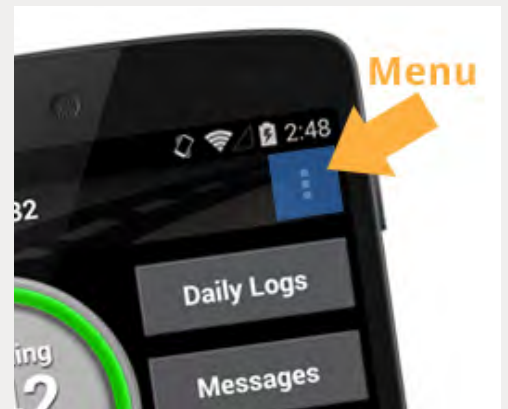


Step 5: Configure BigRoad Truck for DashLink

- 1 Launch the BigRoad application on an Android device and sign in to your fleet.
- 2 If the vehicle has previously been added to the BigRoad account for your fleet, then ensure it is selected in the mobile app by pressing the menu button, choosing "Switch Truck" and selecting the truck.

Otherwise add a new truck:

- a. Press the menu button
- b. Choose "Switch Truck"
- c. Press "Add"
- d. Enter the correct truck number, license plate and odometer units (miles/km)
- e. Press "Add Truck"



- 3 Navigate to the DashLink screen by pressing the menu button, choosing "Settings", then "DashLink".
- 4 Turn on the vehicle.
- 5 Press "Connect DashLink".
- 6 Ensure the DashLink device is found and the VIN that is shown matches the VIN of the vehicle. If no VIN is shown then ensure the device ID that is shown matches the value printed on the DashLink device. If the VIN or device ID does not match then choose "Skip" until the correct DashLink device is shown.



Step 5: Configure BigRoad Truck for DashLink continued...

- 7 Press "Connect".
- 8 Verify the reported odometer matches the odometer value on the instrument cluster of the truck. If not then enter the correct value.
- 9 Verify the DashLink connection is correctly established (may take up to 60s).

Step 6: Driver card and paper logbook

- 1 Go to www.bigroad.com/driver-card and **download** the "AOBRD Driver Card". **Print** a copy and **put it in the vehicle**. This card must be shown during a roadside inspection. Failure to provide it can result in fines and/or violations.

This is one of the primary sources of violations for AOBRD users during a roadside inspection. BigRoad suggests that you laminate the driver card and affix it to the truck. Inspectors will generally not accept electronic copies of the driver card.

- 2 Ensure the driver has a paper logbook with at least 14 days of available forms. This logbook must be shown during a roadside inspection and failure to provide it can result in fines and/or violations.



Troubleshooting

BigRoad app does not find the DashLink device

If the BigRoad mobile app is not able to find the installed DashLink device then ensure:

- 1** The adapter cable is correctly connected to the DashLink device
- 2** The adapter cable is fully connected to the diagnostic port of the vehicle and the collar is locked
- 3** The vehicle is on
- 4** You are running the most recent version of BigRoad on your Android device
- 5** Bluetooth is enabled on your Android device
- 6** Your Android device is plugged into a charger
- 7** Ensure the vehicle you are in is properly configured in BigRoad. Have an admin or dispatcher visit app.bigroad.com/trucks, click on the truck number, then compare that VIN with the VIN of the vehicle. If the vehicle is configured with a DashLink Device ID then compare the ID in BigRoad to the ID printed on the DashLink device.



Troubleshooting continued...

BigRoad app is stuck "Reading data from DashLink device"

Some older Android devices have unreliable Bluetooth support. Rebooting the device should allow the DashLink connection to succeed.

BigRoad app indicates "The DashLink device was unable to read the odometer"

Ensure that the vehicle is on. If the issue persists it may be because the vehicle does not report an odometer value on the diagnostic port. This is the case for many Hino heavy trucks, and some older vehicles from other manufacturers. Please contact BigRoad support (support@bigroad.com) for options.

The DashLink device periodically becomes unavailable while in the vehicle

Ensure that your Android device is plugged into a charger while using a DashLink vehicle.

Troubleshooting continued...

The collar of the diagnostic plug is difficult to lock

It is important the the collar of the diagnostic plug is locked to ensure the device does not become disconnected during operation. A flathead screwdriver can be used in the gaps on the collar:

