

BIGROAD MOBILE APP WITH DASHLINK CONNECTION

DASHLINK ELD CERTIFICATION

The BigRoad Mobile App used with DashLink complies with ELD mandate requirements defined by the FMCSA in 49 CFR part 395 Subpart B when used as instructed in the user guide.



ADDRESSING ELD MALFUNCTIONS

HOW DO I KNOW I HAVE A MALFUNCTION?



When a red X is shown on the DashLink icon in the app.

WHAT DO I DO DURING AN ELD MALFUNCTION?

In the event of an ELD malfunction, a driver must:

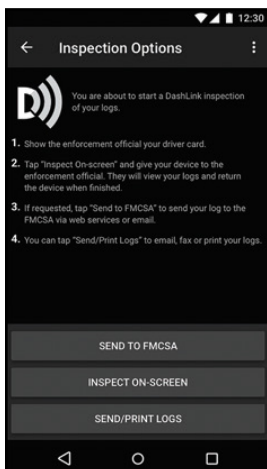
1. Call BigRoad Support at 1-888-305-8777 ext. 1 to troubleshoot the issue.
2. Note the malfunction of the ELD and provide written notice of the malfunction to your motor carrier within 24 hours.
3. Reconstruct paper records of the duty status (RODS) for the current 24-hour period and the previous 7 consecutive days.
4. Continue to manually prepare RODS in accordance with 49 CFR 395.8 until the ELD is serviced and back in compliance.

WHAT DOES MY MOTOR CARRIER NEED TO DO DURING AN ELD MALFUNCTION?

If an ELD malfunctions, a motor carrier must:

1. Correct, repair, replace or service the malfunctioning ELD within 8 days of discovering the condition.
2. If the malfunction cannot be resolved by BigRoad Support, a new DashLink will be provided.
3. Require the driver to maintain paper record of duty status (RODS) until the ELD is back in service.
4. If more time is required to resolve the issue, the carrier must notify their State FMCSA Division Administrator as part of S395.34(2). For non-US operators, this can be the nearest State.

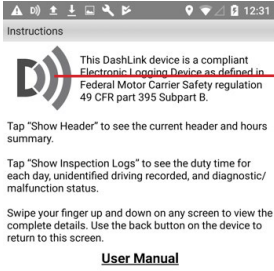
DRIVER OPERATION & INSPECTION INSTRUCTIONS



1. Tap **Logs** twice from the bottom menu bar, tap **Inspect Logs** and pick the number of days to inspect.
2. To submit logs to the FMCSA, tap **Send to FMCSA**.
 - a. Pick from **Via web services** or **Via email**, depending on the officer's request.
 - b. Type in the output file comment that the inspector provides you with.
 - c. Click **Send** and the inspector will receive the file.
 - d. If the file cannot be sent due to a connectivity issue, an on-screen inspection must be done.
3. To show logs on-screen, tap **Inspect On-Screen**.
 - a. You should see a DashLink logo and instructions to start an ELD inspection.
 - b. If the optional **Inspection Lock** is enabled, enter a lock code twice.
 - c. Give the inspector your device and this instruction card.

[Click here to access our ELD User Manual](#)

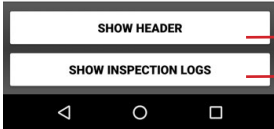
DASHLINK ELD INSPECTOR'S GUIDE



The **DashLink logo** verifies that the hardware is engine-connected and functioning correctly. If you do not see the logo, the driver is not using an ELD.

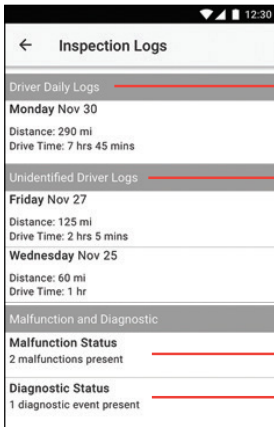


If you see this icon on the inspection screen, then the DashLink device is malfunctioning. When malfunctioning, the driver will show you paper logs for the drive time that transpired during the malfunction. Logs prior to the malfunction can be viewed on the phone or tablet.



Tap **Show Header** to see a summary of the driver's hours-of-service information.

Tap **Show Inspection Logs** to see daily log details.



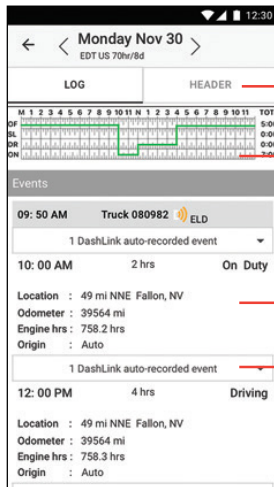
Tap any day to see detailed logs for that day.

Tap to review any unclaimed unidentified driving.

The **Malfunction Status** screen will show any ELD malfunctions and how long they have been occurring.

The **Diagnostic Status** screen will show if any ELD diagnostic issues are occurring.

Note: *Diagnostic events do not indicate a malfunctioning ELD. Many diagnostics are transient and expected.*



Tap the **Header** button to view a list of vehicles, trailers, and other information for this log day.

The **graph grid** shows the driver's drive, on-duty, off-duty, and sleeper berth time for the day.

Each **duty status event** is listed with duration, location, and vehicle odometers/hours, when available.

Tap the **DashLink auto-recorded** events sections to see details of non-duty status events recorded by the ELD.