



Personal Tracker P100

A reliable solution to safeguard your vulnerable mobile staff from at-work hazards and safety risks

Does your company employ staff who often operate alone or in remote locations? Does your organization deal with first response or maintaining public order? The state-of-the-art Personal Tracker solution will help ensure the safety of your employees any time and anywhere.

This comprehensive solution incorporates sensor readings, location tracking, and reporting modes that scale to your immediate needs and requirements. With cellular communication (2G/3G) for remote monitoring, you get near real-time visibility of your entire in-field personnel on one interface. It also integrates seamlessly with the Fleet Complete platform for a holistic overview of your fleet and mobile staff for safe and secure operations.

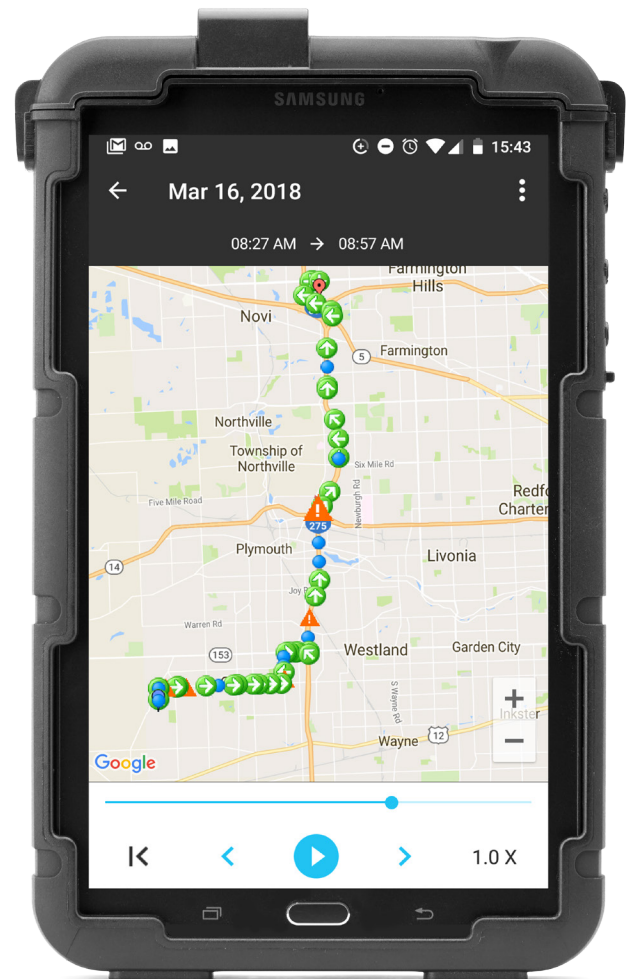
Employee in distress

Personal Tracker PT100 devices provide quick and intuitive way to indicate distress in emergency situations. Activating a panic button, or relying on the 3D accelerometer profile that automatically indicates man-down (prolonged inactivity) modes, will immediately alert the head office of duress and where it is coming from to allow ample time to send help on its way.

The device also enables the monitoring of workers' location, health statuses, and general activity, such as check-in/checkout and movement.

Functionality

- › **Batter Charge:** A single charge can last 10 – 24 hours, depending on the transmission frequency and the amount of movement.
- › **Capabilities:** The device notifies of impact or free fall movement or standstill, check-in or check-out
- › **Integration:** Fully integrated cross-platform display for optimal visibility and safety monitoring.



Technical specifications:

- | | |
|---|--|
| › PT100 device: small, lightweight device | › Sensitivity (tracking): -165dBm |
| › Network: 2G/3G cellular, 2.4GHz wireless communication | › Accelerometer: 3D, 38g range, 4mg resolution, I2C interface, detection of stationary or movement state |
| › Environment: Motion activated sensors, Internal antenna | › Impact: Impact/Free fall with threshold up to 8g |
| › Battery: Li-Ion Polymer, 3.7V, 1000mAh, rechargeable | › Temperature: -4°F to +140°C full performance |

Contact your Regional Sales Manager for more information.