

Setting Up Inspection Screen Lock



CONTACT

P: 1.888.305.8777 ext. 1
E: support@bigroad.com

CONTENTS

Overview	p.1
Start the inspection	p.2
Create the PIN code	p.3
Exit Inspection mode	p.4
Forgot your PIN code?	p.5

Overview

You can use this security feature when you are presenting your logs to the inspector on your personal mobile device. The Inspection Lock allows you to disable the view of all other information when handing over your device to the inspector. It limits the inspector's view to Inspection screens of the BigRoad app only.

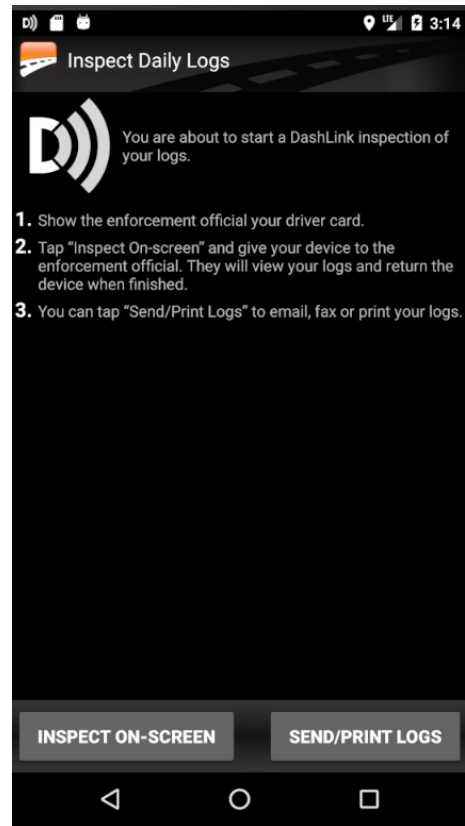
You can use a different PIN for other inspections and you will only need to remember it for the duration of the one you have now.

Tip! You have the option to turn the PIN feature off if you do not want to use it.

Let's get started – you will need to type a one-time PIN combination of 4 digits to lock and unlock the application. Keep reading to follow the steps!

01. Start the Inspection

Follow these steps to set up
your inspection screen lock.

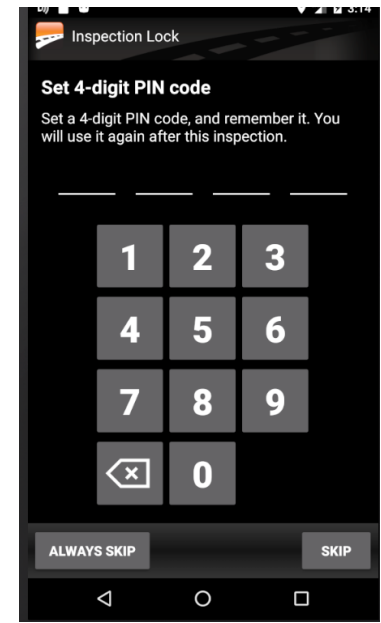


Tap the **INSPECT ON-SCREEN** button to proceed to the inspection of your logs

02. Create the PIN code

Setting the PIN code

- If you would like to use the Lock feature, type a 4-digit PIN code that you will use for this inspection
- If you prefer not to, tap the **SKIP** button



- Re-type the PIN code to confirm

When creating a PIN, make sure that you put in a combination that you will easily remember for the duration of this inspection. You will need it again to unlock the application after the inspection is complete.



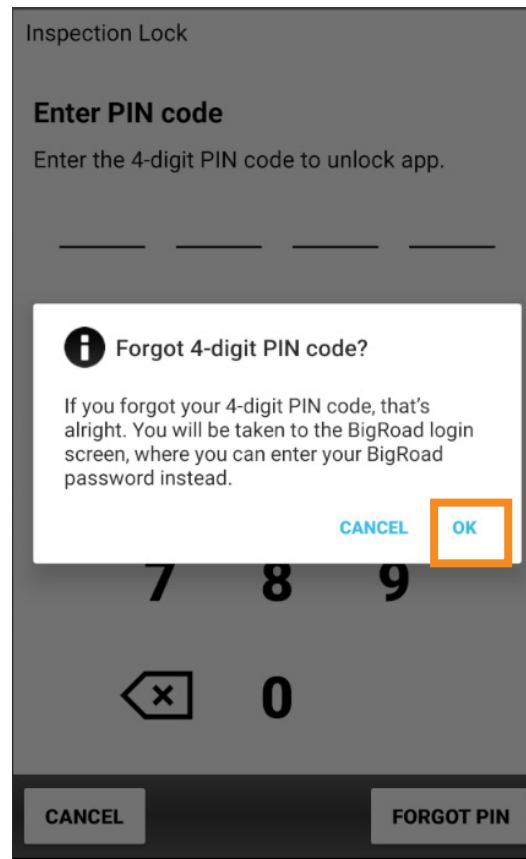
03. Exit Inspection mode

Inspection Mode

- The Inspection screen will appear, where the inspector will view your logs.
- Type the 4-digit PIN code that you created and you can hand your device to the inspector
- After the inspection is complete, the inspector will return your mobile device
- To get back into the BigRoad app, type the PIN code again to exit Inspection mode



04. Forgot your PIN code?



Forgot your PIN code?

Tip! you can easily get back into the BigRoad app. Here is how:

- Tap the **FORGOT PIN** button
- Tap the **OK** button – this will log you out of the inspection mode and the BigRoad app
- Log back into the BigRoad app using your **username** and **password**

Congratulations!

YOU'VE DONE IT

You've successfully set up your PIN code and now you're ready for inspection!

If you have any questions, feel free to contact the BigRoad Support Team. You can reach them at:

PHONE

1-888-305-8777 x 1

EMAIL

support@bigroad.com