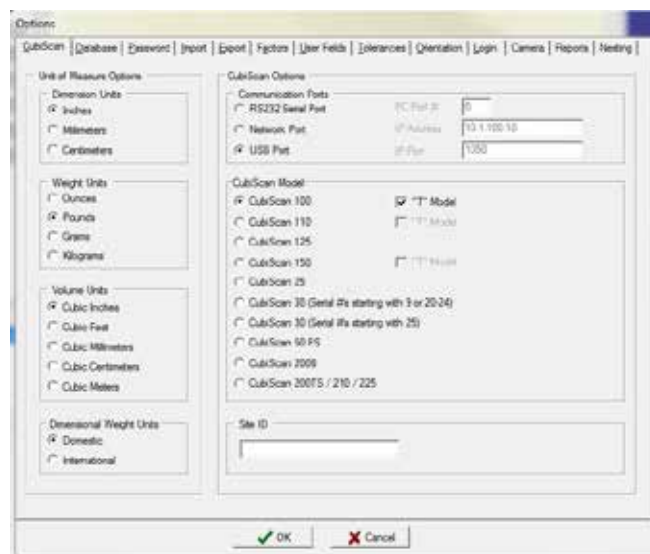


# CUBISCAN 100-T QBIT-DB SETUP

## QUICK REFERENCE GUIDE

This quick reference guide provides instructions for setting up Qbit-DB to connect to a Cubiscan. For more detailed instructions, see the *Cubiscan Qbit-DB User Guide*.

- 1 › Make sure that Qbit-DB is installed on your computer.
- 2 › Connect your computer to the Cubiscan. See your Cubiscan manual for more information on connecting a Cubiscan to a computer.
- 3 › Open Qbit-DB and go to **Tools > Options > Cubiscan**.
- 4 › Select the **Cubiscan 100** as your Cubiscan model. Enable the **"T" Model** box.
- 5 › Under Communication Ports, select **USB Port**.



- 6 › When you are finished, click **OK**.

Your Cubiscan should now be connected to Qbit-DB.