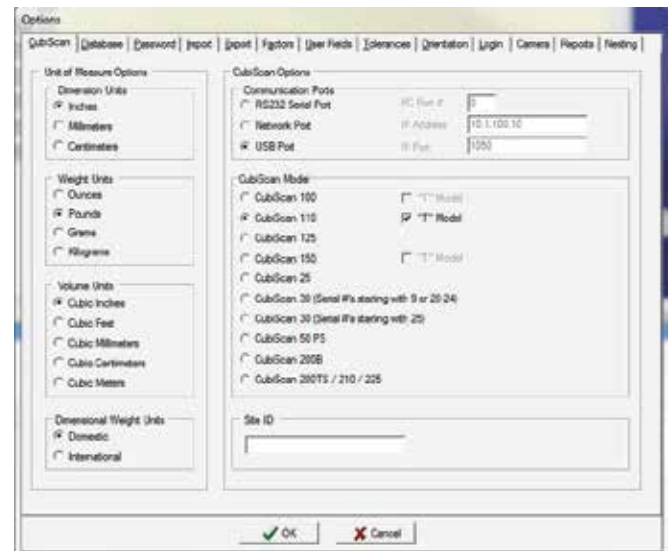


# CUBISCAN 125 QBIT-DB SETUP

## QUICK REFERENCE GUIDE

This quick reference guide provides instructions for setting up Qbit-DB to connect to the Cubiscan 125 using the default serial connection. For more detailed instructions, see the *Cubiscan Qbit-DB User Guide*.

- 1 › Make sure that Qbit-DB is installed on your computer.
- 2 › Connect your computer to the Cubiscan 125 using the serial cable and adapter included with your Cubiscan.
- 3 › Check which serial port you are using under **Control Panel > Device Manager > Ports**. You will enter this port number into Qbit-DB in a later step.
- 4 › Open Qbit-DB and go to **Tools > Cubiscan**.
- 5 › Select the Cubiscan 125 as your model.
- 6 › Select the RS232 Serial Port as your communication option.
- 7 › Enter the port number you looked up in step 3 into the PC Port # field.
- 8 › When you are finished, click **OK**.



Your Cubiscan should now be connected to Qbit-DB.