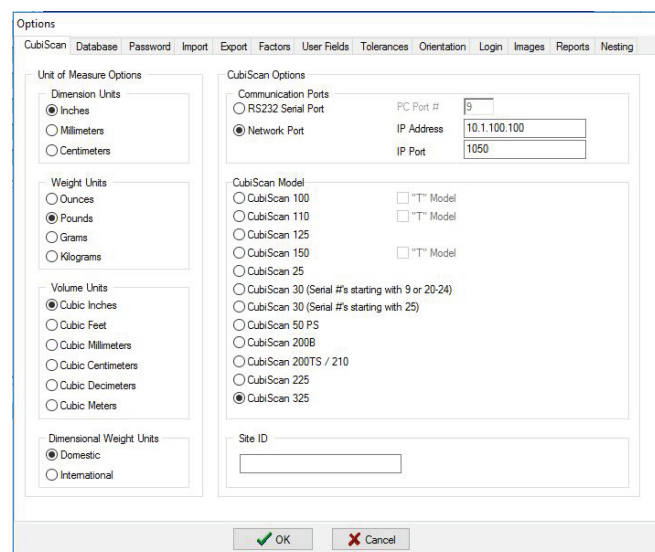


CUBISCAN 325 QBIT-DB SETUP

QUICK REFERENCE GUIDE

This quick reference guide provides instructions for setting up Qbit-DB to connect to a Cubiscan 325. For more detailed instructions, see the *Qbit-DB User Guide*.

- 1 › Make sure that Qbit-DB is installed on your computer.
- 2 › Connect your computer to the Cubiscan. See your Ethernet Setup quick reference guide or Cubiscan manual for more information on connecting a Cubiscan to a computer.
- 3 › Open Qbit-DB and go to **Tools > Cubiscan**.
- 4 › Select the **Cubiscan 325** as your Cubiscan model.
- 5 › Enter the default IP Address of **10.1.100.100** and the default IP Port setting of **1050**.



- 6 › When you are finished, click **OK**.

Your Cubiscan should now be connected to Qbit-DB.

