

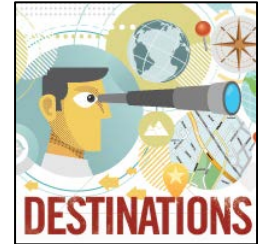
FOR IMMEDIATE RELEASE
August 18, 2017

FOR MORE INFORMATION CONTACT:
Pastor Martin Hawley @ 631-909-8241
pastorhawley@sbbcli.org

South Bay Bible Church Announces New Sermon Series “Destinations: The Principle of the Path”

Starting Sunday, September 17, South Bay Bible Church will begin a new sermon series entitled “Destinations: The Principle of the Path.” You win or lose by the path you choose.

EAST MORICHES, NY – You win or lose by the path you choose. On National Back to Church Sunday, September 17 at 8:00, 9:30, and 11:00 a.m., South Bay Bible Church will begin a new, four-part series entitled, “Destinations: The Principle of the Path” and celebrate with a free catered lunch by LaVolpe Restaurant after the 11:00 a.m. service.



We all have places we want to end up in life. Yet the paths we choose often lead us away from our intended destinations. One poor decision can send us down the wrong road, crushing our dreams, and wasting years of our lives. As time passes, we look back wondering how we got off course, and how we can recover from broken dreams.

“Back to Church Sunday is a terrific time to try church again,” says Martin Hawley, senior pastor, “and Destinations is a great series to get your life on track again.”

In this four-part series, Pastor Hawley examines the disconnect between our dreams and the paths we take to reach them; and we will learn that our direction, not our intention, determines our destination:

- **The Path Principle** (September 17): You win or lose by the path you choose. It is not where you are that is the issue; it is where you are headed. There is often a disconnect between where we want to end up and the path we choose.

Think about the last time you were traveling and got lost. You had your destination in mind. You had every intention of getting there. But you took the wrong path, and you didn't end up where you wanted to be. A disconnect often occurs between the path you choose and where you want to end up. This is the principle of the path, and we'll discover how it impacts every area of life.

- **Looking Ahead** (September 24): When you see trouble coming, don't ignore it. Do Something. A misstep will result in a mishap, regardless of the fact that you were mistaken.

We've all ended up places we never meant to be--where life was complicated, and there were seemingly no good options. Looking back we saw the warning signs, but we just chose to ignore them. It doesn't have to be that way. By looking back at an old wise saying, we will learn to look ahead and avoid the danger that lies in wait for us down the road.

- **Lean Not** (October 1): We don't just need information.

What is the key to making great decisions? Most people would likely agree that having the right information is crucial to making decisions. But while information is very important, it is not the most critical factor in guaranteeing you make the right choice. In fact, if you think about it, you know some really smart people who have made really dumb decisions. So what is it? In this message we'll look at something that is even more important than information when it comes to choosing your path.

- **Attention Deficit Disorder** (October 8): Attention influences direction. Whatever gets our attention influences our direction. What has your attention? Direction determines destination.

But what is it that influences direction? What is it that starts us on our course, either for the places we want to go or the destinations we'd rather avoid? If we could determine what this is, then we could change our course upstream and save ourselves a lot of time, money, and heartache. Discover what this is and how you leverage it to reach the destinations God desires for you.

To find out more about South Bay Bible Church and their upcoming events, please visit <http://www.southbaychurchli.org/>.

About South Bay Bible Church: South Bay Bible Church is a non-denominational Christian church known for Biblical messages applicable to everyday life. The church is located at 578 Montauk Highway in East Moriches, NY. The church's mission is to lead people into a growing relationship with Jesus Christ. Church services are held on Sundays at 8:00, 9:30, and 11:00 a.m. A nursery and children's church are available. For more information, go to www.southbaychurchli.org, call (631) 909-8241, Facebook, or Twitter @sbbcli.

###

Note to editor: A full press page with graphics, logos, and videos is available at www.southbaychurchli.org/press. News media are invited to cover "Destinations." Please call ahead.

