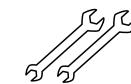


Solderless N Connector

For LMR-400 Coaxial Cable

Tools Needed



x2 Wrenches

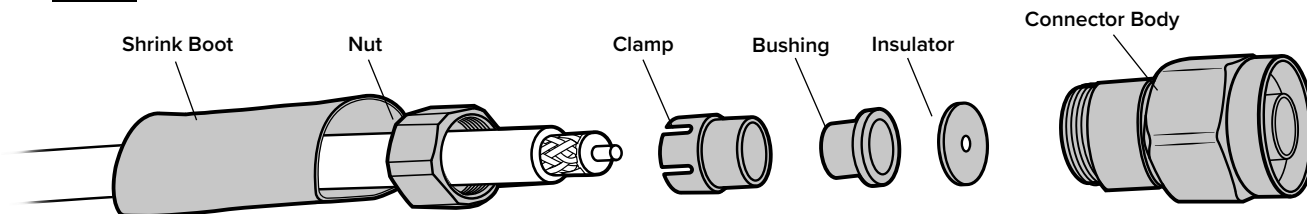


Cable Prep Tool
(#992203)

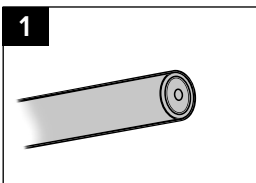


Cable Cutting
Tool

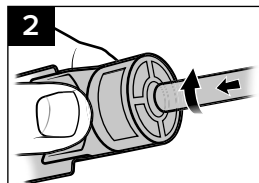
Parts



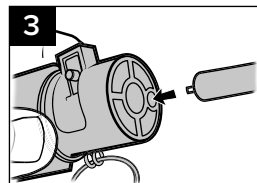
Prepping The Cable



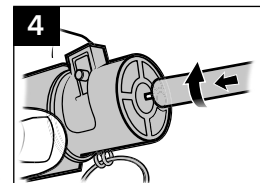
Start with a clean straight cut cable.



Strip jacket, shielding, and dielectric .25" back. Insert cable into the **CUT #1** opening press button and twist.



Deburr the center conductor in **small opening on CUT #2** end of prep tool.



Strip jacket .60" back. Insert cable into the **CUT #2** end of the prep tool and remove jacket only.

Solderless N Connector

For LMR-400 Coaxial Cable

Tools Needed



x2 Wrenches

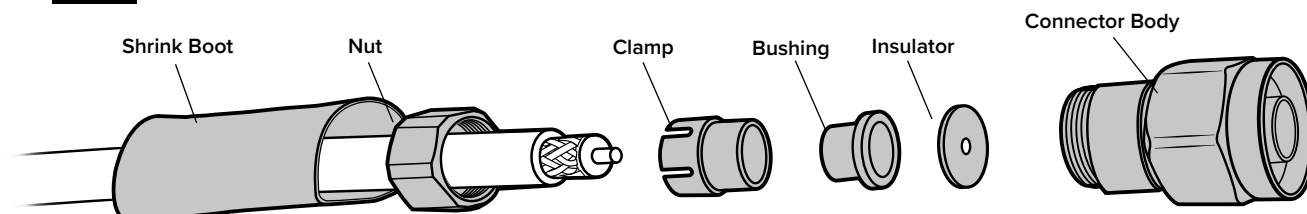


Cable Prep Tool
(#992203)

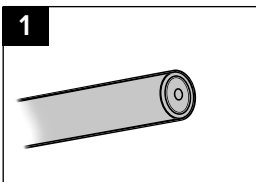


Cable Cutting
Tool

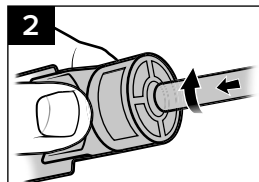
Parts



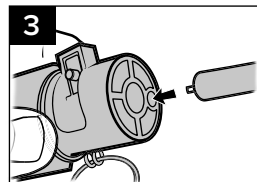
Prepping The Cable



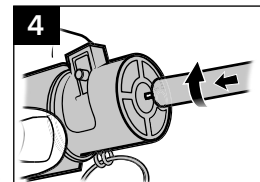
Start with a clean straight cut cable.



Strip jacket, shielding, and dielectric .25" back. Insert cable into the **CUT #1** opening press button and twist.

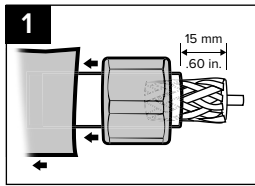


Deburr the center conductor in **small opening on CUT #2** end of prep tool.

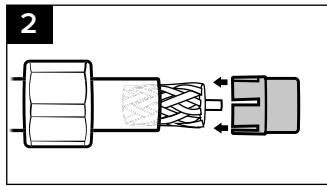


Strip jacket .60" back. Insert cable into the **CUT #2** end of the prep tool and remove jacket only.

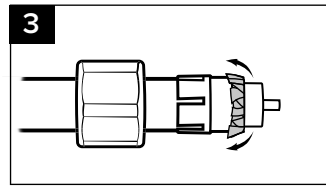
Installing N Connector



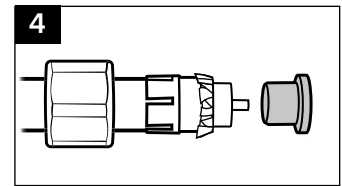
Slide **Shrink Boot** and **Nut** onto the cable.



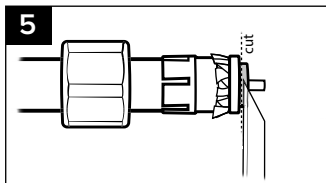
Push cable **Clamp** fitting in place, ensuring shielding is not pushed back.



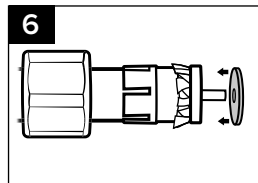
Fold braided shielding back over cable clamp fitting.



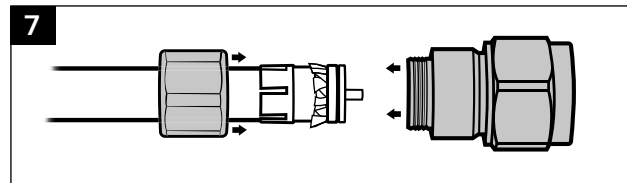
Slide **Bushing** in between the braided shielding and dielectric.



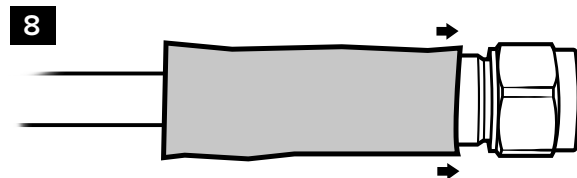
If needed, cut dielectric along bushing end.



Slide on **Insulator**.



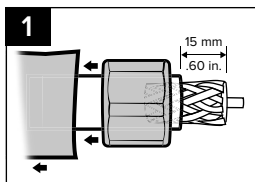
Put the **Connector Body** onto the end of the cable and push firmly into place. Screw the **Nut** into the **Conductor Body** and tighten, using 2 wrenches to torque to a secure fit.



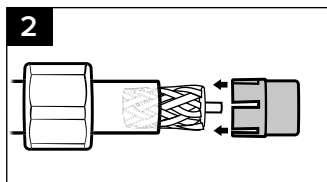
Slide **Shrink Boot** forward and heat shrink. Installation complete!

GDE000102_Rev01_09-20-18

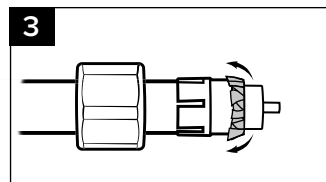
Installing N Connector



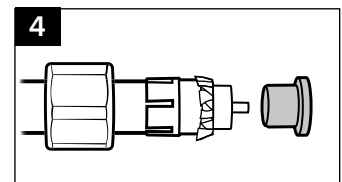
Slide **Shrink Boot** and **Nut** onto the cable.



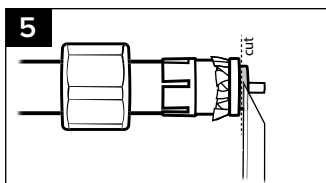
Push cable **Clamp** fitting in place, ensuring shielding is not pushed back.



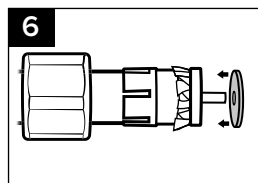
Fold braided shielding back over cable clamp fitting.



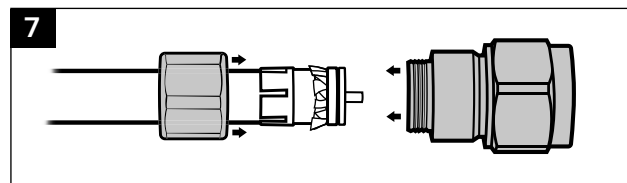
Slide **Bushing** in between the braided shielding and dielectric.



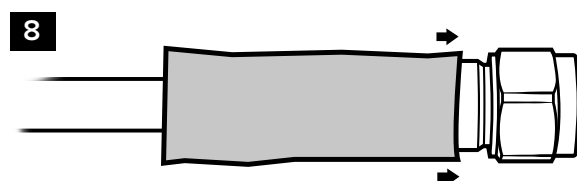
If needed, cut dielectric along bushing end.



Slide on **Insulator**.



Put the **Connector Body** onto the end of the cable and push firmly into place. Screw the **Nut** into the **Conductor Body** and tighten, using 2 wrenches to torque to a secure fit.



Slide **Shrink Boot** forward and heat shrink. Installation complete!

GDE000102_Rev01_09-20-18