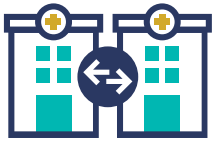




Collaborate for improved care

Clinical advances continue to reveal how complex diseases can be. Specialization is essential to treating these cases. The value of specialization goes unrealized when expert knowledge is incomplete, late, illegible or a duplicate of work already done. Specialists and physicians must be able to collaborate quickly, often and consistently to support patient outcomes. Proper coordination of this work can also have a significant impact on how and where a hospital spends its money.

Tired of chasing referral paper trails? It's time to bring this information into your existing IT infrastructure – once and for all. Discover Referral Management from Forcare.



There's a better way to refer

Referral Management from Forcare takes the frustration and waste out of your referral process. By providing real-time access to relevant clinical information, this solution helps you collaborate and exchange referral information with referring healthcare professionals quickly and easily. And you'll see the difference in your organization right away. Referral Management handles information from a range of clinical specialties without replacing or disrupting your existing IT solutions.

Intelligent

- Customize referral forms around your needs and avoid sending too much or too little information
- Keep all participants up to date on referral progress with automatic email notifications

Intuitive

- Select all relevant information the first time around with a highly intuitive user interface for referral initiation
- Review critical patient information from the referring physician just by opening an attachment

Interoperable

- Rely on proven technology delivered by the IHE platform and multiple standards (XDS, XDW, HL7, FHIR, DICOM)
- Deploy Referral Management either as a stand-alone Web portal or embed it into your EMR

When you choose Referral Management from Forcare, everyone in your network benefits.

Referring professionals

- Stay informed of all specialties and specialists that provide desired services
- Keep workflows fast and efficient with referral auto-population and guidance for mandatory fields
- Prevent referrals from being lost and misdirected
- Get status updates and improve referral responses with results that answer the referral's initial intent

Receiving providers

- Publicize service specialties, locations and availability
- Spend less time on incomplete, inappropriate, illegible and duplicate referrals
- Get a comprehensive view of the patient with access to patient's electronic file
- Prevent costly duplications thanks to information on tests already conducted by another provider

Healthcare managers

- Prevent referral leakage
- Get better performance reports on referral volumes, specialty and nature of referral
- Increase efficiency and capacity
- Improve service with one investment
- Forecast supply and demand and justify requests for more resources
- Improve clinical outcomes through improving processes and using structured data and templates

IT staff

- Easily connect to HIS, PACS, VNA and other information systems
- Reduce the number of systems to connect
- Easily forecast IT demands and requests for additional resources
- Support security initiatives and protocols

Patients

- Stay informed and aware of pre-requisites upfront
- Receive better customer service since status inquiries get a faster response
- Feel confident with less chance of receiving conflicting info from clinicians





Supporting the way you work, from cardiology to surgery

Referral Management from Forcare is perfectly matched to your workflow. It starts with a foundation layer which supports the 80% of all referral workflows that are identical. The overall solution environment is also highly flexible. So the configuration you choose will always deliver exactly what you need. And since Referral Management is based on open standards, you can connect to any IT system at any time and with no vendor lock-in.

Forcare can manage your referral process for virtually any clinical specialty:



Our consultants work with you to first understand your referral challenges and which processes must be supported.

In this phase, we explore:

- which types of referrals need attention
- what are the steps in the process in the case of a specific referral?
- which information is required for specific types of referrals?
- where are the communication gaps and impediments?
- what information needs to be sent back to the referring physician?
- where in the process would referring physicians like to be updated on the status?

FORCARE

EMPOWERING YOUR FLOW



“Now we can access all relevant cardiac information available in the region through one single interface. This has greatly improved the efficiency of patient referrals thus improving the quality of patient care.”

Matty Lautenbach

Head of Cardiology Cardiac Catheterization,
Medical Center Leeuwarden, Leeuwarden, the Netherlands

Seeing the bigger picture

Forcare offers a complete suite of software products to help healthcare networks and professionals improve patient care. Founded in 2006, we're dedicated to interoperability as the way to empower your data flow and workflow. We support all IHE profiles which can be used by healthcare professionals to easily share patient information, enjoy collaborative workflows and connect healthcare networks.

Ready to put the pain of paper referral management behind you?

Visit forcare.com to learn how our Referral Management solution gives you real-time access to relevant clinical information to help you take full advantage of collaboration and specialization.

Forcare B.V.

Laan van Vollenhove 2931
3706 AK ZEIST, the Netherlands

Copyright 2017

This publication may be distributed in its unmodified whole with reference to the author and company name.

forcare.com