

# Comprehensive Collaboration: R2R and Treasury

## Craig Jeffery

Founder & Managing Partner, Strategic Treasurer

- Formed Strategic Treasurer LLC in 2004
- 30+ years of financial and treasury experience
- Helped organizations craft realistic goals and achieve significant benefits quickly



# Agenda

- **Building A Profitable Business**
- **The Impact Of Bottlenecks**
- **Comprehensive Collaboration**
- **Q&A**

# Building A Profitable Business

1



Product / Services

2



Ability to Scale

3



Capital and Liquidity

4



Risk Management

# The Impact of Bottlenecks

1



Time

2



Reporting

3



Strategy

4

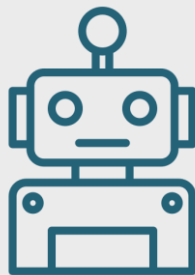


Collaboration

# Comprehensive Collaboration

## R2R + Treasury

### BUSINESS EFFICIENCY



Automation



Time = Money

# Together is Better

## For Profit Optimization



Agility



Processes



Forecasting



Planning



Cash



Growth



# Lets Connect

DON'T LET THE LEARNING END HERE...  
CONTACT US WITH ANY FUTURE  
QUESTIONS

## STRATEGIC TREASURER

Craig A. Jeffery,  
*Managing Partner*

[craig@strategictreasurer.com](mailto:craig@strategictreasurer.com)

+1 678.466.2222



**Treasury insights and news**



[Listen](#)