

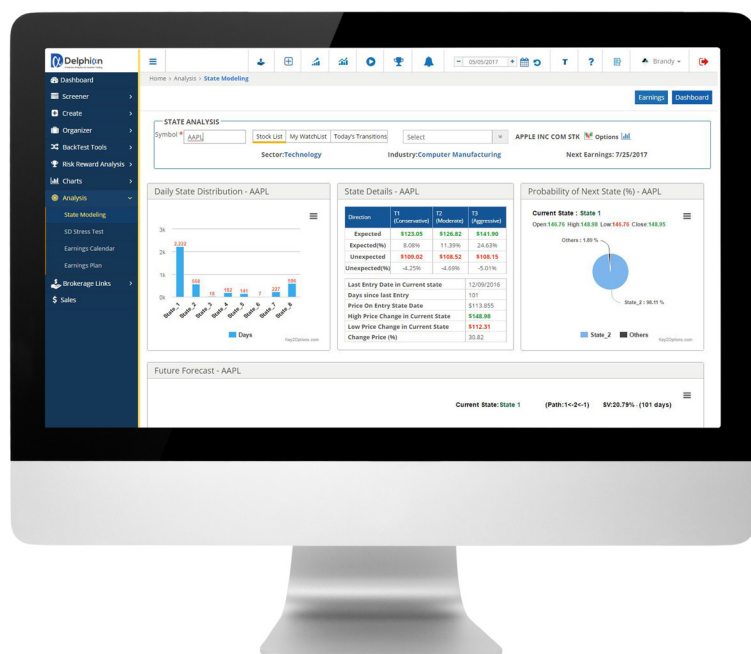


Predictive Analytics for Smarter Trading

Delphian provides quant managers, investment banks, academia, money managers, proprietary traders and retail traders with an institutional strength market analysis, strategy development, optimization, and execution platform.

Our proprietary algorithm predicts stock movement with over 80% directional accuracy

Take the guessing out of trading and make rational trades based on mathematics and forecasted performance



Our proprietary **State Modeling™** uses machine learning to examine patterns in stock and options performance to help traders create and optimize high probability trade strategies. Delphian helps businesses and individuals leverage the power of artificial intelligence in trading.

State Modeling gives traders the data they need to develop a high probability winning trade strategy:

- Direction of the underlying security
- Magnitude of the move
- The timeframe in which it is going to make the move

GIVING YOU THE DATA THAT YOU NEED TO DEVELOP A HIGH PROBABILITY WINNING TRADE STRATEGY

DISCLOSURE: Delphian, owned and operated by Capmark Solutions, LLC, do not give business, financial, or other professional advice. Materials from Delphian is for informational purposes only, meant to help investors educate themselves. No reliance should be placed upon the contents. Delphian does not warrant the accuracy or suitability of any information contained on the websites nor any other links or references to other websites, persons, or information. Delphian accepts no responsibility for any loss, damage, costs, or expense (whether direct or indirect) incurred by you as a result of any error, omission, or misrepresentation in information on the website. Delphian does not accept liability for errors, omissions in, delays, interruptions to, or cessation of access to the website, through negligence or for any other reason whatsoever. Past performance is not an indicator of future results. You may lose more money than you invest in options trading.

Sound Complex? We Make it easy. Delphian provides dashboards and wizards to help you easily build trading scenarios and provides more advanced traders with the flexibility to create their own quantitative models.

Institutional Strength Market Analysis, Strategy Development and Optimization

When done effectively, a comprehensive strategy framework can:

- Eliminate costly emotions during highs or lows, and invest based on facts
- Develop new, uncorrelated strategies that diversify your portfolio's risk
- Discover lucrative but infrequent trading opportunities
- Give unique, tangible, and justifiable investment advice to your clients
- Identify superior alpha generating investment opportunities
- Demonstrate objective credibility to current and prospective investors
- Identify and mitigate behavioral biases in investment decision-making
- Provide an effective risk mitigation strategy
- Add or reduce existing positions in a methodical manner with historically proven models

The Delphian platform empowers traders with institutional grade trade analytics, allowing you to analyze and optimize stock and options trading scenarios in seconds to identify which trades will provide maximum returns.

We test trade strategies against more than 10 years of historical performance, letting traders know how often a strategy wins and how often it loses.

No more wondering "What if I had applied investment strategy X, during period Y."

Why use quantitative models?

Simple, it takes the emotions of fear and greed out of trading. Analyze, Create, Backtest, Refine and Trade all within the Delphian platform, a web-based platform that can be accessed from mobile devices, tablets or PCs.

How is Delphian Different?

- *Test stock and options strategies*
- *Run multiple symbols at one time*
- *Test against custom time frames, more than 10 years*
- *Convert to alternative options strategies with just one click!*



📍 3000 Bayport Drive, Suite 840
Tampa, FL 33607

📞 813-330-0900

✉️ sales@delphiantrading.com

🌐 www.delphiantrading.com

