

# COVID-19 Testing, Infection & Hospitalization Tracker

Data current as of: 5/19/2020 (6:13 a.m.)

Data Source: Covidtracking.com

Percent of Population Tested	Percent of People Tested Who Were Positive	Percent of People Who Tested Positive & Were Hospitalized	Percent of People Hospitalized Who Were Admitted to ICU	Percent of Total Population Hospitalized	Percent of People Who Tested Positive & Died	Percent of Total Population Who Have Died
------------------------------	--	---	---	--	--	---

A blank field means no data was available

Median calculations only include states with available data

<b>U.S. Total</b>	<b>3.60%</b>	<b>12.7%</b>				<b>5.6%</b>	<b>0.0258%</b>
<b>Median of States</b>	<b>3.21%</b>	<b>8.1%</b>	<b>13.6%</b>	<b>33.1%</b>	<b>0.035%</b>	<b>4.4%</b>	<b>0.0096%</b>
Maximum State	10.92%	29.3%	28.7%	42.0%	0.390%	9.5%	0.1169%
Minimum State	0.00%	1.1%	6.9%	22.6%	0.006%	1.1%	0.0000%
<b>States with Highest % of Populaton Tested</b>	<b>7.40%</b>	<b>11.1%</b>	<b>11.2%</b>		<b>0.122%</b>	<b>4.5%</b>	<b>0.0479%</b>

## REGIONS

Maximum							
MIDWEST	2.75%	12.7%	15.5%	24.0%	0.037%	4.5%	0.0262%
PLAINS STATES	2.85%	13.5%	8.9%	33.8%	0.025%	2.2%	0.0081%
SOUTHEAST	3.14%	7.2%	15.9%	36.2%	0.039%	4.3%	0.0085%
UPPER WEST	3.01%	4.4%	8.8%	41.8%	0.013%	2.3%	0.0040%
WEST COAST	3.24%	6.2%	19.2%		0.016%	4.1%	0.0083%
MOUNTAIN/SOUTHWEST	2.61%	8.4%	13.5%	33.1%	0.033%	4.8%	0.0111%
SOUTH	2.96%	6.2%	13.7%		0.020%	4.1%	0.0059%
EAST	3.31%	18.5%	17.8%	26.6%	0.065%	5.1%	0.0302%
NORTHEAST	5.66%	18.7%	12.1%	30.4%	0.129%	6.5%	0.0831%
OUTLYNG	2.98%	1.3%	12.8%		0.006%	2.6%	0.0012%

Data Source: Covidtracking.com

Percent of Population Tested	Percent of People Tested Who Were Positive	Percent of People Who Tested Positive & Were Hospitalized	Percent of People Hospitalized Who Were Admitted to ICU	Percent of Total Population Hospitalized	Percent of People Who Tested Positive & Died	Percent of Total Population Who Have Died
------------------------------	--	---	---	--	--	---

A blank field means no data was available  
 Median calculations only include states with available data

States with Highest % of Populaton Tested							
	7.40%	11.1%	11.2%		0.122%	4.5%	0.0479%
1 Rhode Island	10.92%	11.1%	11.2%		0.136%	4.0%	0.0479%
2 North Dakota	7.43%	3.4%	6.9%		0.017%	2.3%	0.0058%
3 New York	7.40%	24.4%	21.6%		0.390%	6.5%	0.1169%
4 Massachusetts	6.61%	18.7%	9.9%		0.122%	6.7%	0.0831%
5 New Mexico	6.36%	4.5%	14.9%		0.042%	4.5%	0.0126%
MIDWEST							
	2.75%	12.7%	15.5%	24.0%	0.037%	4.5%	0.0262%
Wisconsin	2.69%	8.1%	16.3%	24.0%	0.035%	3.6%	0.0078%
Illinois	4.77%	16.0%				4.4%	0.0334%
Minnesota	2.75%	10.5%	13.0%	34.4%	0.037%	4.5%	0.0130%
Michigan	4.08%	12.7%				9.5%	0.0489%
Indiana	2.73%	15.4%	15.5%	22.6%	0.065%	6.2%	0.0262%
PLAINS STATES							
	2.85%	13.5%	8.9%	33.8%	0.025%	2.2%	0.0081%
Iowa	3.24%	14.5%				2.4%	0.0112%
Nebraska	3.46%	15.3%				1.2%	0.0063%
Kansas	2.30%	12.4%	8.9%	33.8%	0.025%	2.1%	0.0059%
Missouri	2.45%	7.2%				5.5%	0.0098%
UPPER WEST							
	3.01%	4.4%	8.8%	41.8%	0.013%	2.3%	0.0040%
North Dakota	7.43%	3.4%	6.9%		0.017%	2.3%	0.0058%
South Dakota	3.22%	13.9%	7.8%		0.035%	1.1%	0.0049%
Wyoming	3.01%	4.4%	9.7%		0.013%	1.1%	0.0014%
Montana	2.59%	1.7%	13.6%		0.006%	3.4%	0.0015%
Idaho	2.01%	6.6%	8.8%	41.8%	0.012%	3.0%	0.0040%

Data Source: Covidtracking.com

	Percent of Population Tested	Percent of People Tested Who Were Positive	Percent of People Who Tested Positive & Were Hospitalized	Percent of People Hospitalized Who Were Admitted to ICU	Percent of Total Population Hospitalized	Percent of People Who Tested Positive & Died	Percent of Total Population Who Have Died
<b>A blank field means no data was available</b>							
<b>Median calculations only include states with available data</b>							
<b>WEST COAST</b>	<b>3.24%</b>	<b>6.2%</b>	<b>19.2%</b>		<b>0.016%</b>	<b>4.1%</b>	<b>0.0083%</b>
Washington	3.66%	6.5%				5.4%	0.0128%
Oregon	2.26%	3.8%	19.2%		0.016%	3.7%	0.0032%
California	3.24%	6.2%				4.1%	0.0083%
<b>MOUNTAIN/SOUTHWEST</b>	<b>2.61%</b>	<b>8.4%</b>	<b>13.5%</b>	<b>33.1%</b>	<b>0.033%</b>	<b>4.8%</b>	<b>0.0111%</b>
Colorado	2.20%	17.1%	17.6%		0.066%	5.1%	0.0192%
Utah	5.30%	4.2%	8.1%	33.1%	0.018%	1.1%	0.0024%
Nevada	2.61%	8.4%				5.1%	0.0111%
Arizona	2.12%	9.1%	12.1%		0.023%	4.8%	0.0093%
New Mexico	6.36%	4.5%	14.9%		0.042%	4.5%	0.0126%
<b>SOUTH</b>	<b>2.96%</b>	<b>6.2%</b>	<b>13.7%</b>		<b>0.020%</b>	<b>4.1%</b>	<b>0.0059%</b>
Texas	2.45%	6.7%				2.8%	0.0046%
Louisiana	5.81%	12.9%				7.4%	0.0552%
Arkansas	2.80%	5.6%	11.0%		0.017%	2.1%	0.0033%
Oklahoma	3.12%	4.4%	16.4%		0.022%	5.3%	0.0073%
<b>EAST</b>	<b>3.31%</b>	<b>18.5%</b>	<b>17.8%</b>	<b>26.6%</b>	<b>0.065%</b>	<b>5.1%</b>	<b>0.0302%</b>
Pennsylvania	2.66%	18.5%				7.1%	0.0351%
Virginia	2.27%	15.9%	18.0%		0.065%	3.3%	0.0118%
West Virginia	4.28%	2.0%				4.5%	0.0038%
Delaware	4.32%	18.5%				3.8%	0.0302%
Maryland	3.31%	19.7%	17.8%		0.116%	5.1%	0.0333%
District of Columbia	5.25%	19.2%				5.4%	0.0544%
Ohio	2.31%	10.5%	17.6%	26.6%	0.043%	5.8%	0.0141%

Data Source: Covidtracking.com

Percent of Population Tested	Percent of People Tested Who Were Positive	Percent of People Who Tested Positive & Were Hospitalized	Percent of People Hospitalized Who Were Admitted to ICU	Percent of Total Population Hospitalized	Percent of People Who Tested Positive & Died	Percent of Total Population Who Have Died
------------------------------	--	---	---	--	--	---

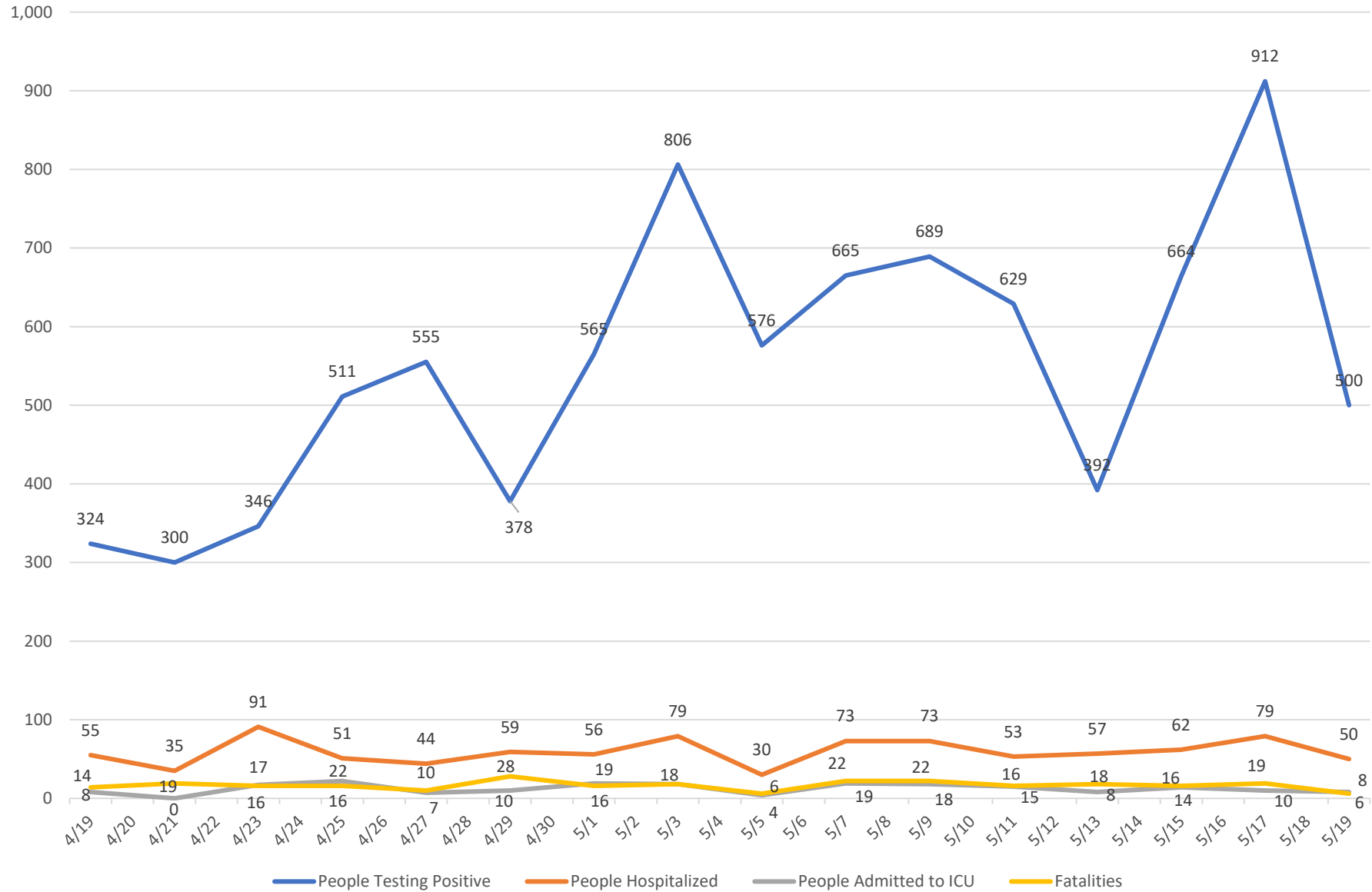
A blank field means no data was available

Median calculations only include states with available data

<b>NORTHEAST</b>	<b>5.66%</b>	<b>18.7%</b>	<b>12.1%</b>	<b>30.4%</b>	<b>0.129%</b>	<b>6.5%</b>	<b>0.0831%</b>
New York	7.40%	24.4%	21.6%		0.390%	6.5%	0.1169%
New Jersey	5.66%	29.3%				7.0%	0.1168%
Connecticut	4.99%	21.5%	28.7%		0.307%	9.0%	0.0968%
Rhode Island	10.92%	11.1%	11.2%		0.136%	4.0%	0.0479%
Massachusetts	6.61%	18.7%	9.9%		0.122%	6.7%	0.0831%
Maine	1.77%	7.2%	13.0%		0.017%	4.1%	0.0053%
New Hampshire	3.27%	8.0%	10.0%	30.4%	0.026%	4.8%	0.0125%
<b>OUTLYNG</b>	<b>2.98%</b>	<b>1.3%</b>	<b>12.8%</b>		<b>0.006%</b>	<b>2.6%</b>	<b>0.0012%</b>
Alaska	4.85%	1.1%				2.5%	0.0014%
Hawaii	2.98%	1.5%	12.8%		0.006%	2.7%	0.0012%
Puerto Rico	0.00%						0.0000%
<b>SOUTHEAST</b>	<b>3.14%</b>	<b>7.15%</b>	<b>15.89%</b>	<b>36.16%</b>	<b>0.039%</b>	<b>4.33%</b>	<b>0.0085%</b>
Kentucky	2.88%	5.9%	24.7%	42.0%	0.042%	4.3%	0.0074%
Tennessee	4.89%	5.3%	8.3%		0.022%	1.7%	0.0044%
North Carolina	2.41%	7.4%				3.5%	0.0062%
South Carolina	2.53%	6.8%	15.9%		0.027%	4.4%	0.0075%
Mississippi	3.87%	9.9%	15.8%		0.060%	4.6%	0.0177%
Florida	3.08%	6.9%	18.4%		0.039%	4.5%	0.0094%
Alabama	3.20%	7.7%	11.7%	36.2%	0.029%	4.0%	0.0100%
Georgia	3.39%	10.5%	18.2%	22.6%	0.064%	4.3%	0.0153%

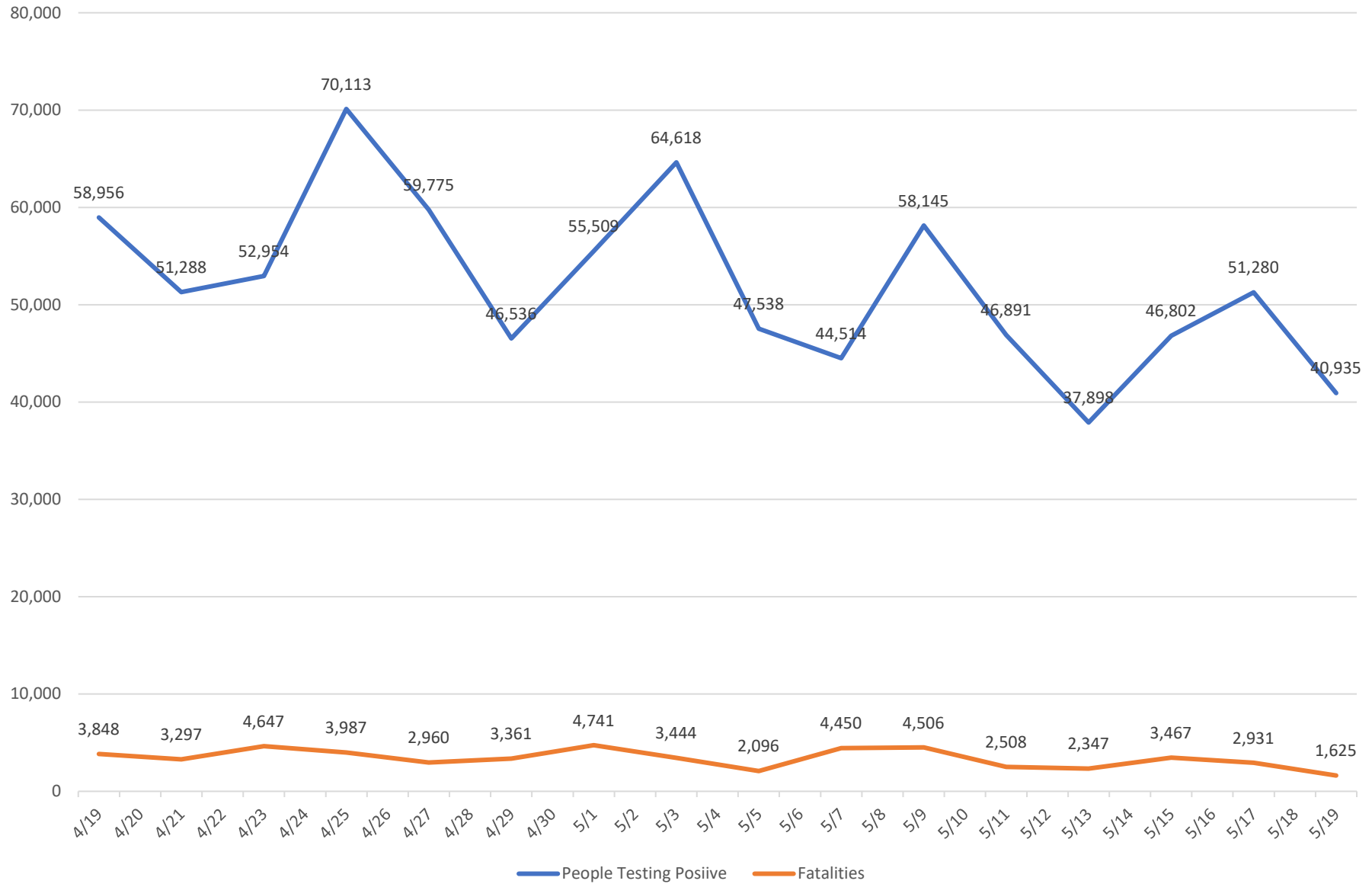
# Net Two-Day Change in Cumulative Numbers - Wisconsin

Source: covidtracking.com



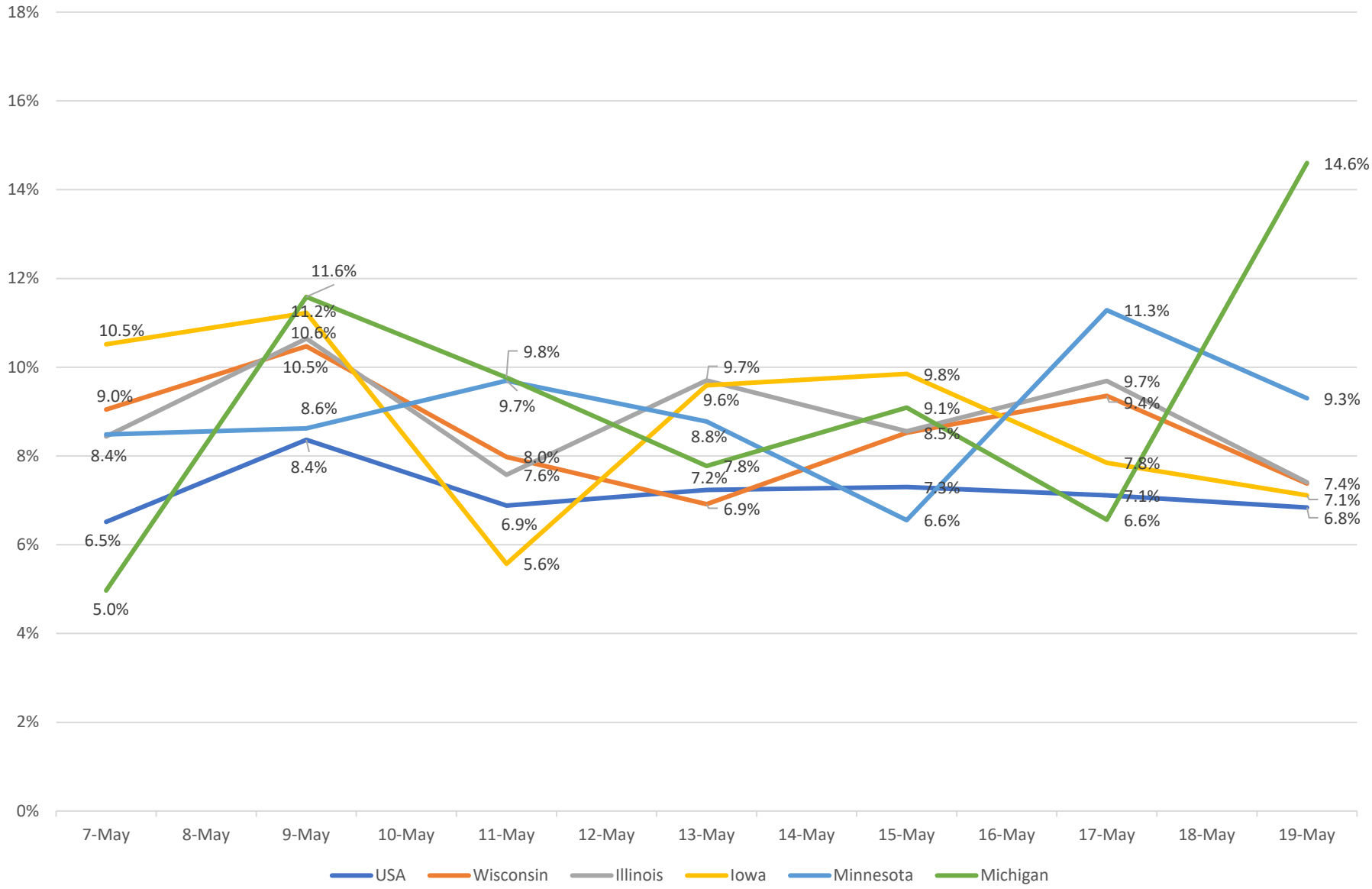
# Two-Day Change in Cumulative Numbers - USA

Source: [www.covidtracking.com](http://www.covidtracking.com)



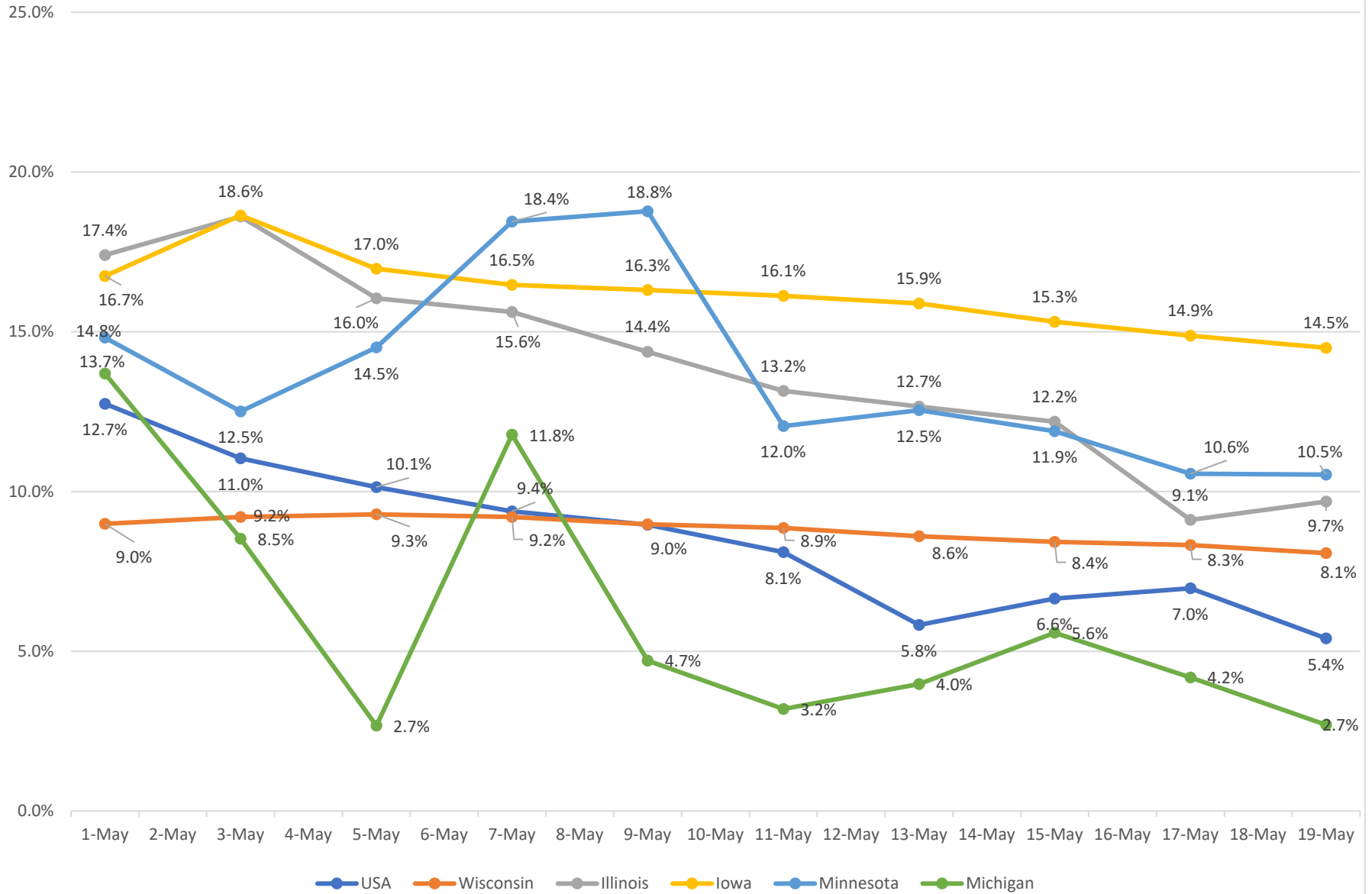
# Two-Day Change in People Tested

www.covidtracking.com



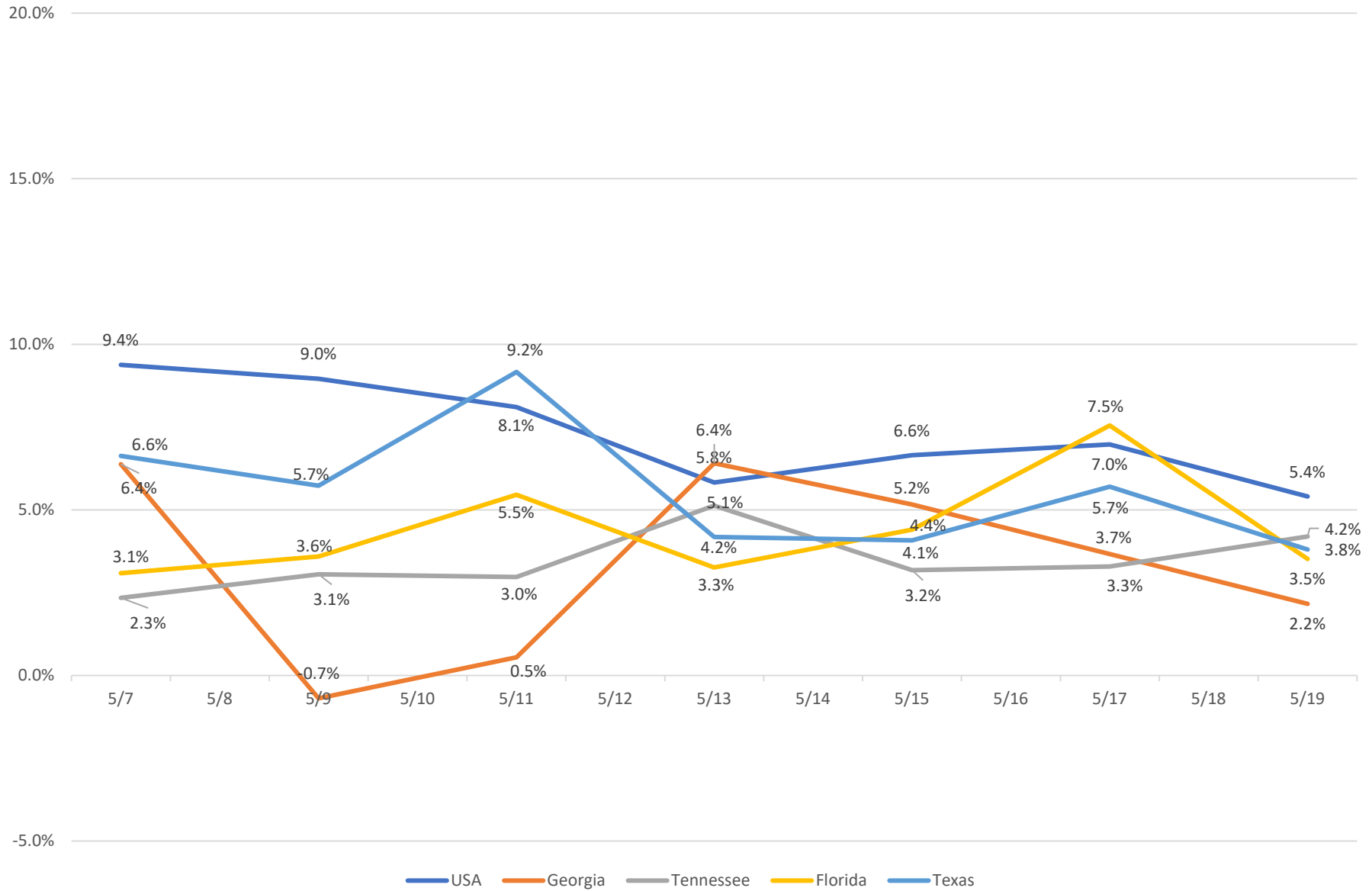
## Two-Day Change in Percent of New Tests Positive for COVID-19

www.covidtracking.com

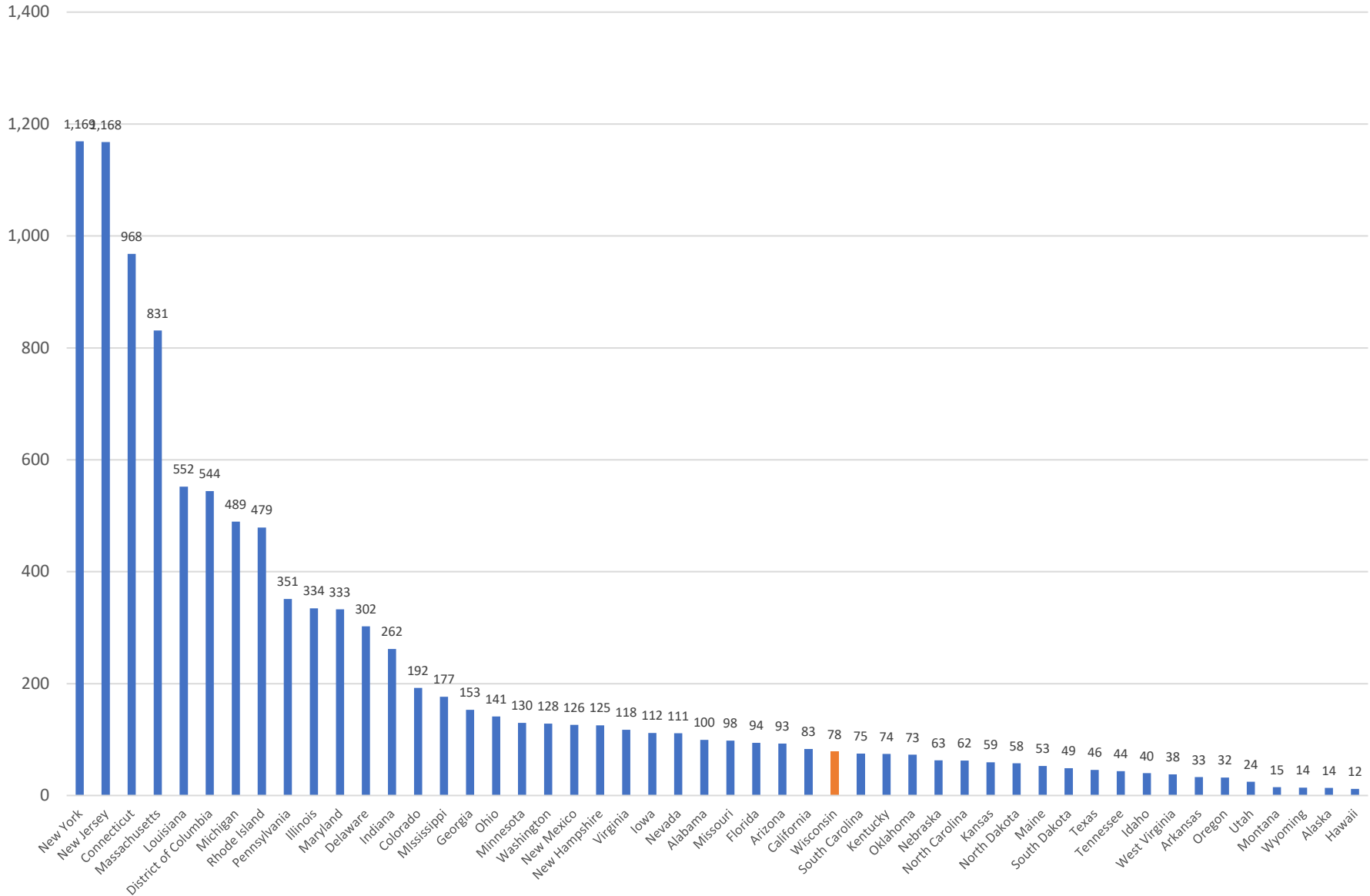




## Two-Day Change in Percent of New Tests Positive Select States That Are Re-Opening



COVID-19 Fatalities Per Million  
 Source: www.covidtracking.com



# Fatalities Per Million by Wisconsin County

Source: Wisconsin Department of Health Services

