

STATE BANK of CHILTON

A trusted partner since 1891





Pacific Coast Condensed Milk Company • 1911

The Pacific Coast Condensed Milk Company was formed in 1899 by E.A. Stuart. He later changed the name to Carnation Company. P.C.C.M. Co purchased the former Calumet Dairy Cold Storage facility in Chilton in 1911. After plant modifications were completed, the Chilton plant location began producing Carnation Evaporated Milk and continued doing so until 1954, when it began producing Carnation Instant Milk. In 1978 it stopped producing food products for people and began production of milk replacer products for animals instead. Today the business is called Milk Products.

Photo Submitted by Colleen Enneper

JANUARY 2019

SUNDAY	MONDAY	TUESDAY	WEDNESDAY	THURSDAY	FRIDAY	SATURDAY																																																	
		1	2	3	4	5																																																	
		NEW YEAR'S DAY Bank Closed																																																					
6	7	8	9	10	11	12																																																	
13	14	15	16	17	18	19																																																	
20	21	22	23	24	25	26																																																	
	MARTIN LUTHER KING JR. DAY Bank Open Regular Hours																																																						
27	28	29	30	31	<div>December 2018</div> <table> <tr><td>S</td><td>M</td><td>T</td><td>W</td><td>T</td><td>F</td><td>S</td></tr> <tr><td></td><td></td><td></td><td></td><td></td><td></td><td>1</td></tr> <tr><td>2</td><td>3</td><td>4</td><td>5</td><td>6</td><td>7</td><td>8</td></tr> <tr><td>9</td><td>10</td><td>11</td><td>12</td><td>13</td><td>14</td><td>15</td></tr> <tr><td>16</td><td>17</td><td>18</td><td>19</td><td>20</td><td>21</td><td>22</td></tr> <tr><td>23</td><td>24</td><td>25</td><td>26</td><td>27</td><td>28</td><td>29</td></tr> <tr><td>30</td><td>31</td><td></td><td></td><td></td><td></td><td></td></tr> </table>		S	M	T	W	T	F	S							1	2	3	4	5	6	7	8	9	10	11	12	13	14	15	16	17	18	19	20	21	22	23	24	25	26	27	28	29	30	31					
S	M	T	W	T	F	S																																																	
						1																																																	
2	3	4	5	6	7	8																																																	
9	10	11	12	13	14	15																																																	
16	17	18	19	20	21	22																																																	
23	24	25	26	27	28	29																																																	
30	31																																																						
					<div>February 2019</div> <table> <tr><td>S</td><td>M</td><td>T</td><td>W</td><td>T</td><td>F</td><td>S</td></tr> <tr><td></td><td></td><td></td><td></td><td></td><td></td><td>1 2</td></tr> <tr><td>3</td><td>4</td><td>5</td><td>6</td><td>7</td><td>8</td><td>9</td></tr> <tr><td>10</td><td>11</td><td>12</td><td>13</td><td>14</td><td>15</td><td>16</td></tr> <tr><td>17</td><td>18</td><td>19</td><td>20</td><td>21</td><td>22</td><td>23</td></tr> <tr><td>24</td><td>25</td><td>26</td><td>27</td><td>28</td><td></td><td></td></tr> </table>		S	M	T	W	T	F	S							1 2	3	4	5	6	7	8	9	10	11	12	13	14	15	16	17	18	19	20	21	22	23	24	25	26	27	28									
S	M	T	W	T	F	S																																																	
						1 2																																																	
3	4	5	6	7	8	9																																																	
10	11	12	13	14	15	16																																																	
17	18	19	20	21	22	23																																																	
24	25	26	27	28																																																			

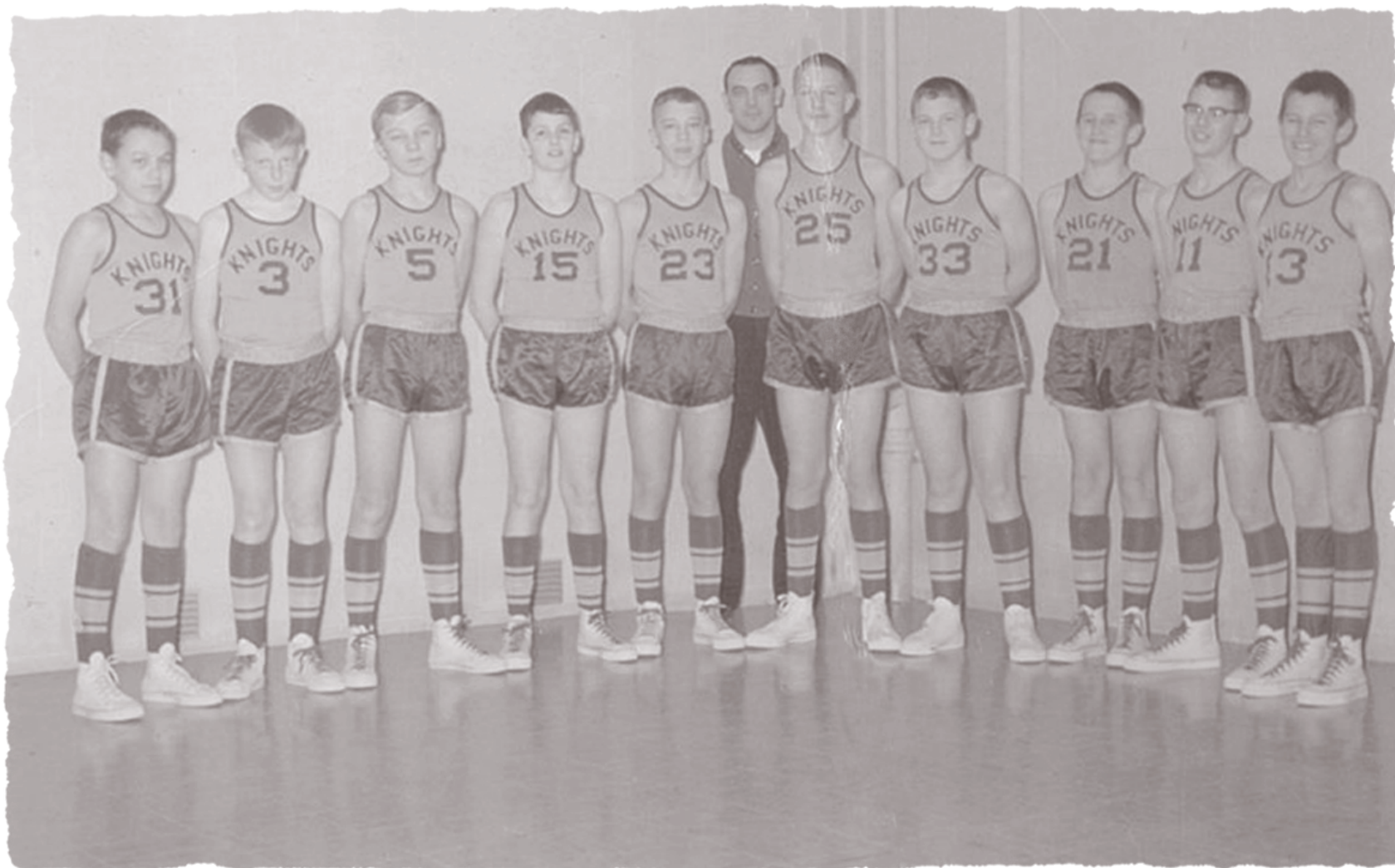


Greg Goeser (left) and Douglas Stevens with 84" Sturgeon speared in 1940

Photo Submitted by Donald Ecker

FEBRUARY 2019

SUNDAY	MONDAY	TUESDAY	WEDNESDAY	THURSDAY	FRIDAY	SATURDAY																																																	
				<div>January 2019</div> <table> <tr><td>S</td><td>M</td><td>T</td><td>W</td><td>T</td><td>F</td><td>S</td></tr> <tr><td></td><td></td><td>1</td><td>2</td><td>3</td><td>4</td><td>5</td></tr> <tr><td>6</td><td>7</td><td>8</td><td>9</td><td>10</td><td>11</td><td>12</td></tr> <tr><td>13</td><td>14</td><td>15</td><td>16</td><td>17</td><td>18</td><td>19</td></tr> <tr><td>20</td><td>21</td><td>22</td><td>23</td><td>24</td><td>25</td><td>26</td></tr> <tr><td>27</td><td>28</td><td>29</td><td>30</td><td>31</td><td></td><td></td></tr> </table>	S	M	T	W	T	F	S			1	2	3	4	5	6	7	8	9	10	11	12	13	14	15	16	17	18	19	20	21	22	23	24	25	26	27	28	29	30	31			1	2							
S	M	T	W	T	F	S																																																	
		1	2	3	4	5																																																	
6	7	8	9	10	11	12																																																	
13	14	15	16	17	18	19																																																	
20	21	22	23	24	25	26																																																	
27	28	29	30	31																																																			
3	4	5	6	7	8	9																																																	
10	11	12	13	14	15	16																																																	
17	18	19	20	VALENTINE'S DAY	22	23																																																	
24	25	26	27	28	<div>March 2019</div> <table> <tr><td>S</td><td>M</td><td>T</td><td>W</td><td>T</td><td>F</td><td>S</td></tr> <tr><td></td><td></td><td></td><td></td><td></td><td>1</td><td>2</td></tr> <tr><td>3</td><td>4</td><td>5</td><td>6</td><td>7</td><td>8</td><td>9</td></tr> <tr><td>10</td><td>11</td><td>12</td><td>13</td><td>14</td><td>15</td><td>16</td></tr> <tr><td>17</td><td>18</td><td>19</td><td>20</td><td>21</td><td>22</td><td>23</td></tr> <tr><td>24</td><td>25</td><td>26</td><td>27</td><td>28</td><td>29</td><td>30</td></tr> <tr><td>31</td><td></td><td></td><td></td><td></td><td></td><td></td></tr> </table>	S	M	T	W	T	F	S						1	2	3	4	5	6	7	8	9	10	11	12	13	14	15	16	17	18	19	20	21	22	23	24	25	26	27	28	29	30	31							
S	M	T	W	T	F	S																																																	
					1	2																																																	
3	4	5	6	7	8	9																																																	
10	11	12	13	14	15	16																																																	
17	18	19	20	21	22	23																																																	
24	25	26	27	28	29	30																																																	
31																																																							
	PRESIDENTS' DAY Bank Open Regular Hours																																																						



St. Mary's Grade School Basketball Team (Chilton) 1964 – 1965 Season
L – R: Pat Nolan, Nick Pfeffer, Mike Bruckner, Ken Veit, Terry Friederichs, Bob Kobriger (Coach),
Jim Schwarz, Dan Neuhoff, Steve Bruckner, Mike Hauser, Dick Bruckner

Photo Submitted by Mike Hauser

MARCH 2019

SUNDAY	MONDAY	TUESDAY	WEDNESDAY	THURSDAY	FRIDAY	SATURDAY
			February 2019 S M T W T F S 1 2 3 4 5 6 7 8 9 10 11 12 13 14 15 16 17 18 19 20 21 22 23 24 25 26 27 28	April 2019 S M T W T F S 1 2 3 4 5 6 7 8 9 10 11 12 13 14 15 16 17 18 19 20 21 22 23 24 25 26 27 28 29 30	1	2
3	4	5	6	7	8	9
10 DAYLIGHT SAVING TIME BEGINS	11	12	13	14	15	16
17 ST. PATRICK'S DAY	18	19	20	21	22	23
24	25	26	27	28	29	30
31						



Street Scene in Sherwood 1916

Photo from Joe Diedrich collection

APRIL 2019

SUNDAY	MONDAY	TUESDAY	WEDNESDAY	THURSDAY	FRIDAY	SATURDAY																																																	
<div>March 2019</div> <table><tr><td>S</td><td>M</td><td>T</td><td>W</td><td>T</td><td>F</td><td>S</td></tr><tr><td></td><td></td><td></td><td></td><td></td><td>1</td><td>2</td></tr><tr><td>3</td><td>4</td><td>5</td><td>6</td><td>7</td><td>8</td><td>9</td></tr><tr><td>10</td><td>11</td><td>12</td><td>13</td><td>14</td><td>15</td><td>16</td></tr><tr><td>17</td><td>18</td><td>19</td><td>20</td><td>21</td><td>22</td><td>23</td></tr><tr><td>24</td><td>25</td><td>26</td><td>27</td><td>28</td><td>29</td><td>30</td></tr><tr><td>31</td><td></td><td></td><td></td><td></td><td></td><td></td></tr></table>	S	M	T	W	T	F	S						1	2	3	4	5	6	7	8	9	10	11	12	13	14	15	16	17	18	19	20	21	22	23	24	25	26	27	28	29	30	31							1	2	3	4	5	6
S	M	T	W	T	F	S																																																	
					1	2																																																	
3	4	5	6	7	8	9																																																	
10	11	12	13	14	15	16																																																	
17	18	19	20	21	22	23																																																	
24	25	26	27	28	29	30																																																	
31																																																							
7	8	9	10	11	12	13																																																	
14	15	16	17	18	19	20																																																	
21	22	23	24	25	26	27																																																	
EASTER SUNDAY	29	30	<div>May 2019</div> <table><tr><td>S</td><td>M</td><td>T</td><td>W</td><td>T</td><td>F</td><td>S</td></tr><tr><td></td><td></td><td></td><td>1</td><td>2</td><td>3</td><td>4</td></tr><tr><td>5</td><td>6</td><td>7</td><td>8</td><td>9</td><td>10</td><td>11</td></tr><tr><td>12</td><td>13</td><td>14</td><td>15</td><td>16</td><td>17</td><td>18</td></tr><tr><td>19</td><td>20</td><td>21</td><td>22</td><td>23</td><td>24</td><td>25</td></tr><tr><td>26</td><td>27</td><td>28</td><td>29</td><td>30</td><td>31</td><td></td></tr></table>	S	M	T	W	T	F	S				1	2	3	4	5	6	7	8	9	10	11	12	13	14	15	16	17	18	19	20	21	22	23	24	25	26	27	28	29	30	31											
S	M	T	W	T	F	S																																																	
			1	2	3	4																																																	
5	6	7	8	9	10	11																																																	
12	13	14	15	16	17	18																																																	
19	20	21	22	23	24	25																																																	
26	27	28	29	30	31																																																		
28																																																							

STATE BANK OF CHILTON'S
128th Anniversary
GOOD FRIDAY
Bank Closed 12 p.m. - 3 p.m.



St. Mary's – Stockbridge Class of 1965

Many of these students will be receiving their Golden Diploma (50 years) at the Graduation ceremony this year.

Front L-R: Don Schumacher, Katherine Heimbach, Gary Gebhart, Gary Ricker, Theresa Hemauer, Dan Hemauer, Jacolyn Hemauer, Steve Schwobe, Sharon Penning Bruckner, Janice Hoerth Olson, Sister Civana | **Middle L-R:** Fr. Willinger, Arlene Mueller Arenz, Charlie Propson, Gail Goeser Piotrowski, Linda Schroven Hemauer, Judith Pilling, Robert Goeser, Steven Custer, Elaine Gerhartz Hemauer, Linda Ertl Gajewski, Robert Hemauer | **Back L-R:** Mike Thiel, James Zahringer, Susan Head Schoen, Maurice Olson, Vernon Gebhart, Edward Reif, Dennis Schaefer, Marjorie Winkler Ott, George Gerner, Mary Zitzelsberger Halbach

Photo Submitted by Gail Ricker

MAY 2019

SUNDAY	MONDAY	TUESDAY	WEDNESDAY	THURSDAY	FRIDAY	SATURDAY																																																	
		<div>April 2019</div> <table> <tr><td>S</td><td>M</td><td>T</td><td>W</td><td>T</td><td>F</td><td>S</td></tr> <tr><td></td><td>1</td><td>2</td><td>3</td><td>4</td><td>5</td><td>6</td></tr> <tr><td>7</td><td>8</td><td>9</td><td>10</td><td>11</td><td>12</td><td>13</td></tr> <tr><td>14</td><td>15</td><td>16</td><td>17</td><td>18</td><td>19</td><td>20</td></tr> <tr><td>21</td><td>22</td><td>23</td><td>24</td><td>25</td><td>26</td><td>27</td></tr> <tr><td>28</td><td>29</td><td>30</td><td></td><td></td><td></td><td></td></tr> </table>	S	M	T	W	T	F	S		1	2	3	4	5	6	7	8	9	10	11	12	13	14	15	16	17	18	19	20	21	22	23	24	25	26	27	28	29	30					1	2	3	4							
S	M	T	W	T	F	S																																																	
	1	2	3	4	5	6																																																	
7	8	9	10	11	12	13																																																	
14	15	16	17	18	19	20																																																	
21	22	23	24	25	26	27																																																	
28	29	30																																																					
5	6	7	8	9	10	11																																																	
12	13	14	15	16	17	18																																																	
MOTHER'S DAY																																																							
19	20	21	22	23	24	25																																																	
26	27	28	29	30	31	<div>June 2019</div> <table> <tr><td>S</td><td>M</td><td>T</td><td>W</td><td>T</td><td>F</td><td>S</td></tr> <tr><td></td><td></td><td></td><td></td><td></td><td></td><td>1</td></tr> <tr><td>2</td><td>3</td><td>4</td><td>5</td><td>6</td><td>7</td><td>8</td></tr> <tr><td>9</td><td>10</td><td>11</td><td>12</td><td>13</td><td>14</td><td>15</td></tr> <tr><td>16</td><td>17</td><td>18</td><td>19</td><td>20</td><td>21</td><td>22</td></tr> <tr><td>23</td><td>24</td><td>25</td><td>26</td><td>27</td><td>28</td><td>29</td></tr> <tr><td>30</td><td></td><td></td><td></td><td></td><td></td><td></td></tr> </table>	S	M	T	W	T	F	S							1	2	3	4	5	6	7	8	9	10	11	12	13	14	15	16	17	18	19	20	21	22	23	24	25	26	27	28	29	30						
S	M	T	W	T	F	S																																																	
						1																																																	
2	3	4	5	6	7	8																																																	
9	10	11	12	13	14	15																																																	
16	17	18	19	20	21	22																																																	
23	24	25	26	27	28	29																																																	
30																																																							
	MEMORIAL DAY Bank Closed																																																						



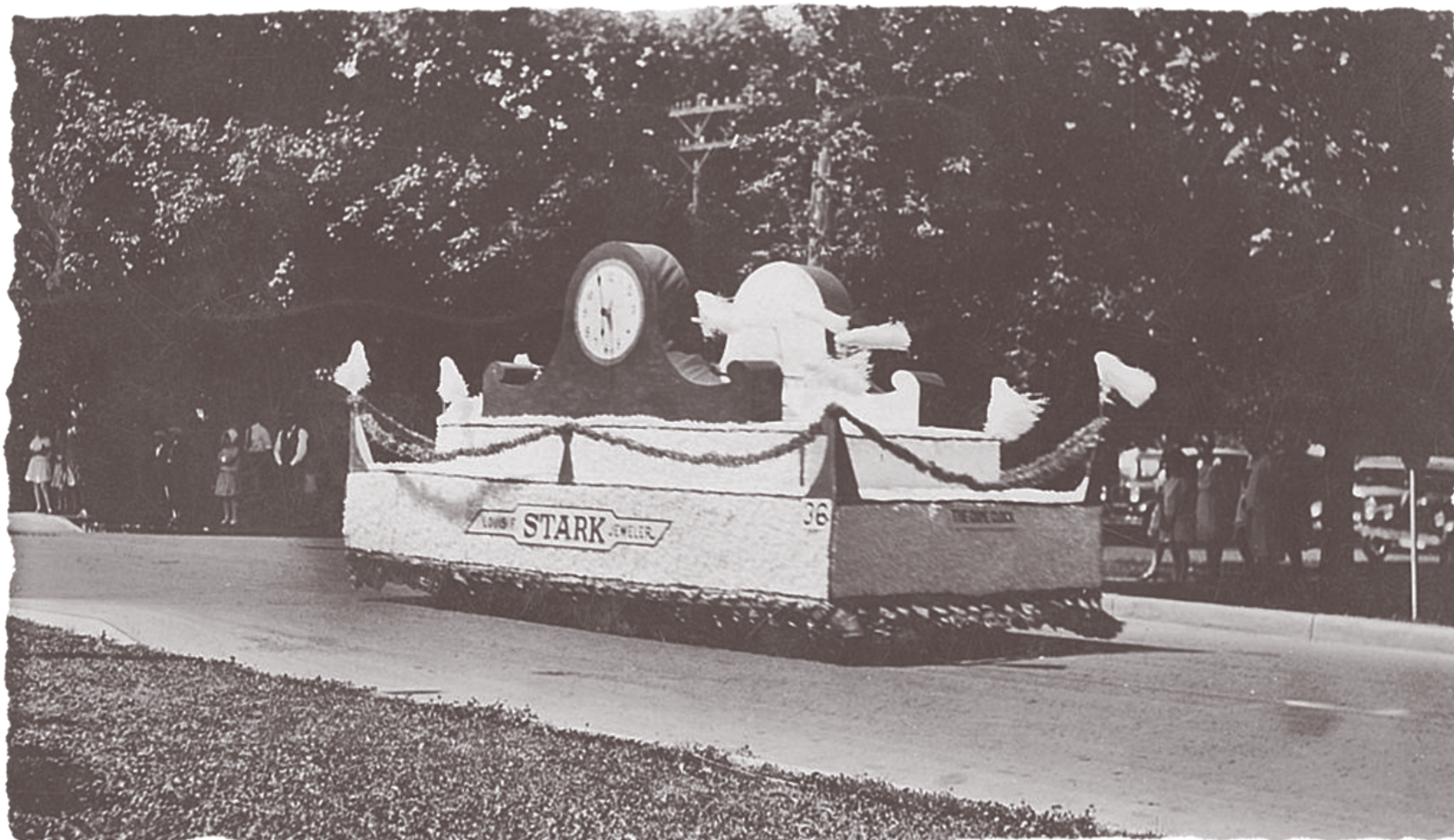
Feed & Grain Mill in Brillion

Built in 1898 by O.C. Behnke Milling Co. Later became Carstens Feed Mill which operated until October, 2010. In 2011 the mill was purchased by Beth Wenzel who has since turned it into a banquet hall for weddings, parties and other events. The new business is appropriately named Carstens Mill.

Photo Submitted by Brillion Historical Society

JUNE 2019

SUNDAY	MONDAY	TUESDAY	WEDNESDAY	THURSDAY	FRIDAY	SATURDAY
				<div>May 2019</div> <div> <div>S M T W T F S</div> <div> <div>1 2 3 4</div> <div>5 6 7 8 9 10 11</div> <div>12 13 14 15 16 17 18</div> <div>19 20 21 22 23 24 25</div> <div>26 27 28 29 30 31</div> </div> </div>	<div>July 2019</div> <div> <div>S M T W T F S</div> <div> <div>1 2 3 4 5 6</div> <div>7 8 9 10 11 12 13</div> <div>14 15 16 17 18 19 20</div> <div>21 22 23 24 25 26 27</div> <div>28 29 30 31</div> </div> </div>	1
2	3	4	5	6	7	8
9	10	11	12	13	14	15
16	17	18	19	20	21	22
FATHER'S DAY					FLAG DAY	
23	24	25	26	27	28	29
30						



This float won first prize at Chilton Homecoming in 1929.

Photos Submitted by Judy Hemauer

JULY 2019

SUNDAY	MONDAY	TUESDAY	WEDNESDAY	THURSDAY	FRIDAY	SATURDAY																																																																																											
	1	2	3	4 INDEPENDENCE DAY Bank Closed	5	6																																																																																											
7	8	9	10	11	12	13																																																																																											
14	15	16	17	18	19	20																																																																																											
21	22	23	24	25	26	27																																																																																											
28	29	30	31	<div> <div>June 2019</div> <table> <tr><th>S</th><th>M</th><th>T</th><th>W</th><th>T</th><th>F</th><th>S</th></tr> <tr><td></td><td></td><td></td><td></td><td></td><td></td><td>1</td></tr> <tr><td>2</td><td>3</td><td>4</td><td>5</td><td>6</td><td>7</td><td>8</td></tr> <tr><td>9</td><td>10</td><td>11</td><td>12</td><td>13</td><td>14</td><td>15</td></tr> <tr><td>16</td><td>17</td><td>18</td><td>19</td><td>20</td><td>21</td><td>22</td></tr> <tr><td>23</td><td>24</td><td>25</td><td>26</td><td>27</td><td>28</td><td>29</td></tr> <tr><td>30</td><td></td><td></td><td></td><td></td><td></td><td></td></tr> </table> </div>	S	M	T	W	T	F	S							1	2	3	4	5	6	7	8	9	10	11	12	13	14	15	16	17	18	19	20	21	22	23	24	25	26	27	28	29	30							<div> <div>August 2019</div> <table> <tr><th>S</th><th>M</th><th>T</th><th>W</th><th>T</th><th>F</th><th>S</th></tr> <tr><td></td><td></td><td></td><td></td><td>1</td><td>2</td><td>3</td></tr> <tr><td>4</td><td>5</td><td>6</td><td>7</td><td>8</td><td>9</td><td>10</td></tr> <tr><td>11</td><td>12</td><td>13</td><td>14</td><td>15</td><td>16</td><td>17</td></tr> <tr><td>18</td><td>19</td><td>20</td><td>21</td><td>22</td><td>23</td><td>24</td></tr> <tr><td>25</td><td>26</td><td>27</td><td>28</td><td>29</td><td>30</td><td>31</td></tr> </table> </div>	S	M	T	W	T	F	S					1	2	3	4	5	6	7	8	9	10	11	12	13	14	15	16	17	18	19	20	21	22	23	24	25	26	27	28	29	30	31	
S	M	T	W	T	F	S																																																																																											
						1																																																																																											
2	3	4	5	6	7	8																																																																																											
9	10	11	12	13	14	15																																																																																											
16	17	18	19	20	21	22																																																																																											
23	24	25	26	27	28	29																																																																																											
30																																																																																																	
S	M	T	W	T	F	S																																																																																											
				1	2	3																																																																																											
4	5	6	7	8	9	10																																																																																											
11	12	13	14	15	16	17																																																																																											
18	19	20	21	22	23	24																																																																																											
25	26	27	28	29	30	31																																																																																											



Hiawatha Bar – Quinney

Oscar Steffen and his pal "Pooch" on the corner steps of the Hiawatha Bar in earlier years. Oscar and his wife Imelda operated the establishment from 1938-1968.

The bar changed owners a few times after that, with Tony Goeser being the last owner before the building was destroyed by fire in 1980.

Photo submitted by Gerald Steffen

AUGUST 2019

SUNDAY	MONDAY	TUESDAY	WEDNESDAY	THURSDAY	FRIDAY	SATURDAY
		July 2019 S M T W T F S 1 2 3 4 5 6 7 8 9 10 11 12 13 14 15 16 17 18 19 20 21 22 23 24 25 26 27 28 29 30 31	September 2019 S M T W T F S 1 2 3 4 5 6 7 8 9 10 11 12 13 14 15 16 17 18 19 20 21 22 23 24 25 26 27 28 29 30	1	2	3
4	5	6	7	8	9	10
11	12	13	14	15	16	17
18	19	20	21	22	23	24
25	26	27	28	29	30	31



Edward Koutnik's Tavern & Grocery Store in Sherwood 1926

This building started out as a general store, later held a saloon and barber shop. Today it is known as The Granary Supper Club.

Photo from Joe Diedrich's collection

SEPTEMBER 2019

SUNDAY	MONDAY	TUESDAY	WEDNESDAY	THURSDAY	FRIDAY	SATURDAY																																																																																					
1	2 <div>LABOR DAY Bank Closed</div>	3	4	5	6	7																																																																																					
8	9	10	11	12	13 <div>Customer Appreciation Day</div>	14																																																																																					
15	16	17	18	19	20	21																																																																																					
22	23	24	25	26	27	28																																																																																					
29	30	<div>August 2019</div> <table><tr><th>S</th><th>M</th><th>T</th><th>W</th><th>T</th><th>F</th><th>S</th></tr><tr><td></td><td></td><td></td><td></td><td>1</td><td>2</td><td>3</td></tr><tr><td>4</td><td>5</td><td>6</td><td>7</td><td>8</td><td>9</td><td>10</td></tr><tr><td>11</td><td>12</td><td>13</td><td>14</td><td>15</td><td>16</td><td>17</td></tr><tr><td>18</td><td>19</td><td>20</td><td>21</td><td>22</td><td>23</td><td>24</td></tr><tr><td>25</td><td>26</td><td>27</td><td>28</td><td>29</td><td>30</td><td>31</td></tr></table>		S	M	T	W	T	F	S					1	2	3	4	5	6	7	8	9	10	11	12	13	14	15	16	17	18	19	20	21	22	23	24	25	26	27	28	29	30	31	<div>October 2019</div> <table><tr><th>S</th><th>M</th><th>T</th><th>W</th><th>T</th><th>F</th><th>S</th></tr><tr><td></td><td></td><td></td><td></td><td>1</td><td>2</td><td>3</td></tr><tr><td>4</td><td>5</td><td>6</td><td>7</td><td>8</td><td>9</td><td>10</td></tr><tr><td>11</td><td>12</td><td>13</td><td>14</td><td>15</td><td>16</td><td>17</td></tr><tr><td>18</td><td>19</td><td>20</td><td>21</td><td>22</td><td>23</td><td>24</td></tr><tr><td>25</td><td>26</td><td>27</td><td>28</td><td>29</td><td>30</td><td>31</td></tr></table>		S	M	T	W	T	F	S					1	2	3	4	5	6	7	8	9	10	11	12	13	14	15	16	17	18	19	20	21	22	23	24	25	26	27	28	29	30	31		
S	M	T	W	T	F	S																																																																																					
				1	2	3																																																																																					
4	5	6	7	8	9	10																																																																																					
11	12	13	14	15	16	17																																																																																					
18	19	20	21	22	23	24																																																																																					
25	26	27	28	29	30	31																																																																																					
S	M	T	W	T	F	S																																																																																					
				1	2	3																																																																																					
4	5	6	7	8	9	10																																																																																					
11	12	13	14	15	16	17																																																																																					
18	19	20	21	22	23	24																																																																																					
25	26	27	28	29	30	31																																																																																					



St. Martin Catholic Church, Charlestown – 1908

St. Martin Parish adult cemetery, with its white limestone tombstones, can be seen on the right side of the church. In 1920 the parish received permission to transfer those graves to the cemetery behind the church to make way for the building of a pastor's residence. St. Martin parish closed in 2005 and the property, minus the cemetery, is now St. Martin Heritage Park.

Photo Submitted by St. Martin Heritage Park

OCTOBER 2019

SUNDAY	MONDAY	TUESDAY	WEDNESDAY	THURSDAY	FRIDAY	SATURDAY																																										
	<div>September 2019</div> <table><tr><td>S</td><td>M</td><td>T</td><td>W</td><td>T</td><td>F</td><td>S</td></tr><tr><td>1</td><td>2</td><td>3</td><td>4</td><td>5</td><td>6</td><td>7</td></tr><tr><td>8</td><td>9</td><td>10</td><td>11</td><td>12</td><td>13</td><td>14</td></tr><tr><td>15</td><td>16</td><td>17</td><td>18</td><td>19</td><td>20</td><td>21</td></tr><tr><td>22</td><td>23</td><td>24</td><td>25</td><td>26</td><td>27</td><td>28</td></tr><tr><td>29</td><td>30</td><td></td><td></td><td></td><td></td><td></td></tr></table>	S	M	T	W	T	F	S	1	2	3	4	5	6	7	8	9	10	11	12	13	14	15	16	17	18	19	20	21	22	23	24	25	26	27	28	29	30						1	2	3	4	5
S	M	T	W	T	F	S																																										
1	2	3	4	5	6	7																																										
8	9	10	11	12	13	14																																										
15	16	17	18	19	20	21																																										
22	23	24	25	26	27	28																																										
29	30																																															
6	7	8	9	10	11	12																																										
13	14	15	16	17	18	19																																										
	COLUMBUS DAY Bank Open Regular Hours																																															
20	21	22	23	24	25	26																																										
27	28	29	30	31	<div>November 2019</div> <table><tr><td>S</td><td>M</td><td>T</td><td>W</td><td>T</td><td>F</td><td>S</td></tr><tr><td></td><td></td><td></td><td></td><td></td><td>1</td><td>2</td></tr><tr><td>3</td><td>4</td><td>5</td><td>6</td><td>7</td><td>8</td><td>9</td></tr><tr><td>10</td><td>11</td><td>12</td><td>13</td><td>14</td><td>15</td><td>16</td></tr><tr><td>17</td><td>18</td><td>19</td><td>20</td><td>21</td><td>22</td><td>23</td></tr><tr><td>24</td><td>25</td><td>26</td><td>27</td><td>28</td><td>29</td><td>30</td></tr></table>	S	M	T	W	T	F	S						1	2	3	4	5	6	7	8	9	10	11	12	13	14	15	16	17	18	19	20	21	22	23	24	25	26	27	28	29	30	
S	M	T	W	T	F	S																																										
					1	2																																										
3	4	5	6	7	8	9																																										
10	11	12	13	14	15	16																																										
17	18	19	20	21	22	23																																										
24	25	26	27	28	29	30																																										
				HALLOWEEN																																												



Blob's Tavern - Stockbridge

Joe and Gertie Blob converted a former grocery store located on the east side of main street into a bar know as Blob's Tavern. Joe is shown behind the bar. In later years, Gertie operated the business, serving only soft drinks and catered more to the younger generation.

Some Photos submitted by Bob and Nancy Wilson

NOVEMBER 2019

SUNDAY	MONDAY	TUESDAY	WEDNESDAY	THURSDAY	FRIDAY	SATURDAY
			<div>October 2019</div> <div> <div>S M T W T F S</div> <div>1 2 3 4 5</div> <div>6 7 8 9 10 11 12</div> <div>13 14 15 16 17 18 19</div> <div>20 21 22 23 24 25 26</div> <div>27 28 29 30 31</div> </div>	<div>December 2019</div> <div> <div>S M T W T F S</div> <div>1 2 3 4 5 6 7</div> <div>8 9 10 11 12 13 14</div> <div>15 16 17 18 19 20 21</div> <div>22 23 24 25 26 27 28</div> <div>29 30 31</div> </div>	1	2
3	4	5	6	7	8	9
DAYLIGHT SAVING TIME ENDS						
10	11	12	13	14	15	16
	VETERANS DAY					
17	18	19	20	21	22	23
24	25	26	27	28	29	30
				THANKSGIVING DAY Bank Closed		



Brillion Train Depot • 1922

First mail in five days received at the depot following the ice storm in February of 1922.

Photo Submitted by Brillion Historical Society and Don Dorn

DECEMBER 2019

SUNDAY	MONDAY	TUESDAY	WEDNESDAY	THURSDAY	FRIDAY	SATURDAY
1	2	3	4	5	6	7
8	9	10	11	12	13	14
15	16	17	18	19	20	21
22	23	24	25	26	27	28
29	30	31	<div> <div> November 2019 S M T W T F S 1 2 3 4 5 6 7 8 9 10 11 12 13 14 15 16 17 18 19 20 21 22 23 24 25 26 27 28 29 30 </div> <div> January 2020 S M T W T F S 1 2 3 4 5 6 7 8 9 10 11 12 13 14 15 16 17 18 19 20 21 22 23 24 25 26 27 28 29 30 31 </div> </div>			
		CHRISTMAS EVE Bank Closed at Noon	CHRISTMAS DAY Bank Closed			
		NEW YEAR'S EVE				

STATE BANK of CHILTON
A trusted partner since 1891

CHILTON OFFICE
26 E. Main St.
P.O. Box 149
Chilton, WI 53014
Phone (920) 849-9371

BRILLION OFFICE
103 N. Main Street
Brillion, WI 54110
Phone (920) 756-2181

MILWAUKEE OFFICE
7155 North 76th St.
Milwaukee, WI 53223
Phone: (414) 358-3971

SHERWOOD OFFICE
W4443 Veterans Ave.
Sherwood, WI 54169
Phone: (920) 989-2781

STOCKBRIDGE OFFICE
401 W. Lake Street
P.O. Box 28
Stockbridge, WI 53088
Phone: (920) 439-1414

www.statebankofchilton.com

MEMBER FDIC

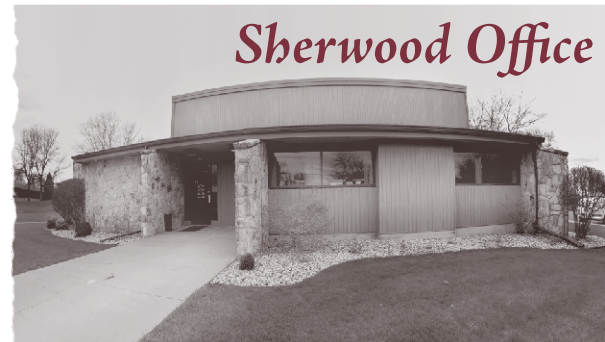
Chilton Office



Brillion Office



Sherwood Office



Stockbridge Office



Milwaukee Office



STATE BANK of CHILTON
A trusted partner since 1891

CHILTON OFFICE

26 E. Main St.
P.O. Box 149
Chilton, WI 53014
Phone (920) 849-9371

BRILLION OFFICE

103 N. Main Street
Brillion, WI 54110
Phone (920) 756-2181

MILWAUKEE OFFICE

7155 North 76th St.
Milwaukee, WI 53223
Phone: (414) 358-3971

SHERWOOD OFFICE

W4443 Veterans Ave.
Sherwood, WI 54169
Phone: (920) 989-2781

STOCKBRIDGE OFFICE

401 W. Lake Street
P.O. Box 28
Stockbridge, WI 53088
Phone: (920) 439-1414

www.statebankofchilton.com

MEMBER FDIC