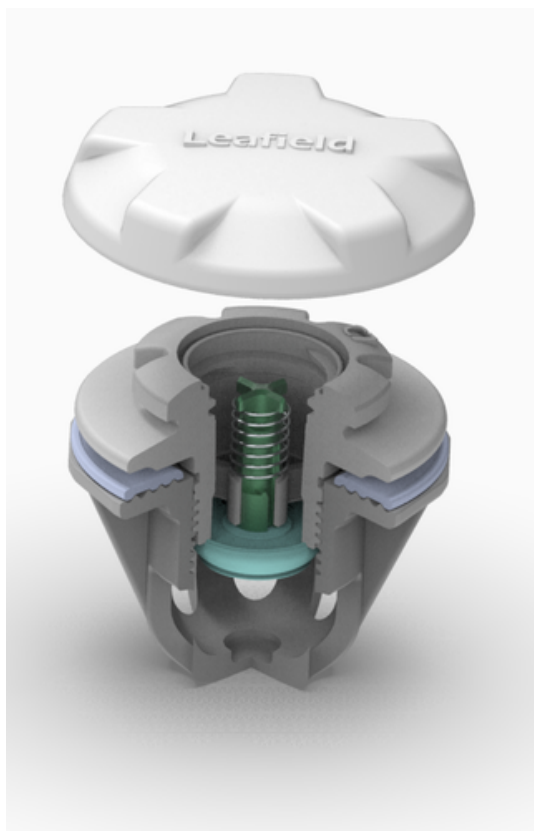




# Leaffield Marine

Air valves for inflatable tents & structures







# INFLATABLE TENTS & STRUCTURES

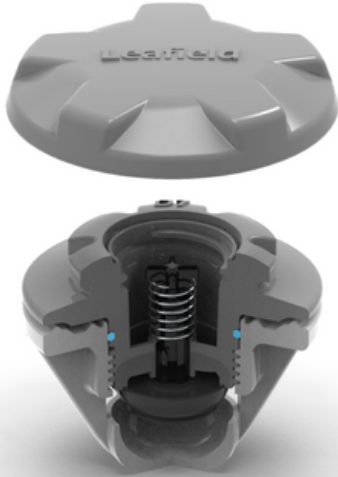
The Leaffield Marine range of valves are ideal for a wide variety of inflatable structures. These include tent awnings, emergency shelters, decontamination tents, promotional inflatables, lifting bags, rescue platforms, water park equipment, gym mats, walls, crash barriers, oil booms and even art installations!

Although we are well-known for our valves for inflatable boats and life rafts, we work with many unique companies to find optimum air valve solutions.

Leaffield Marine are focused on designing safe and reliable products. Many companies use our valves and systems in lifesaving scenarios. Our valves for inflatable tents are popular with manufacturers of emergency inflatable shelters and decontamination tents due to their rapid inflation times and long-term reliability.

# D7 INFLATION/ DEFLATION VALVE

The D7 valve is designed for use in demanding applications where a compact design is required; such as Military and Commercial RIBs, inflatable tents, and emergency shelters.



## D7 Key attributes and benefits:

- High flow for size.
- Rugged and reliable.
- Low profile at 50mm overall height.
- Smooth, snag free cap.
- 'O' ring seal on the valve core to reduce the risk of lateral leaks in the fabric.

- 100% tested during production.
  - ACETAL (POM) plastic parts give high strength, chemical, ozone and shock resistance.
  - Cap works as a second seal
  - Internal cap strap.
  - Core available in grey or black.
- Caps available in grey, black, white or yellow.
- Company brand can be added to the cap, subject to a minimum quantity and tooling charge.







# PRESSURE RELIEF VALVES

In intense environments, you want to be confident that your products will maintain optimum functionality. With changes in weather and temperature, it is essential that the air pressure in your shelter is stable. Leaffield Marine design and manufacture several types of pressure relief valves to protect the structure from over inflation due to solar heat.

Pressure relief valves are used on a variety of different inflatable structures, from large inflatable buildings to RIBs. They are an essential device to maintain the structure of a product.

Leaffield Marine have designed various Pressure Relief Valves for different applications. However, the A6 is one of our most popular. It has become a firm favourite with many manufacturers of life rafts, shelters, and tents. It is also ideal for any use where compact and reliable valves are critical. The pressures are accurately pre-set to your product requirements.

# A6 PRESSURE RELIEF VALVE

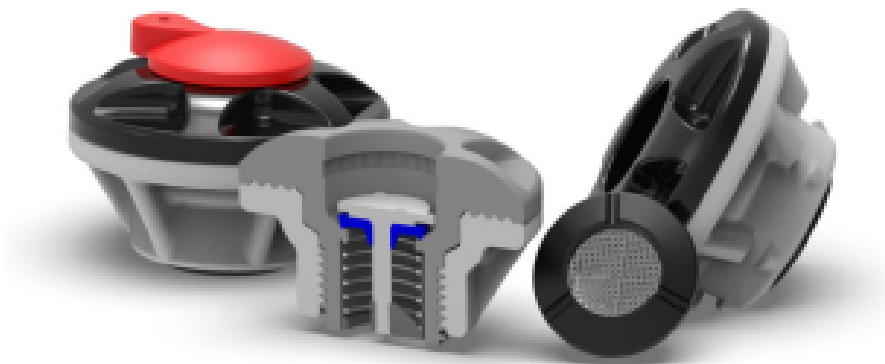
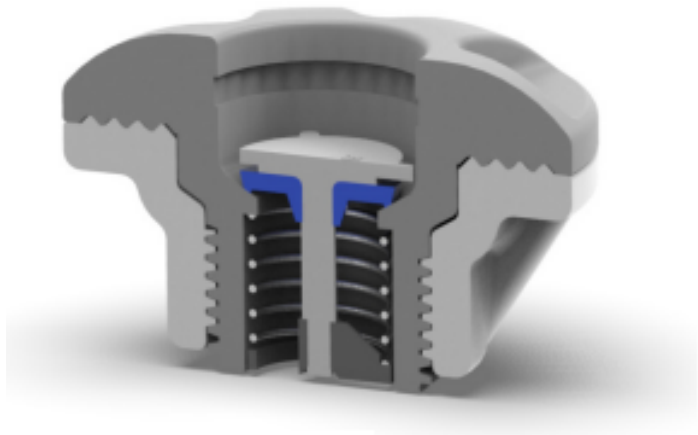
The A6 Pressure Relief Valve is ideal for any application where compactness and reliability are critical. The opening and closing pressures are accurately pre-set and repeatable.



## A6 Key attributes and benefits:

- Protects the structure from over inflation and excess pressure due to solar heat.
- Approved to ISO 9650 and ISO 15738 as a transfer valve.
- Type Approval Certificate available on request
- Smooth, low profile.
- Materials have high UV resistance.
- 100% tested for opening and closing pressures.
- Rapid installation with clamp fitting.
- Operating temperature: -30°C to +65 °C.

- The valve is available in grey, black or white.
- Filter caps are available to stop debris entering the valve
- A secondary seal plug is available for test purposes (prevents pressure relief function from working)



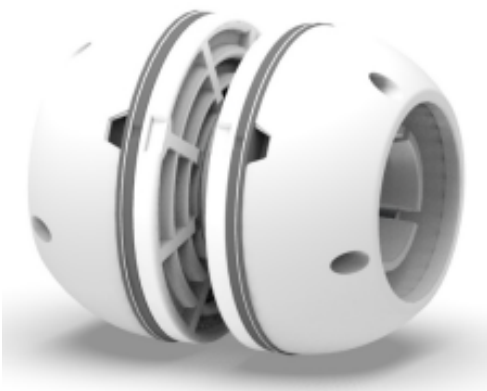




# SNAP FIT CONNECTOR ASSEMBLY

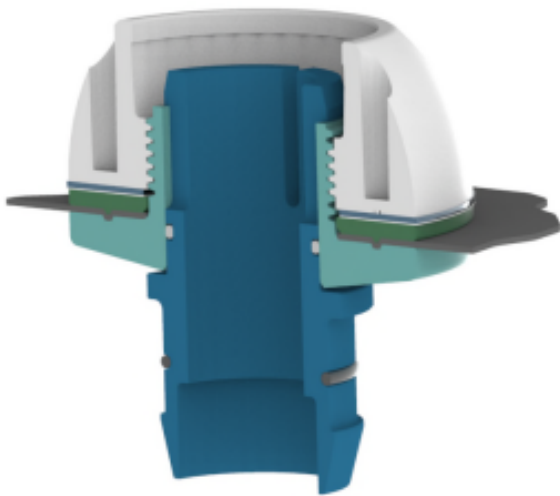
Snap fit connectors allow inflatable shelters to be constructed rapidly. They connect adjoining chambers of an inflatable tent. This, in effect, creates a single modular structure, with one point of inflation and deflation. As a result, inflation becomes far more simple and much faster.

A snap fit connector assembly provides a high flow rate between chambers. It clamps onto the fabric to create a leakproof and robust fit. This method is compatible with a wide range of fabrics, tubes, and chambers.



# SNAP FIT CONNECTOR ASSEMBLY

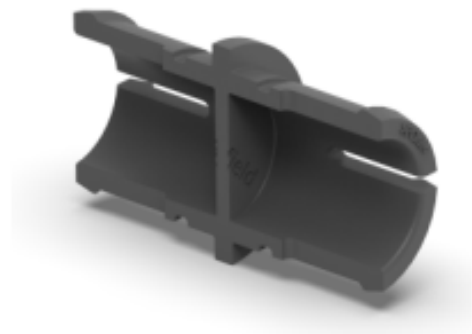
The Snap Fit Connector allows connections to be made between adjoining inflatable chambers, for example tent and boat chambers.



## Snap Fit Connector Key attributes:

- Allows high gas flow between chambers.
- No routine maintenance required.
- Robust and leak tight.
- Clamps into a wide range of fabrics.
- Accessories are available to blank off chamber connections or to allow inflation of separate chambers.

Blanking Tube: Part Number: 1502006  
For Assembly including Blanking Tube  
and Body: 1408002



Blanking Plug: Part Number: 1005003  
For Assembly including Blanking Plug  
and Body: 1211002



# LEAFIELD MARINE'S CUSTOMISATION OPTIONS



The sleek valves from Leaffield Marine are available in several colours. The A9 and D7 cores, for example, are available in black or grey. The caps for the D7 are available in black, grey, yellow, or white. As a result, you can be assured that the valve will match your product design and maintain a sleek low-profile.

Our valve caps can be custom-made to feature company branding. We can include your logo or company name and will work with you to create a design that you're happy with. This option is subject to minimum order requirements.





# Leaffield Marine

Leaffield Marine is based in the UK, in the heart of the Wiltshire countryside, with in-house design and production.

We first started designing and producing valves for inflatable boats in 1965. Since then, our range of products has grown to include specialist inflation systems and air valves for many inflatable structures including commercial, leisure and military applications, supplying many of the world leaders in these markets.

At Leaffield Marine, we are renowned for our engineering strength and work closely with customers in the product design phase, ensuring our products fully satisfy our customers' needs. This is particularly important for many of our technical and specialist products such as our gas inflation systems for life rafts.



We are ISO 9001:2015 registered company with many of our products also approved to SOLAS (ISO:15738), PE(S)R and PED standards.

Leaffield Marine has been accredited with Approved Exporter Status as governed by UK HM Revenue and Customs. This opens the way for simpler trading between Leaffield Marine and countries entered into Free Trade Agreements.

# WHAT OUR CUSTOMERS SAY

"I go rafting to be in the moment, so I don't want to think about my gear. Thankfully, I never have to think about my Leaffield valves."

- Member of the NRS Team

Gemini have been using the tried and tested Leaffield Valves in our commercial & professional RIBS for many years and will continue to do so.

- Gemini Marine Team

For more than 25 years, we have been Leaffield's US distributor.

Their expertise in design, manufacturing and customer service is second to none. Great support, timely deliveries and cutting edge engineering, we are proud to team up with them.

- River Gear Team

We've always been very happy with the quality of Leaffield's products for use in our oil booms. The service they offer has always been great and they consistently fulfil orders on time to meet our project requirements.

- Vikoma International Team





# Leaffield

## Marine



To view our full product range on our website, scan the QR code below



Tel: +44 (0)1225 899550 Email: [sales@leaffieldmarine.co.uk](mailto:sales@leaffieldmarine.co.uk)