



# Pinnaca Keypoint

---

Pinnaca  
Keypoint, 17-23 High Street,  
Slough, Berkshire  
SL1 1DY

## By Car

1. By Car Exit the M4 motorway at Junction 6.
  2. At the roundabout take the third exit onto Tunns Lane (A355).
  3. At roundabout take the second exit, Tunns Lane (A355).
  4. Turn right onto Bath Road (A4) and continue along the A4.
- 

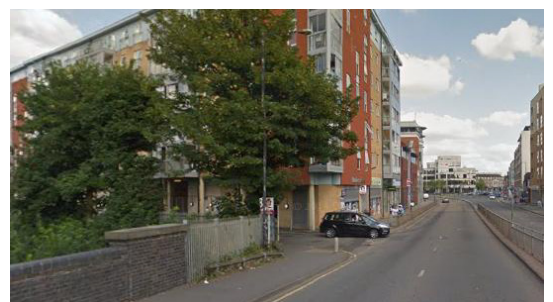
## Parking

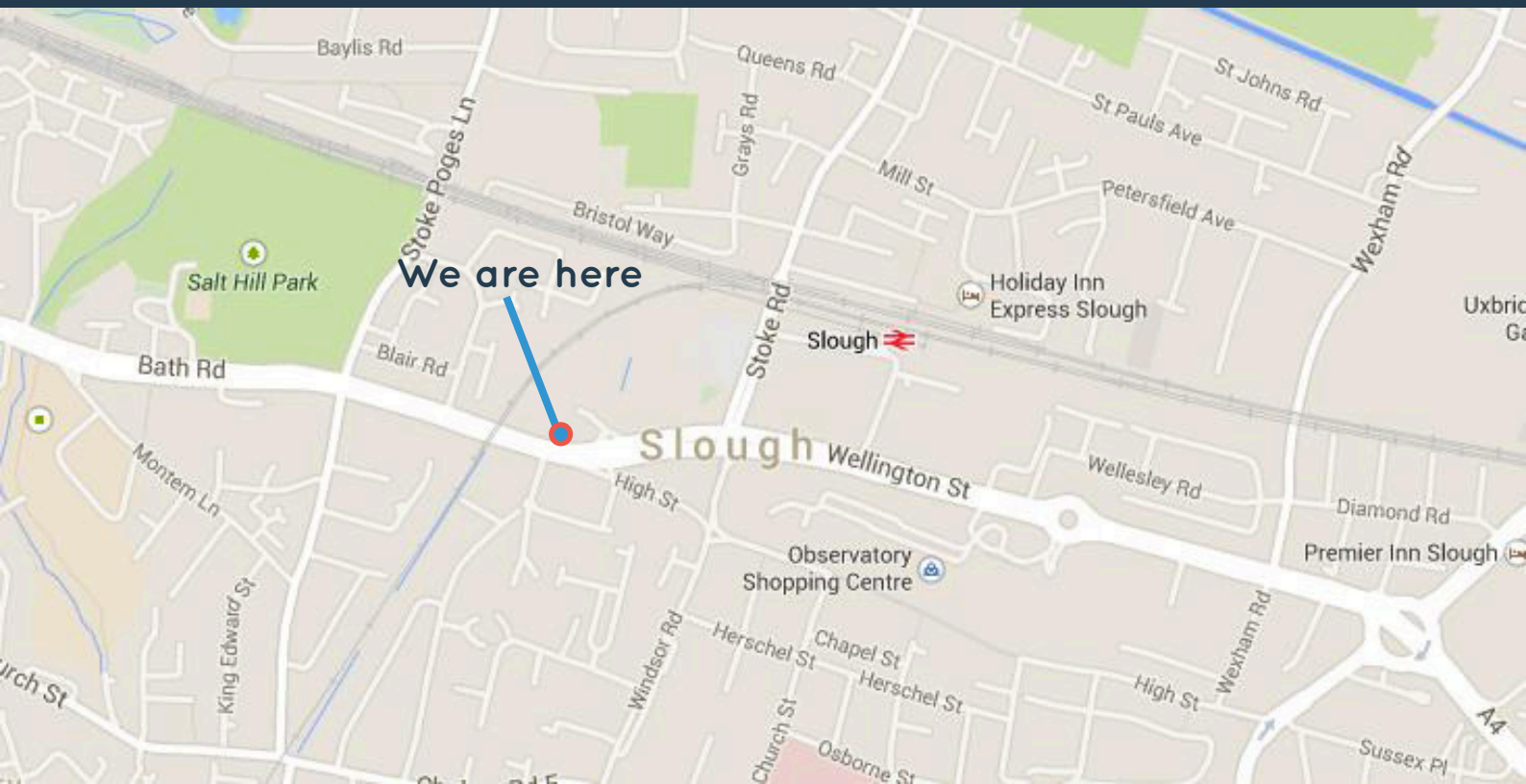
1. When traveling down Bath Road/ A4.
2. Look out for a 'KwikFit' on the right hand side (a).
3. Ensure you are in the left hand lane.
4. The entrance to the car park is your next left over a small bridge just before the red brick building (b).
5. Please use the Keypoint designated car park.

A



B





---

### By Rail

The Pinnaca Slough office is located just 15 minutes from London Paddington on Network Rail Services. For more information on rail services please visit <http://www.firstgreatwestern.co.uk> or [www.nationalrail.co.uk](http://www.nationalrail.co.uk).

When leaving the station, head west toward Brunel Way. Turn left onto Brunel Way and then turn right onto Wellington St/A4. Continue to follow A4 and the destination will be on the right.

---

### By Bus

Slough is easily commutable from Heathrow, Reading and Windsor via bus services. Exit the Bus Station and head west on Brunel Way toward William St/ B416. Turn left onto William St/B416 and then turn right onto Wellington St/ A4. Continue to follow A4 and the destination will be on the right.