



mr.steam®

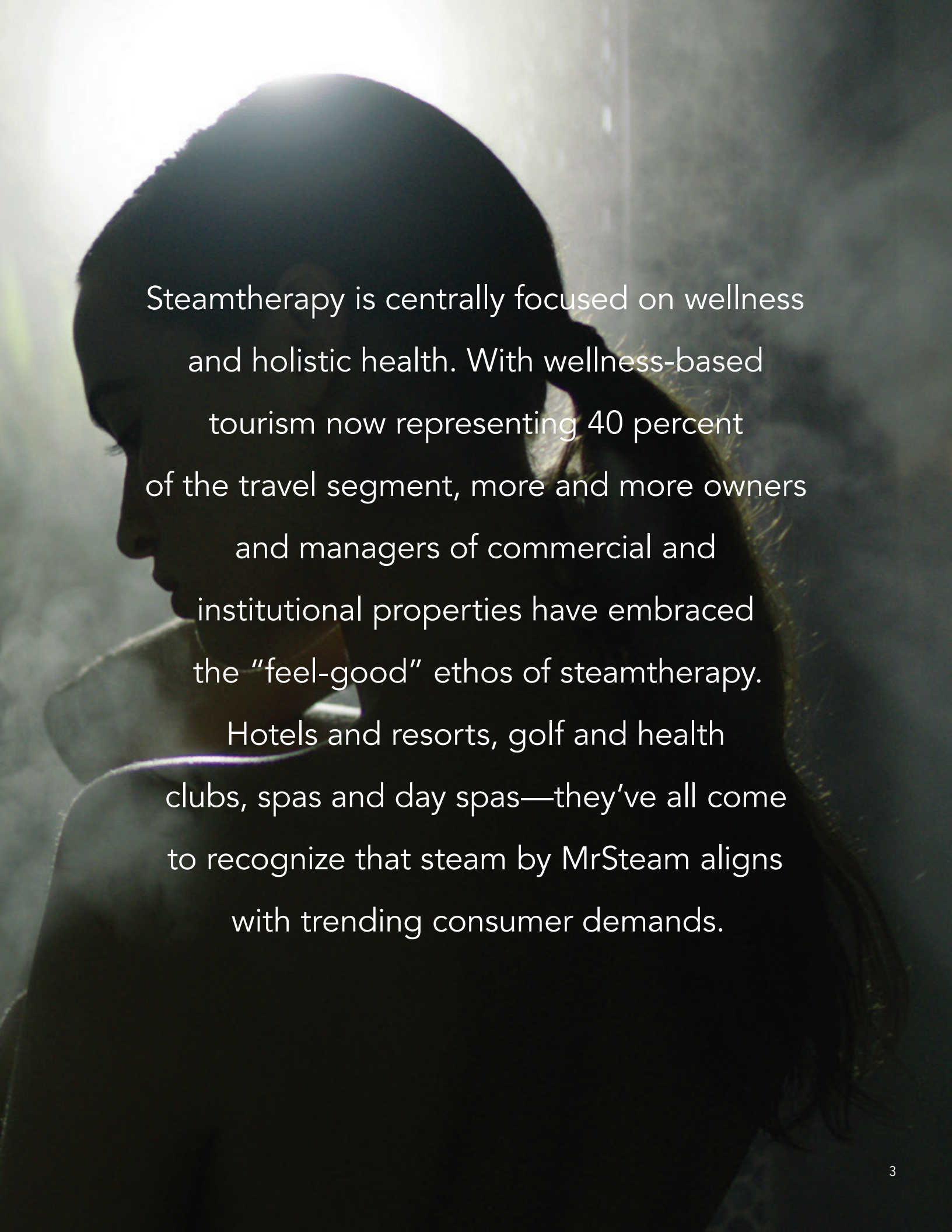
Feel Good Inc.

**Designing Steam Showers
for the Travel &
Wellness Consumer**

Whether resort, hotel or spa based, we'll help add value for you and your customers.

Table of Contents

Introduction	3
An easy, flexible and durable solution	4
Why in your resort or hotel?	5
Building your vision (the room)	6
Building your vision (the components)	7
Customizing the experience	8
Power requirements	9
Maintenance requirements	10
Choosing the right system	12
Next steps for your business	13
About MrSteam	14



Steamtherapy is centrally focused on wellness and holistic health. With wellness-based tourism now representing 40 percent of the travel segment, more and more owners and managers of commercial and institutional properties have embraced the “feel-good” ethos of steamtherapy.

Hotels and resorts, golf and health clubs, spas and day spas—they’ve all come to recognize that steam by MrSteam aligns with trending consumer demands.

An easy solution ...



Innovations in the world of steam technology have made MrSteam systems more attractive and more affordable for commercial use in hotels and spas. Steamtherapy is easy for your guests to enjoy and simple for you to incorporate into your guest amenities. Creating the perfect guest experience requires these components, which are familiar to any construction manager or contractor:

- Properly sized steam generator
- Steam head in the shower area
- Temperature and time regulator
- Floor-to-ceiling gasketed door
- Floor drain

A flexible solution ...



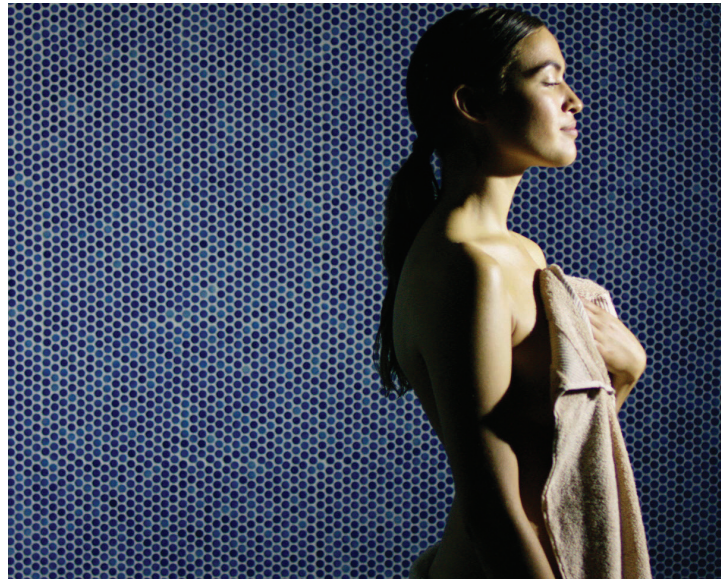
Although most commercial installations feature ceramic tile on both the walls and ceiling, marble and granite are also specified. As long as the material is nonporous and water-resistant, it can be used. Match the look and feel of your existing facility, or create something new from your vision of the perfect steam environment.

A durable solution ...

MrSteam generators are crafted with stainless-steel jackets that resist rust and last longer, even in wet environments. Thanks to its stainless-steel construction, the unit is recyclable and won't end its days in a landfill.



Why in your resort or hotel?



Trending now ... What consumers want

Spas that provide “Relaxation Areas” like steam rooms ...

Why? They offer:

- A point of differentiation for your spa
- Add to the total spa experience
- Promote more spa use by encouraging a longer stay
- Provide space for “social spa-ing”¹

A desire to see and feel a difference through unique spa therapies.

What do Spa guests want? Top four responses from Spa Managers²:

1. Results 2. Wellness 3. Many options 4. Innovation

Steamtherapy plays a major role in all of these!

Wellness tourism or “fit-centric” vacations³:

- \$439 billion market
- Category will grow nine percent annually through 2017
- Wellness tourists spend 130 percent more annually than average tourists

¹From Hotel Business Review: “See the Future – Spa Trends Worth Noting” by Jane Segerberg.

²From Hotel Business Review: “Hotel Spas: What Does the Client Want?” by Jacqueline Clark.

³SRI International for the Global Spa & Wellness Summit (GSWS)

Building your vision.

This is the fun part

The part where you get to dream a little and build something beautiful ... make it minimalistic, elaborate or purely functional. Something that's going to make your guests feel good. Something that's going to differentiate your business. Start with the basics ...

The Room



**The sky's the limit in terms of design.
But there are a few basics to think about
when designing your room:**

Your steam room will require a waterproof membrane behind the walls to keep steam from escaping. It will also need a bench or other seating area, a ceiling that slopes away from the user, so that condensation can comfortably run off; and a floor drain. The ceiling height should be around eight feet for optimal steaming.

Add an ADA-compliant, gasketed door to keep steam in, a little air infiltration so that steam is visible, and you've got the makings of a feel-good steam experience. Admit it - you thought this was going to be harder. It's not.



The Components ...

MrSteam components are designed to function flawlessly.



Components include:

A MrSteam steam generator made with a carbon steel pressure vessel that meets ASME and National Board requirements for low-pressure operation. They come standard with long life stainless steel heating elements.

A Digital 1 Temperature control system with built in backup temperature shutoff and a temperature regulator for controlling the warmth of the steam. ***It is available with an Automatic Blowdown system*** complete with 24 hour 7 day automatic start up shutdown and Blowdown operation reducing daily maintenance. MrSteam products are designed, engineered and assembled in the USA and are UL listed in the U.S. and Canada. Each one is manufactured to the same exacting standards demanded by the U.S. Navy, the Centers for Disease Control and Prevention (CDC) and hospital operating rooms.



For a complete list of facilities that feature MrSteam products, or to find a place to experience MrSteam yourself, visit www.mrsteam.com/try-us-out

Some of the best known hotels feature MrSteam systems



Left to Right: Canyon Ranch, Las Vegas • Mandarin Oriental Hotel, Miami
The Palms Hotel, Miami Beach • Disney's Aulani Hawaii Resort & Spa, Hawaii

Customizing the experience.

**Now for the really fun part. You've chosen steam.
You've imagined a room. Now make it a multi-sensory
experience not soon to be forgotten.**



Aromatherapy

The soft, calming scent of lavender. The crisp, energizing scent of evergreen. Scent speaks to our emotions without saying a word. Coupled with the healing power of steam, aromatherapy can bring your clients to another level of enjoyment and wellness. The AromaSteam option is available on most systems, and is connected via an automatic electronic dispenser. MrSteam offers five essences for steam showers of any size.



Lighting

For lighting, MrSteam offers, vapor-proof, recessed lights that offer just the right amount of soft light for optimal relaxation while providing a safe environment. To add yet another dimension to your steam shower, MrSteam ChromaSteam™ lighting is also available for some installations. Low voltage LED modules suffuse the room with the soft glow of six mood-enhancing colors that can be set to cycle or remain constant.



Sound Therapy

Our MrSteam commercial CU speakers bring the healing properties of music to your steam shower. Suitable for most audio input sources, add a relaxing soundtrack to guests' experience with flush mount two-way speakers designed to be enjoyed inside the shower enclosure.

"Music washes away from the soul the dust of everyday life." - Berthold Auerbach



Aromatherapy, did you know ...

Studies have linked aromatherapy to relief from anxiety and depression, as well as improved quality of life.⁴ MrSteam has a wide variety of essences formulated for the optimal steam shower experience.

Eucalyptus • Refreshing and cleansing, opens nasal passages

Lavender • Calming and restorative, soothes anxiety

Evergreen • Refreshing and uplifting, clears the mind

Mint • Clear and crisp, stimulates and energizes

Breathe • Tropical and Bright, clears chest, nose and sinuses

⁴Brent A. Bauer, MD, Mayoclinic.org: "What are the benefits of aromatherapy?"

Power Requirements:

Power wiring

1. Check power voltage. Confirm it is the same voltage that is specified on the unit.
2. Use minimum 90°C rated insulated copper conductors only, type THHN or equal sized in accordance with National Electrical Code and local electrical code for the Amps in Ampere Chart.
3. Connect suitably sized equipment grounding wire to ground terminal provided.
4. Install a dedicated circuit with adequately sized fuses or circuit breaker between supply and unit provide a disconnect switch within sight of the steam generator or one that is capable of being locked in the open position.
5. An additional 120VAC circuit is required to run the controls inside the boiler if the transformer has not been added as a factory option.

Electrical

All electrical wiring to be installed by a qualified licensed electrician in accordance with the National Electrical Code and local electrical code.

Maintenance Requirements:

Water Quality Information

For optimum results, the water supply should be tested prior to installation. If the mineral content exceeds the following recommended limits, various external treatment processes are recommended to correct the problem.

NOTE: An analysis of the on-site water must be made by a recognized and reliable water treatment company to ascertain the existing condition and treatment required.

Poor water quality can affect efficiency or result in steam generator damage.

Water contains impurities in solution and suspension. These impurities concentrate in the generator. The concentration of these impurities increases as more feedwater is introduced into the generator and steam is produced. If the suspended solids are allowed to concentrate beyond certain limits, a deposit or “scale” will form on the generator internal surfaces. This deposit can interfere with the proper generator operation and cause generator failure. The concentration of these impurities is generally controlled by the water quality and by periodic draining of the generator.



Recommended Feedwater Quality

Hardness, ppm 8-85 (~0.5 – 5gpg)

P-Alkalinity, ppm 85 – 410 (~5 – 24gpg)

T. Alkalinity, ppm 200-500 (~7 – 0gpg)

pH (strength of alkalinity) 8.0 – 11.4

Every 2 months, or more often in “hard” water areas, the manual drain valve should be opened fully flushing out accumulated materials, salts and other particles which are natural by-products of boiling water.

The optional AutoBlowdown System feature automatically drains the MrSteam® generator following each use. A time delay allows the water to cool down (about two hours) before it drains by gravity for a safe and gentle operation.

Maintenance Requirements:

A commercial system that runs over many hours each day is particularly vulnerable. Left unchecked, this sediment will leave a thick coat on the generator element, undermining performance and even risking premature failure. It can also cake up inside the generator tank, displacing the water. In short, removing this sediment quickly and efficiently helps sustain the performance and the longevity of the system.

The best way to do this is by flushing the system on a regular basis. Light commercial systems often employ an automatic flushing system after each usage to remove any impurities from the generator and its tank, while providing the next bather with fresh water for steam.

Larger, heavy-duty commercial systems employ a similar and equally essential device: an automatic blowdown drain kit that can be programmed to flush the entire system at preset intervals, such as when the unit is shut down overnight. Certain municipalities require that the blowdown discharge to be 60°C (140°F) or less. Under such circumstances, a companion blowdown tank that conforms to ASME Section VIII is used to cool the hot water until it reaches the permissible temperature.

Even with these automatic flushing devices, a highly active commercial steam system demands a regular maintenance schedule. Frequency depends on usage, and every generator manufacturer has a set of recommendations to be followed to keep its tank free of sediment. But a thorough system inspection and cleaning every 30 days is highly recommended in hard water areas and at least every 90 days in soft water locales. The pipes leading to the blowdown drain should also be checked regularly for sediment buildup.

AMPERAGE CHART

Indicates total ampere draw of specific CU model at voltage & phase specified

Model No.	kW	208V/1 PH	208V/3 PH	240V1 PH	240V3 PH	480V3 PH	600V3 PH
CU-360	9	44	25	38	22	11	9
CU-500	12	58	34	50	29	15	12
CU-750	18	87	50	75	44	22	18
CU-1000	24	116	67	100	58	29	24
CU-1250	30	145	84	125	73	37	29
CU-1400	36	-	100	-	87	44	35
CU-2000	48	-	134	-	116	58	47
CU-2500	60	-	167	-	145	73	58
CU-3000	72	-	200	-	174	87	70
CU-4500	108	-	300	-	260	130	104

IMPORTANT: Use minimum 30 insulated copper conductors only for field wiring sized in accordance with National and local electric Codes.

NOTE: Consult factory for other voltage/phase combinations. CU generators are suitable for 50/60 hz. Standard control circuit voltage for above V/PH combinations for United States, Canada and Mexico is 120 VAC. Exception: 220-240 VAC control circuit voltage is provided on non-domestic product where power voltage is 220-240 V/3 PH, 380V/3PH, 415V/3 PH, etc.

Choosing the Right System:

Once you've chosen steam, and realized all the benefits it can bring your guests and your business, it's time to select your MrSteam system.

Online sizing tools and MrSteam Showroom Consultants (*available by phone, email or in person*) will assist your team through every step of the system selection process to ensure easy and accurate sizing.

1. System type:

Commercial System for larger applications which require always-on status for three+ bathers; or ... Light Commercial/Day-Spa System for a less-busy environment for one to two bathers.

2. System sizing

Generator sizing is based on construction materials, room size and design features. Because proper sizing is key to the successful operation and optimal enjoyment of a steam shower, our team will recommend the perfect size for your application.

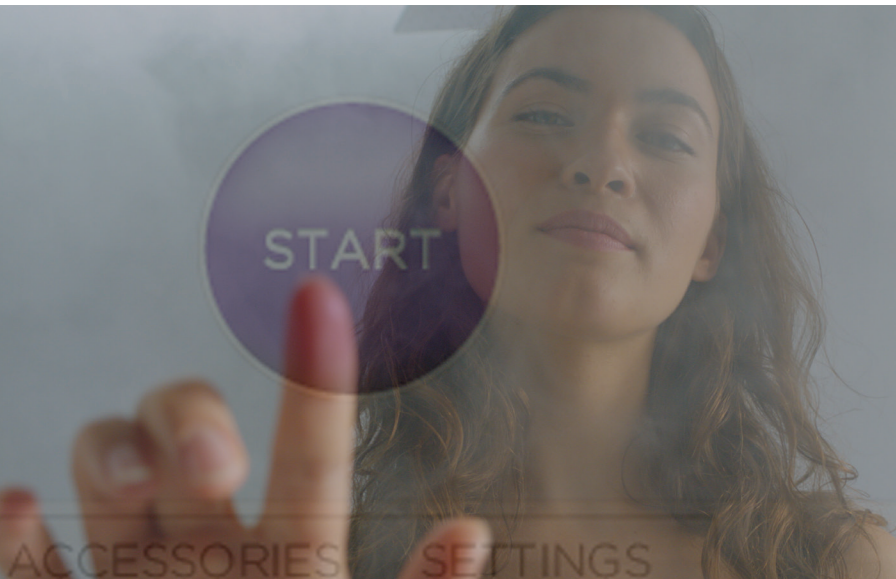
3. Generator Location

There are a number of factors that will help determine optimal generator placement. See diagram below:



For illustrative purposes only

Next Steps:



You've experienced a taste of what steamtherapy can do for you, your clients and your business.

You've immersed yourself in the feel-good ethos of MrSteam. So what's next? To learn more about the specifics, or to move on to the planning phase, we invite you to experience MrSteam in any of the following ways ...

Touch

Use our online locator to find a nearby MrSteam representative who can help you in any commercial specifications where steam showers will be a featured amenity. You'll find this easy-to-use tool at mrsteam.com/rep-locator.

Listen

Questions? Both customer service and technical representatives are available to help you by phone 11 hours a day at the following numbers ...

East Coast: 1-800-767-8326 West Coast: 1-800-727-8326

Look

If you'd like to see more resources, take advantage of the following:

www.mrsteam.com for general information about all things steam

www.mrsteam.com/downloads to download price books, warranty info, brochures and other information
blog.mrsteam.com

About MrSteam:

Leadership Team:

Mike Pinkus, President

Martha Orellana, Vice President of Marketing

Dan Reinert, Vice President of Sales

Tony DiResta, Vice President of Finance

Recent Awards:

Design Journal & Archinterious - Best Products of 2014

Innovative Bath Accessory Product of the Year - December 2014

Winner of the Architizer Product and Technology Award - 2014

2014 Award for Design Excellence [ADEX] - Spring 2014

Winner of the Good Design Award - 2014

Winner of the KB Culture Award for Excellence in Design and Technology - 2013

For a complete list of awards with links to articles, visit:
www.mrsteam.com/awards-recognitions

Contact Information:

43-20 34th Street
Long Island City, NY

9410 S. La Cienega Blvd.
Inglewood, CA 90301

800-76-STEAM
718-937-4500

800-72-STEAM
310-216-6565

www.mrsteam.com

www.mrsteam.com/downloads

to download price books, warranty info, brochures and other information