

PERMAKLEEN™ Anti-microbial Plugs and Connectors

NEMA Chart

Electrical -Ratings				Part Number				
Face Views	NEMA	Amps	Volts	Plug		Connector		
				Perma-Kleen	Competitor	Perma-Kleen	Competitor	
2-Pole, 3-Wire Grounding								
		5-15	15	125	1510-PW6P-AM	14W47	1610-CW6P-AM	15W47
		5-20	20	125	1512-PW6P-AM	14W33	1612-CW6P-AM	15W33
		6-15	15	250	1514-PW6P-AM	14W49	1614-CW6P-AM	15W49
		6-20	20	250	1516-PW6P-AM	14W48	1616-CW6P-AM	15W48
		L5-15	15	125	1520-PW6P-AM	24W47	1620-CW6P-AM	25W47
		L6-15	15	250	1522-PW6P-AM	24W49	1622-CW6P-AM	25W49
		L7-15	15	277	1524-PW6P-AM	24W34	1624-CW6P-AM	25W34
		L5-20	20	125	2310-PW6P-AM	26W47	2410-CW6P-AM	27W47
		L6-20	20	250	2312-PW6P-AM	26W48	2412-CW6P-AM	27W48
		L7-20	20	277	2314-PW6P-AM	26W49	2414-CW6P-AM	27W49
3-Pole, 3-Wire Non-Grounding								
		Non-NEMA	20	125/250	2316-PW6P-AM	26W08	2416-CW6P-AM	27W08
		Non-NEMA	20/10	250/600	2317-PW6P-AM	26W10	2417-CW6P-AM	27W10
		Non-NEMA	15/10	125V/250V	1507-PW6P-AM	14W07	1607-CW6P-AM	15W07
3-Pole, 4-Wire Grounding								
		L14-20	20	125/250	2320-PW6P-AM	26W74	2420-CW6P-AM	27W74
		L15-20	20	250, 3Ø	2322-PW6P-AM	26W75	2422-CW6P-AM	27W75
		L16-20	20	480, 3Ø	2324-PW6P-AM	26W76	2424-CW6P-AM	27W76
2-Pole, 3-Wire Grounding								
		L5-30	30	125	2510-PW6P-AM	28W47	2610-CW6P-AM	29W47
		L6-30	30	250	2512-PW6P-AM	28W48	2612-CW6P-AM	29W48
		L7-30	30	277	2514-PW6P-AM	28W49	2614-CW6P-AM	29W49
3-Pole, 3-Wire Non-Grounding								
		Non-NEMA	30	125/250	2516-PW6P-AM	28W08	2616-CW6P-AM	29W08
3-Pole, 4-Wire Grounding								
		L14-30	30	125/250, 3Ø	2520-PW6P-AM	28W74	2620-CW6P-AM	29W74
		L15-30	30	250, 3Ø	2522-PW6P-AM	28W75	2622-CW6P-AM	29W75
		L16-30	30	480, 3Ø	2524-PW6P-AM	28W76	2624-CW6P-AM	29W76
		L17-30	30	600, 3Ø	2526-PW6P-AM	28W77	2626-CW6P-AM	29W77
4-Pole, 4-Wire								
		L18-30	30	120/208, 3Ø wye	2530-PW6P-AM	28W78	2630-CW6P-AM	29W78
4-Pole, 4-Wire Non-Grounding								
		Non-NEMA	30	120/208, 3Ø wye	2528-PW6P-AM	28W09	2628-CW6P-AM	29W09

Updated 4-27-2015

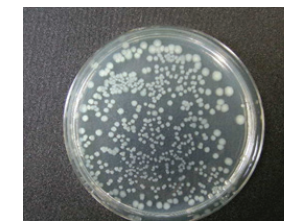
L1000688



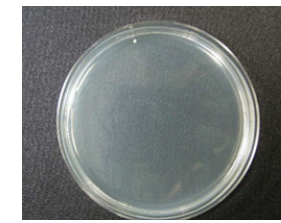
ERICSON MANUFACTURING COMPANY

4215 Hamann Parkway Willoughby, Ohio 44094 U.S.A.
Toll Free: 1-800-ERICSON (374-2766) • Phone: (440)951-8000 • Fax: (440)951-1867
E-mail: info@ericson.com • Website: www.ericson.com

PERMAKLEEN™ Anti-microbial Plugs and Connectors



Untreated
E-Coli @ 24 hours



Treated
E-Coli @ 24 hours

FEATURES:

- UL and CSA Listed
- NSF Certified
- Patent Pending
- Inhibits Growth of Bacteria, Molds, Mildews and Fungi
- Escherichia (E. Coli):
- Log Reduction > 4.8, reduces surface bacteria by > 99.99%
- Staphylococcus (Staph), MRSA:
- Log Reduction > 3.9, reduces surface bacteria by > 99.98%
- Listeria monocytogenes:
- Log Reduction > 4.3, reduces surface bacteria by > 99.99%
- Salmonella
- Log Reduction > 3.6, reduces surface bacteria by > 99.97%
- RoHS Compliant (Non-Halogenated)
- Anti-microbial Additives Embedded in Polymer
- Anti-microbial Additive Resistant to Scuffing and Cleaning
- Independently Tested and Certified
- Resistant to High Pressure Hose-down
- Tongue & Groove Environmental Sealing
- Keyed Body and Cover for Alignment
- NEMA Type 4, 4X, 6, 6P and IP67 Protection

Ericson's Perma-Kleen™ Anti-microbial Wiring Devices provide a new and innovative approach to controlling microbial growth by incorporating anti-microbial additives that remain stored in the polymer providing continual, long lasting protection. Inhibiting the growth of harmful and potentially deadly microbial contamination can finally be achieved 24/7 utilizing Ericson's revolutionary embedded anti-microbial protection.

Embedded Anti-microbial additives are resistant to high pressure hose-down and continue to inhibit the growth of bacteria, mold, mildew and fungi, even when nicked or scraped, as additional anti-microbial additives bloom to the surface. This is not a surface treatment. Micro-organism growth is inhibited, and after a short period of time, they can no longer be measured by standard laboratory equipment.

Perma-Kleen™ Anti-microbial Wiring Devices deliver exceptional protection against microbial growth even on hidden, hard to clean surfaces. Independent testing reveals the ability of these devices to inhibit the growth of Escherichia coli, Gram (-) and Staphylococcus aureus, Gram (+) delivering long lasting benefits to manufacturers beyond traditional cleaning methods.

Ideal for new or existing installations, these cost effective solutions deliver unparalleled confidence and peace of mind from knowing that every possible step has been taken to protect consumers. Perma-Kleen Anti-microbial Wiring Devices are ideal for a wide range of applications including:

- Poultry Processing
- Seafood Processing
- Meat Processing
- Pharmaceutical Processing
- Food Packaging
- Food Preparation
- Agriculture
- Beverage Processing
- Health Care

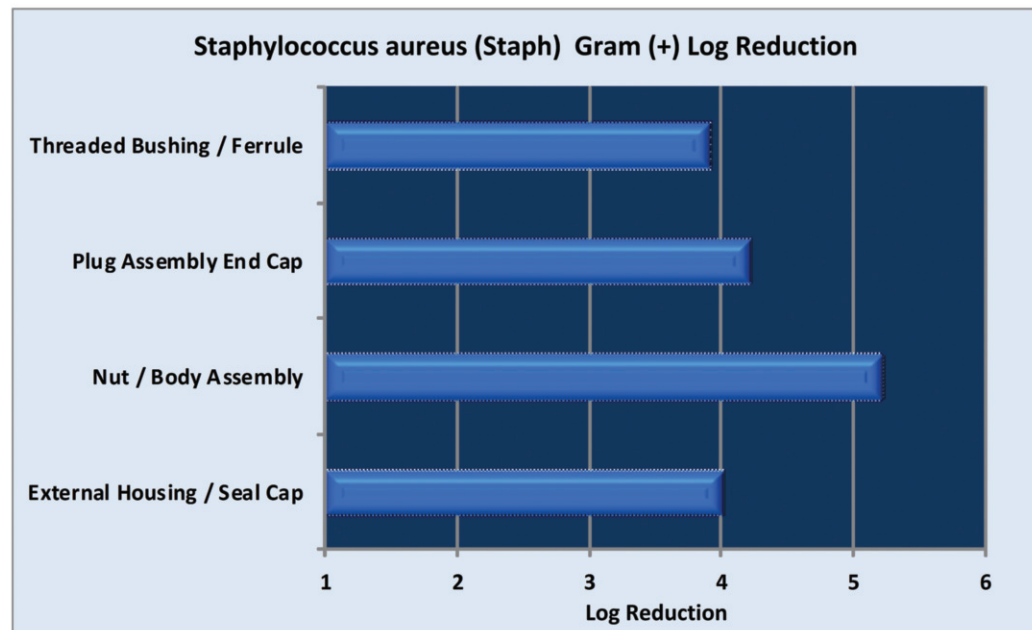
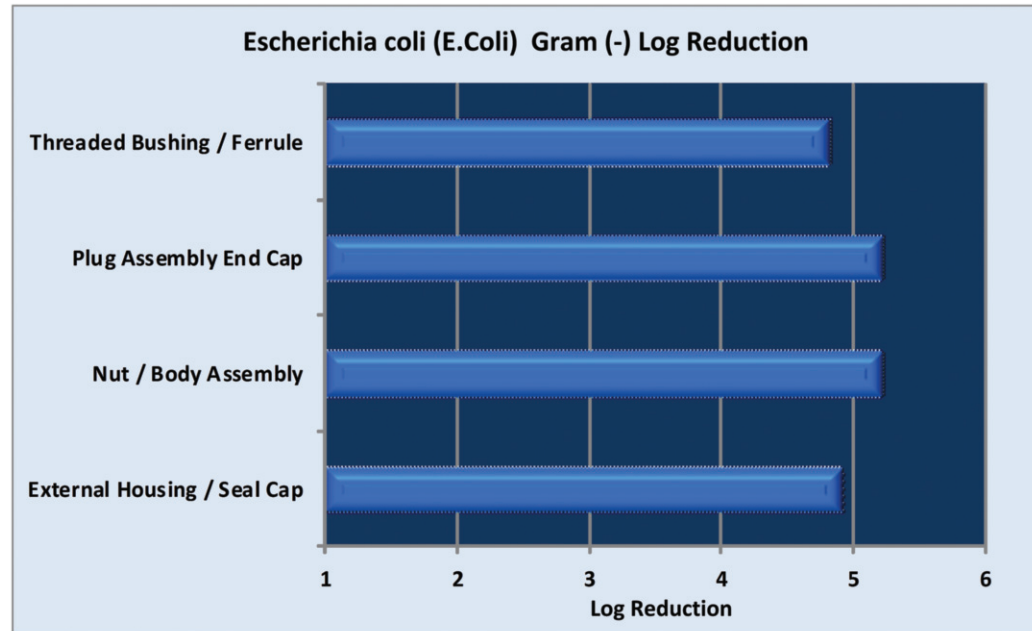


ERICSON MANUFACTURING COMPANY

4215 Hamann Parkway Willoughby, Ohio 44094 U.S.A.
Toll Free: 1-800-ERICSON (374-2766) • Phone: (440)951-8000 • Fax: (440)951-1867
E-mail: info@ericson.com • Website: www.ericson.com

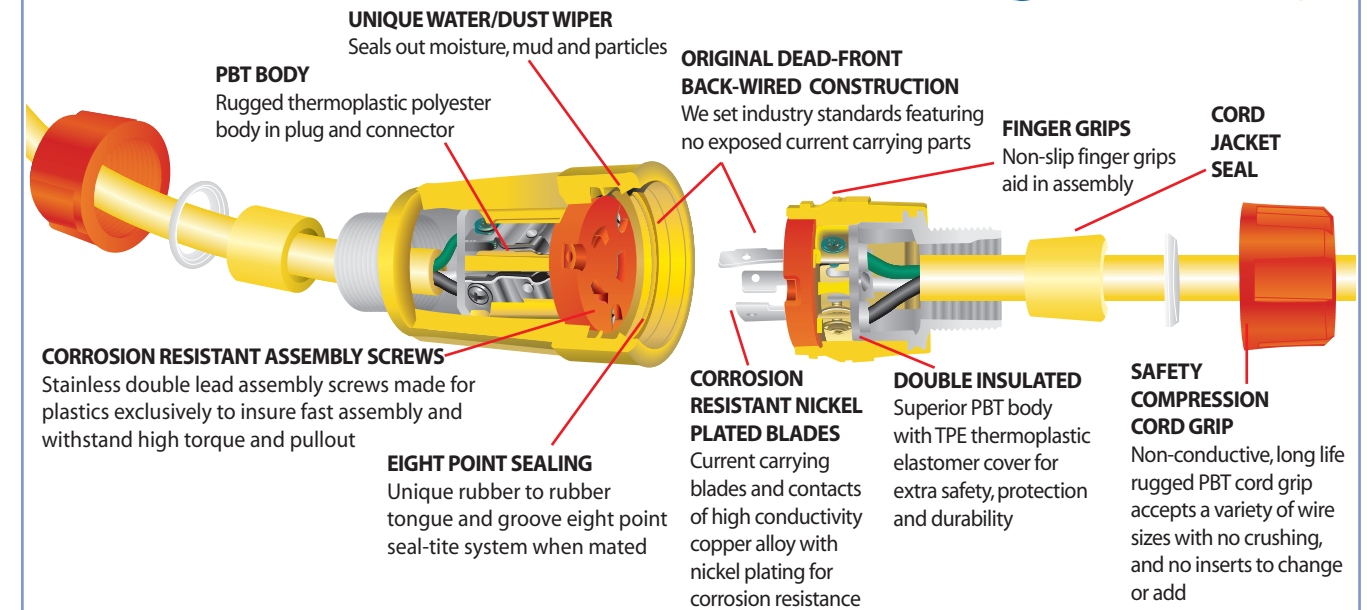
PERMAKLEEN™ Anti-microbial Plugs and Connectors

Ericson Manufacturing has utilized the industry's leading independent third party testing laboratory to quantify and validate the anti-microbial performance of the Perma-Kleen Anti-microbial Wiring Device Family.



PERMAKLEEN™ Anti-microbial Plugs and Connectors

PERMAKLEEN™



PERMAKLEEN™ Plug Cover

- Use with Ericson's Perma-Kleen™ plugs to seal out water, dust and other contaminants and to protect blades from damage when plug is not in-use
- Eight-point rubber tongue and groove sealing system provides environmental protection
- Additional protection provided by a unique internal water/dust wiper
- Easy to assemble



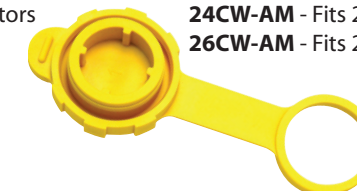
PERMAKLEEN™ Plug Cover Selection Guide

Catalog Number	Description
15PW-AM	Male closure cap, for use with 15A Straight Blade & Locking devices and 20A Straight Blade devices
16CW-AM	Female replacement cover for CW6P connectors
24CW-AM	Female Large replacement cover for CW6P connectors
26CW-AM	Female 30 Amp Large replacement cover for CW6P connectors

16CW-AM - Fits 16XXCW6P-AM Connectors



24CW-AM - Fits 24XXCW6P-AM Connectors



26CW-AM - Fits 26XXCW6P-AM Connectors

