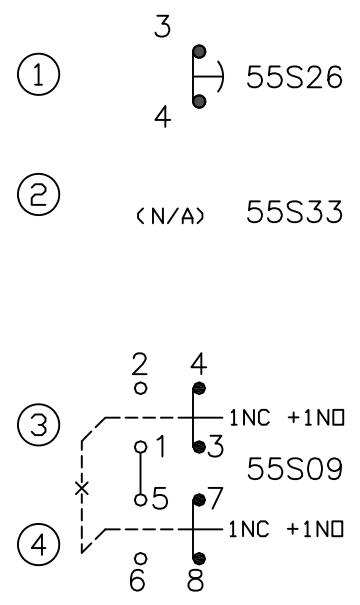
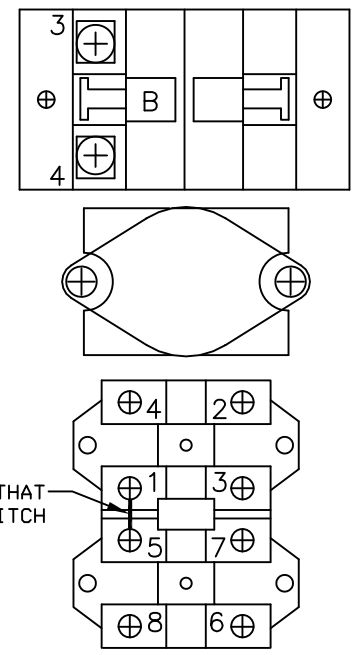


SWITCH SCHEMATIC



SWITCH ASSEMBLY VIEWED FROM BACK SIDE



NOTES:

1. SW1 ESTOP (PUSHLOCK, TWIST TO RELEASE) 1 MAINTAINED N.C. CONTACT TYPE 55S26, SW2 - N/A
2. SW3&4 ARE MECHANICALLY INTERLOCKED, 1 MOMENTARY N.C. & N.O. EACH. TYPE 55S09.
3. CONTACTS RATED 5A @ 120 OR 250VAC MAX, 2A @ 24VDC, .4A @ 120VDC.
4. YELLOW HIGH IMPACT ENCLOSURE, STANDARD CABLE ENTRY AND HOUSING DEPTH.
5. UL LISTED, NEMA4X RATED AS ASSEMBLY

REV	REVISION DESCRIPTION	DATE	BY	CHKD	ECN NO.	TOLERANCES
A	INITIAL DESIGN	12/09/19	FWK			FRAC. ± 1/64 .X ± .015 .XX ± .010 .XXX ± .005 ANGLES ± 1° UNLESS OTHERWISE SPECIFIED DO NOT SCALE B SIZE

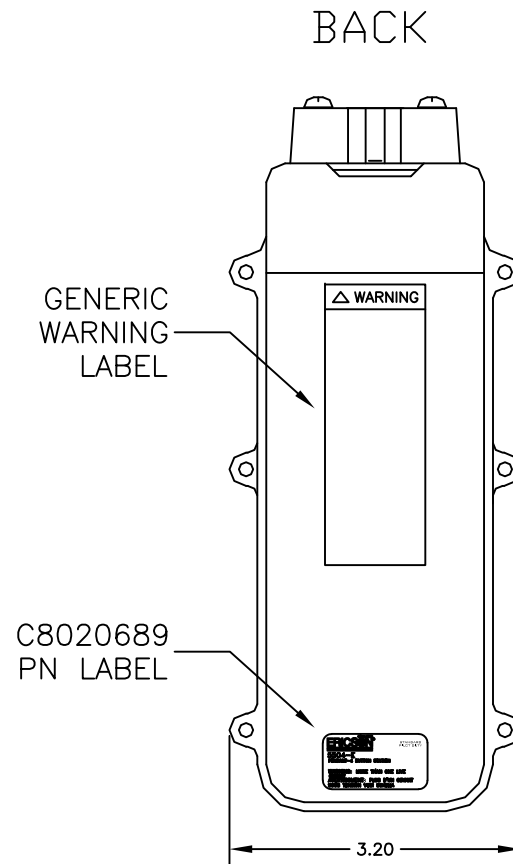
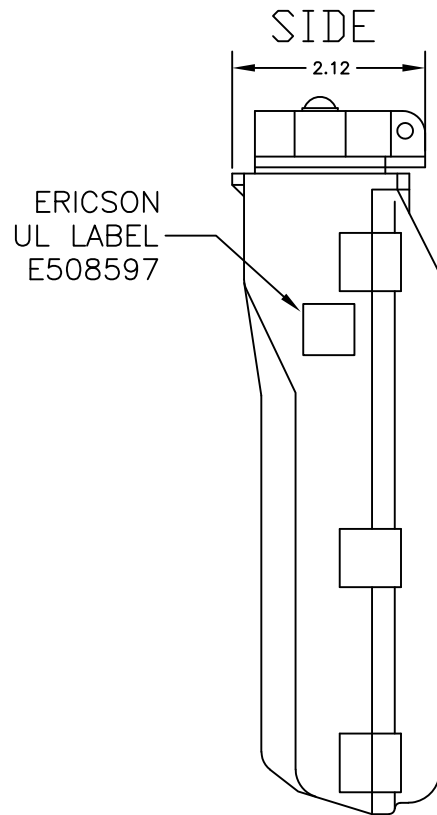
DWG. APPROVALS	DATE	REV.

DRAWN FWK 12/09/19
 CHK'D _____

DWG. TITLE		
5500 SERIES PENDANTS		
4 POSITION PENDANT WITH E-STOP		
3NC & 2NO CONTACTS		
SCALE	PROJ NO.	SHEET 1 OF 2
NTS	--/--	
DWG. UNIT NO.		REV
5504-E		A

NOTES:

1. SHIPPED WITH POLYBAG CONTAINING RING CRIMP TERMINALS AND LS1 BUTTON LEGEND SHEET
2. SHIPPED WITH C8020398B INSTALLATION & OPERATION MANUAL.
3. SHIPPED WITH 2 PIECE BUSHING KIT 55CG2
4. C1010231 MAIN PENDANT UNIT.
5. POLYBAGGED WITH C8020444 LABEL.



REV	REVISION DESCRIPTION	DATE	BY	CHKD	ECN NO.

TOLERANCES		
FRAC.	± 1/64	
.X	± .015	
.XX	± .010	
.XXX	± .005	
ANGLES ± 1°		
UNLESS OTHERWISE SPECIFIED		
DO NOT SCALE		
B SIZE		

DWG. APPROVALS	DATE	REV.

DRAWN	FWK	12/9/19
CHK'D		

ERICSON
SAFETY IS OUR STANDARD

ERICSON MANUFACTURING COMPANY
1-800-ERICSON • www.ericson.com

DWG. TITLE		
5500 SERIES PENDANTS		
4 POSITION PENDANT WITH E-STOP		
3NC & 2NO CONTACTS		
SCALE	PROJ NO.	SHEET 2 OF 2
NTS	--/--	
DWG. UNIT NO.		REV
5504-E		A