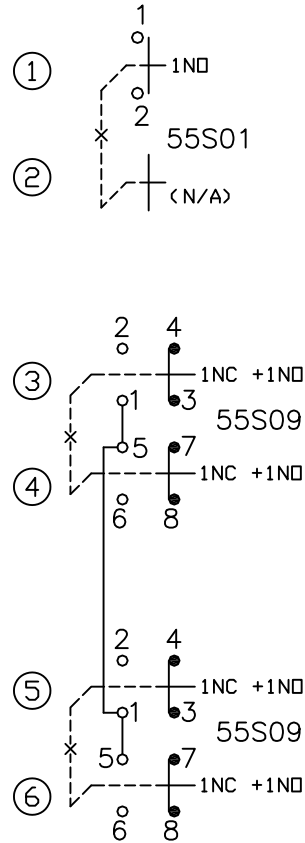
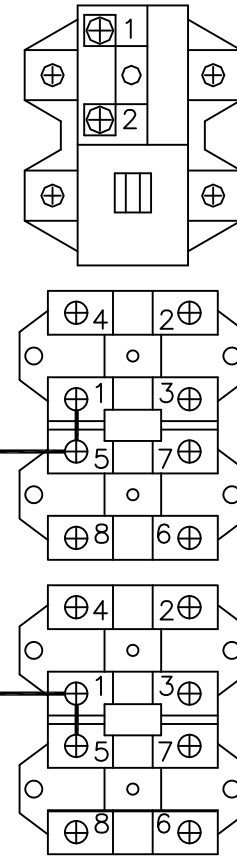


SWITCH SCHEMATIC



SWITCH ASSEMBLY VIEWED FROM BACK SIDE



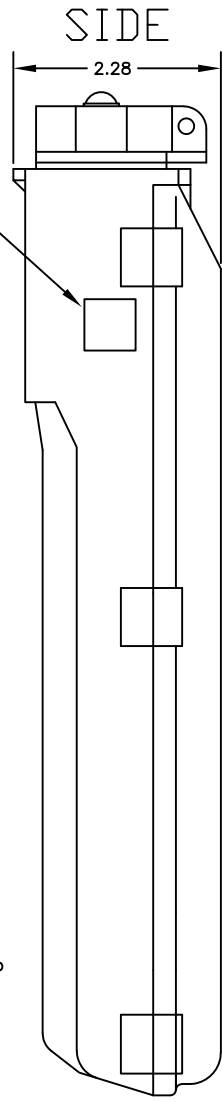
NOTES:

1. SW1&SW2 ARE MECHANICALLY INTERLOCKED. 1 MAINTAINED N.O. CONTACT SW1, MOMENTARY SW2, TYPE 55S01.
2. SW3&SW4, SW5&SW6 ARE MECHANICALLY INTERLOCKED. 1 SINGLE SPEED MOMENTARY N.O.&N.C. CONTACT EACH. TYPE 55S09.
3. CONTACTS RATED 5A @ 120 DR 250VAC MAX, 2A @ 24VDC, .4A @ 120VDC.
4. YELLOW HIGH IMPACT ENCLOSURE, STANDARD CABLE ENTRY AND HOUSING DEPTH.
5. UL LISTED, NEMA4X RATED AS ASSEMBLY

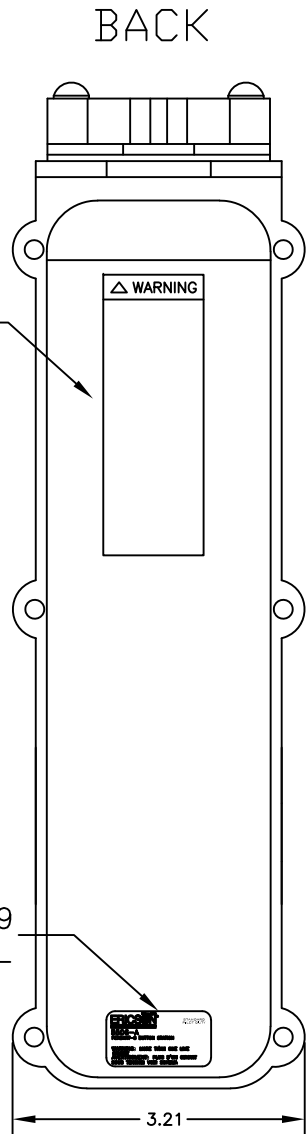
REV	REVISION DESCRIPTION	DATE	BY	CHKD	ECN NO.
A	INITIAL DESIGN	12/9/19	FWK		

TOLERANCES			DWG. APPROVALS			DATE REV.		
FRAC.	± 1/64							
X	± .015							
.XX	± .010							
.XXX	± .005							
ANGLES ± 1°			DRAWN FWK			12/9/19		
UNLESS OTHERWISE SPECIFIED			CHK'D					
DO NOT SCALE								
B SIZE								

DWG. TITLE		
5500 SERIES PENDANTS 6 POSITION PENDANT 5NO & 4NC CONTACTS		
SCALE NTS	PROJ NO. --/--	SHEET 1 OF 2
DWG. UNIT NO.		REV
5506-A		A



ERICSON
 UL LABEL
 E508597



GENERIC
 WARNING
 LABEL

C8020689
 PN LABEL

- NOTES:**
1. SHIPPED WITH POLYBAG CONTAINING RING CRIMP TERMINALS AND LS1 BUTTON LEGEND SHEET
 2. SHIPPED WITH C8020398B INSTALLATION & OPERATION MANUAL.
 3. SHIPPED WITH 2 PIECE BUSHING KIT 55CG3
 4. C1010232 MAIN PENDANT UNIT.
 5. POLYBAGGED WITH C8020444 LABEL.

REV	REVISION DESCRIPTION	DATE	BY	CHKD	ECN NO.

TOLERANCES
 FRAC. ± 1/64
 .X ± .015
 .XX ± .010
 .XXX ± .005
 ANGLES ± 1°
 UNLESS OTHERWISE SPECIFIED
DO NOT SCALE
 B SIZE

DWG. APPROVALS DATE REV.
 _____ _____ _____
 _____ _____ _____
 _____ _____ _____
 DRAWN FWK 12/9/19
 CHK'D _____

ERICSON
 SAFETY IS OUR STANDARD
 ERICSON MANUFACTURING COMPANY
 1-800-ERICSON • www.ericson.com

DWG. TITLE		
5500 SERIES PENDANTS 6 POSITION PENDANT 5NO & 4NC CONTACTS		
SCALE NTS	PROJ NO. --/--	SHEET 2 OF 2
DWG. UNIT NO. 5506-A		REV A