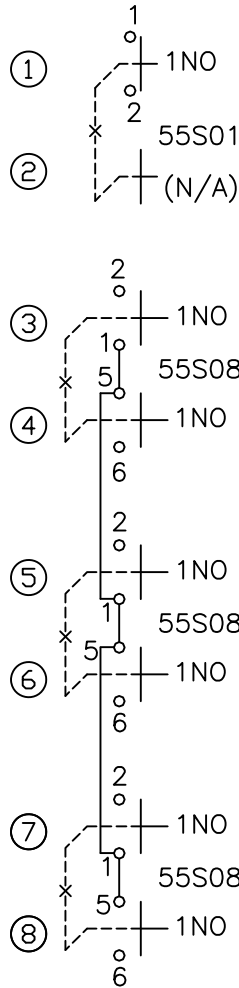
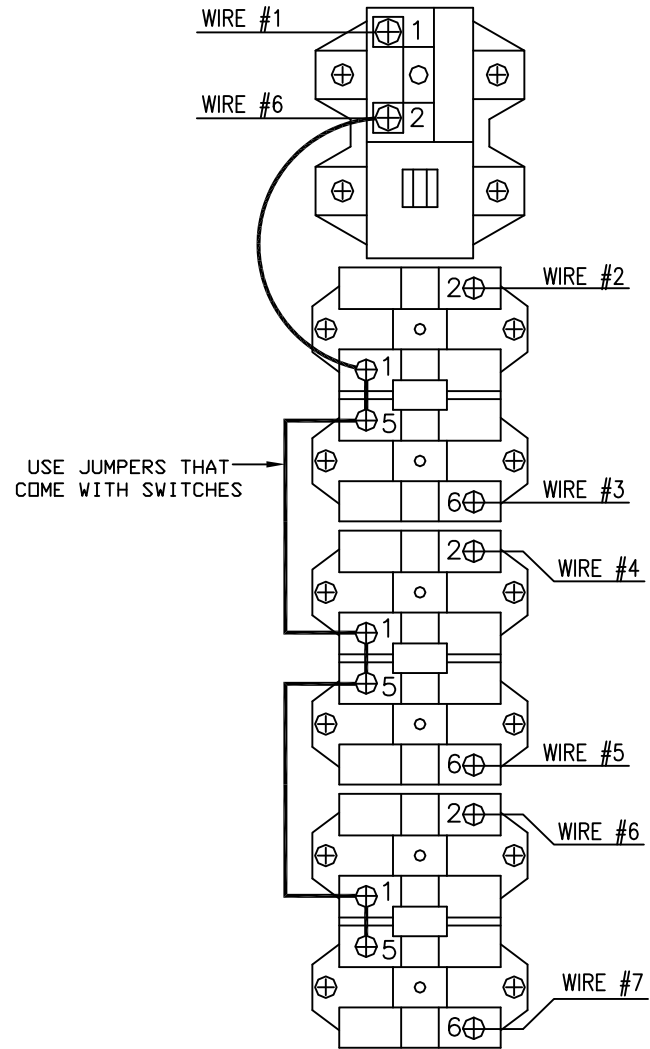


**SWITCH SCHEMATIC**



**SWITCH ASSEMBLY VIEWED FROM BACK SIDE**



**NOTES:**

- 1. SW1&SW2 ARE MECHANICALLY INTERLOCKED. 1 MAINTAINED N.O. CONTACT SW1, MOMENTARY SW2, TYPE 55S01.
- 2. SW3&SW4, SW5&6, SW7&8 ARE MECHANICALLY INTERLOCKED. 1 SINGLE SPEED MOMENTARY N.O. CONTACT EACH. TYPE 55S08.
- 3. CONTACTS RATED 5A @ 120 OR 250VAC MAX, 2A @ 24VDC, .4A @ 120VDC.
- 4. YELLOW HIGH IMPACT ENCLDSURE, STANDARD CABLE ENTRY AND HOUSING DEPTH.
- 5. UL LISTED, NEMA4X RATED AS ASSEMBLY

REV	REVISION DESCRIPTION	DATE	BY	CHKD	ECN NO.
A	INITIAL DESIGN	12/2/19	FWK		

TOLERANCES	
FRAC.	± 1/64
.X	± .015
.XX	± .010
.XXX	± .005
ANGLES ± 1°	
UNLESS OTHERWISE SPECIFIED	
DO NOT SCALE	
B SIZE	

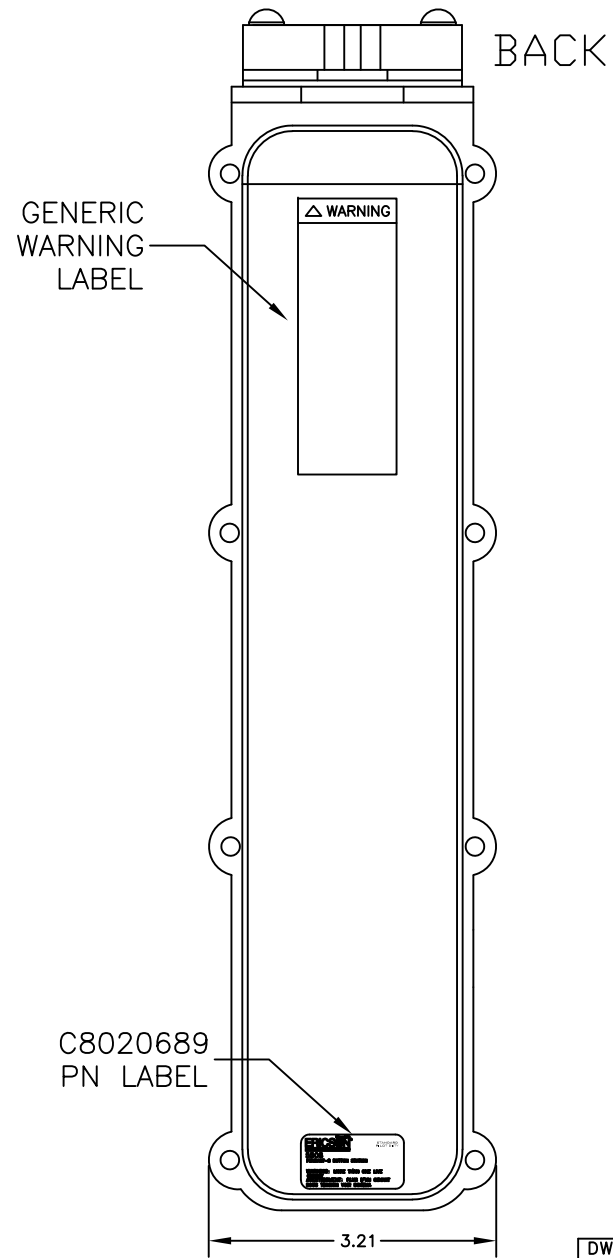
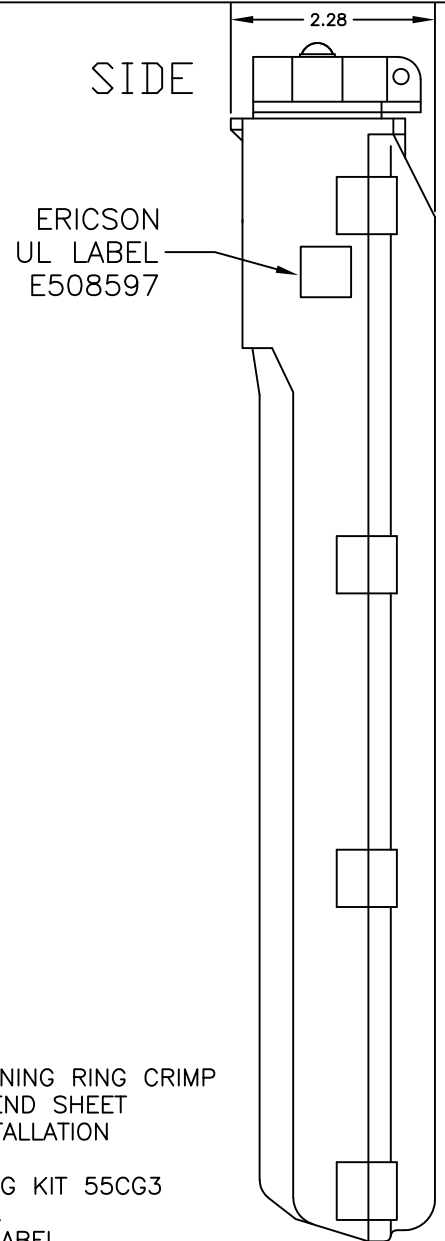
DWG. APPROVALS	DATE	REV.
_____	_____	_____
_____	_____	_____
_____	_____	_____

DRAWN FWK 12/2/19  
CHK'D \_\_\_\_\_

**ERICSON**  
SAFETY IS OUR STANDARD

ERICSON MANUFACTURING COMPANY  
1-800-ERICSON • www.ericson.com

DWG. TITLE		
5500 SERIES PENDANTS 8 POSITION PENDANT		
SCALE	PROJ NO.	SHEET 1 OF 2
NTS	--/--	
DWG. UNIT NO.		REV
5508		A



- NOTES:**
1. SHIPPED WITH POLYBAG CONTAINING RING CRIMP TERMINALS AND LS1 BUTTON LEGEND SHEET
  2. SHIPPED WITH C8020398B INSTALLATION & OPERATION MANUAL.
  3. SHIPPED WITH 2 PIECE BUSHING KIT 55CG3
  4. C1010008 MAIN PENDANT UNIT.
  5. POLYBAGGED WITH C8020444 LABEL.

REV	REVISION DESCRIPTION	DATE	BY	CHKD	ECN NO.

**TOLERANCES**  
 FRAC. ± 1/64  
 .X ± .015  
 .XX ± .010  
 .XXX ± .005  
 ANGLES ± 1°  
UNLESS OTHERWISE SPECIFIED  
**DO NOT SCALE**  
 B SIZE

DWG. APPROVALS      DATE      REV.  
 \_\_\_\_\_                      \_\_\_\_\_      \_\_\_\_\_  
 \_\_\_\_\_                      \_\_\_\_\_      \_\_\_\_\_  
 DRAWN FWK                      12/2/19  
 CHK'D \_\_\_\_\_



DWG. TITLE		
5500 SERIES PENDANTS 8 POSITION PENDANT		
SCALE NTS	PROJ NO. --/--	SHEET 2 OF 2
DWG. UNIT NO.		REV
5508		A