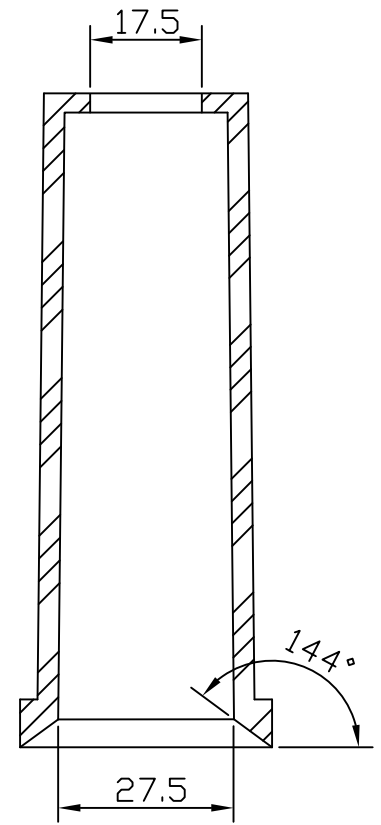


CABLE BUSHING



CROSS SECTION VIEW A-A

- NOTES:**
1. ALL DIMENSIONS ARE IN METRIC (mm)
 2. DRAWING NOT FOR MANUFACTURE
 3. MATERIAL USED: RUBBER NBR
 4. METRIC TOLERANCES
 .X = ±1.524 mm
 .XX = ±.762 mm
 .XXX = ±.254 mm
 5. BUSHING AND GLANDS KITTED IN POLYBAG, P/N ON BAG
 6. FOR ENCLOSURES WITH LARGE CABLE ENTRY

REV	REVISION DESCRIPTION	DATE	BY	CHKD	ECN NO.
A	INITIAL DESIGN	11/11/19	FWK		

TOLERANCES
FRAC. ± 1/64
.X ± .015
.XX ± .010
.XXX ± .005
ANGLES ± 1°
UNLESS OTHERWISE SPECIFIED
DO NOT SCALE
B SIZE

DWG. APPROVALS	DATE	REV.

DRAWN FWK 11/11/19
 CHK'D

ERICSON
 SAFETY IS OUR STANDARD

ERICSON MANUFACTURING COMPANY
 1-800-ERICSON • www.ericson.com

DWG. TITLE		
5500 SERIES PENDANTS CABLE BUSHING AND GLANDS 19.3 - 22.5 mm		
SCALE NTS	PROJ NO. --/--	SHEET 1 OF 1
DWG. UNIT NO. 55CG5		REV A