

BATH RUGBY AND  
BATH RUGBY FOUNDATION



# SCHOOLS PARTNERSHIP PROGRAMME



## MAP

This map highlights the areas that will be supported by a regional coordinator.

- Bath and North East Somerset (BANES)
- Somerset
- Dorset
- North Wiltshire
- South Wiltshire





# OUR VISION

Bath Rugby is committed to using the power of our sport to motivate, educate and inspire all individuals within our community. We believe that by delivering high quality and accessible opportunities, we can inspire the next generation of rugby players and supporters.

After the launch of the first Schools Partnership Programme last year, Bath Rugby is now delighted to be working with over 50 schools across Somerset, Dorset, and Wiltshire. Joining forces with Bath Rugby Foundation, the charitable arm of the club, together we will create a series of tailored programmes. These will be designed to reflect the respective environments of those throughout the catchment area whilst incorporating rugby and character development.



# REGIONAL APPROACH

At Bath Rugby we recognise the importance of schools in our catchment area and we want to be able to support all our school partners with every need they may have.

Starting in the new academic year, Bath Rugby will have a designated contact in your area that will be your point of contact. This person will work with all Schools and Grassroots Rugby Clubs in your region, delivering all your coaching hours and will support you throughout the academic year.

# ABOUT US

Bath Rugby and Bath Rugby Foundation are delighted to be collaborating this academic year to create the most comprehensive sports and wellbeing programme across Somerset, Wiltshire, and Dorset. The team at Bath Rugby will be focused on developing your students on the pitch, as well as creating unique training and matchday experiences, whilst the fantastic team at Bath Rugby Foundation will be focused on developing your students' character away from the pitch.

Founded in 1865, Bath Rugby is one of the oldest rugby union clubs in existence. Located in the heart of the World Heritage City of Bath, we are a club steeped in vibrant history and heritage. Our supporters and community are central to the club's existence.



“

*Bath Rugby has always understood both the power and the responsibility we hold to make a difference to children in our community. Our Grassroots team are not only dedicated to raising awareness of rugby, but also stressing the importance of health and fitness at an early age.*

TARQUIN MCDONALD - CHIEF EXECUTIVE

”

“

*These packages will provide value through the power of sport and develop long-term, sustainable links with all schools. School sport is the beginning of all players' journeys into rugby and it's vital we are helping facilitate first-class, enjoyable experiences.*

STUART HOOPER - GENERAL MANAGER

”





# ABOUT US: BATH RUGBY FOUNDATION

Since 2003 the charity Bath Rugby Foundation has provided opportunities for children and young people to build confidence, develop life skills and create pathways to independence. We're a charity that helps young people who need all kinds of emotional, practical and physical support - but don't get it.

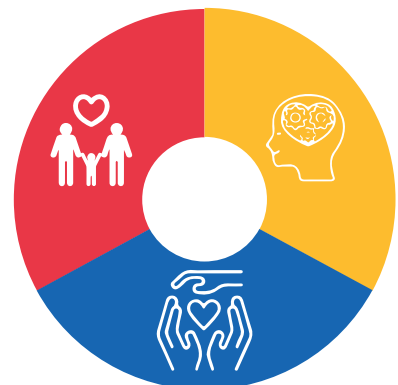
Every year we change the lives of thousands of young people by being active in their communities, schools or at our home at the Rec. We put our hearts and souls into helping any challenged young person stop feeling judged, crushed or underestimated and start feeling self-assured, hopeful and happy. We work with upwards of 3,500 young people annually combining education, sport, health and wellbeing to re-ignite their confidence and self-worth and give them the life skills and opportunities to not only survive but to thrive in the world. We work with children aged 5 to 19 (up to age 25 with special needs) and we hold the opinion that 'every child deserves an equal opportunity to reach their full potential'.

*We believe developing all children and young people creates stronger communities  
and stronger communities are better for everyone.*

Our work in primary schools, secondary schools, colleges, and at our own alternative learning hub supports students to develop a growth mindset, become fitter both mentally and physically, be challenged in a non-threatening environment, acquire life skills and gain qualifications for a successful reintegration into the classroom, further education, apprenticeships, or work. Below is our approach to delivery across our catchment area of B&NES and Wiltshire.

## Character development and alternative learning focus

- Growth mindset
- Mental wellbeing and emotional regulation
- Sports leadership
- Special educational needs and/or disabilities (SEND)
- Aspiration and life skills development such as cooking, finance, project management, event organisation or setting up a social enterprise.
- Alternative education



“

*These packages give the opportunity for all children to succeed, build confidence, develop life skills, and become independent. Our specialist staff create safe environments for children and young people to thrive. Through working in partnership with schools we can ensure no child slips through the net.*

LYNNE FERNQUEST - CHIEF EXECUTIVE OFFICER

”



# CONTENTS

01   MATRIX OF PACKAGES	8
02   PACKAGE DETAILS	10 - 19
03   VALUES	20
04   WORK IN THE COMMUNITY	22 - 23
05   MINIMUM STANDARDS AND SAFEGUARDING	24
06   PREMIERSHIP RUGBY CHAMPIONS	26



# MATRIX OF PACKAGES

Each school is able to purchase these packages individually or combine based on your preference. When completing the enquiry form, you will be able to stipulate which packages you are interested in.

	BLUE	BLACK	WHITE	ENGAGE	TACKLE	BOOST
	Rugby	Rugby	Rugby	Character development	Character development	Character development
<b>Cost</b>	£ 750	£ 1,750	£ 2,750	£ 1000	£ 3,950	Variable
<b>Hours of rugby coaching/practical intervention</b>	15 hours	20 hours	25 hours	10 hours	31.5 hours	Variable dependant on pupils' needs
<b>Hours of female coaching</b>			10 hours of additional girls coaching			
<b>Matchday tickets and experiences</b>		25 child (U16s) complimentary tickets + NextGen experience	50 child (U16s) complimentary tickets + NextGen experience			
<b>Celebration Event at The Rec</b>				Wellbeing Festival	The Final Challenge	Jobs in sport employability day
<b>Rugby roadshow</b>	X	X	X			
<b>Summer Scrum (Inclusive Rugby Festival)</b>				12 participants	24 participants	36 participants
<b>Coach education</b>	Access to Digital Hub	Access to Digital Hub & 1x CPD event	Access to Digital Hub & 1x CPD event	Access to Digital Hub	Access to Digital Hub	Access to Digital Hub
<b>Coaching session at Bath Rugby's first team training facility</b>			X			
<b>Opportunity to run a Bath Rugby festival or residential at your school</b>			X			
<b>Added to school partner collateral</b>	X	X	X	X	X	X
<b>Marketing support</b>			X			
<b>Access to funded partner programmes</b>	X	X	X	X	X	X







## BLUE £750

### Logo of school (incl. link)

Your school logo will be posted on Bath Rugby's website and social media including link through to school website, and opportunity to use the Bath Rugby logo across your school website and social media. Your school will feature on our Affiliate Clubs and School Partners' plaque that will be displayed in the players' tunnel at the Rec.



### High quality coaching sessions within your school

Bath Rugby will provide **10 hours** of tailored rugby / tag coaching sessions and 5 hours of an extracurricular club (lunchtime or afterschool) to be delivered across the academic year (choice of which term).

### Roadshow

Bath Rugby will run a one-off, all-inclusive roadshow including three coaches and giveaways.

### Continuing Professional Development (CPD) Access

Enabling your teachers to gain full access to our affiliate portal, which hosts a variety of resources and content to support with your teaching of rugby and PE.

### Exclusive access

Bath Rugby offers your school the opportunity to access free coaching through funded partner programmes. This includes access to the Premiership Rugby Champions app which hosts a variety of lesson plans for you to bring rugby into the classroom.



# BLACK £1,750

## **Logo of school (incl. link)**

Your school logo will be posted on Bath Rugby's website and social media, including link through to school website, and opportunity to use the Bath Rugby logo across your school website and social media. Your school will feature on our Affiliate Clubs and School Partners plaque that will be displayed in the players' tunnel at the Rec.

## **High quality coaching sessions within your school**

Bath Rugby will provide 15 hours of tailored rugby/ tag coaching and 5 hours of an extracurricular club (lunchtime or afterschool) will be delivered across the academic year (choice of which term).

## **Roadshow**

Bath Rugby Grassroots will run a one-off inclusive roadshow including three coaches plus giveaways.

## **Continuing Professional Development (CPD) Access**

Enabling your teachers to gain full access to our affiliate portal which hosts a variety of resources and content to support with your teaching of rugby and PE. Bath Rugby will also host a one-off CPD event at school for all teachers, which can take place on the same day as the roadshow.

## **Matchday experience**

An exclusive experience at the home of Bath Rugby, including a half time pitch parade for all pupils attending, up to 25 junior tickets (under 16 years) for a home fixture at the Rec. The school will also have access to purchase up to 25 additional adult tickets (16 years and over) at a discounted price.

## **Exclusive access**

Bath Rugby offers your school the opportunity to access free coaching through funded partner programmes. This includes access to the Premiership Rugby Champions App which hosts a variety of lesson plans for you to bring rugby into the classroom.



# WHITE £2,750



## **Logo of school (incl. link)**

Your school logo will be posted on Bath Rugby's website and social media including link through to school website, and opportunity to use the Bath Rugby logo across your school website and social media. Your School will feature on our Affiliate Clubs and School Partners plaque that will be displayed in the players' tunnel at the Rec.

## **High quality coaching sessions within your school**

Bath Rugby Grassroots to provide 20 hours of tailored rugby/ tag coaching and 5 hours of an extracurricular club (lunchtime or afterschool) will be delivered across the academic year (choice of which term).

## **Girls Rugby**

Bath Rugby will provide 10 hours of girls-specific rugby sessions with the aim to increase participation and engagement within the sport.

## **Roadshow**

Bath Rugby Grassroots will run a one-off inclusive roadshow hosted by 3 Bath Rugby coaches. This roadshow can be used by the school to showcase your facilities.

## **Continuing Professional Development (CPD) Access**

Enabling your teachers to gain full access to our affiliate portal which hosts a variety of resources and content to support with your teaching of rugby and PE. Bath Rugby will also host a one-off CPD event at school for all teachers, which can take place on the same day as the roadshow.

## **Matchday experience**

An exclusive experience at the home of Bath Rugby, including a half time pitch parade for all pupils attending, up to 50 junior tickets (under 16 years) for a home fixture at the Rec. The school will also have access to purchase up to 50 additional adult tickets (16 years and over) at a discounted price.



### **Opportunity to host a school rugby festival or residential at school**

Hosting a rugby festival at school? Bath Rugby will support this event with coaches and any necessary promotional requirements. Are you a boarding school? If so, as a school partner, you will have the opportunity to open your doors to one of Bath Rugby's world-class residential camps. Existing school partners such as Marlborough College and Clayesmore School run these camps, providing the school with a commercial opportunity as well as identifying new rugby talent.

### **Coaching session at Bath Rugby's first-team training facility**

A rare opportunity to watch the first-team train, receive a coaching session and a tour of our elite facilities.

### **Exclusive access**

Bath Rugby offers your school the opportunity to access free coaching through funded partner programmes. This includes access to the Premiership Rugby Champions App which hosts a variety of lesson plans for you to bring rugby into the classroom!

### **Marketing opportunity**

Bath Rugby will give you access to marketing and brand assets that can be used to promote the partnership and specific joint events. Partner schools will also be offered an opportunity to speak to the club's Marketing and Communications team should there be any questions or queries around amplification of this partnership.







## ENGAGE £1,000 \*

### **Logo of school (incl. link)**

Your school logo will be posted on Bath Rugby's and Bath Rugby Foundation's websites and social media including link through to school website, and opportunity to use the Bath Rugby and Bath Rugby Foundation logo across your school website and social media. Your school will feature on our Affiliate Clubs and School Partners' plaque that will be displayed in the player's tunnel at the Rec.

### **Whole Class Intervention at school**

High quality sessions for the whole class, focussing on people development. Bath Rugby Foundation to provide two coaches for 10 hours of facilitated learning opportunities tailored to schools' focus from the following list: growth mindset, mental wellbeing, social and emotional regulation, sports leadership, inclusive sport for young people with special educational needs and/or disabilities (SEND). To be delivered across the academic year (choice of which term).

### **Intervention Celebration Event**

Whole class invited to Bath Rugby Foundation's Schools Partnership wellbeing festival held at the Rec and meet inspirational local sporting role models.

### **Summer Scrum**

An inclusive and inspiring rugby festival for up to 12 pupils with SEND or additional vulnerabilities, smashing perceptions and raising aspirations.

### **Continuing Professional Development (CPD) Access**

Enabling your teachers to gain full access to our affiliate portal which hosts a variety of resources and content to support with your teaching of rugby and PE.

### **Exclusive access**

Bath Rugby and Bath Rugby Foundation offers your school the opportunity to access free coaching through funded partner programmes.



*\* Available in B&NES and Wiltshire*



# TACKLE £3,950 \*

## Logo of school (incl. link)

Your school logo will be posted on Bath Rugby's and Bath Rugby Foundation's websites and social media including link through to school website, and opportunity to use the Bath Rugby and Bath Rugby Foundation logo across your school website and social media. Your school will feature on our Affiliate Clubs and School Partners plaque that will be displayed in the player's tunnel at the Rec.



## Targeted Group Intervention at school

High quality coaching within your school for 8-12 selected pupils at risk of exclusion, or in need of additional small group support. Bath Rugby Foundation to provide 31.5 hours (1.45 hour sessions) of facilitated learning opportunities tailored to schools' focus from the following list: growth mindset, mental wellbeing, social and emotional regulation, sports leadership, inclusive sport for young people with special educational needs and/or disabilities (SEND). To be delivered across the academic year within a choice of two terms. Monitoring and evaluation reporting provided on completion of programme and pupil support for sign posting for extracurricular / additional services.



## Intervention Celebration Event

The Final Challenge - A challenge set to provide space for the pupils to represent their school and practise their learnt skills under pressure within a managed external environment with external variables. Group invited to The Final Challenge based at the Rec.

## Summer Scrum

An inclusive and inspiring rugby festival for up to 24 pupils with SEND or additional vulnerabilities, smashing perceptions and raising aspirations.

*\* Available in B&NES and Wiltshire*



### Continuing Professional Development (CPD) Access

Enabling your teachers to gain full access to our affiliate portal which hosts a variety of resources and content to support with your teaching of rugby and PE.

### Exclusive access

Bath Rugby and Bath Rugby Foundation offers your school the opportunity to access free coaching through funded partner programmes.

### Added value, did you know after taking part in BRF interventions....



Schools noted a **27% reduction** in reported behaviour incidence from students taking part in the BRF Tackle intervention.

Secondary schools noted a reduction in exclusion by a third in the 21-22 academic year.



Primary schools reported cohorts going from below average school attendance to above average school attendance whilst receiving a BRF intervention and going on to catch up their peers in Maths and English.



# BOOST \*

## Logo of school (incl. link)

Your school logo will be posted on Bath Rugby's and Bath Rugby Foundation's websites and social media including link through to school website, and opportunity to use the Bath Rugby and Bath Rugby Foundation logo across your school website and social media. Your school will feature on our Affiliate Clubs and School Partners plaque that will be displayed in the player's tunnel at the Rec.

## Summer Scrum

An inclusive and inspiring rugby festival for up to 36 pupils with SEND or additional vulnerabilities, smashing perceptions and raising aspirations.

## Continuing Professional Development (CPD) Access

Enabling your teachers to gain full access to our affiliate portal which hosts a variety of resources and content to support with your teaching of rugby and PE.

## Exclusive access

Bath Rugby and Bath Rugby Foundation offer your school the opportunity to access free coaching through funded partner programmes.

## Bath Rugby Foundation's 'Be Inspired' - Jobs in sport employability day

Bath Rugby Foundation will host a celebration event for all year 9 pupils to showcase local talent and jobs within the sporting industry and raise awareness of career opportunities through sport e.g. coaching, physiotherapy, strength and conditioning, media and marketing, journalism, commentating, catering, finance, event management and hospitality. Opportunities to meet guest speakers, inspirational staff from Premiership rugby clubs and networking opportunities for work experience.



Please contact us for further information and to design a tailored programme for the young person



#### **Targeted intervention for a pupil aged 14-16 off site**

High quality tutoring and mentoring programme off site from school for a pupil disengaged with education or requiring an alternative learning environment. Pupils are referred by schools, this course is aimed at young people who through no fault of their own have experienced life trauma, face a mild learning need or who have not yet developed the social emotional skills critical to engaging with a highly pressurised school system.

Through the partnership we will work closely with the school to support in helping them to progress and re-engage with the mainstream system. We'll provide regular monitoring and intervention discussions with the school and monitoring and evaluation reports.

The programme will support pupils with sign posting, work experience opportunities and increasing their network of positive role models.

#### **Added value, did you know from attending BRF alternative learning hub....**

**96%** of students were enrolled when disengaged with education completed the course and gained a positive next step in education, employment or training.

#### **Added value, did you know from attending BRF alternative learning hub....**

**84%** of students reported an increase in life skills on completion of the course in focus, discipline, confidence, aspiration and resilience





**Bath Rugby and Bath Rugby Foundation are committed to delivering the core values of English Rugby through the Schools Partnership Programme:**



**Teamwork**

Teamwork is essential to our sport. We welcome all new team members and include all because working as a team enriches our lives. We play selflessly: working for the team, not for ourselves alone, both on and off the field. We take pride in our team, rely on one another, and understand that each player has a part to play. We speak out if our team or sport is threatened by inappropriate words or actions.



**Respect**

Mutual respect forms the basis of our sport. We hold in high esteem our sport, its values and traditions and earn the respect of others in the way we behave. We respect our match officials and accept their decisions. We respect opposition players and supporters. We value our coaches and those who run our clubs and treat clubhouses with consideration.



**Enjoyment**

Enjoyment is the reason we play and support rugby union. We encourage players to enjoy training and playing. We use our sport to adopt a healthy lifestyle and build life skills. We safeguard our young players and help them have fun. We enjoy being part of a team and part of the rugby family.



**Discipline**

Strong discipline underpins our sport. We ensure that our sport is one of controlled physical endeavour and that we are honest and fair. We obey the laws of the game which ensure an inclusive and exciting global sport. We support our disciplinary system, which protects our sport and upholds its values. We observe the sport's laws and regulations and report serious breaches.



**Sportsmanship**

Sportsmanship is the foundation upon which rugby union is built. We uphold the rugby tradition of camaraderie with teammates and opposition. We observe fair play both on and off the pitch and are generous in victory and dignified in defeat. We play to win but not at all costs and recognise both endeavour and achievement. We ensure that the wellbeing and development of individual players is central to all rugby activity.





# WORK IN THE COMMUNITY

Our core objective is to motivate, educate and inspire all individuals within our community, using the power of our sport. We deliver programmes across all age groups and abilities, ensuring that people have every opportunity to engage with the sport we love.

Bath Rugby and Bath Rugby Foundation are proud to work with schools across the full spectrum of the curriculum, from primary to independent and secondary schools. Our programme has been endorsed by staff from across the catchment area, including head teachers, teachers, and directors of sport.



*Our partnership with Bath has continued to grow each year. Lewis and his team have supported us in running rugby sessions whilst providing us with some fantastic experiences for our pupils. The opportunities provided by Bath have played a huge factor in the increase of players taking up rugby in the school.*

*We have been able to work with Bath in a variety of ways, providing us with real value. TAG rugby festival support, Rugby Roadshow, Bath Rugby match tickets and our pupils being the guards of honour for the teams. All of these have helped to engage a wider range of pupils and helping to push and develop our rugby community.*

DAVID TOMLINSON (HEAD OF RUGBY) - BOURNEMOUTH COLLEGIATE SCHOOL



*The partnership between our school and the club has grown from strength to strength each year that we have been involved as a community school. This link is superbly run by Lewis and the club, providing great opportunities of immeasurable value to our children who have thoroughly loved every part of their Bath Rugby experiences so far.*

*The mixture of curriculum delivery, after school clubs, TAG rugby festivals, roadshows, Q&A sessions with first team players and the opportunity to become a 'Premiership Rugby Champion' school has really helped involved more of our children in the sport and support of the blue, black and white.*

GARETH BAILEY (HEAD TEACHER) - SOUTHBROOM ST JAMES ACADEMY



**“ The partnership between Leweston and Bath Rugby has been an extremely valuable one. It has allowed the school to grow its rugby footprint, not only within the school community but beyond. The benefits of the partnership have allowed for the development of the sport within the school for boys and girls and has shown the children aspect of rugby beyond just playing the game. We will certainly be continuing our partnership in the future.”**

KEITH BAWDEN (COMMERCIAL AND EVENTS MANAGER) - LEWESTON SCHOOL

**“ All children in Bath Rugby Foundation’s programme have shown positive upturns in behaviour throughout the academic year. The improved resilience, patience and ability to regulate their own emotions has been particularly important due to the inconsistency in routine we’ve had this year. A third children have turned frequently unacceptable behaviour into consistently good behaviour, especially on Fridays, and over half have become noticeably more confident in body language. I would also say they have more frequently interacted with discussions and their peers in the classroom. All children present are happier and calmer because of this intervention.**

MR DURRANT (YEAR 4 TEACHER) - ST MICHAEL’S JUNIOR CHURCH SCHOOL, TWERTON

**“ We were impressed with the positive way the students responded to the Bath Rugby Foundation staff, the students’ level of engagement and the progressive nature of the programme culminating in a unique and memorable sporting challenge at an esteemed Premiership Rugby Venue. The programme offered an engaging and ‘non-threatening’ activity and environment in which participants could be challenged to grow and develop beyond the ‘usual shackles’ of broader institutional targets and expectations.”**

REBECCA JONES (SENCO) - WRITHLINGTON SCHOOL, RADSTOCK



# MINIMUM STANDARDS AND SAFEGUARDING

Our coaches and staff are highly professional, enthusiastic, and motivated individuals who pride themselves on delivering fun, skill-based rugby sessions or interventions. Importantly all our coaches and staff are qualified to deliver in schools as part of our minimum standards and safeguarding requirements.



**Full enhanced DBS check through England Rugby**



**England Rugby Level 2 coaching certificate**



**First Aid Qualification**



**Safeguarding Certificate**

*(find our safeguarding policy on the Bath Rugby website)*



**Proven track record and experience in coaching rugby and delivering inclusive activities and interventions to children in schools and community settings**



**Specialist staff are also**

- Qualified teachers
- Thrive practitioners
- Mental Health First Aiders

## Safeguarding Policy

Bath Rugby and Bath Rugby Foundation are serious about protecting children and young people. We are committed to only working with trusted, skilled, and qualified individuals through rigorous recruitment and training, while also creating a positive environment for all visitors, participants and staff.

**For any safeguarding questions or issues at Bath Rugby, please email [safeguarding@bathrugby.com](mailto:safeguarding@bathrugby.com)**







# PREMIERSHIP RUGBY CHAMPIONS

As an Official Bath Rugby School Partner, your staff will receive bespoke CPD in rugby, including training on the Premiership Rugby Champions app. This is an interactive, cross-curriculum based app supported by the CVC Foundation and BT Supporters Club. The app has been developed with expert learning technology company, Aspire2Be, to inspire primary school children to get moving whilst developing important life skills.

Available on iOS and Android, Premiership Rugby Champions provides primary school teachers with free resources tackling health, numeracy, and character, with digital literacy development the heart of the content. Developed by teachers for teachers, Premiership Rugby Champions provides interactive themed project-based lesson plans and materials for use in the classroom and outside.

## Our Aims



**Develop primary school children's digital literacy skills**



**Use the inspiration and role models of Premiership Rugby clubs to connect pupils' learning to the world around them**



**Improve educational outcomes for young children, increasing their digital know-how, self-esteem and raising their aspirations**



# PREMIERSHIP RUGBY CHAMPIONS

Premiership Rugby is aiming to inspire the current generation of primary school pupils with the launch of its new Premiership Rugby Champions education app.

Available on iOS and Android, Premiership Rugby Champions provides primary school teachers with free resources tackling health, numeracy, and character, with digital literacy development the heart of the content. Developed by teachers for teachers, Premiership Rugby Champions provides interactive, themed project-based lesson plans and materials for use in the classroom and outside.

## Aims

- Develop primary school children's digital literacy skills
- Use the inspiration and role models of Premiership Rugby clubs to connect pupils' learning to the world around them
- Improve educational outcomes for young children, increasing their digital know-how, self-esteem and raising their aspirations

"Professional rugby is proven to improve the lives and educational prospects of children and young people," said Wayne Morris, Premiership Rugby's Community and Corporate Responsibility Director. "Our players are role models to so many young people and the Premiership Rugby Champions app uses the power of rugby to inspire young children to learn, be active and discover their own inner champion to help them achieve their potential."







For further information on becoming a Bath Rugby and Bath Rugby Foundation School Partner, please complete the form on the Bath Rugby website to register:

[BATHRUGBY.COM/COMMUNITY/SCHOOLS-PARTNERSHIP-PROGRAMME](https://BATHRUGBY.COM/COMMUNITY/SCHOOLS-PARTNERSHIP-PROGRAMME)  
[SCHOOLS@BATHRUGBY.COM](mailto:SCHOOLS@BATHRUGBY.COM)



Scan here to find out more

