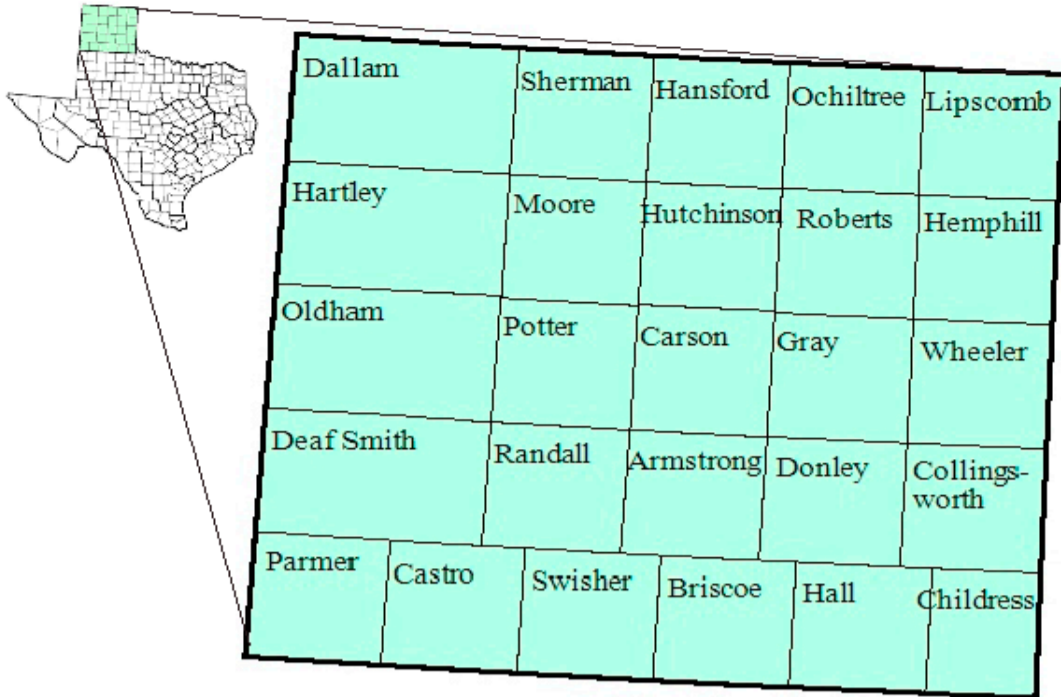


Panhandle Workforce Development Area

May 2016



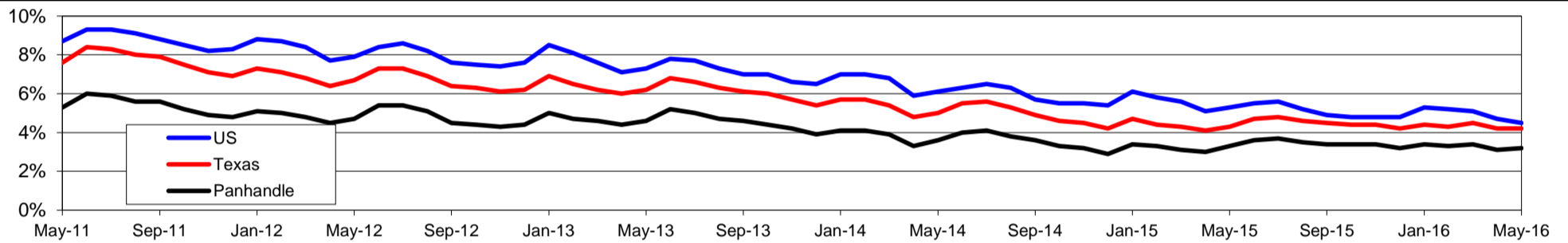
WDA Labor Force Statistics				
	May-16	Apr-16	May-15	OTY
CLF	214,469	212,862	213,969	500
Employed	207,706	206,268	206,889	817
Unemployed	6,763	6,594	7,080	-317
Rate	3.2%	3.1%	3.3%	-0.1%

Texas Labor Force Statistics				
	May-16	Apr-16	May-15	OTY
CLF	13,281,151	13,256,609	13,104,878	176,273
Employed	12,722,051	12,696,103	12,539,222	182,829
Unemployed	559,100	560,506	565,656	-6,556
Rate	4.2%	4.2%	4.3%	-0.1%

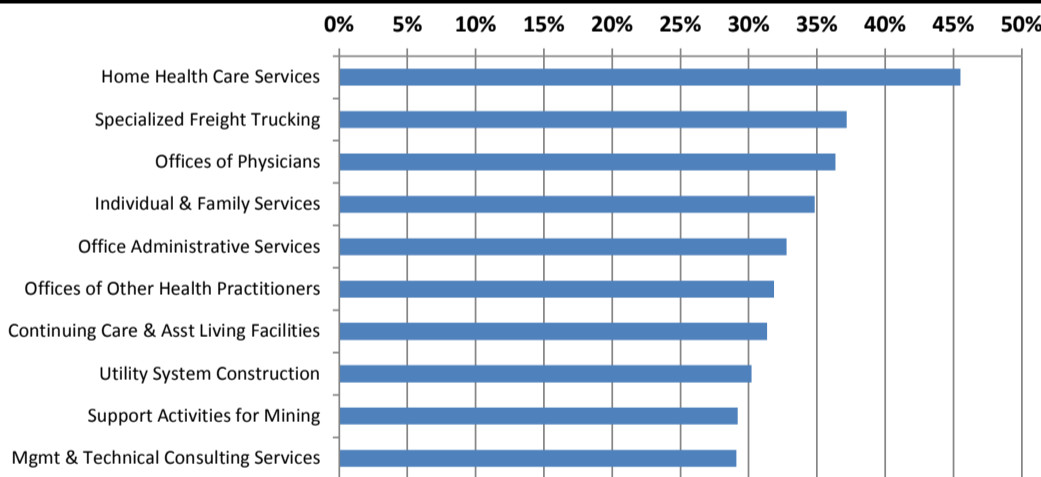
US Labor Force Statistics				
	May-16	Apr-16	May-15	OTY
CLF	158,800,000	158,488,000	157,719,000	1,081,000
Employed	151,594,000	151,075,000	149,349,000	2,245,000
Unemployed	7,207,000	7,413,000	8,370,000	-1,163,000
Rate	4.5%	4.7%	5.3%	-0.8%

Continued Claims for the Week of the 12th				
	May-16	Apr-16	May-15	OTY
WDA	1,306	1,279	1,359	-53
Texas	147,222	148,511	139,731	7,491

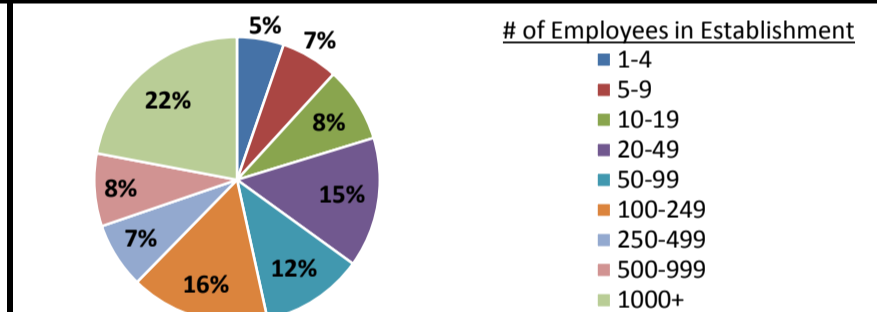
Historical Unemployment Rates



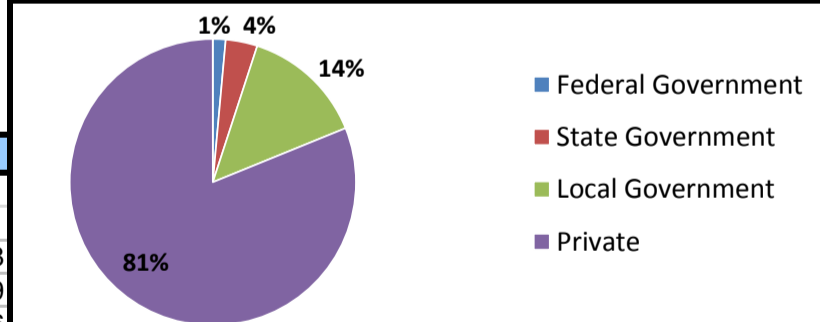
Projected Fastest Growing Industries in WDA (% growth 2012-2022)



Employment by Size Class (4th Quarter 2015)



Employment by Ownership (4th Quarter 2015)



Average Weekly Wage (4th Quarter 2015)

	Q4 2015	Q3 2015	Q4 2014	Change	
				Quarter	Year
WDA	\$895	\$819	\$877	\$76	\$18
Texas	\$1,099	\$999	\$1,070	\$100	\$29
US	\$1,082	\$974	\$1,036	\$108	\$46

Employment by Industry (4th Quarter 2015, Percent Change)

Industry	Employment	% of total	% Change	
			Quarter	Year
Natural resources and mining	15,937	8.4%	-0.2%	-6.8%
Construction	11,377	6.0%	-1.7%	-8.3%
Manufacturing	23,519	12.5%	0.3%	-3.6%
Trade, transportation and utilities	39,944	21.2%	1.2%	0.7%
Information	1,851	1.0%	-0.8%	-5.7%
Financial activities	8,729	4.6%	0.4%	2.5%
Professional and business services	11,868	6.3%	0.4%	5.2%
Education and health services	43,203	22.9%	6.5%	1.6%
Leisure and hospitality	17,774	9.4%	-4.0%	2.1%
Other services	5,616	3.0%	-1.0%	-0.1%
Public administration	8,933	4.7%	-2.6%	-0.1%
Total	188,751	100.0%	1.0%	-0.6%

Employment by Industry (4th Quarter 2015)

