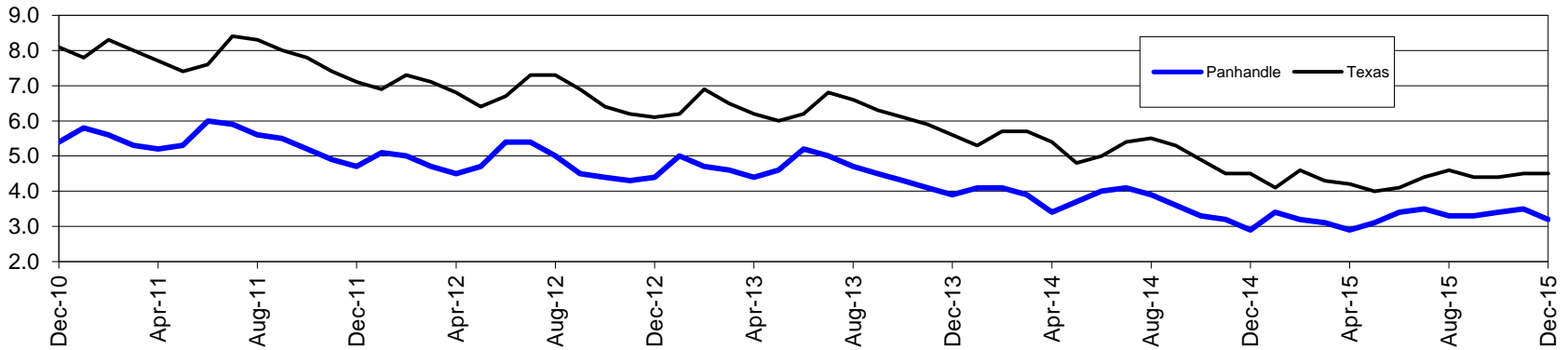


Panhandle Workforce Development Area*

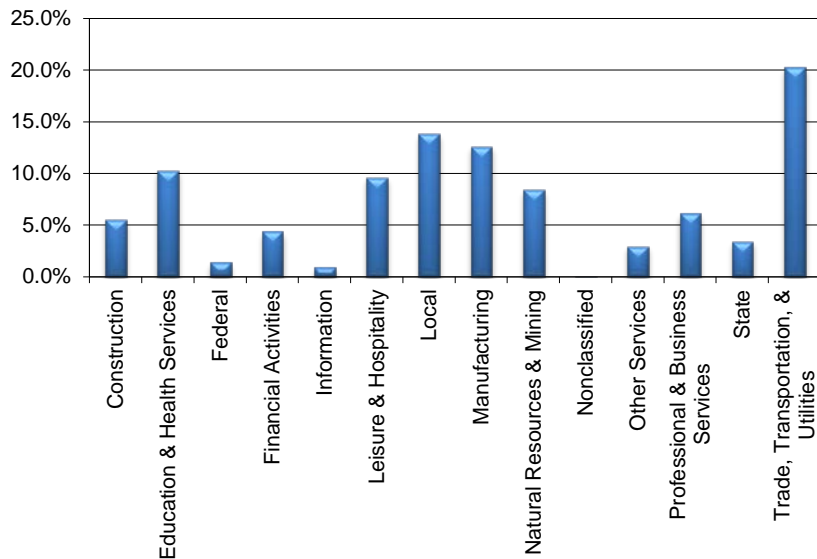
December 2015

Panhandle WDA					Texas				
	CLF	Employed	Unemployed	Rate		CLF	Employed	Unemployed	Rate
Dec-15	209,244	202,537	6,707	3.2	Dec-15	13,077,390	12,522,151	555,239	4.2
Nov-15	209,865	202,594	7,271	3.5	Nov-15	13,099,997	12,506,534	593,463	4.5
Dec-14	214,514	208,249	6,265	2.9	Dec-14	13,152,203	12,612,084	540,119	4.1

Historical Unemployment Rates



Panhandle WDA Industry Composition 2nd Quarter 2015



Total WDA Claims

Continued Claims for the Week of the 12th

	Dec-15	Nov-15	Dec-14	OTY
Continued	1,236	1,217	739	497

Texas Unemployment Insurance Claims

Continued Claims for the Week of the 12th

	Dec-15	Nov-15	Dec-14	OTY
Continued	138,530	134,003	106,015	32,515

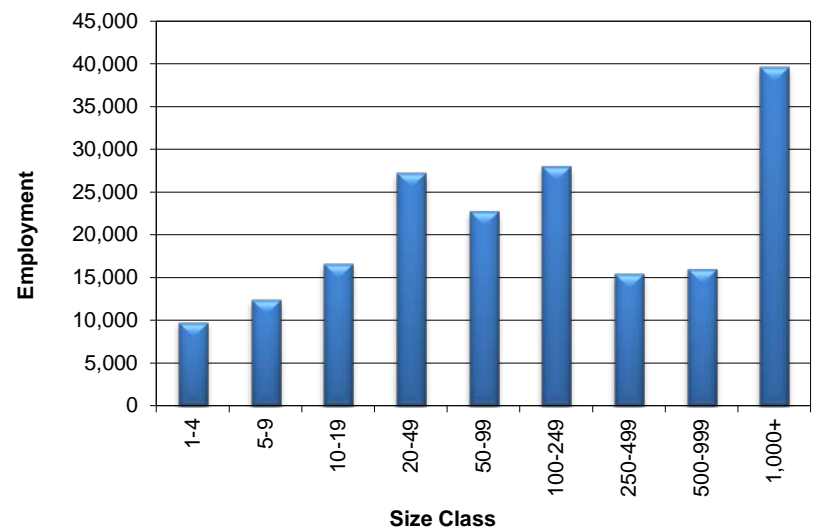
Panhandle WDA Average Weekly Wage

	Panhandle	Texas
2nd Quarter 2015	\$800.09	\$988.47
1st Quarter 2015	\$852.01	\$1,088.07
2nd Quarter 2014	\$785.10	\$973.16
Quarter Change	-\$51.92	-\$99.60
OTY Change	\$14.99	\$15.31

NAICS Covered Employment Quarterly Data 2nd Quarter 2015

SUPER SECTOR	Employment	Change	
		Quarter	Year
Construction	10,388	-1,256	-546
Education & Health Services	19,301	13	37
Federal	2,660	25	71
Financial Activities	8,287	161	267
Information	1,718	20	-87
Leisure & Hospitality	18,090	923	106
Local	25,997	340	286
Manufacturing	23,724	-237	-559
Natural Resources & Mining	15,818	-247	-122
Nonclassified	68	7	16
Other Services	5,598	91	-41
Professional & Business Services	11,535	-12	637
State	6,494	-160	-123
Trade, Transportation, & Utilities	38,060	607	345
TOTAL	187,738	275	287

Size Class Employment Composition 2nd Quarter 2015



*Counties in WDA: Armstrong, Briscoe, Carson, Castro, Childress, Collingsworth, Dallam, Deaf Smith, Donley, Gray, Hall, Hansford, Hartley, Hemphill, Hutchinson, Lipscomb, Moore, Ochiltree, Oldham, Parmer, Potter, Randall, Roberts, Sherman, Swisher, & Wheeler