

## PROGRAM INFO:

## DESIGN/ LAYOUT REQUIREMENTS:

Supplying files that do not follow the guidelines may result in **added charges** to your final invoice.

### ILLUSTRATOR CC OR EARLIER

- Document must be in CMYK.
- Convert ALL fonts to outlines.
- Colors should be specified as PMS Coated -avoid CMYK break downs.
- Please be sure to supply all necessary links. -all links should be in CMYK or grayscale.
- Files should be saved as EPS.

### PHOTOSHOP CC OR EARLIER

- Document must be in RGB
- Layered PSD file may be submitted otherwise flattened Tiff or High Res PDF.
- Please supply fonts with all PSD files.
- If supplying Tif files please delete all extra channels.

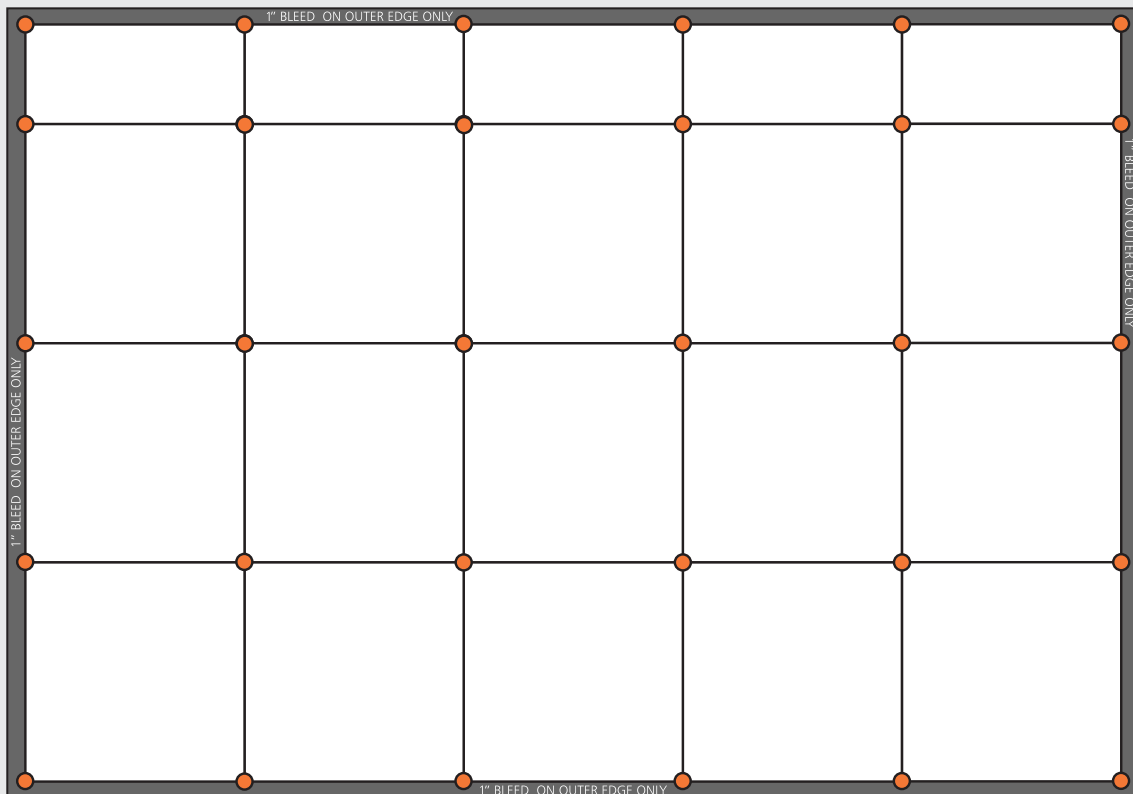
### INDESIGN CC OR EARLIER

- Document must be in RGB.
- Please supply all links and fonts.
- Please provide an converted EPS file.
- High Res PDF may also be submitted.

### FILE PREPARATION

- Bleed is required for all Lite Designs.
- Bleed should be on the perimeter panels only as indicated on the booth sample below.
- If multiple files are provided for one booth configuration, the bleed requirements need to be met in each document.
- All files should be submitted as whole graphics (not divided into panels or columns) on vendor provided templates. Request templates prior to designing.
- Documents should be sized at 100% or exact scale (if sized to scale please provide that information).
- Final file and image size should be no less than 150 DPI at full print size or 300DPI at half scale.
- Review your files at 100% to assure that resolution quality is to your desired print quality.
- **Please be sure to follow the Tips & Tricks on Pg. 2 for optimal output!**

**WE HIGHLY RECOMMEND THAT YOU USE OUR SUPPLIED TEMPLATES FOR DESIGN**



The above rendering is not to scale and should not be used as a template to build your graphic file.

### PANEL SIZES:

#### Full Size Panels

Inside Curve: 27.5"W x 27.5"H  
 Outside Curve: 28.0"W x 27.5"H  
 Straight: 27.5"W x 27.5"H

#### Half Size Panels

Inside Curve: 27.5"W x 12.125"H  
 Outside Curve: 28.0"W x 12.125"H  
 Straight: 27.5"W x 12.125"H  
 Vertical Straight: 12.125"W x 27.5"H

#### Quarter Size Panel

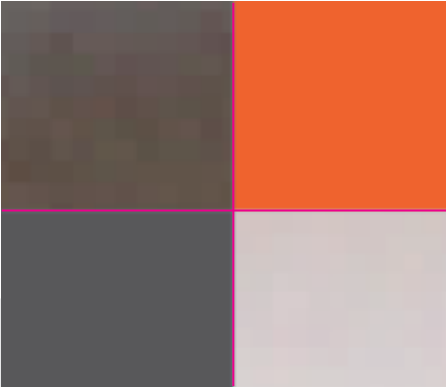
Quarter Straight: 12.125"W x 12.125"H

## TIPS & TRICKS TO SAVE YOU MONEY!

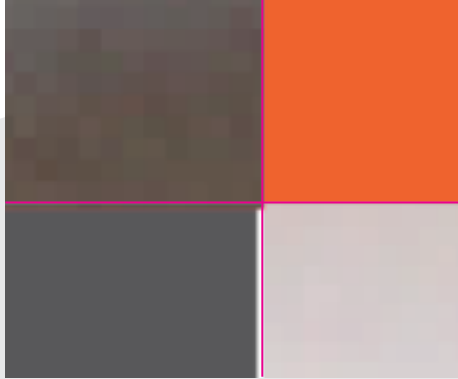
Supplying files that do not follow the guidelines may result in **added file prep charges** to your final invoice.

Be sure to review your file at maximum zoom (6400%) to assure that all graphics line up to the template guidelines. A slight variance can cause mis-registration when graphics are applied to panels.

### GOOD ALIGNMENT

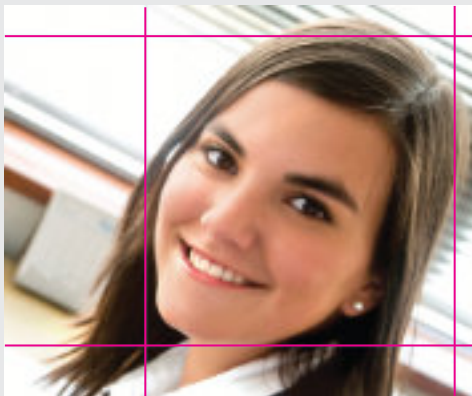


### BAD ALIGNMENT

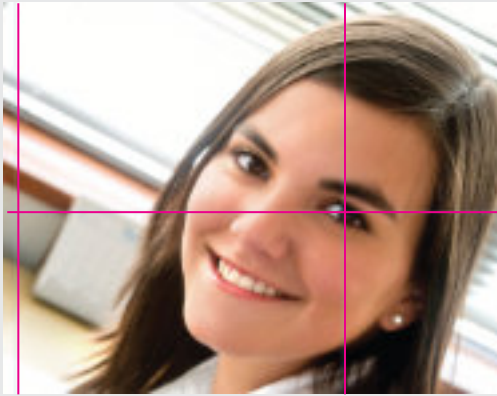


Use care when positioning design elements on nodes. Nodes are not graphically printed.

### GOOD ALIGNMENT



### BAD ALIGNMENT



It's not required, but you should position text so that it does not pass thru a horizontal or vertical seam.

### GOOD PLACEMENT



### BAD PLACEMENT

