



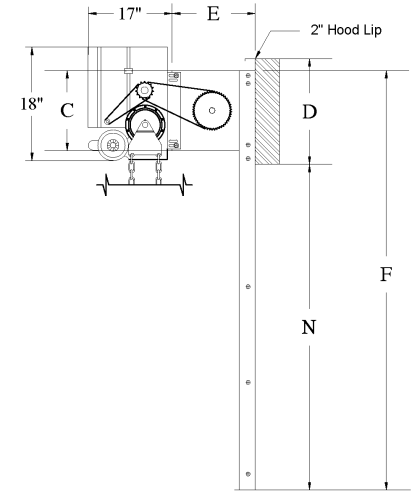
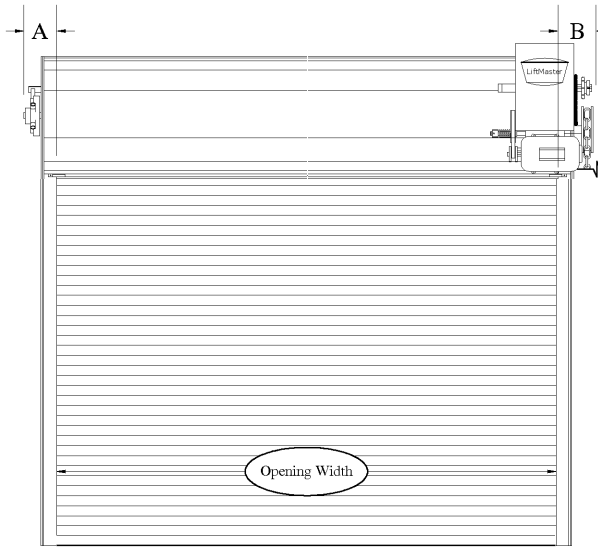
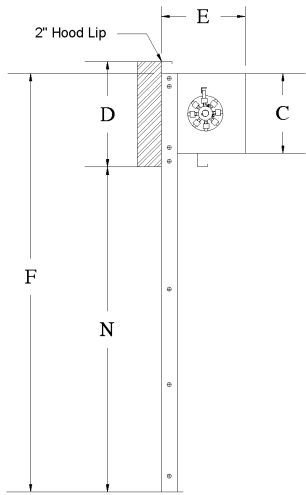
# Service Door 6242 Elevation Data Sheet

Order Number:

		(ft.-in.)	(mm)
A	Tension Side	6"	152mm
B	Drive Side	8-1/2"	216mm
C	Headplate	17"	432mm
D	Headroom	21"	533mm
E	Backroom	18"	457mm
F	Top of Bracket	11' 7"	3531mm
N	Opening Height	10' 0"	3048mm

**Customer:** C.H.I. SPECIAL  
**Door Size:** 9' 0" x 10' 0" / (2743mm x 3048mm)  
**Eng. Number:**  
**Job Name:**  
**P.O.#:**  
**Door Quantity:** 1  
**Windlocks:** None  
**Operation:** Motor - H501L5R OPENER 115/230V 1PH  
**Pre-Load:** 1-3/8

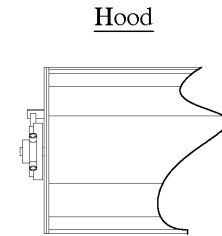
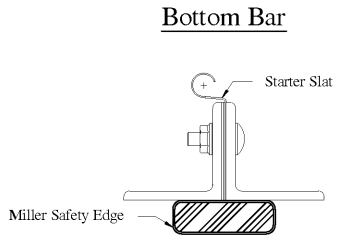
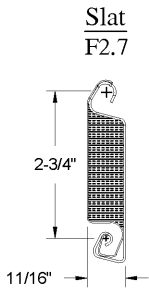
**Drive Side:** RH  
**Mounting:** Interior  
**Jamb Type:** Steel  
**Door Gauge:** 24 Gauge  
**Cyclage:** 20000  
**Left Guide:** HRS  
**Right Guide:** HRS  
**Curtain Color:** (Non-Coil / Coil) White / White



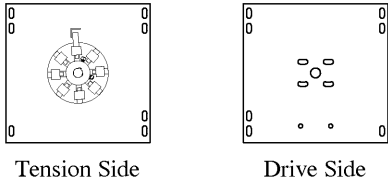
## Miscellaneous Notes

Polyurethane (FIP) R-7.2  
 Front of Hood Op. Bracket  
 Miller 2 Edge

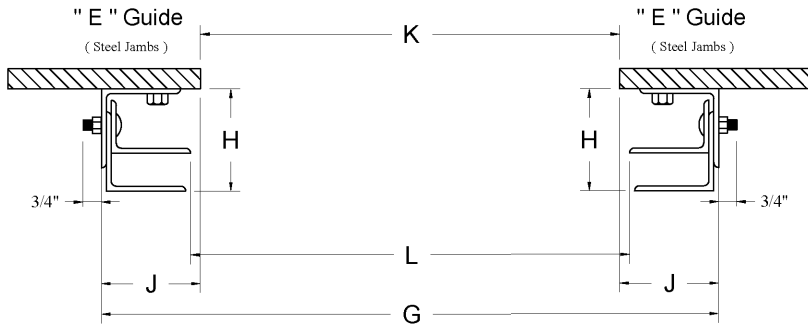
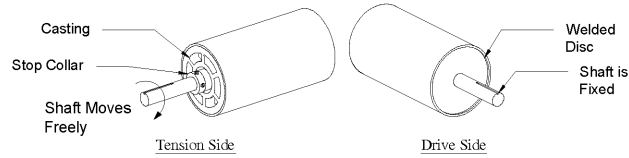
Vinyl Guide Seal  
 4" Header Brush Seal  
 Rubber Hood Baffle



Headplates



Barrel



		(ft.-in.)	(mm.)
G	"X" Dimension	9' 7-1/4"	2927mm
H	Guide Clearance	5"	127mm
J	Guide Side Clearance	3-5/8"	92mm
K	Rough Opening Width	9' 0"	2743mm
L	Guide To Guide	9' 1/2"	2756mm

**\*Critical: 'G'-( "X" Dimension) Must Be Held**



# Specification Sheet Series

## Rolling Steel 6242

Order Number:

- Wind Load:** Standard door construction will withstand 20 p.s.f. in accordance with ASTM E330 using 1.0 factor of safety. Rolling steel doors exposed to wind pressure from any direction will result in the transfer of complex bending and twisting forces to the jambs and supporting structure. A design professional must review the integrity of the jamb, and its attachment to the building, to ensure resistance to both bending and twisting forces.
- Curtain:** Interlocking curtain slats roll-formed from 24 gauge galvanized steel with a 24 gauge backer slat. Insulator of foamed in place urethane insulation. Lateral slat movement and curtain wear controlled by galvanized malleable cast endlocks fastened to every other slat. Windlocks are added as dictated by door size and windload requirements. Insulated slats (IS) cover 2-1/2" by 13/16".
- Bottom Bar:** Fabricated from two galvanized steel angles for non-windlock doors (Standard). Windlock doors use 2" x 2" x 1/8" steel painted (Standard) Galvanized (Optional), bolted back to back with adjustable tubular bottom astragal. Aluminum bottom bar w/keyed cylinder (optional).
- Guides:** Fabricated from three (minimum 3/16") structural steel angles bolted together to form guide channel. Guide angles include curtain stops and flared guides. Hot dipped or cold sprayed galvanized guides (Optional).
- Headplates:** Headplates for mounting curtain, hood and barrel assemblies fabricated from minimum 1/4" steel plate. Drive side of barrel to be provided with precision sealed ball bearing in cast iron housing.
- Barrel:** Fabricated from minimum 4-1/2" O.D. pipe. Deflection under full load not to exceed 0.03" per ft. of span. Barrel provided with threaded rings or lugs welded to the barrel assembly for curtain attachment.
- Springs:** Helical wound torsion spring assemblies are grease packed and designed for a minimum 20,000 cycles of operation as standard. Other spring cycle options include ha reduction to 20 cycles per day or high cycle options of 50,000 and 100,000 cycles.
- Hood:** Fabricated from minimum 24 gauge galvanized steel sheet shaped to fit within the headplates. Intermediate hood support(s) furnished as required.
- Locking:** Manual push-up, chain hoist (standard) or motor operation.
- Operation:** Manual push-up doors furnished with interior slide bolt locks with padlock provision standard. Chain hoist operated doors furnished with chain hoist keeper suitable for padlocking. Cylinder locks available with aluminum bottom bar only.
- Finish:** Curtain slats and hood are hot-dipped galvanized, per ASTM A653 A, with baked on epoxy primer and polyester finish coat available in grey, white, tan, brown, galvanized or powder coating (optional). Guides and headplates shop painted black. Bottom bars to be shop painted black or galvanized.
- Warranty:** Manufacture's standard 5-year from date of plant shipment against defects in materials or workmanship. (Spring wire one year.)
- Installation:** C.H.I. Rolling Steel Doors shall be installed and adjusted according to C.H.I. assembly instructions by trained door service technicians.