

# 2701 HIGH-DEFINITION FIBERGLASS

## PERSONALIZING OPTIONS

GOOD / BETTER / BEST

### COLORS<sup>1</sup>

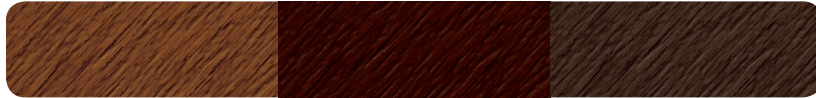


White Almond Sandstone Evergreen



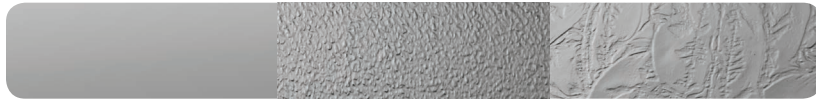
Oak Mahogany Walnut Unfinished

### WOODTONE<sup>1</sup>



Walnut Mahogany Walnut

### GLASS



Plain Obscure Glue Chip

### DESIGNER GLASS



Somerset



Long Arched Somerset



Monticello



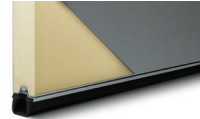
Long Arched Monticello

*Somerset and Monticello shown in platinum leading and are also available with brass leading.*



## Specifications

<b>Panel Style</b>	Fiberglass
<b>Section Construction</b>	2" Thick - 2-Sided Fiberglass and Steel
<b>Section Material</b>	Heavy Duty / Formed Fiberglass and 25 <sup>2</sup> Ga. Steel
<b>Insulation Type</b>	1-7/8" Polyurethane
<b>R-value / Thermal Performance</b>	R-16.95
<b>Window Style<sup>3</sup></b>	Square and Long Arched
<b>Glass</b>	Insulated
<b>Warranty</b>	Limited Lifetime on Sections 3 Years on Springs 6 Years on Hardware



<sup>1</sup> Refer to your local C.H.I. Dealer for exact color and woodtone match. <sup>2</sup> Lower steel gauge [ga.] number indicates stronger steel. <sup>3</sup> Model number indicates window style.

