

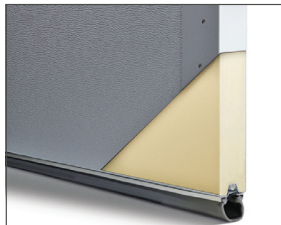


Shown in accents woodtones mahogany with optional madison window inserts.

Accents Woodtones



Insulation



Polyurethane Insulation
R-value¹
R-17.54

3216P PLANKS

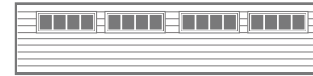
MICRO-GROOVES | 26 GAUGE STEEL | POLYURETHANE INSULATION | R-VALUE¹ R-17.54



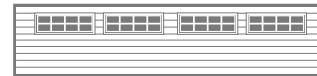
Inserts



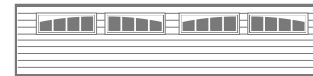
Cascade



Madison



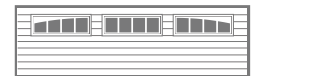
Stockton



2-2 Piece Arched Madison



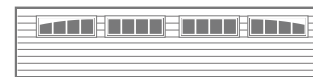
2-2 Piece Arched Stockton



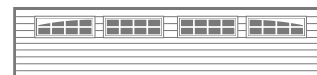
3 Piece Arched Madison



3 Piece Arched Stockton



4 Piece Arched Madison



4 Piece Arched Stockton

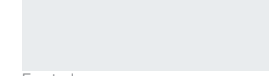
Glass²



Plain



Tinted



Frosted



Obscure

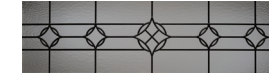


Glue Chip



Seeded

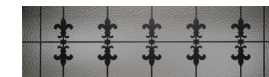
Designer Glass³



Newport



Hampton



Lasalle⁴



Florence

¹ R-value testing is in accordance with ASTM C518 standards. ² Textured or tinted glass lets light in while obscuring vision and improves the natural beauty of your home. ³ All designer glass are either transparent or semi-transparent. ⁴ Available in 21" sections only.

APPEARANCE + LIFETIME PACKAGE

Upgrade lifetime protection plan to your garage door and its hardware. That not only sounds great but looks good too.



These garage doors are available as wind load doors. Refer to your local C.H.I. Dealer if wind load doors are required where you live.



C.H.I. HASSLE-FREE WARRANTY

C.H.I. has a reputation for manufacturing quality garage doors, so it's only fitting that our hassle-free warranty outperforms all others.

Your Local Garage Door Professional

▶ Learn more at www.chiohd.com/3216P