

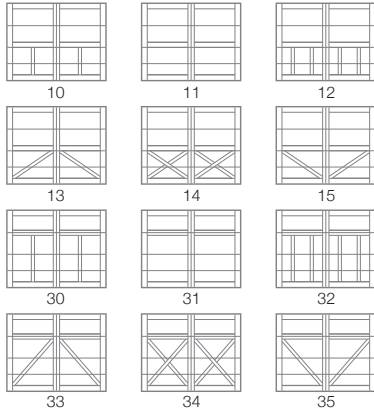
5400 OVERLAY CARRIAGE HOUSE WOOD

PERSONALIZING OPTIONS

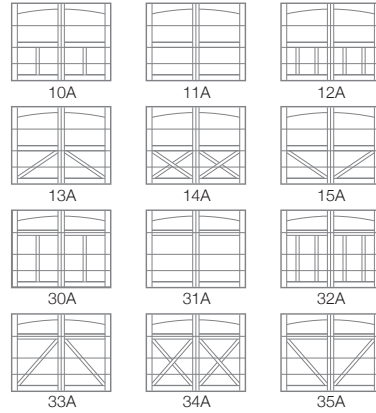
GOOD / **BETTER** / BEST

CARRIAGE HOUSE DESIGNS

Square Tops



Arched Tops



WOOD¹

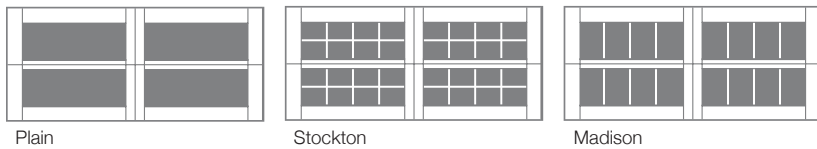


Cedar

Mahogany

WINDOW DESIGNS

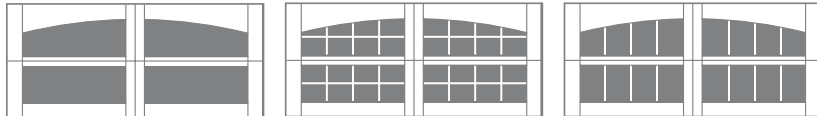
Double Row



Plain

Stockton

Madison



Arched Plain

Arched Stockton

Arched Madison

Single Row



Plain

Stockton

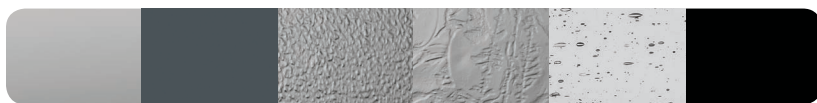
Madison

Arched Plain

Arched Stockton

Arched Madison

GLASS⁴ Plain available as non-insulated Polycarbonate



Plain

Tinted

Obscure

Glue Chip

Seeded

Faux

EXTERIOR HARDWARE



Spade

Wrought Iron

Barcelona 1

Barcelona 2



Specifications

Panel Style	Overlay
Overlay Material	Western Red Cedar or Fijian Mahogany
Section Construction	2-3/4" Thick - 2-Sided Steel
Section Material	Medium Duty / 27 ² Ga. Steel
Insulation Type	1-13/16" Polystyrene
R-value / Thermal Performance	R-10.78
Window Style³	Square or Arched
Glass	Insulated and Non-Insulated
FBC Wind Load⁴	Non-Impact and Impact Rated
TDI Wind Load⁴	Impact Rated Only
Warranty	Limited Lifetime on Sections 3 Years on Overlays 3 Years on Springs 6 Years on Hardware

¹ Refer to your local C.H.I. Dealer for exact wood type match. ² Lower steel gauge [ga.] number indicates stronger steel. ³ Model number indicates design and window style. ⁴ Ask your local C.H.I. Dealer about our full line of wind load rated doors.

Your Local Garage Door Professional

chiohd.com

1485 Sunrise Drive | Arthur, IL 61911 | USA

