





Minutes from historic downtown Hendersonville and only a short drive from Lake Lure, is Vista at Blacksmith Run—an exclusive Western North Carolina mountain property designed for residential development. Blacksmith Run’s secluded mountain lifestyle and four season climate turns an ordinary day into an unforgettable experience. With convenient access to all of Western North Carolina’s treasures, this quiet mountain property was developed for those who appreciate the best that life has to offer.

www.vistadevelopers.com

(*) Optional Features

Above elevation is for illustration purposes only. Actual colors, materials, landscaping, and other details can change at any time

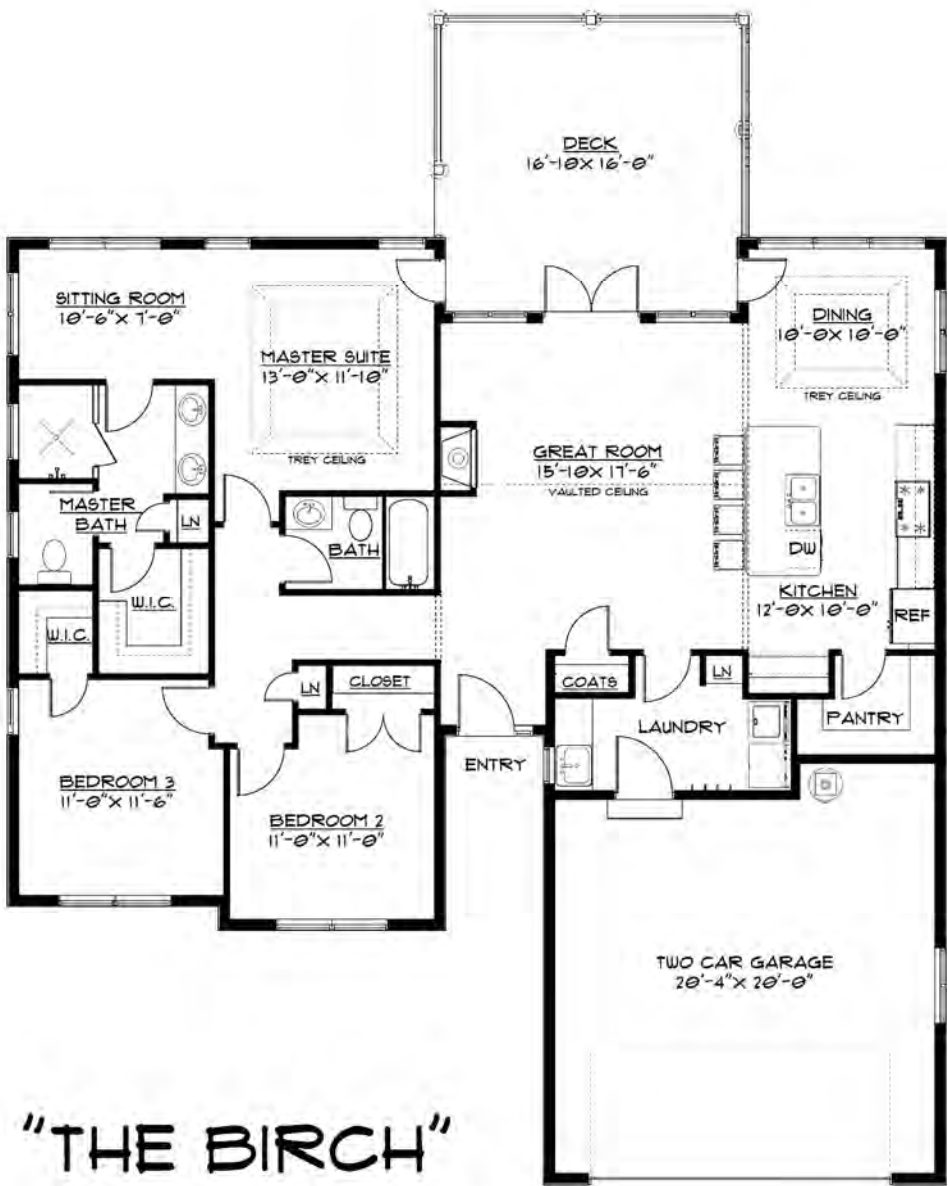
Vista Developers, LLC.
525 N Main St
Hendersonville, NC 28792
828.698.2400

Description

Cottage Style
3 Bedrooms
2 Baths
2 Car Garage

Square Footage

Total Sq Ft: 1568 SF
Garage: 400 SF
Deck: 256 SF



INCLUDED FEATURES

Home Exterior

- * Jeld Wen Double Hung Low Maintenance Windows. Easy Maint. Grid between the glass. Tilt sash removable.
- * Low Maint. Cement Siding
- * Fiberglass Exterior Doors.
- * 2x6 Exterior Wall
- * Lifetime Warranty on Asphalt Shingles

Home Interior

- * 9' Ceilings w/ smooth Finish
- * Vaulted Great Room
- * Tray Ceiling in Master/Dining
- * All wood cabinets with solid maple dovetail drawers and soft close hinges/slides.
- * Granite counter tops
- * Quality Plumbing fixtures.
- * Raised height elongated bowl toilets.
- * Hardwood Flooring in Main Areas
- * Ceramic Tile Flooring in all wet areas
- * Tile Shower enclosure in Master Bath.
- * Carpet in Bedrooms
- * Interior Trim: 3 1/4" Casing and wide 5 1/4" Base molding standard.
- * Walls to have two coats of paint. Walls flat finish and Trim semi-gloss.
- * Solid shelving/wire in closets

*Due to space constraints on brochure the plan renderings may appear slightly different from scaled drawings.

HVAC & Electrical

- * 13 SEER Heat Pump w/ dual zoning where applicable
- * Ceiling fans provided in all Bedrooms and covered deck areas. Light & Fan switched separately.
- * Stainless Whirlpool all Electric Appliances
- * Lighting package to include recessed kitchen lights and pendant lighting over bar/island. Attractive Standard lighting packages.
- * Convenient floor outlets in Living Room.
- * 36" ventless gas fireplace with mantle and stone face finishes
- * Satin nickel, chrome, oil rubbed bronze finishes available for all hardware. Includes towel bars and toilet paper holders for baths.



Description

Cottage Style
3 Bedrooms
2 Baths
2 Car Garage

Square Footage

Total Sq Ft: 1795 SF
Garage: 466 SF
Covered Porch: 181 SF
Entry Porch: 90 SF

Minutes from historic downtown Hendersonville and only a short drive from Lake Lure, is Vista at Blacksmith Run—an exclusive Western North Carolina mountain property designed for residential development. Blacksmith Run’s secluded mountain lifestyle and four season climate turns an ordinary day into an unforgettable experience. With convenient access to all of Western North Carolina’s treasures, this quiet mountain property was developed for those who appreciate the best that life has to offer.

www.vistadevelopers.com

(*) Optional Features

Above elevation is for illustration purposes only. Actual colors, materials, landscaping, and other details can change at any time



INCLUDED FEATURES

Home Exterior

- * Jeld Wen Double Hung Low Maintenance Windows. Easy Maint. Grid between the glass. Tilt sash removable.
- * Low Maint. Cement Siding
- * Fiberglass Exterior Doors.
- * 2x6 Exterior Wall
- * Lifetime Warranty on Asphalt Shingles

Home Interior

- * 9' Ceilings w/ smooth Finish
- * All wood cabinets with solid maple dovetail drawers and soft close hinges/slides.
- * Granite counter tops
- * Quality Plumbing fixtures.
- * Raised height elongated bowl toilets.
- * Hardwood Flooring in Main Areas
- * Ceramic Tile Flooring in all wet areas
- * Tile Shower enclosure in Master Bath.
- * Carpet in Bedrooms
- * Interior Trim: 3 1/4" Casing and wide 5 1/4" Base molding standard.
- * Walls to have two coats of paint. Walls flat finish and Trim semi-gloss.
- * Solid shelving/wire in closets

*Due to space constraints on brochure the plan renderings may appear slightly different from scaled drawings.

HVAC & Electrical

- * 13 SEER Heat Pump w/ dual zoning where applicable
- * Ceiling fans provided in all Bedrooms and covered deck areas. Light & Fan switched separately.
- * Stainless Whirlpool all Electric Appliances
- * Lighting package to include recessed kitchen lights and pendant lighting over bar/island. Attractive Standard lighting packages.
- * Convenient floor outlets in Living Room.
- * 36" ventless gas fireplace with mantle and stone face finishes
- * Satin nickel, chrome, oil rubbed bronze finishes available for all hardware. Includes towel bars and toilet paper holders for baths.



Minutes from historic downtown Hendersonville and only a short drive from Lake Lure, is Vista at Blacksmith Run—an exclusive Western North Carolina mountain property designed for residential development. Blacksmith Run’s secluded mountain lifestyle and four season climate turns an ordinary day into an unforgettable experience. With convenient access to all of Western North Carolina’s treasures, this quiet mountain property was developed for those who appreciate the best that life has to offer.

www.vistadevelopers.com

(*) **Optional Features**

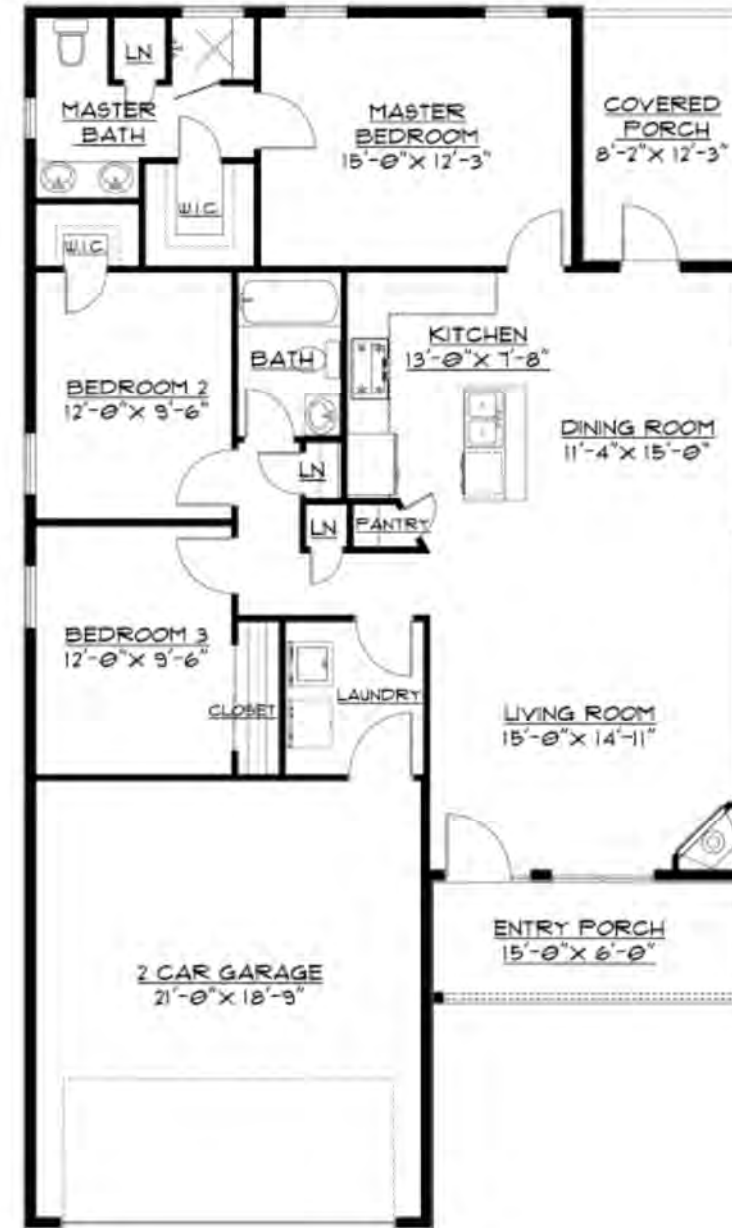
Above elevation is for illustration purposes only. Actual colors, materials, landscaping, and other details can change at any time

Description

Cottage Style
3 Bedrooms
2 Baths
2 Car Garage

Square Footage

Total Sq Ft: 1264 SF
Garage: 425 SF
Covered Porch: 96 SF
Entry Porch: 90 SF



INCLUDED FEATURES

Home Exterior

- * Jeld Wen Double Hung Low Maintenance Windows. Easy Maint. Grid between the glass. Tilt sash removable.
- * Low Maint. Cement Siding
- * Fiberglass Exterior Doors.
- * 2x6 Exterior Wall
- * Lifetime Warranty on Asphalt Shingles

Home Interior

- * 9' Ceilings w/ smooth Finish
- * All wood cabinets with solid maple dovetail drawers and soft close hinges/slides.
- * Granite counter tops
- * Quality Plumbing fixtures.
- * Raised height elongated bowl toilets.
- * Hardwood Flooring in Main Areas
- * Ceramic Tile Flooring in all wet areas
- * Tile Shower enclosure in Master Bath.
- * Carpet in Bedrooms
- * Interior Trim: 3 1/4" Casing and wide 5 1/4" Base molding standard.
- * Walls to have two coats of paint. Walls flat finish and Trim semi-gloss.
- * Solid shelving/wire in closets

*Due to space constraints on brochure the plan renderings may appear slightly different from scaled drawings.

HVAC & Electrical

- * 13 SEER Heat Pump w/ dual zoning where applicable
- * Ceiling fans provided in all Bedrooms and covered deck areas. Light & Fan switched separately.
- * Stainless Whirlpool all Electric Appliances
- * Lighting package to include recessed kitchen lights and pendant lighting over bar/island. Attractive Standard lighting packages.
- * Convenient floor outlets in Living Room.
- * 36" ventless gas fireplace with mantle and stone face finishes
- * Satin nickel, chrome, oil rubbed bronze finishes available for all hardware.
- Includes towel bars and toilet paper holders for baths.



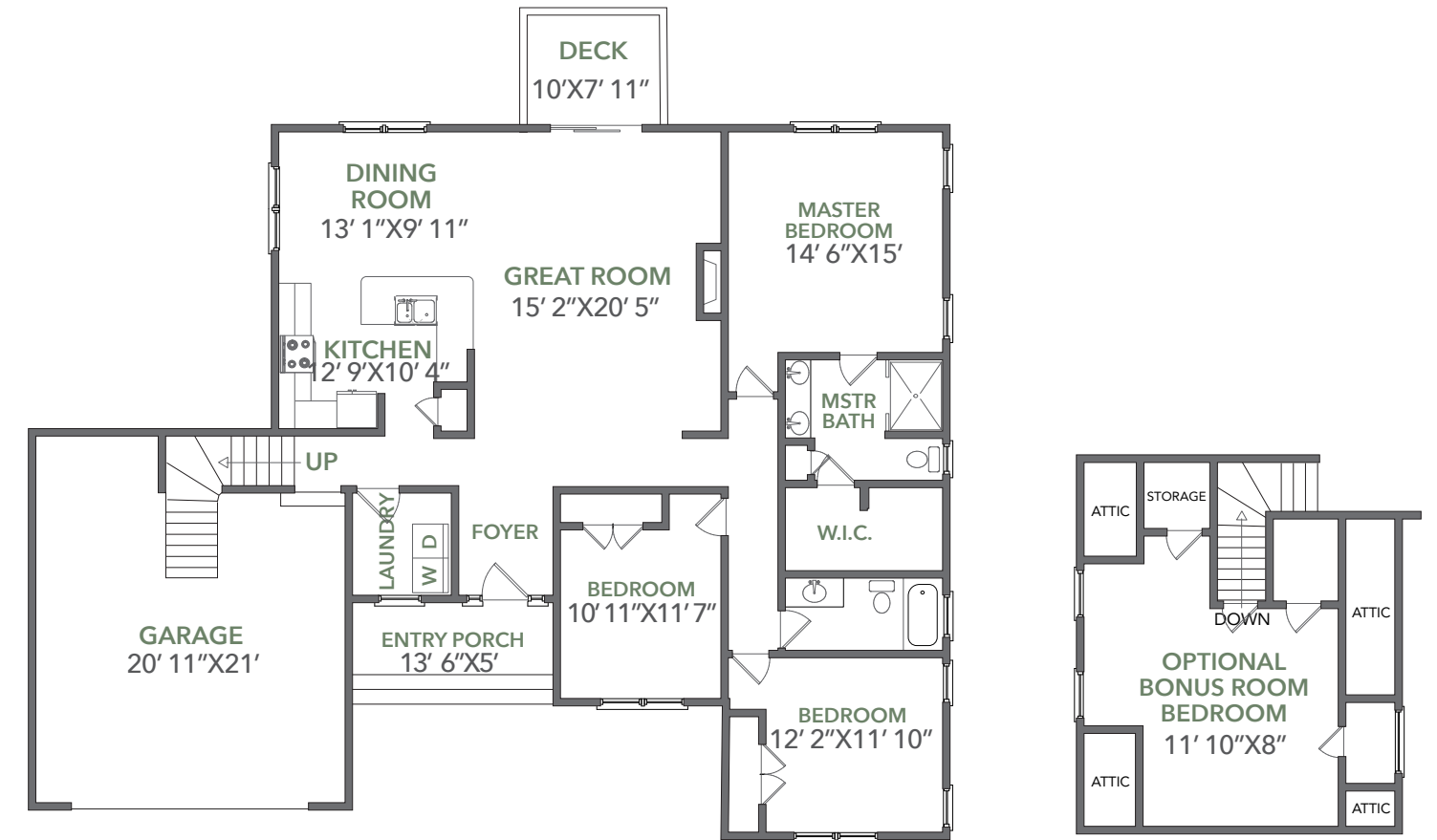
Minutes from historic downtown Hendersonville and only a short drive from Lake Lure, is Vista at Blacksmith Run—an exclusive Western North Carolina mountain property designed for residential development. Blacksmith Run's secluded mountain lifestyle and four season climate turns an ordinary day into an unforgettable experience. With convenient access to all of Western North Carolina's treasures, this quiet mountain property was developed for those who appreciate the best that life has to offer.

www.vistadevelopers.com

TOTAL HEATED : 1,792 SQ.FT.
W/ Optional Bonus Room: 2,167 SQ. FT.

ENTRY PORCH : 68 SQ. FT
DECK : 205 SQ. FT

BEDROOMS : 3
BATHS : 2



SPECIFICATIONS

- 3 bedrooms, 2 baths on main level
- Optional bonus room over garage
- Attached 2 car garage
- Large Covered Porch
- Propane fireplace on main level

EXTERIOR FEATURES

- Jeld-Wen low maintenance windows
- Double hung windows makes cleaning easy
- Low maintenance cement siding and composite trim
- Covered porch on front & rear
- Stained cedar shakes
- Fiberglass doors for easy maintenance

INTERIOR FEATURES

- 9' interior ceilings
- Large vaulted ceilings
- Granite countertops
- Hardwood floors in common areas
- Quality carpet in bedrooms and optional bonus
- Tile bathrooms

THE POPLAR



Minutes from historic downtown Hendersonville and only a short drive from Lake Lure, is Vista at Blacksmith Run—an exclusive Western North Carolina mountain property designed for residential development. Blacksmith Run's secluded mountain lifestyle and four season climate turns an ordinary day into an unforgettable experience. With convenient access to all of Western North Carolina's treasures, this quiet mountain property was developed for those who appreciate the best that life has to offer.

www.vistadevelopers.com

DESCRIPTION

Craftsman Style
3 Bedrooms
2 Bathrooms
2 Car Garage

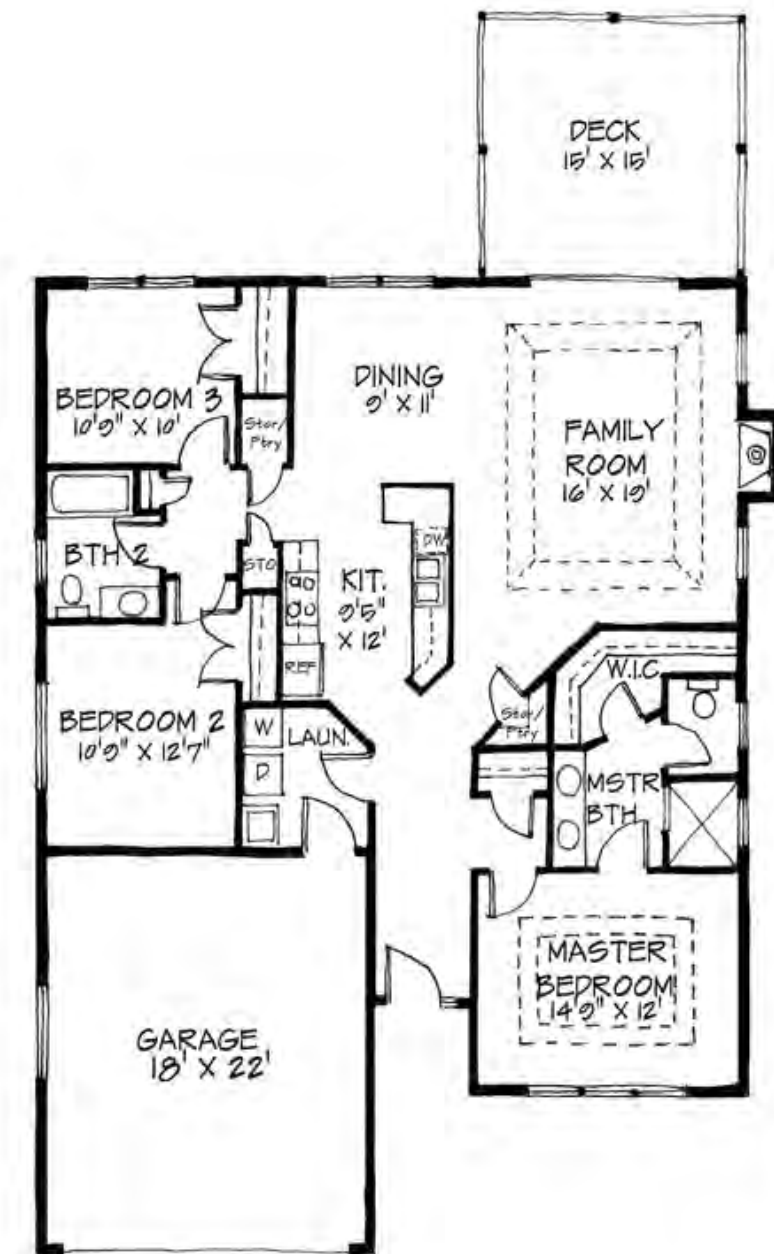
HEATED SQUARE FOOTAGE

1,580 Square Feet

OVERALL DIMENSIONS

40' x 55'

THE POPLAR



SPECIFICATIONS

- 1,580 heated square feet all on one level
- 3 bedrooms, 2 baths
- Attached 2 car garage
- Gas fireplace
- Tiled master bath shower

EXTERIOR FEATURES

- Jeld-Wen low maintenance windows
- Stone veneer accents
- Low maintenance cement siding
- Low maintenance exterior trim
- Large deck off family room
- Fiberglass doors for easy maintenance

INTERIOR FEATURES

- 9' ceilings throughout
- Large open kitchen with island
- Open floor plan
- Granite tops in kitchen & all baths
- Full tile shower in master
- Tray ceiling in Master bedroom
- Tray ceiling in Family room
- Hardwood floors in main living areas
- High quality carpet in bedrooms

THE BLACKBERRY



Minutes from historic downtown Hendersonville and only a short drive from Lake Lure, is Vista at Blacksmith Run—an exclusive Western North Carolina mountain property designed for residential development. Blacksmith Run's secluded mountain lifestyle and four season climate turns an ordinary day into an unforgettable experience. With convenient access to all of Western North Carolina's treasures, this quiet mountain property was developed for those who appreciate the best that life has to offer.

www.vistadevelopers.com

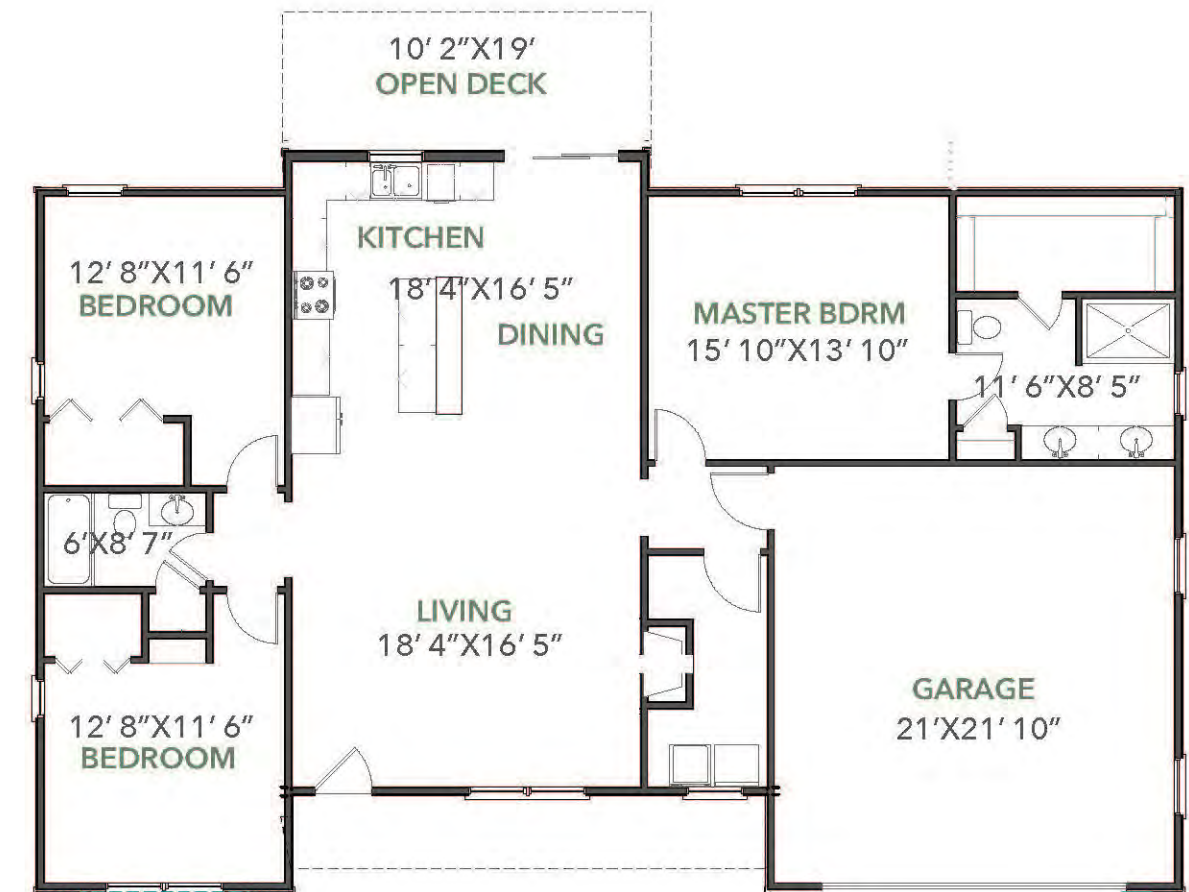
TOTAL HEATED : 1,640 SQ. FT.

FRONT COVERED PORCH : 125 SQ. FT.

REAR OPEN PORCH : 190 SQ. FT.

BEDROOMS : 3

BATHS : 2



SPECIFICATIONS

- 1,640 heated square feet all on one level
- 3 bedrooms, 2 baths
- Master on the main level
- Attached 2 car garage
- Gas furnace heating
- Gas fireplace
- Large open deck on rear
- Covered porch on front

EXTERIOR FEATURES

- Jeld-Wen low maintenance windows
- Double hung windows makes cleaning easy
- Low maintenance cement siding
- Low maintenance exterior trim
- Covered porch on front and rear
- Stained cedar shakes
- Fiberglass doors for easy maintenance

INTERIOR FEATURES

- 9' ceilings in all bedrooms
- 12' ceilings in living, dining and kitchen area
- Open floor plan
- Hardwoods in common areas, carpet in bedrooms
- Full tile shower in master
- Delta plumbing fixtures
- Walk-in laundry room

THE NANTAHALA



Minutes from historic downtown Hendersonville and only a short drive from Lake Lure, is Vista at Blacksmith Run—an exclusive Western North Carolina mountain property designed for residential development. Blacksmith Run's secluded mountain lifestyle and four season climate turns an ordinary day into an unforgettable experience. With convenient access to all of Western North Carolina's treasures, this quiet mountain property was developed for those who appreciate the best that life has to offer.

DESCRIPTION

Craftsman Style
3 Bedrooms
2 Bathrooms
2 Car Garage

HEATED SQUARE FOOTAGE

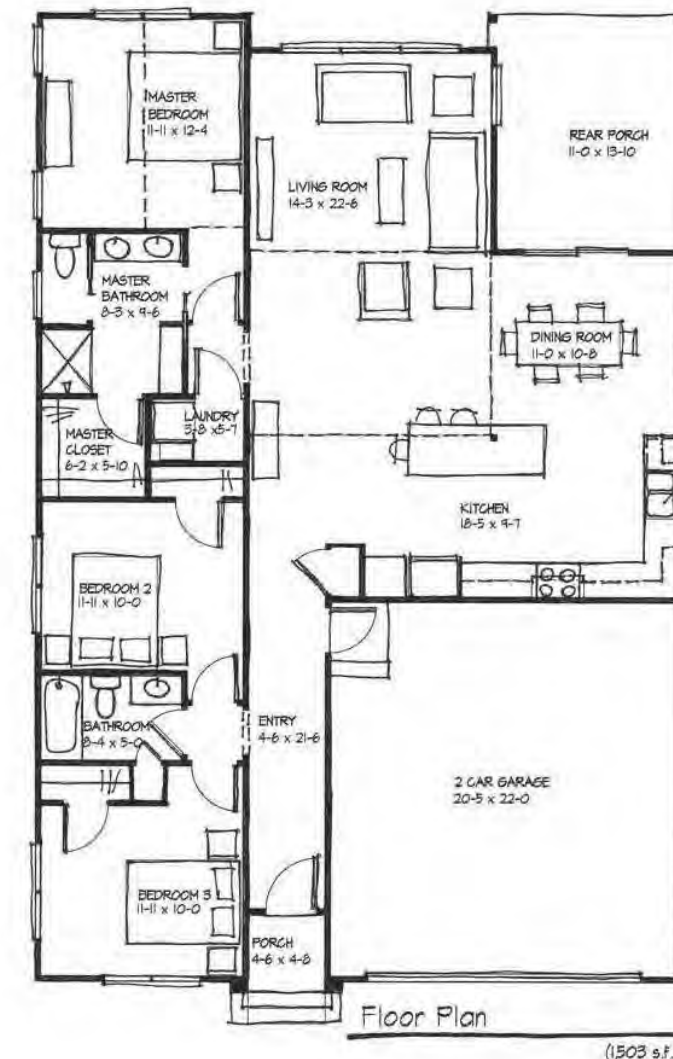
1,503 Square Feet

OVERALL DIMENSIONS

38' 0" x 57' 8"

www.vistadevelopers.com

THE NANTAHALA



THE NANTAHALA

- Craftsman Style
- 3 Bedrooms
- 2 Bathrooms
- 2 Car Garage

TOTAL HEATED

1,503 Square Feet

DIMENSIONS

38' 0" x 57' 8"

THE FONTANA



Minutes from historic downtown Hendersonville and only a short drive from Lake Lure, is Vista at Blacksmith Run—an exclusive Western North Carolina mountain property designed for residential development. Blacksmith Run's secluded mountain lifestyle and four season climate turns an ordinary day into an unforgettable experience. With convenient access to all of Western North Carolina's treasures, this quiet mountain property was developed for those who appreciate the best that life has to offer.

www.vistadevelopers.com

DESCRIPTION

Craftsman Style
2 Bedrooms
2 Bathrooms
2 Car Garage

HEATED SQUARE FOOTAGE

1,220 Square Feet

OVERALL DIMENSIONS

38' 0" x 60' 8"

THE FONTANA



THE FONTANA

- Craftsman Style
- 2 Bedrooms
- 2 Bathrooms
- 2 Car Garage

TOTAL HEATED

1,220 Square Feet

DIMENSIONS

38' 0" x 60' 8"

SPRUCE



Minutes from historic downtown Hendersonville and only a short drive from Lake Lure, is Vista at Blacksmith Run—an exclusive Western North Carolina mountain property designed for residential development. Blacksmith Run's secluded mountain lifestyle and four season climate turns an ordinary day into an unforgettable experience. With convenient access to all of Western North Carolina's treasures, this quiet mountain property was developed for those who appreciate the best that life has to offer.

TOTAL HEATED : 1,617 SQ. FT.

ENTRY PORCH: 98 SQ. FT.

DECK: 108 SQ. FT.

BEDROOMS : 3

BATHS : 2



SPECIFICATIONS

- 1,617 heated square feet
- 3 bedrooms, 2 baths
- Large covered deck
- Gas fireplace

EXTERIOR FEATURES

- Low maintenance cement siding
- Composite trim
- Architectural siding
- Jeld-Wen vinyl windows
- Low maintenance fiberglass exterior doors

INTERIOR FEATURES

- Quality hardwood flooring in all the common areas
- 9' ceilings throughout
- Granite counter tops
- Large laundry and mud room

THE FAULKNER

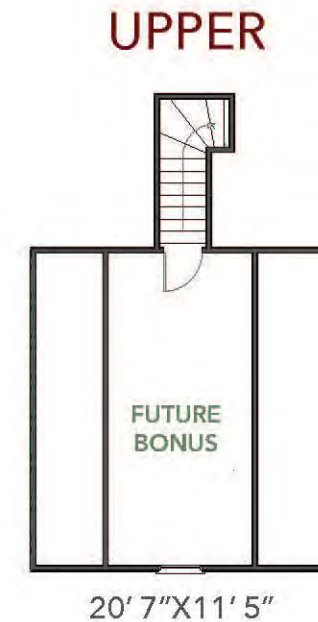


Minutes from historic downtown Hendersonville and only a short drive from Lake Lure, is Vista at Blacksmith Run—an exclusive Western North Carolina mountain property designed for residential development. Blacksmith Run's secluded mountain lifestyle and four season climate turns an ordinary day into an unforgettable experience. With convenient access to all of Western North Carolina's treasures, this quiet mountain property was developed for those who appreciate the best that life has to offer.

MAIN FLOOR : 1,683 SQ. FT.
OPTIONAL BONUS ROOM : 280 SQ. FT.
TOTAL HEATED : 1,963 SQ. FT.
BEDROOMS : 3
BATHS : 2

www.vistadevelopers.com

THE FAULKNER



SPECIFICATIONS

- 3 bedrooms, 2 baths on main level
- Bonus room above garage
- Attached 2 car garage
- Gas fireplace on main floor
- Large covered porch

EXTERIOR FEATURES

- Jeld-Wen low maintenance windows
- Double hung windows makes cleaning easy
- Low maintenance cement siding
- Low maintenance exterior trim
- Covered porch on front and rear
- Stained cedar shakes
- Fiberglass doors for easy maintenance
- Rock details on front of home

INTERIOR FEATURES

- 9' interior ceilings
- Large vaulted ceilings on main
- Delta plumbing fixtures
- Large bar top in kitchen
- Granite tops in kitchen and master
- Large laundry and pantry area
- Hardwoods throughout, carpet in bedrooms

LEO



Minutes from historic downtown Hendersonville and only a short drive from Lake Lure, is Vista at Blacksmith Run—an exclusive Western North Carolina mountain property designed for residential development. Blacksmith Run's secluded mountain lifestyle and four season climate turns an ordinary day into an unforgettable experience. With convenient access to all of Western North Carolina's treasures, this quiet mountain property was developed for those who appreciate the best that life has to offer.

www.vistadevelopers.com

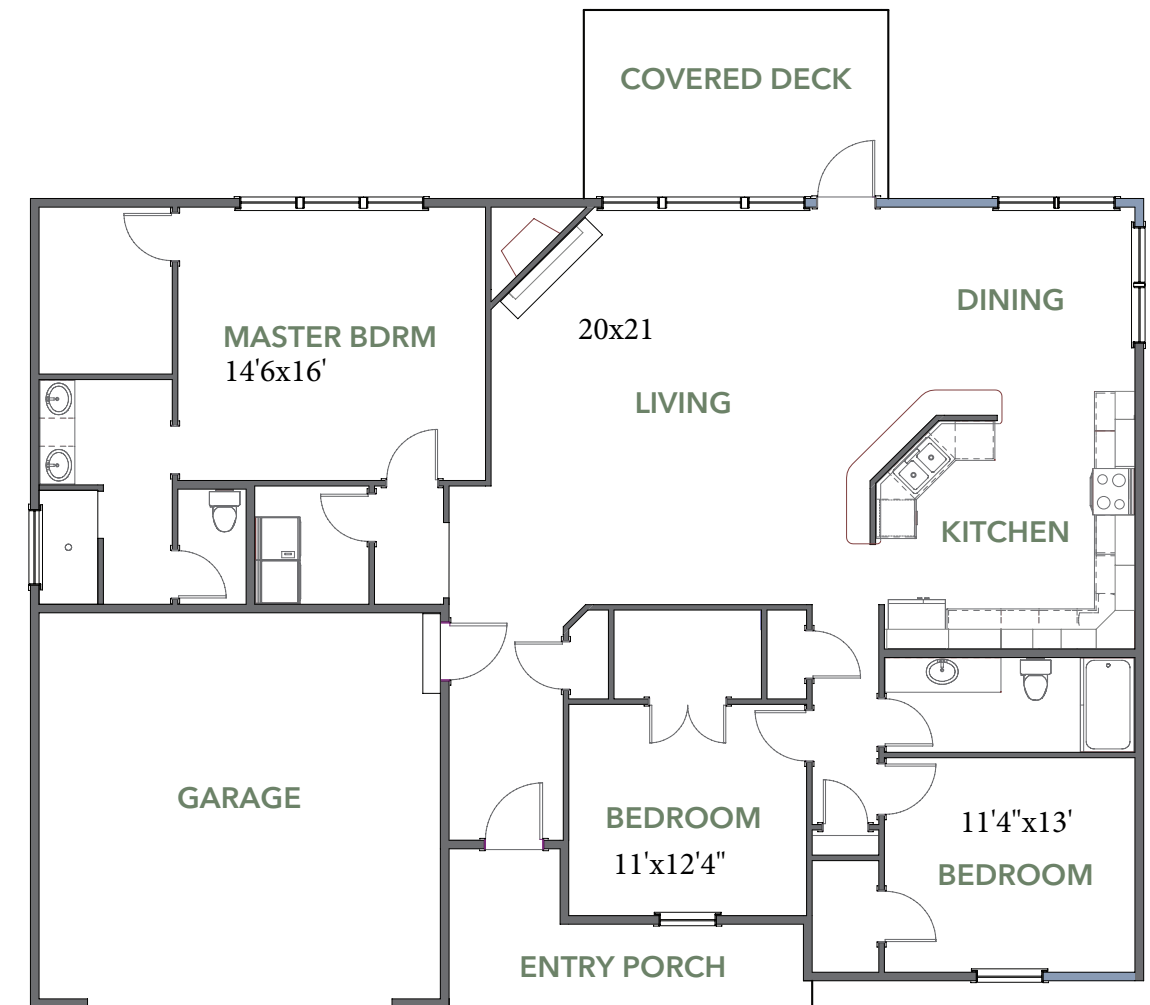
TOTAL HEATED : 1,910 SQ. FT.

ENTRY PORCH : 108 SQ. FT.

DECK : 165 SQ. FT.

BEDROOMS : 3

BATHS : 2



SPECIFICATIONS

- 3 bedrooms, 2 baths on main level
- Attached 2 car garage
- Gas fireplace
- Tiled master bath shower

EXTERIOR FEATURES

- Jeld-Wen low maintenance windows
- Double hung windows makes cleaning easy
- Low maintenance cement siding
- Low maintenance exterior trim
- Large covered porch on front & rear
- Stained cedar shakes
- Fiberglass doors for easy maintenance
- Rock details on front of home

INTERIOR FEATURES

- 9' interior ceilings
- Granite tops in kitchen & all baths
- Large laundry and pantry area
- Hardwood floors in main living areas
- Quality carpet in bedrooms



Minutes from historic downtown Hendersonville and only a short drive from Lake Lure, is Vista at Blacksmith Run—an exclusive Western North Carolina mountain property designed for residential development. Blacksmith Run's secluded mountain lifestyle and four season climate turns an ordinary day into an unforgettable experience. With convenient access to all of Western North Carolina's treasures, this quiet mountain property was developed for those who appreciate the best that life has to offer.

www.vistadevelopers.com

(*) Optional Features

Above elevation is for illustration purposes only. Actual colors, materials, landscaping, and other details can change at any time. Rendering may reflect upgrades to exterior finishes.

CLA Builders, Inc.
118 Ashwood Road
Hendersonville, NC 28791
828.698.3911



Description

Cottage Style
3 Bedrooms
2 Baths
2 Car Garage
***Optional Bonus Room/ 4th Bedroom available.**

Square Footage

Main: 1454 SF
***Bonus Room: 193 SF**
Total Finished: 1647 SF
Garage: 450 SF
Rear Porch: 76 SF
Covered Porch: 85 SF



*Due to space constraints on brochure the plan renderings may appear slightly different from scaled drawings.

HVAC & Electrical

- * 13 SEER Heat Pump w/ dual zoning where applicable
- * Ceiling fans provided in all Bedrooms and covered deck areas. Light & Fan switched separately.
- * Stainless all Electric Appliances
- * Lighting package to include recessed kitchen lights and pendant lighting over bar/island. Attractive Standard lighting packages.
- * Convenient floor outlets in Living Room.
- * 36" ventless gas fireplace with mantle and stone face finishes
- * Satin nickel, chrome, oil rubbed bronze finishes available for all hardware. Includes towel bars and toilet paper holders for baths.

INCLUDED FEATURES

Home Exterior

- * Jeld Wen Double Hung Low Maintenance Windows. Easy Maint. Grid between the glass. Tilt sash removable.
- * Low Maint. Cement Siding
- * Fiberglass Exterior Doors.
- * ZIP Wall exterior sheathing
- * 2x6 Exterior Wall
- * Lifetime Warranty on Asphalt Shingles

Home Interior

- * 9' Ceilings w/ smooth Finish
- * Tray Ceiling standard in DR
- * Great Room Vaulted Ceiling.
- * All wood cabinets with solid maple dovetail drawers and soft close hinges/slides. Crown molding. 36"-42" Wall cabinets.
- * Granite counter tops
- * Quality Plumbing fixtures. Raised height elongated bowl toilets.
- * Hardwood Flooring in Main Areas
- * Ceramic Tile Flooring in all wet areas
- * Tile Shower enclosure in Master Bath.
- * Curb less shower entry for easy access.
- * ADA blocking for future grab bars.
- * Carpet in Bedrooms
- * Interior Trim: Walls to have two coats of paint. Walls flat finish and Trim semi-gloss. 3 1/4" Casing and wide 5 1/4" Base molding standard.
- * Solid shelving/wire in closets

THE LAUREL



Minutes from historic downtown Hendersonville and only a short drive from Lake Lure, is Vista at Blacksmith Run—an exclusive Western North Carolina mountain property designed for residential development. Blacksmith Run's secluded mountain lifestyle and four season climate turns an ordinary day into an unforgettable experience. With convenient access to all of Western North Carolina's treasures, this quiet mountain property was developed for those who appreciate the best that life has to offer.

www.vistadevelopers.com

Above elevation is for illustration purposes only. Actual colors, materials, landscaping, and other details can change at any time.

DESCRIPTION

Craftsman Style
4 Bedrooms + Study
3 Bathrooms
2 Car Garage

SQUARE FOOTAGE

Garage: 448 sq. ft.
Main: 1689 sq. ft.
Opt. Bonus Room: 282 sq. ft.
Patio: 192 sq. ft.
Porch: 197 sq. ft.



THE LAUREL

SPECIFICATIONS:

1689 Heated Space
Optional Bonus Room
282 sq. ft.
Master BR on Main
2 Spare Bedrooms on Main
Attached 2 Car Garage
Gas Fireplace
Heat Pump System

EXTERIOR FEATURES:

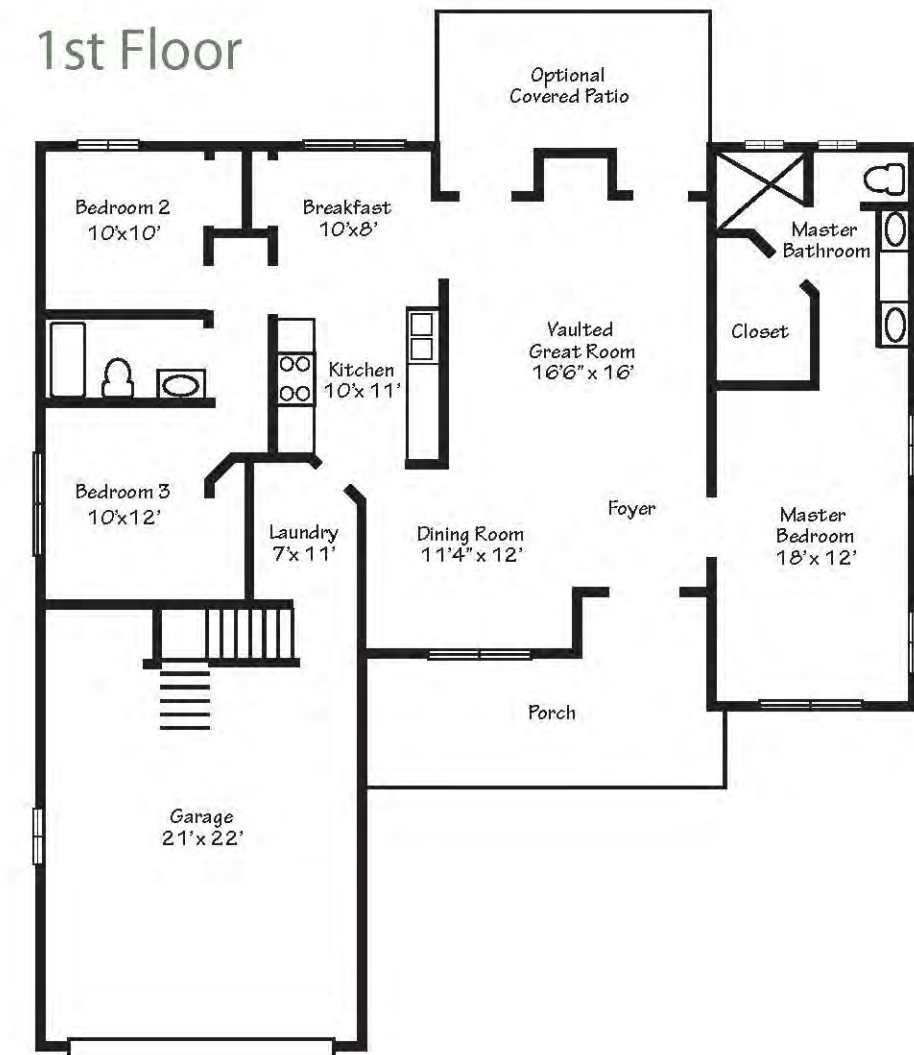
Jeld-Wen Double Hung
Low Maintenance Windows
Cement Siding
Covered front porch
Fiberglass entry doors

INTERIOR FEATURES:

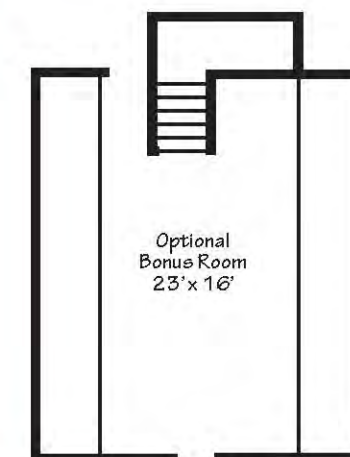
9' Ceilings
Vaulted Greatroom
Open Floor Plan
Granite Countertops Throughout
Laundry on Main
Hardwood in Main living Areas
Carpet in Bedrooms
Ceramic Tile in Wet areas.



1st Floor



2nd Floor



THE ESSEX



Minutes from historic downtown Hendersonville and only a short drive from Lake Lure, is Vista at Blacksmith Run—an exclusive Western North Carolina mountain property designed for residential development. Blacksmith Run's secluded mountain lifestyle and four season climate turns an ordinary day into an unforgettable experience. With convenient access to all of Western North Carolina's treasures, this quiet mountain property was developed for those who appreciate the best that life has to offer.

www.vistadevelopers.com

Above elevation is for illustration purposes only. Actual colors, materials, landscaping, and other details can change at any time.

DESCRIPTION

Craftsman Style
3 Bedrooms
2 Bathrooms
2 Car Garage

SQUARE FOOTAGE

Garage: 436 sq. ft.
Main: 1395 sq. ft.



THE ESSEX

SPECIFICATIONS:

1395 Heated Spacel
Master BR on Main
2 Spare Bedrooms on Main
Attached 2 Car Garage
Gas Fireplace
Heat Pump System

EXTERIOR FEATURES:

Jeld-Wen Double Hung
Low Maintenance Windows
Cement Siding
Covered front porch
Fiberglass entry doors

INTERIOR FEATURES:

9' Ceilings
Vaulted Greatroom
Open Floor Plan
Granite Countertops Throughout
Laundry on Main
Hardwood in Main living Areas
Carpet in Bedrooms
Ceramic Tile in Wet areas.



Floorplan





Minutes from historic downtown Hendersonville and only a short drive from Lake Lure, is Vista at Blacksmith Run—an exclusive Western North Carolina mountain property designed for residential development. Blacksmith Run's secluded mountain lifestyle and four season climate turns an ordinary day into an unforgettable experience. With convenient access to all of Western North Carolina's treasures, this quiet mountain property was developed for those who appreciate the best that life has to offer.

www.vistadevelopers.com

(*) **Optional Features**

Above elevation is for illustration purposes only. Actual colors, materials, landscaping, and other details can change at any time

CLA Builders, Inc.
118 Ashwood Road
Hendersonville, NC 28791
828.698.3911

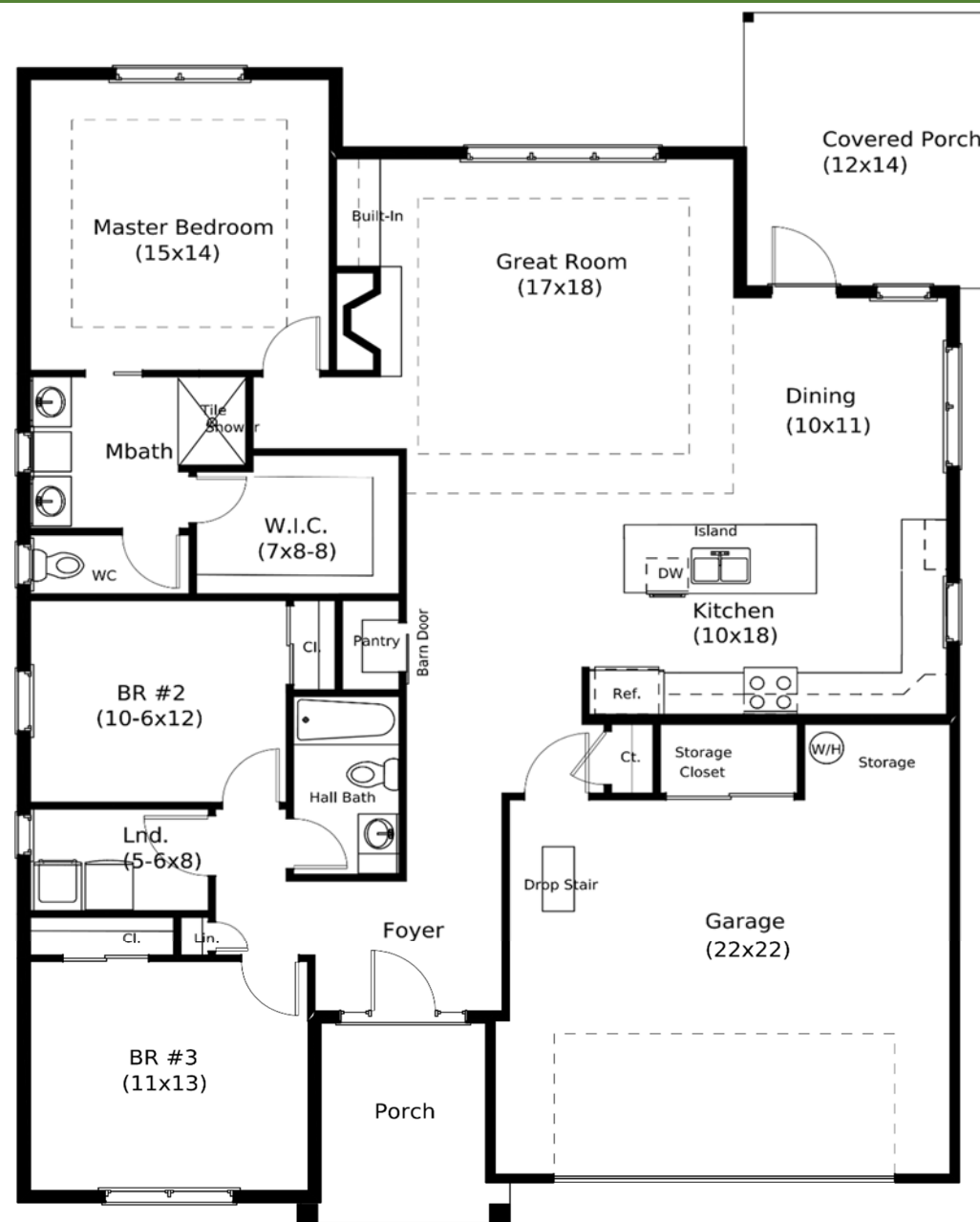


Description

Cottage Style
3 Bedrooms
2 Baths
2 Car Garage

Square Footage

Main: 1750 SF
Total Finished: 1750 SF
Garage: 506 SF
***Covered Deck: 168SF**
Covered Porch: 40 SF



INCLUDED FEATURES

Home Exterior

- * Jeld Wen Double Hung Low Maintenance Windows. Easy Maint. Grid between the glass. Tilt sash removable.
- * Low Maint. Cement Siding
- * Fiberglass Exterior Doors.
- * ZIP Wall exterior sheathing
- * 2x6 Exterior Wall
- * Lifetime Warranty on Asphalt Shingles

Home Interior

- * 9' Ceilings w/ smooth Finish
- * Tray Ceiling standard in Gr & DR
- * All wood cabinets with solid maple dovetail drawers and soft close hinges/slides. Crown molding. 36"-42" Wall cabinets.
- * Granite counter tops
- * Quality Plumbing fixtures.
- * Raised height elongated bowl toilets.
- * Hardwood Flooring in Main Areas
- * Ceramic Tile Flooring in all wet areas
- * Tile Shower enclosure in Master Bath.
- * Curb less shower entry for easy access.
- * ADA blocking for future grab bars.
- * Carpet in Bedrooms
- * Interior Trim: Walls to have two coats of paint. Walls flat finish and Trim semi-gloss. 3 1/4" Casing and wide 5 1/4" Base molding standard.
- * Barn Door Pantry
- * Solid shelving/wire in closets

*Due to space constraints on brochure the plan renderings may appear slightly different from scaled drawings.

HVAC & Electrical

- * 13 SEER Heat Pump w/ dual zoning where applicable
- * Ceiling fans provided in all Bedrooms and covered deck areas. Light & Fan switched separately.
- * Stainless all Electric Appliances
- * Lighting package to include recessed kitchen lights and pendant lighting over bar/island. Attractive Standard lighting packages.
- * Convenient floor outlets in Living Room.
- * 36" ventless gas fireplace with mantle and stone face finishes
- * Satin nickel, chrome, oil rubbed bronze finishes available for all hardware. Includes towel bars and toilet paper holders for baths.

The Ferncliff



Minutes from historic downtown Hendersonville and only a short drive from Lake Lure, is Vista at Blacksmith Run—an exclusive Western North Carolina mountain property designed for residential development. Blacksmith Run's secluded mountain lifestyle and four season climate turns an ordinary day into an unforgettable experience. With convenient access to all of Western North Carolina's treasures, this quiet mountain property was developed for those who appreciate the best that life has to offer.

www.vistadevelopers.com

(*) Optional Features

CLA Builders, Inc.
118 Ashwood Road
Hendersonville, NC 28791
828.698.3911

Description

Cottage Style
3 Bedrooms
2 Baths
2 Car Garage
***Optional Bonus Room**
design available.

Square Footage

Main: 1716 SF
Total Finished: 1716 SF
Garage: 528 SF
***Covered Deck: 132 SF**
***Covered Porch: 100 SF**



*Due to space constraints on brochure the plan renderings may appear slightly different from scaled drawings.

HVAC & Electrical

- * 13 SEER Heat Pump w/ dual zoning where applicable
- * Ceiling fans provided in all Bedrooms and covered deck areas. Light & Fan switched separately.
- * Stainless all Electric Appliances
- * Lighting package to include recessed kitchen lights and pendant lighting over bar/island. Attractive Standard lighting packages.
- * Convenient floor outlets in Living Room.
- * 36" ventless gas fireplace with mantle and stone face finishes
- * Satin nickel, chrome, oil rubbed bronze finishes available for all hardware. Includes towel bars and toilet paper holders for baths.

INCLUDED FEATURES

Home Exterior

- * Jeld Wen Double Hung Low Maintenance Windows. Easy Maint. Grid between the glass. Tilt sash removable.
- * Low Maint. Cement Siding
- * Fiberglass Exterior Doors.
- * ZIP Wall exterior sheathing
- * 2x6 Exterior Wall
- * Lifetime Warranty on Asphalt Shingles

Home Interior

- * 9' Ceilings w/ smooth Finish
- * Tray Ceiling standard in DR
- * Great Room Vaulted Ceiling.
- * All wood cabinets with solid maple dovetail drawers and soft close hinges/slides. Crown molding. 36"-42" Wall cabinets.
- * Granite counter tops
- * Quality Plumbing fixtures. Raised height elongated bowl toilets.
- * Hardwood Flooring in Main Areas
- * Ceramic Tile Flooring in all wet areas
- * Tile Shower enclosure in Master Bath.
- * Curb less shower entry for easy access.
- * ADA blocking for future grab bars.
- * Carpet in Bedrooms
- * Interior Trim: Walls to have two coats of paint. Walls flat finish and Trim semi-gloss. 3 1/4" Casing and wide 5 1/4" Base molding standard.
- * Solid shelving/wire in closets



THE ASHWOOD



Minutes from historic downtown Hendersonville and only a short drive from Lake Lure, is Vista at Blacksmith Run—an exclusive Western North Carolina mountain property designed for residential development. Blacksmith Run's secluded mountain lifestyle and four season climate turns an ordinary day into an unforgettable experience. With convenient access to all of Western North Carolina's treasures, this quiet mountain property was developed for those who appreciate the best that life has to offer.

www.vistadevelopers.com

Above elevation is for illustration purposes only. Actual colors, materials, landscaping, and other details can change at any time.

DESCRIPTION

Craftsman Style
3 Bedrooms
2 Bathrooms
2 Car Garage

SQUARE FOOTAGE

Garage: 476 sq. ft.
Main: 1521 sq. ft.
Bonus: 283 sq. ft.



THE ASHWOOD

SPECIFICATIONS:

1804 Heated sq footage
Master BR on Main
Finished Bonus Room
Attached 2 Car Garage
Gas Fireplace
Heat Pump System

EXTERIOR FEATURES:

Jeld-Wen Double Hung
Low Maintenance Windows
Cement Siding
Covered front porch
Fiberglass entry doors

INTERIOR FEATURES:

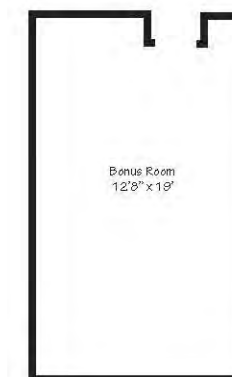
9' Ceilings
Vaulted Greatroom
Open Floor Plan
Granite Countertops Throughout
Large Utility / Laundry
Hardwood in Main living Areas
Carpet in Bedrooms
Ceramic Tile in Wet areas.



1st Floor



2nd Floor



525 NORTH MAIN STREET HENDERSONVILLE NC 28792 • 1-866-519-2400

THE RIDGEWOOD



Minutes from historic downtown Hendersonville and only a short drive from Lake Lure, is Vista at Blacksmith Run—an exclusive Western North Carolina mountain property designed for residential development. Blacksmith Run's secluded mountain lifestyle and four season climate turns an ordinary day into an unforgettable experience. With convenient access to all of Western North Carolina's treasures, this quiet mountain property was developed for those who appreciate the best that life has to offer.

www.vistadevelopers.com

Above elevation is for illustration purposes only. Actual colors, materials, landscaping, and other details can change without notice.

DESCRIPTION

Craftsman Style
4 Bedrooms
3 Bathrooms
2 Car Garage

SQUARE FOOTAGE

Garage: 454 sq. ft.
Main: 1,756 sq. ft.
Bonus: 340 sq. ft.



THE RIDGEWOOD

SPECIFICATIONS:

2096 SF Heated Space
Master BR on Main
2 Spare Bedrooms on Main
Large Bonus room with Bath
(4th Bedroom)
Attached 2 Car Garage
Gas Fireplace
Heat Pump System

EXTERIOR FEATURES

Jeld-Wen Double Hung
Low Maintenance Windows
Cement Siding
Covered front porch
Large Covered Rear Porch
with Patio
Fiberglass entry doors

INTERIOR FEATURES

9' Ceilings
Vaulted Greatroom
Open Floor Plan
Granite Countertops Throughout
Laundry on Main
Hardwood in Main living Areas
Carpet in Bedrooms
Ceramic Tile in Wet areas.



1st Floor



2nd Floor



THE KIMBERLY



Minutes from historic downtown Hendersonville and only a short drive from Lake Lure, is Vista at Blacksmith Run—an exclusive Western North Carolina mountain property designed for residential development. Blacksmith Run's secluded mountain lifestyle and four season climate turns an ordinary day into an unforgettable experience. With convenient access to all of Western North Carolina's treasures, this quiet mountain property was developed for those who appreciate the best that life has to offer.

www.vistadevelopers.com

Above elevation is for illustration purposes only. Actual colors, materials, landscaping, and other details can change at any time.

DESCRIPTION

Craftsman Style
4 Bedrooms
3 Bathrooms
2 Car Garage

SQUARE FOOTAGE

Car port: 341 sq. ft.
Garage: 693 sq. ft.
Main: 1764 sq. ft.
Bonus: 484 sq. ft.



THE KIMBERLY

SPECIFICATIONS:

2248 Heated Space
Master BR on Main
2 Spare Bedrooms on Main
Large Bonus room with Bath
(4th Bedroom)
Attached 2 Car Garage
Gas Fireplace
Heat Pump System

EXTERIOR FEATURES

Jeld-Wen Double Hung
Low Maintenance Windows
Cement Siding
Covered front porch
Large Covered Rear Porch
with Patio
Fiberglass entry doors

INTERIOR FEATURES

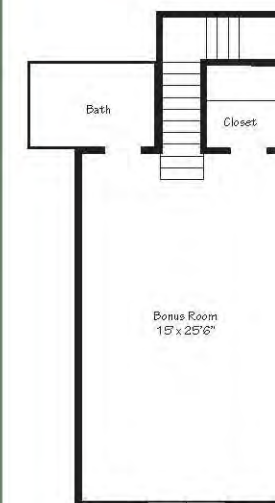
9' Ceilings
Vaulted GR
Open Floor Plan
Granite Countertops Throughout
Laundry on Main
Hardwood in Main living Areas
Carpet in Bedrooms
Ceramic Tile in Wet areas.



1st Floor



2nd Floor



The Ferndale



Minutes from historic downtown Hendersonville and only a short drive from Lake Lure, is Vista at Blacksmith Run—an exclusive Western North Carolina mountain property designed for residential development. Blacksmith Run's secluded mountain lifestyle and four season climate turns an ordinary day into an unforgettable experience. With convenient access to all of Western North Carolina's treasures, this quiet mountain property was developed for those who appreciate the best that life has to offer.

www.vistadevelopers.com

(*) Optional Features

CLA Builders, Inc.
118 Ashwood Road
Hendersonville, NC 28791
828.698.3911

Description

Cottage Style
3 Bedrooms
2 Baths
2 Car Garage
*Optional Bonus Room
(4th Bedroom & Bath)

Square Footage

Main: 2069 SF
Bonus Room: 302 SF
Total Heated: 2371 SF
Garage: 528 SF
*Covered Deck: 144 SF
*Covered Porch: 45 SF
*Deck: 192 SF



*Due to space constraints on brochure the plan renderings may appear slightly different from scaled drawings.

The Ferndale

INCLUDED FEATURES

Home Exterior

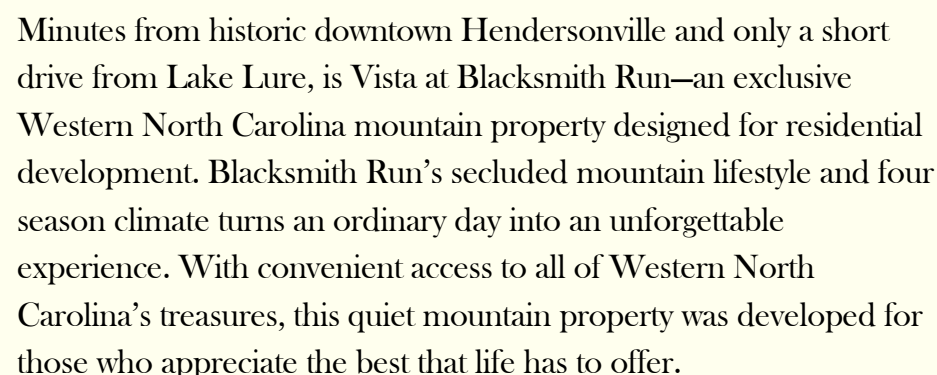
- * Jeld Wen Double Hung Low Maintenance Windows. Easy Maint. Grid between the glass. Tilt sash removable.
- * Low Maint. Cement Siding
- * Fiberglass Exterior Doors.
- * ZIP Wall exterior sheathing
- * 2x6 Exterior Wall
- * Lifetime Warranty on Asphalt Shingles

Home Interior

- * 9' Ceilings w/ smooth Finish
- * Tray Ceiling optional.
- * All wood cabinets with solid maple dovetail drawers and soft close hinges/slides. Crown molding. 36"-42" Wall cabinets.
- * Granite counter tops
- * Quality Plumbing fixtures. Raised height elongated bowl toilets.
- * Hardwood Flooring in Main Areas
- * Ceramic Tile Flooring in all wet areas
- * Tile Shower enclosure in Master Bath.
- * Curb less shower entry for easy access.
- * ADA blocking for future grab bars.
- * Carpet in Bedrooms
- * Interior Trim: Walls to have two coats of paint. Walls flat finish and Trim semi-gloss. 3 1/4" Casing and wide 5 1/4" Base molding standard.
- * Solid shelving/wire in closets

HVAC & Electrical

- * 13 SEER Heat Pump w/ dual zoning where applicable
- * Ceiling fans provided in all Bedrooms and covered deck areas. Light & Fan switched separately.
- * Stainless all Electric Appliances
- * Lighting package to include recessed kitchen lights and pendant lighting over bar/island. Attractive Standard lighting packages.
- * Convenient floor outlets in Living Room.
- * 36" ventless gas fireplace with mantle and stone face finishes
- * Satin nickel, chrome, oil rubbed bronze finishes available for all hardware. Includes towel bars and toilet paper holders for baths.



Cottage Style
3 Bedrooms
2 Baths
2 Car Garage

Main:	2140 SF
Total Finished:	2140 SF
Garage:	576 SF
*Covered Deck:	216 SF
*Deck:	130 SF
Covered Porch:	40 SF

(*) Optional Features

Above elevation is for illustration purposes only. Actual colors, materials, landscaping, and other details can change at any time. Rendering may reflect upgrades to exterior finishes

CLA Builders, Inc.
118 Ashwood Road
Hendersonville, NC 28791
828.698.3911



Vista at
**BLACKSMITH
RUN**

The Briarwood

3635 Chimney Rock Road • Hendersonville, NC • 28792 • 828.685.3818

INCLUDED FEATURES

Home Exterior

* Jeld Wen Double Hung Low Maintenance Windows. Easy Maint. Grid between the glass. Tilt sash removable.

- * Low Maint. Cement Siding
- * Fiberglass Exterior Doors.
- * ZIP Wall exterior sheathing
- * 2x6 Exterior Wall
- * Lifetime Warranty on Asphalt Shingles

Home Interior

- * 9' Ceilings w/ smooth Finish
- * Vaulted ceiling in GR & Kitchen
- * Tray Ceiling standard in DR
- * All wood cabinets with solid maple dovetail drawers and soft close hinges/slides. Crown molding. 36"-42" Wall cabinets.
- * Built-in Banquet style breakfast area.
- * Granite counter tops
- * Quality Plumbing fixtures.
- Raised height elongated bowl toilets.
- * Hardwood Flooring in Main Areas
- * Ceramic Tile Flooring in all wet areas
- * Tile Shower enclosure in Master Bath.
- * Curb less shower entry for easy access.
- * ADA blocking for future grab bars.

- * Carpet in Bedrooms
- * Interior Trim: Walls to have two coats of paint. Walls flat finish and Trim semi-gloss. 3 1/4" Casing and wide 5 1/4" Base molding standard.
- * Solid shelving/wire in closets



*Due to space constraints on brochure the plan renderings may appear slightly different from scaled drawings.

HVAC & Electrical

- * 13 SEER Heat Pump w/ dual zoning where applicable
- * Ceiling fans provided in all Bedrooms and covered deck areas.
Light & Fan switched separately.
- * Stainless all Electric Appliances
- * Lighting package to include recessed kitchen lights and pendant lighting over bar/island. Attractive Standard lighting packages.
- * Convenient floor outlets in Living Room.
- * 36" ventless gas fireplace with mantle and stone face finishes
- * Satin nickel, chrome, oil rubbed bronze finishes available for all hardware.

Includes towel bars and toilet paper holders for baths.