





Minutes from historic downtown Hendersonville and only a short drive from Lake Lure, is Vista at Blacksmith Run—an exclusive Western North Carolina mountain property designed for residential development. Blacksmith Run's secluded mountain lifestyle and four season climate turns an ordinary day into an unforgettable experience. With convenient access to all of Western North Carolina's treasures, this quiet mountain property was developed for those who appreciate the best that life has to offer.

www.vistadevelopers.com

DESCRIPTION

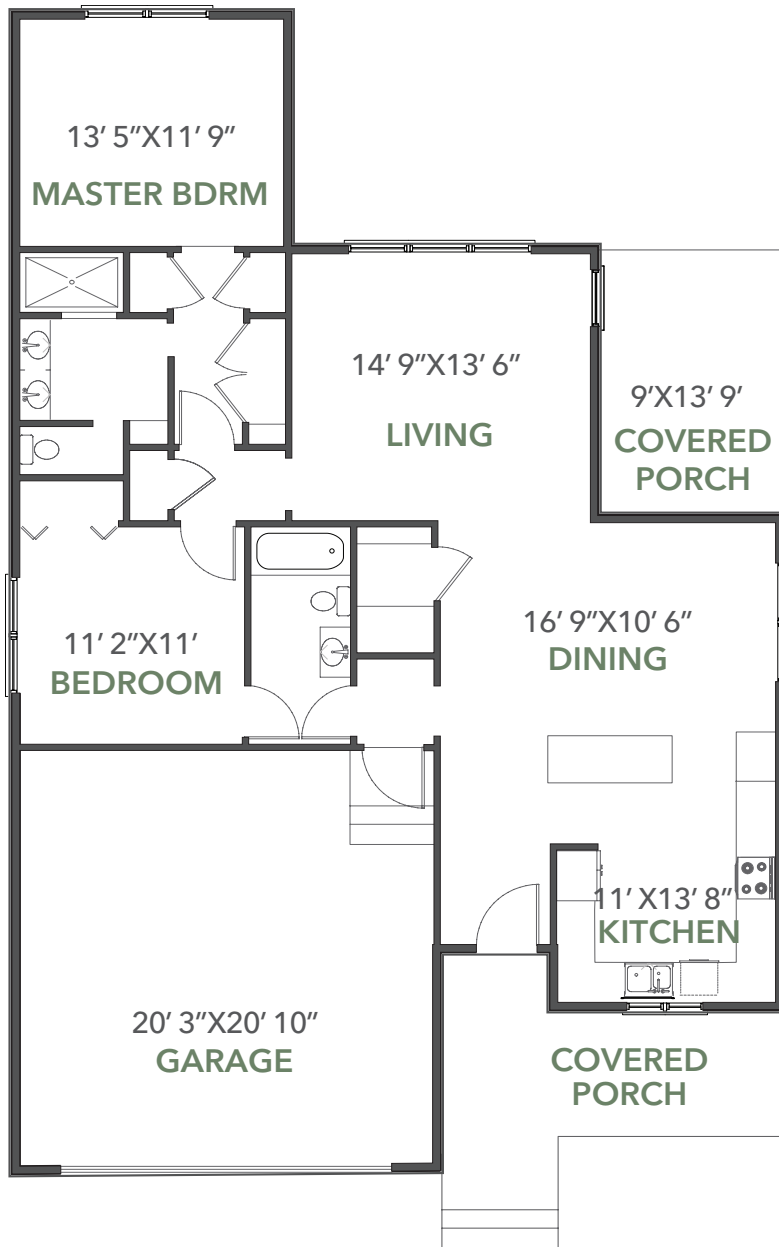
Craftsman Style
2 Bedrooms
2 Bathrooms
2 Car Garage

HEATED SQUARE FOOTAGE

1,220 Sq. Ft.

OVERALL DIMENSIONS

38' 0" x 60' 8"



SPECIFICATIONS

- 1,220 heated Sq. Ft. all on one level
- 2 bedrooms, 2 baths
- Gas fireplace
- Tiled master bath shower
- Attached 2 car garage

EXTERIOR FEATURES

- Jeld-Wen low maintenance windows
- Double hung windows makes cleaning easy
- Low maintenance cement siding
- Low maintenance exterior trim
- Large covered porch on front & rear
- Stained cedar shakes
- Fiberglass doors for easy maintenance

INTERIOR FEATURES

- 9' ceilings throughout
- Large open kitchen with island
- Open floor plan
- Granite tops in kitchen & all baths
- Full tile shower in master
- Vaulted Ceiling in Master bedroom
- Vaulted Ceiling in Living
- Hardwood floors in main living areas
- High quality carpet in bedrooms

*Plan renderings may appear different from scaled drawings.



Minutes from historic downtown Hendersonville and only a short drive from Lake Lure, is Vista at Blacksmith Run— an exclusive Western North Carolina mountain property designed for residential development. Blacksmith Run's secluded mountain lifestyle and four season climate turns an ordinary day into an unforgettable experience. With convenient access to all of Western North Carolina's treasures, this quiet mountain property was developed for those who appreciate the best that life has to offer.

DESCRIPTION

Cottage Style
3 Bedrooms
2 Baths
2 Car Garage

SQUARE FOOTAGE

Total: 1,264 Sq. Ft.
Garage: 425 Sq. Ft.
Covered Porch: 96 Sq. Ft.
Entry Porch: 90 Sq. Ft.

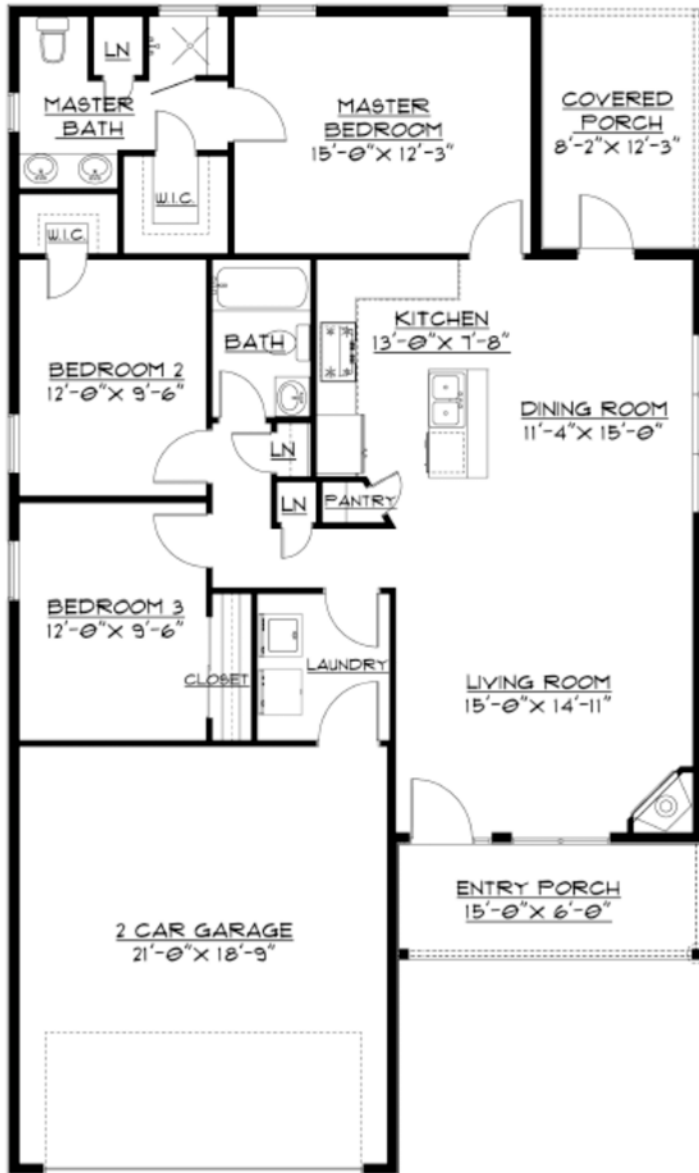
www.vistadevelopers.com

On-Site Real Estate Discovery Center

141 Black Iron Lane, Hendersonville, NC 28792
828-685-3818

Vista Developers, LLC.

525 N Main St, Hendersonville, NC 28792
828-698-2400



*Plan renderings may appear different from scaled drawings.

EXTERIOR FEATURES

- Jeld Wen Double Hung Low Maintenance Windows. Easy Maint. Grid between the glass. Tilt sash removable.
- Low Maint. Cement Siding
- Fiberglass Exterior Doors.
- 2x6 Exterior Wall
- Lifetime Warranty on Asphalt Shingles

INTERIOR FEATURES

- 9' Ceilings w/ smooth Finish
- All wood cabinets with solid maple dovetail drawers and soft close hinges/slides
- Granite counter tops
- Quality Plumbing fixtures
- Raised height elongated bowl toilets
- Hardwood Flooring in Main Areas
- Ceramic Tile Flooring in all wet areas
- Tile Shower enclosure in Master Bath
- Carpet in Bedrooms
- Interior Trim: 3 1/4" Casing and wide 5 1/4" Base molding standard
- Walls to have two coats of paint. Walls flat finish and Trim semi-gloss.
- Solid shelving/wire in closets

HVAC & Electrical

- 13 SEER Heat Pump w/ dual zoning where applicable
- Ceiling fans provided in all Bedrooms and covered deck areas. Light & Fan switched separately.
- Stainless Whirlpool all Electric Appliances
- Lighting package to include recessed kitchen lights and pendant lighting over bar/island. Attractive Standard lighting packages.
- Convenient floor outlets in Living Room.
- 36" ventless gas fireplace with mantle and stone face finishes
- Satin nickel, chrome, oil rubbed bronze finishes available for all hardware. Includes towel bars and toilet paper holders for baths.



Minutes from historic downtown Hendersonville and only a short drive from Lake Lure, is Vista at Blacksmith Run— an exclusive Western North Carolina mountain property designed for residential development. Blacksmith Run's secluded mountain lifestyle and four season climate turns an ordinary day into an unforgettable experience. With convenient access to all of Western North Carolina's treasures, this quiet mountain property was developed for those who appreciate the best that life has to offer.

DESCRIPTION

Cottage Style
3 Bedrooms
2 Baths
2 Car Garage

SQUARE FOOTAGE

Total Sq Ft: 1,374 Sq. Ft.
Garage: 500 Sq. Ft.
Deck: 110 Sq. Ft.

www.vistadevelopers.com



*Plan renderings may appear different from scaled drawings.

Home Exterior

- Jeld Wen Double Hung Low Maintenance Windows. Easy Maint. Grid between the glass. Tilt sash removable.
- Low Maint. Cement Siding
- Fiberglass Exterior Doors.
- 2x6 Exterior Wall
- Lifetime Warranty on Asphalt Shingles

Home Interior

- 9' Ceilings w/ smooth Finish
- Vaulted Great Room
- Tray Ceiling in Master BR
- All wood cabinets with solid maple dovetail drawers and soft close hinges/slides.
- Granite counter tops
- Quality Plumbing fixtures.
- Raised height elongated bowl toilets.
- Hardwood Flooring in Main Areas
- Ceramic Tile Flooring in all wet areas
- Tile Shower enclosure in Master Bath.
- Carpet in Bedrooms
- Interior Trim: 3 1/4" Casing and wide 5 1/4" Base molding standard.
- Walls to have two coats of paint. Walls flat finish and Trim semi-gloss.
- Wire shelving in closets

HVAC & Electrical

- 14 SEER Heat Pump w/ dual zoning where applicable
- Ceiling fans provided in all Bedrooms and covered deck areas. Light & Fan switched separately.
- Stainless Whirlpool all Electric Appliances
- Attractive Standard lighting packages.
- Convenient floor outlets in Living Room.
- 36" ventless gas fireplace with mantle and stone face finishes
- Satin nickel, chrome, oil rubbed bronze finishes available for all hardware. Includes towel bars and toilet paper holders for baths.



Minutes from historic downtown Hendersonville and only a short drive from Lake Lure, is Vista at Blacksmith Run— an exclusive Western North Carolina mountain property designed for residential development. Blacksmith Run's secluded mountain lifestyle and four season climate turns an ordinary day into an unforgettable experience. With convenient access to all of Western North Carolina's treasures, this quiet mountain property was developed for those who appreciate the best that life has to offer.

DESCRIPTION

Cottage Style
3 Bedrooms
2 Baths
2 Car Garage

SQUARE FOOTAGE

Total Sq Ft: 1,432 Sq. Ft.
Garage: 420 Sq. Ft.
Deck: 160 Sq. Ft.

www.vistadevelopers.com



Home Exterior

- Jeld Wen Double Hung Low Maintenance Windows. Easy Maint. Grid between the glass. Tilt sash removable.
- Low Maint. Cement Siding
- Fiberglass Exterior Doors.
- 2x6 Exterior Wall
- Lifetime Warranty on Asphalt Shingles

Home Interior

- 9' Ceilings w/ smooth Finish
- Vaulted Great Room
- Tray Ceiling in Master BR
- All wood cabinets with solid maple dovetail drawers and soft close hinges/slides.
- Granite counter tops
- Quality Plumbing fixtures.
- Raised height elongated bowl toilets.
- Hardwood Flooring in Main Areas
- Ceramic Tile Flooring in all wet areas
- Tile Shower enclosure in Master Bath.
- Carpet in Bedrooms
- Interior Trim: 3 1/4" Casing and wide 5 1/4" Base molding standard.
- Walls to have two coats of paint. Walls flat finish and Trim semi-gloss.
- Wire shelving in closets

*Plan renderings may appear different from scaled drawings.

HVAC & Electrical

- 14 SEER Heat Pump w/ dual zoning where applicable
- Ceiling fans provided in all Bedrooms. Light & Fan switched separately.
- Stainless Whirlpool all Electric Appliances
- Attractive Standard lighting packages.
- 36" ventless gas fireplace with mantle and stone face finishes
- Satin nickel, chrome, oil rubbed bronze finishes available for all hardware. Includes towel bars and toilet paper holders for baths.



Minutes from historic downtown Hendersonville and only a short drive from Lake Lure, is Vista at Blacksmith Run— an exclusive Western North Carolina mountain property designed for residential development. Blacksmith Run's secluded mountain lifestyle and four season climate turns an ordinary day into an unforgettable experience. With convenient access to all of Western North Carolina's treasures, this quiet mountain property was developed for those who appreciate the best that life has to offer.

DESCRIPTION

Craftsman Style

3 Bedrooms

2 Baths

2 Car Garage

HEATED SQUARE FOOTAGE

1,503 Sq. Ft.

OVERALL DIMENSIONS

38' 0" x 57' 8"

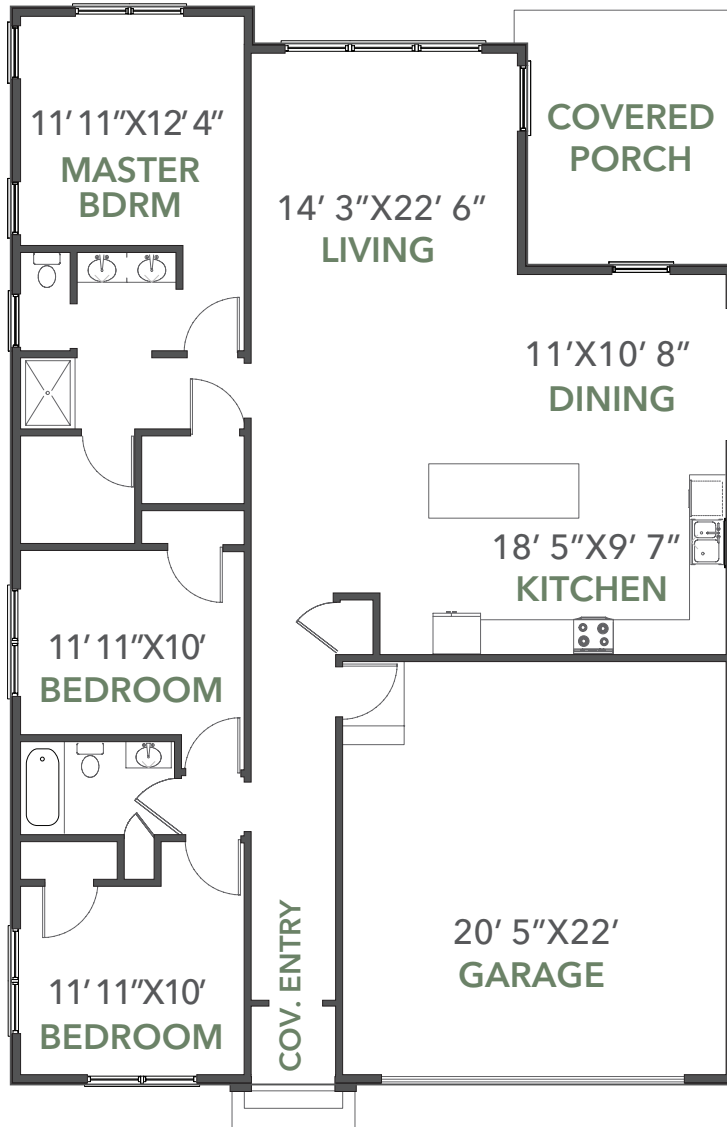
www.vistadevelopers.com

On-Site Real Estate Discovery Center

141 Black Iron Lane, Hendersonville, NC 28792
828-685-3818

Vista Developers, LLC.

525 N Main St, Hendersonville, NC 28792
828-698-2400



SPECIFICATIONS

- 1,503 heated Sq. Ft. all on one level
- 3 bedrooms, 2 baths
- Attached 2 car garage
- Gas fireplace
- Tiled master bath shower

EXTERIOR FEATURES

- Jeld-Wen low maintenance windows
- Double hung windows makes cleaning easy
- Low maintenance cement siding
- Low maintenance exterior trim
- Large covered porch on rear
- Stained cedar shakes
- Fiberglass doors for easy maintenance

INTERIOR FEATURES

- 9' ceilings throughout
- Large open kitchen with island
- Open floor plan
- Granite tops in kitchen & all baths
- Full tile shower in master
- Vaulted Ceiling in Master bedroom
- Vaulted Ceiling in Living
- Hardwood floors in main living areas
- High quality carpet in bedrooms

*Plan renderings may appear different from scaled drawings.



Minutes from historic downtown Hendersonville and only a short drive from Lake Lure, is Vista at Blacksmith Run— an exclusive Western North Carolina mountain property designed for residential development. Blacksmith Run's secluded mountain lifestyle and four season climate turns an ordinary day into an unforgettable experience. With convenient access to all of Western North Carolina's treasures, this quiet mountain property was developed for those who appreciate the best that life has to offer.

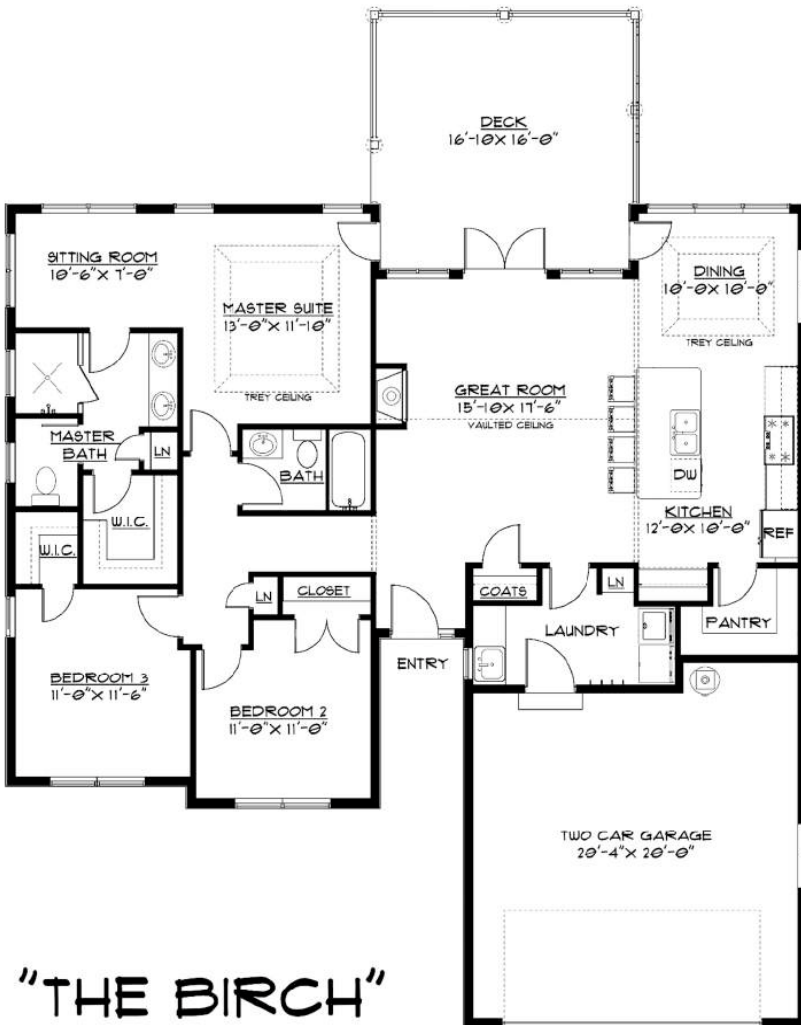
DESCRIPTION

Cottage Style
3 Bedrooms
2 Baths
2 Car Garage

SQUARE FOOTAGE

Total: 1,568 Sq. Ft.
Garage: 400 Sq. Ft.
Deck: 256 Sq. Ft.

www.vistadevelopers.com



"THE BIRCH"

*Plan renderings may appear different from scaled drawings.

Home Exterior

- Jeld Wen Double Hung Low Maintenance Windows. Easy Maint. Grid between the glass. Tilt sash removable.
- Low Maint. Cement Siding
- Fiberglass Exterior Doors.
- 2x6 Exterior Wall
- Lifetime Warranty on Asphalt Shingles

Home Interior

- 9' Ceilings w/ smooth Finish
- Vaulted Great Room
- Tray Ceiling in Master BR
- All wood cabinets with solid maple dovetail drawers and soft close hinges/slides.
- Granite counter tops
- Quality Plumbing fixtures.
- Raised height elongated bowl toilets.
- Hardwood Flooring in Main Areas
- Ceramic Tile Flooring in all wet areas
- Tile Shower enclosure in Master Bath.
- Carpet in Bedrooms
- Interior Trim: 3 1/4" Casing and wide 5 1/4" Base molding standard.
- Walls to have two coats of paint. Walls flat finish and Trim semi-gloss.
- Solid shelving/wire in closets

HVAC & Electrical

- 13 SEER Heat Pump w/ dual zoning where applicable
- Ceiling fans provided in all Bedrooms and covered deck areas. Light & Fan switched separately.
- Stainless Whirlpool all Electric Appliances
- Lighting package to include recessed kitchen lights and pendant lighting over bar/island. Attractive Standard lighting packages.
- Convenient floor outlets in Living Room.
- 36" ventless gas fireplace with mantle and stone face finishes
- Satin nickel, chrome, oil rubbed bronze finishes available for all hardware. Includes towel bars and toilet paper holders for baths.



Minutes from historic downtown Hendersonville and only a short drive from Lake Lure, is Vista at Blacksmith Run— an exclusive Western North Carolina mountain property designed for residential development. Blacksmith Run's secluded mountain lifestyle and four season climate turns an ordinary day into an unforgettable experience. With convenient access to all of Western North Carolina's treasures, this quiet mountain property was developed for those who appreciate the best that life has to offer.

DESCRIPTION

3 Bedrooms
2 Baths
2 Car Garage

TOTAL HEATED

1,640 Sq. Ft.

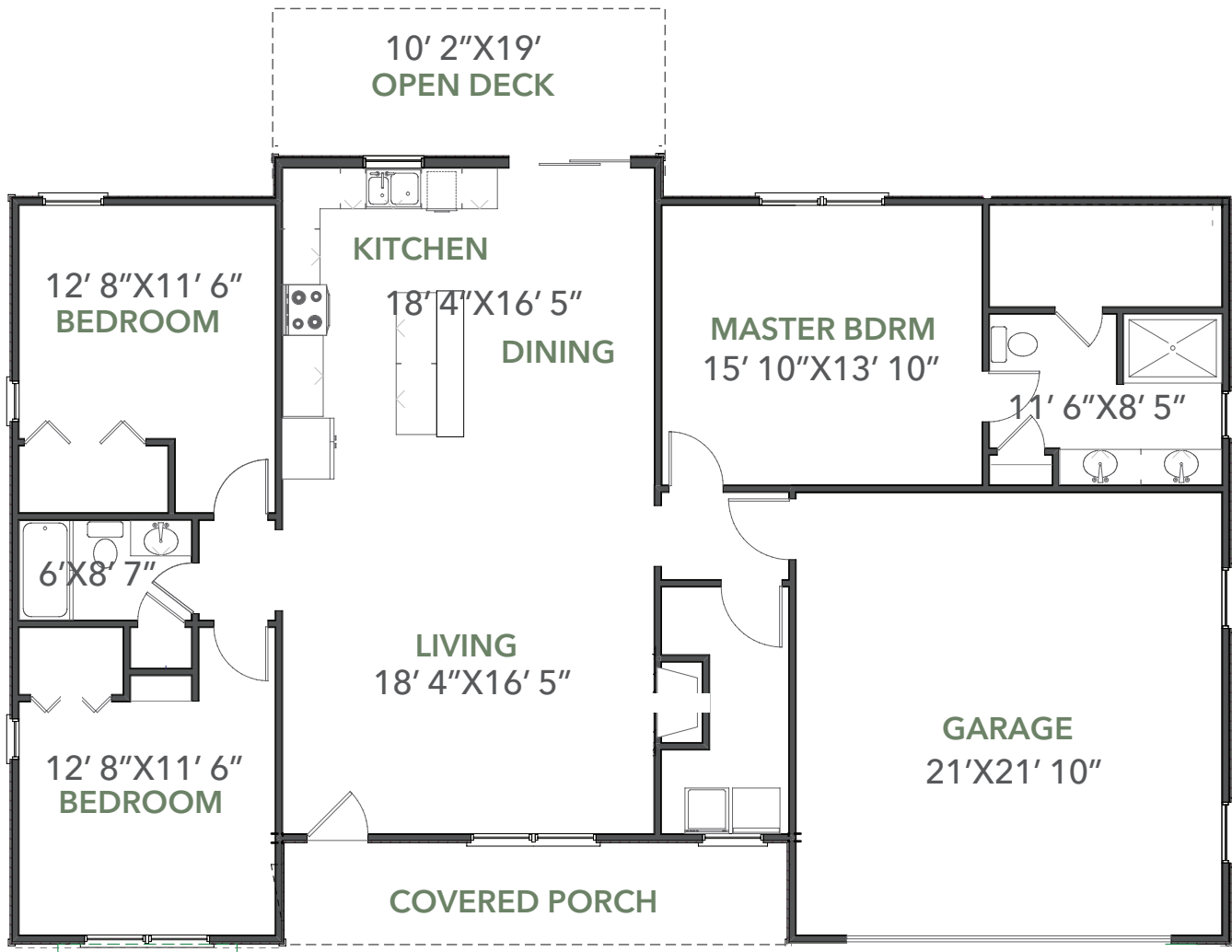
FRONT COVERED PORCH

125 Sq. Ft.

REAR OPEN PORCH

190 Sq. Ft.

www.vistadevelopers.com



*Plan renderings may appear different from scaled drawings.

SPECIFICATIONS

- 1,640 heated Sq. Ft. all on one level
- 3 bedrooms, 2 baths
- Attached 2 car garage
- Gas fireplace
- Tiled master bath shower
- Large open deck on rear

EXTERIOR FEATURES

- Jeld-Wen low maintenance windows
- Double hung windows makes cleaning easy
- Low maintenance cement siding
- Low maintenance exterior trim
- Covered porch on front
- Stained cedar shakes
- Fiberglass doors for easy maintenance

INTERIOR FEATURES

- 9' ceilings in all bedrooms
- 12' ceilings in living, dining and kitchen area
- Open floor plan
- Granite tops in kitchen & all baths
- Full tile shower in master
- Walk-in laundry room
- Hardwood floors in main living areas
- High quality carpet in bedrooms



Minutes from historic downtown Hendersonville and only a short drive from Lake Lure, is Vista at Blacksmith Run— an exclusive Western North Carolina mountain property designed for residential development. Blacksmith Run's secluded mountain lifestyle and four season climate turns an ordinary day into an unforgettable experience. With convenient access to all of Western North Carolina's treasures, this quiet mountain property was developed for those who appreciate the best that life has to offer.

DESCRIPTION

Cottage Style
3 Bedrooms
2 Baths
2 Car Garage

SQUARE FOOTAGE

Total: 1,795 Sq. Ft.
Garage: 466 Sq. Ft.
Covered Porch: 181 Sq. Ft.
Entry Porch: 90 Sq. Ft.

www.vistadevelopers.com



*Plan renderings may appear different from scaled drawings.

Home Exterior

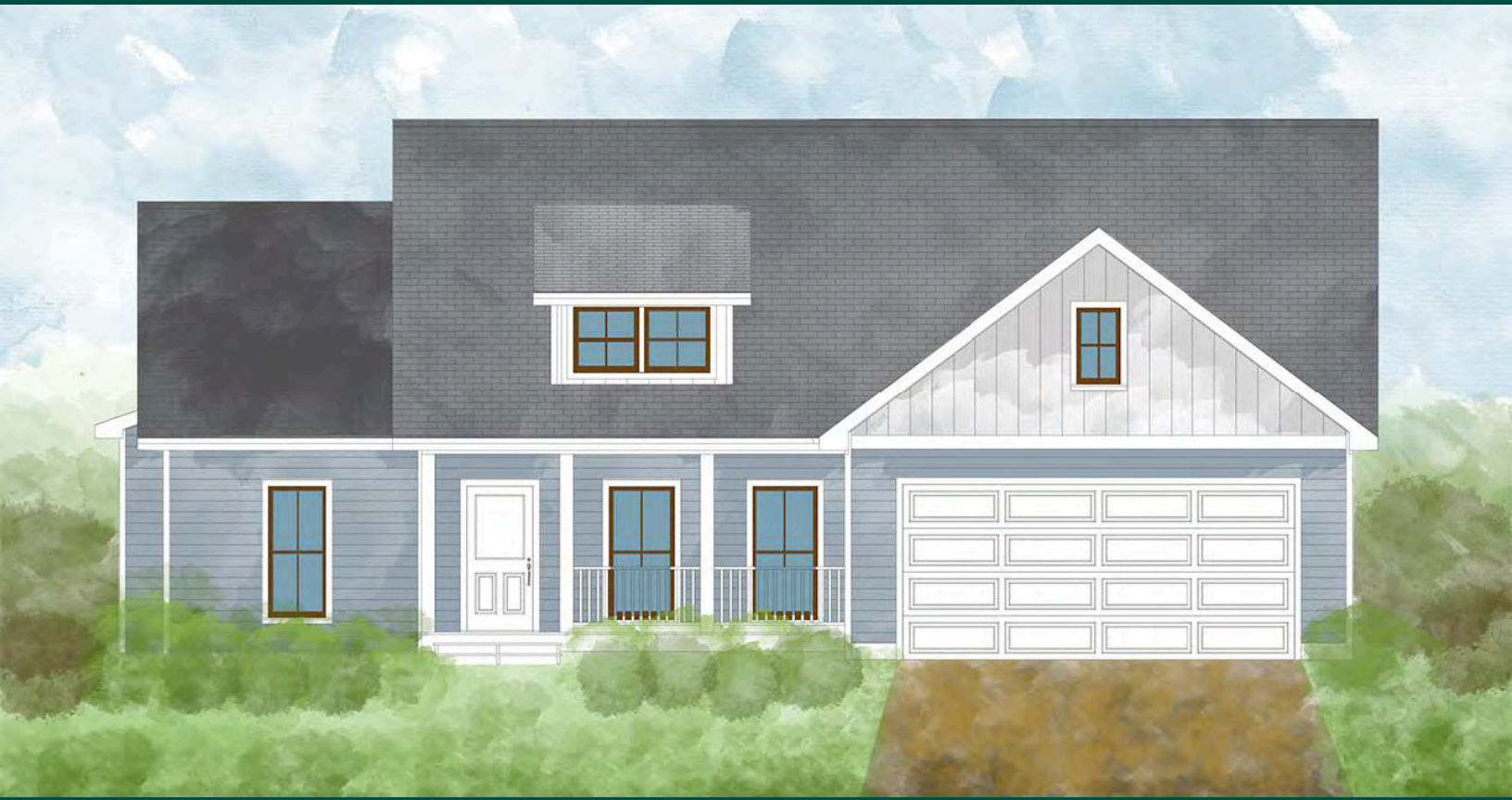
- Jeld Wen Double Hung Low Maintenance Windows. Easy Maint. Grid between the glass. Tilt sash removable.
- Low Maint. Cement Siding
- Fiberglass Exterior Doors.
- 2x6 Exterior Wall
- Lifetime Warranty on Asphalt Shingles

Home Interior

- 9' Ceilings w/ smooth Finish
- All wood cabinets with solid maple dovetail drawers and soft close hinges/slides.
- Granite counter tops
- Quality Plumbing fixtures.
- Raised height elongated bowl toilets.
- Hardwood Flooring in Main Areas
- Ceramic Tile Flooring in all wet areas
- Tile Shower enclosure in Master Bath.
- Carpet in Bedrooms
- Interior Trim: 3 1/4" Casing and wide 5 1/4" Base molding standard.
- Walls to have two coats of paint. Walls flat finish and Trim semi-gloss.
- Solid shelving/wire in closets

HVAC & Electrical

- 13 SEER Heat Pump w/ dual zoning where applicable
- Ceiling fans provided in all Bedrooms and covered deck areas. Light & Fan switched separately.
- Stainless Whirlpool all Electric Appliances
- Lighting package to include recessed kitchen lights and pendant lighting over bar/island. Attractive Standard lighting packages.
- Convenient floor outlets in Living Room.
- 36" ventless gas fireplace with mantle and stone face finishes
- Satin nickel, chrome, oil rubbed bronze finishes available for all hardware. Includes towel bars and toilet paper holders for baths.



Minutes from historic downtown Hendersonville and only a short drive from Lake Lure, is Vista at Blacksmith Run— an exclusive Western North Carolina mountain property designed for residential development. Blacksmith Run's secluded mountain lifestyle and four season climate turns an ordinary day into an unforgettable experience. With convenient access to all of Western North Carolina's treasures, this quiet mountain property was developed for those who appreciate the best that life has to offer.

DESCRIPTION

3 Bedrooms
2 Baths

TOTAL HEATED

1,617 Sq. Ft.

FRONT COVERED PORCH

98 Sq. Ft.

DECK

108 Sq. Ft.

www.vistadevelopers.com



*Plan renderings may appear different from scaled drawings.

SPECIFICATIONS

- 1,617 heated Sq. Ft.
- 3 bedrooms, 2 baths
- Large covered deck
- Gas fireplace

EXTERIOR FEATURES

- Low maintenance cement siding
- Composite trim
- Architectural siding
- Jeld-Wen vinyl windows
- Low maintenance fiberglass exterior doors

INTERIOR FEATURES

- Quality hardwood flooring in all the common areas
- 9' ceilings throughout
- Granite counter tops
- Large laundry and mud room



Minutes from historic downtown Hendersonville and only a short drive from Lake Lure, is Vista at Blacksmith Run— an exclusive Western North Carolina mountain property designed for residential development. Blacksmith Run's secluded mountain lifestyle and four season climate turns an ordinary day into an unforgettable experience. With convenient access to all of Western North Carolina's treasures, this quiet mountain property was developed for those who appreciate the best that life has to offer.

www.vistadevelopers.com

DESCRIPTION

3 Bedrooms

2 Baths

TOTAL HEATED

1,963 Sq. Ft.

MAIN FLOOR

1,683 SQ. FT.

UPPER FLOOR

280 SQ. FT.

ENTRY PORCH

75 SQ. FT.

DECK

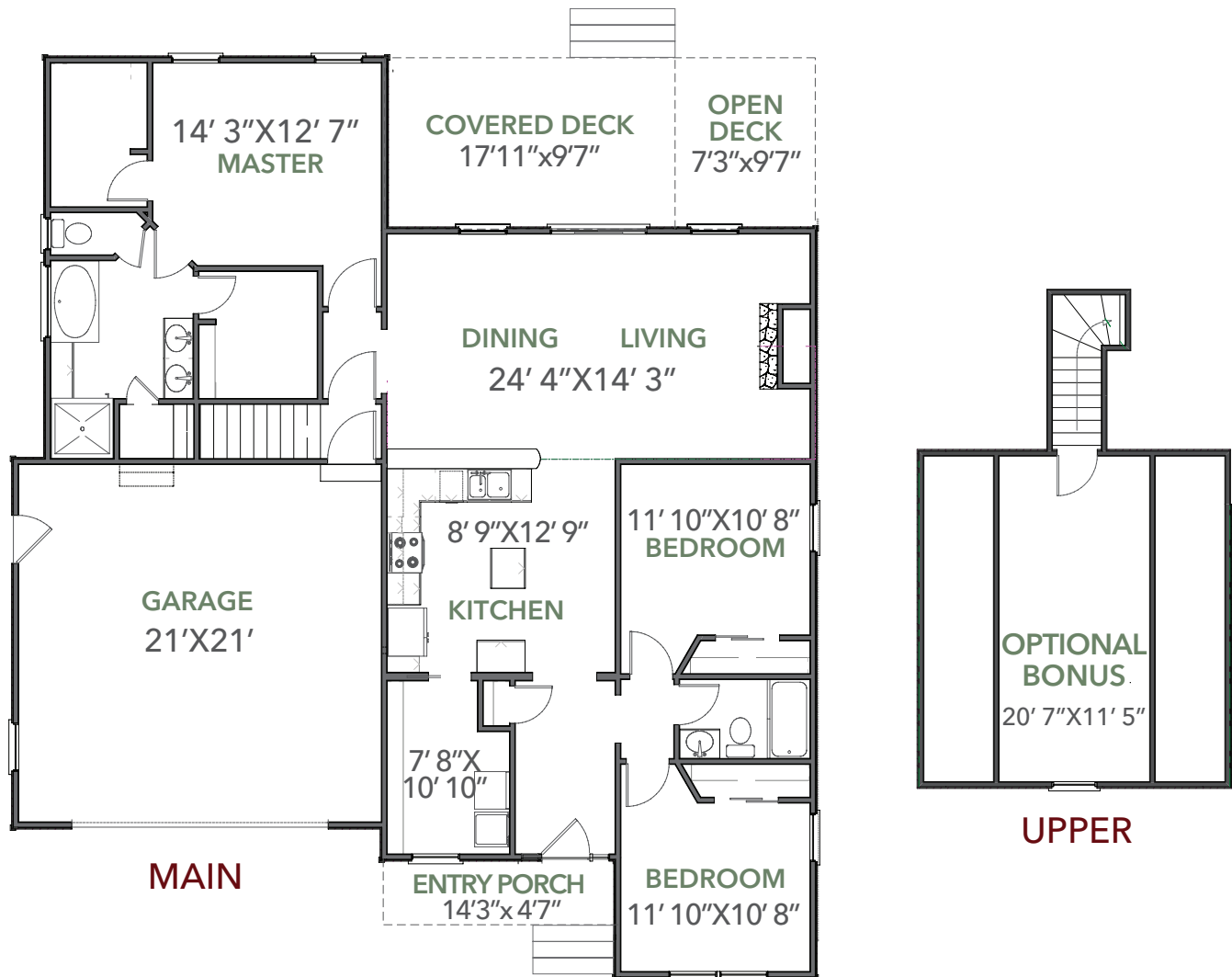
258 SQ. FT.

On-Site Real Estate Discovery Center

141 Black Iron Lane, Hendersonville, NC 28792
828-685-3818

Vista Developers, LLC.

525 N Main St, Hendersonville, NC 28792
828-698-2400



*Plan renderings may appear different from scaled drawings.

SPECIFICATIONS

- 3 bedrooms, 2 baths on main level
- Optional bonus room above garage
- Attached 2 car garage
- Gas fireplace
- Tiled master bath shower

EXTERIOR FEATURES

- Jeld-Wen low maintenance windows
- Double hung windows makes cleaning easy
- Low maintenance cement siding
- Low maintenance exterior trim
- Large covered porch on front & rear
- Stained cedar shakes
- Fiberglass doors for easy maintenance
- Rock details on front of home

INTERIOR FEATURES

- 9' interior ceilings
- Large vaulted ceilings on main
- Raised granite bar top in kitchen
- Granite tops in kitchen & all baths
- Large laundry and pantry area
- Hardwood floors in main living areas
- High quality carpet in bedrooms

On-Site Real Estate Discovery Center

141 Black Iron Lane, Hendersonville, NC 28792
828-685-3818

Vista Developers, LLC.

525 N Main St, Hendersonville, NC 28792
828-698-2400



Minutes from historic downtown Hendersonville and only a short drive from Lake Lure, is Vista at Blacksmith Run— an exclusive Western North Carolina mountain property designed for residential development. Blacksmith Run's secluded mountain lifestyle and four season climate turns an ordinary day into an unforgettable experience. With convenient access to all of Western North Carolina's treasures, this quiet mountain property was developed for those who appreciate the best that life has to offer.

DESCRIPTION

3 Bedrooms

2 Baths

TOTAL HEATED

1,792 Sq. Ft.

W/ Optional Bonus Room:

2,167 SQ. FT.

ENTRY PORCH

68 SQ. FT.

DECK

205 SQ. FT.

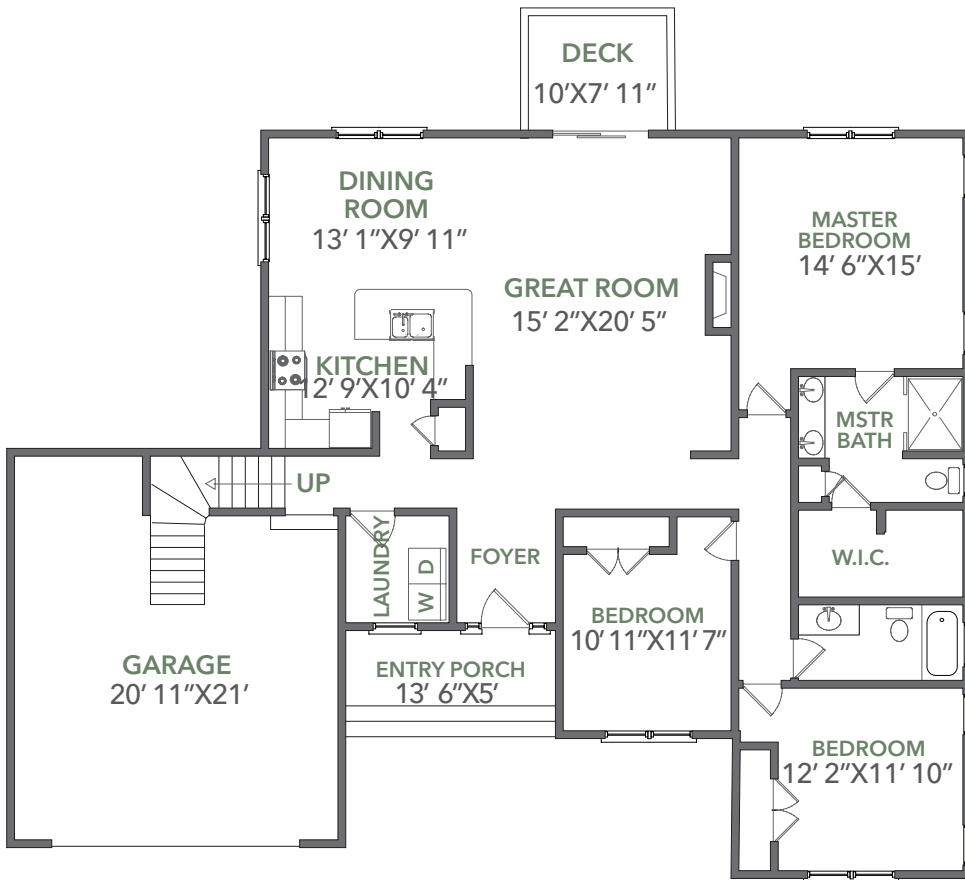
www.vistadevelopers.com

On-Site Real Estate Discovery Center

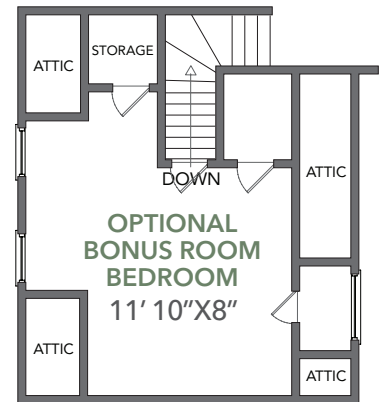
141 Black Iron Lane, Hendersonville, NC 28792
828-685-3818

Vista Developers, LLC.

525 N Main St, Hendersonville, NC 28792
828-698-2400



MAIN



UPPER

*Plan renderings may appear different from scaled drawings.

SPECIFICATIONS

- 3 bedrooms, 2 baths on main level
- Optional bonus room above garage
- Attached 2 car garage
- Large Covered Porch
- Propane fireplace on main level

EXTERIOR FEATURES

- Jeld-Wen low maintenance windows
- Double hung windows makes cleaning easy
- Low maintenance cement siding and composite trim
- Covered porch on front & rear
- Stained cedar shakes
- Fiberglass doors for easy maintenance

INTERIOR FEATURES

- 9' interior ceilings
- Large vaulted ceilings
- Granite countertops
- Hardwood floors in common areas
- Quality carpet in bedrooms and optional bonus
- Tile bathrooms

On-Site Real Estate Discovery Center

141 Black Iron Lane, Hendersonville, NC 28792
828-685-3818

Vista Developers, LLC.

525 N Main St, Hendersonville, NC 28792
828-698-2400



Minutes from historic downtown Hendersonville and only a short drive from Lake Lure, is Vista at Blacksmith Run— an exclusive Western North Carolina mountain property designed for residential development. Blacksmith Run's secluded mountain lifestyle and four season climate turns an ordinary day into an unforgettable experience. With convenient access to all of Western North Carolina's treasures, this quiet mountain property was developed for those who appreciate the best that life has to offer.

DESCRIPTION

3 Bedrooms

2 Baths

TOTAL HEATED

1,910 Sq. Ft.

ENTRY PORCH

108 SQ. FT.

DECK

165 SQ. FT.

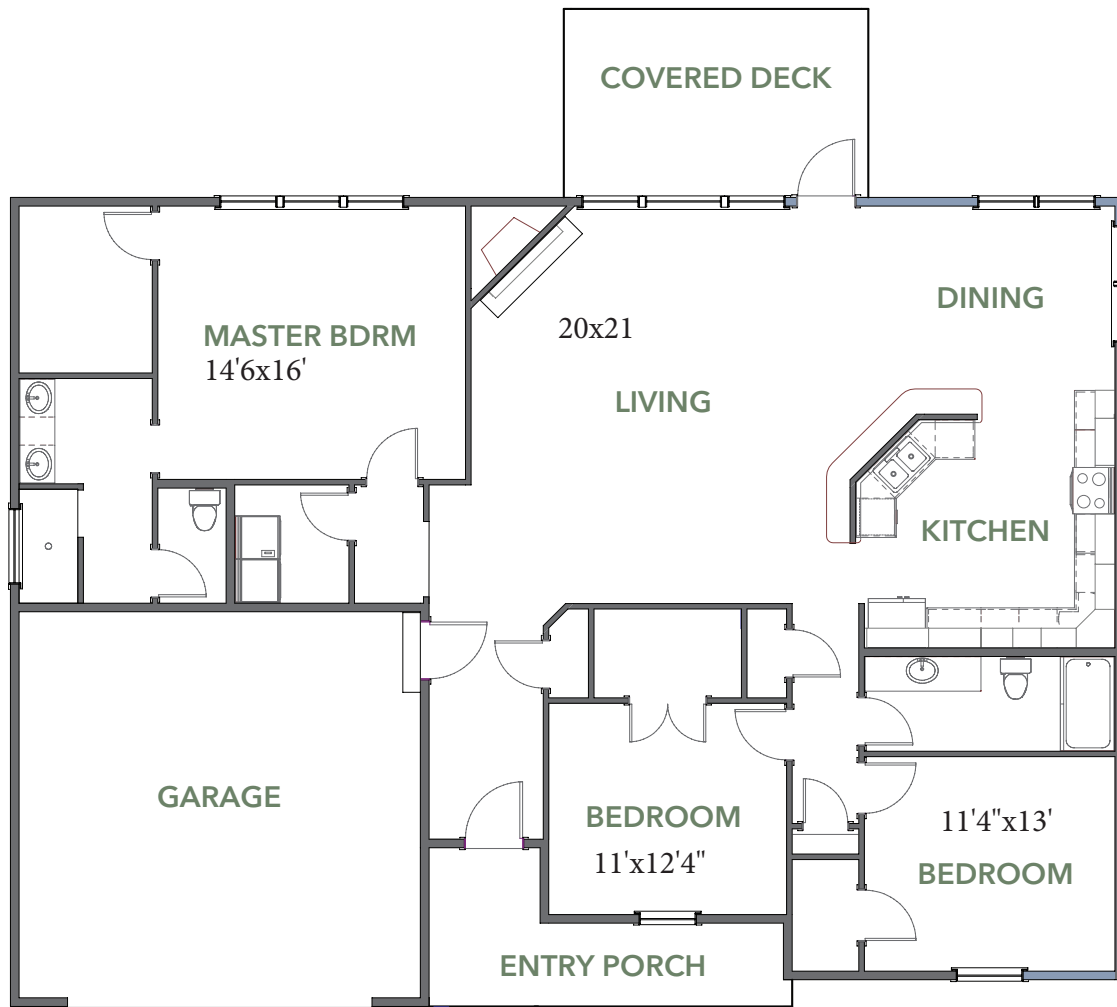
www.vistadevelopers.com

On-Site Real Estate Discovery Center

141 Black Iron Lane, Hendersonville, NC 28792
828-685-3818

Vista Developers, LLC.

525 N Main St, Hendersonville, NC 28792
828-698-2400



*Plan renderings may appear different from scaled drawings.

SPECIFICATIONS

- 3 bedrooms, 2 baths on main level
- Attached 2 car garage
- Gas fireplace
- Tiled master bath shower

EXTERIOR FEATURES

- Jeld-Wen low maintenance windows
- Double hung windows makes cleaning easy
- Low maintenance cement siding
- Low maintenance exterior trim
- Large covered porch on front & rear
- Stained cedar shakes
- Fiberglass doors for easy maintenance
- Rock details on front of home

INTERIOR FEATURES

- 9' interior ceilings
- Granite tops in kitchen & all baths
- Large laundry and pantry area
- Hardwood floors in main living areas
- Quality carpet in bedrooms



Minutes from historic downtown Hendersonville and only a short drive from Lake Lure, is Vista at Blacksmith Run— an exclusive Western North Carolina mountain property designed for residential development. Blacksmith Run's secluded mountain lifestyle and four season climate turns an ordinary day into an unforgettable experience. With convenient access to all of Western North Carolina's treasures, this quiet mountain property was developed for those who appreciate the best that life has to offer.

DESCRIPTION

Craftsman Style

3 Bedrooms

2 Bathrooms

2 Car Garage

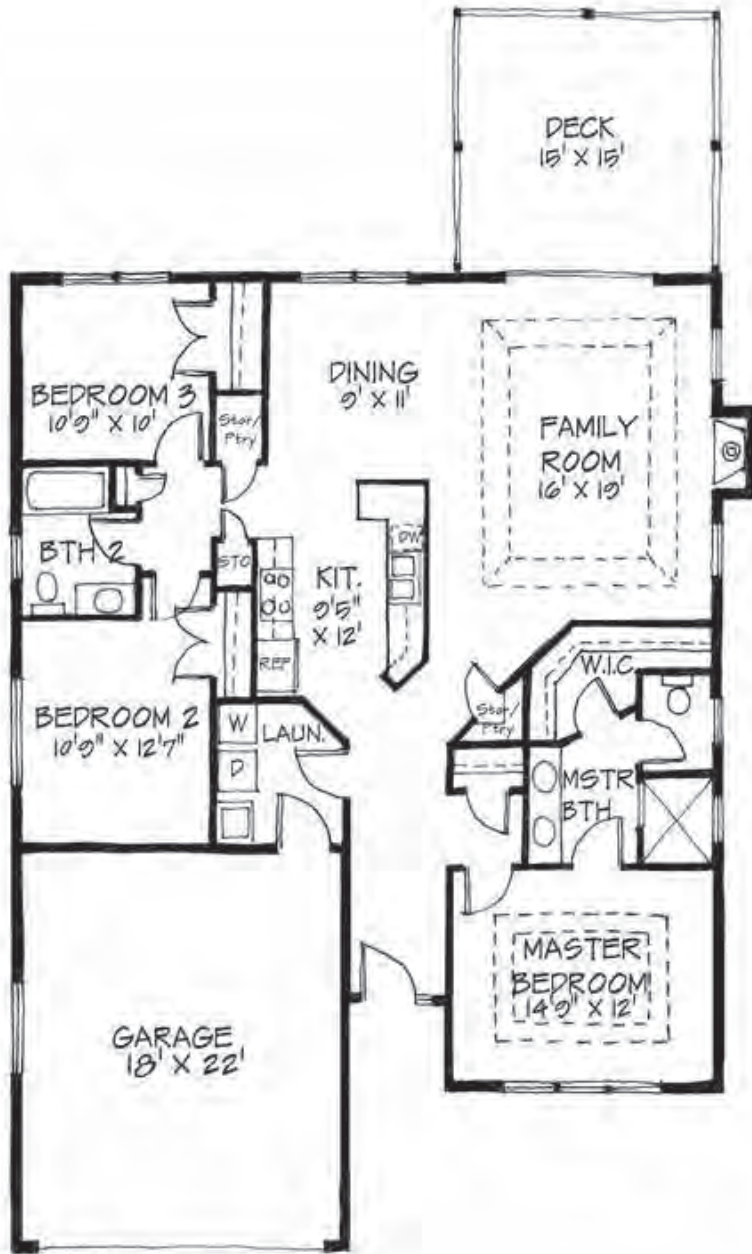
HEATED SQUARE FOOTAGE

1,580 Sq. Ft.

OVERALL DIMENSIONS

40' x 55'

www.vistadevelopers.com



SPECIFICATIONS

- 1,580 heated Sq. Ft. all on one level
- 3 bedrooms, 2 baths
- Attached 2 car garage
- Gas fireplace
- Tiled master bath shower

EXTERIOR FEATURES

- Jeld-Wen low maintenance windows
- Stone veneer accents
- Low maintenance cement siding
- Low maintenance exterior trim
- Large deck off family room
- Fiberglass doors for easy maintenance

INTERIOR FEATURES

- 9' ceilings throughout
- Large open kitchen with island
- Open floor plan
- Granite tops in kitchen & all baths
- Full tile shower in master
- Tray ceiling in Master bedroom
- Tray ceiling in Family room
- Hardwood floors in main living areas
- High quality carpet in bedrooms

*Plan renderings may appear different from scaled drawings.



Minutes from historic downtown Hendersonville and only a short drive from Lake Lure, is Vista at Blacksmith Run— an exclusive Western North Carolina mountain property designed for residential development. Blacksmith Run's secluded mountain lifestyle and four season climate turns an ordinary day into an unforgettable experience. With convenient access to all of Western North Carolina's treasures, this quiet mountain property was developed for those who appreciate the best that life has to offer.

DESCRIPTION

Cottage Style

3 Bedrooms

2 Baths

2 Car Garage

*Optional Bonus Room/ 4th Bedroom available.

SQUARE FOOTAGE

Main: 1,454 Sq. Ft.

*Bonus Room: 193 Sq. Ft.

Total Finished: 1,647 Sq. Ft.

Garage: 450 Sq. Ft.

Rear Porch: 76 Sq. Ft.

Covered Porch: 85 Sq. Ft.

www.vistadevelopers.com

On-Site Real Estate Discovery Center

141 Black Iron Lane, Hendersonville, NC 28792
828-685-3818

Vista Developers, LLC.

525 N Main St, Hendersonville, NC 28792
828-698-2400



*Plan renderings may appear different from scaled drawings.

HVAC & Electrical

- 13 SEER Heat Pump w/ dual zoning where applicable
- Ceiling fans provided in all Bedrooms and covered deck areas.
Light & Fan switched separately.
- Stainless all Electric Appliances
- Lighting package to include recessed kitchen lights and pendant lighting over bar/island. Attractive Standard lighting packages.
- Convenient floor outlets in Living Room.
- 36" ventless gas fireplace with mantle and stone face finishes
- Satin nickel, chrome, oil rubbed bronze finishes available for all hardware. Includes towel bars and toilet paper holders for baths.

Home Exterior

- Jeld Wen Double Hung Low Maintenance Windows. Easy Maint. Grid between the glass. Tilt sash removable.
- Low Maint. Cement Siding
- Fiberglass Exterior Doors.
- ZIP Wall exterior sheathing
- 2x6 Exterior Wall
- Lifetime Warranty on Asphalt Shingles

Home Interior

- 9' Ceilings w/ smooth Finish
- Tray Ceiling standard in DR
- Great Room Vaulted Ceiling.
- All wood cabinets with solid maple dovetail drawers and soft close hinges/slides. Crown molding.
36"-42" Wall cabinets.
- Granite counter tops
- Quality Plumbing fixtures. Raised height elongated bowl toilets.
- Hardwood Flooring in Main Areas
- Ceramic Tile Flooring in all wet areas
- Tile Shower enclosure in Master Bath.
- Curb less shower entry for easy access.
- ADA blocking for future grab bars.
- Carpet in Bedrooms
- Interior Trim: Walls to have two coats of paint. Walls flat finish and Trim semi-gloss. 3 1/4" Casing and wide 5 1/4" Base molding standard.
- Solid shelving/wire in closets



Minutes from historic downtown Hendersonville and only a short drive from Lake Lure, is Vista at Blacksmith Run— an exclusive Western North Carolina mountain property designed for residential development. Blacksmith Run's secluded mountain lifestyle and four season climate turns an ordinary day into an unforgettable experience. With convenient access to all of Western North Carolina's treasures, this quiet mountain property was developed for those who appreciate the best that life has to offer.

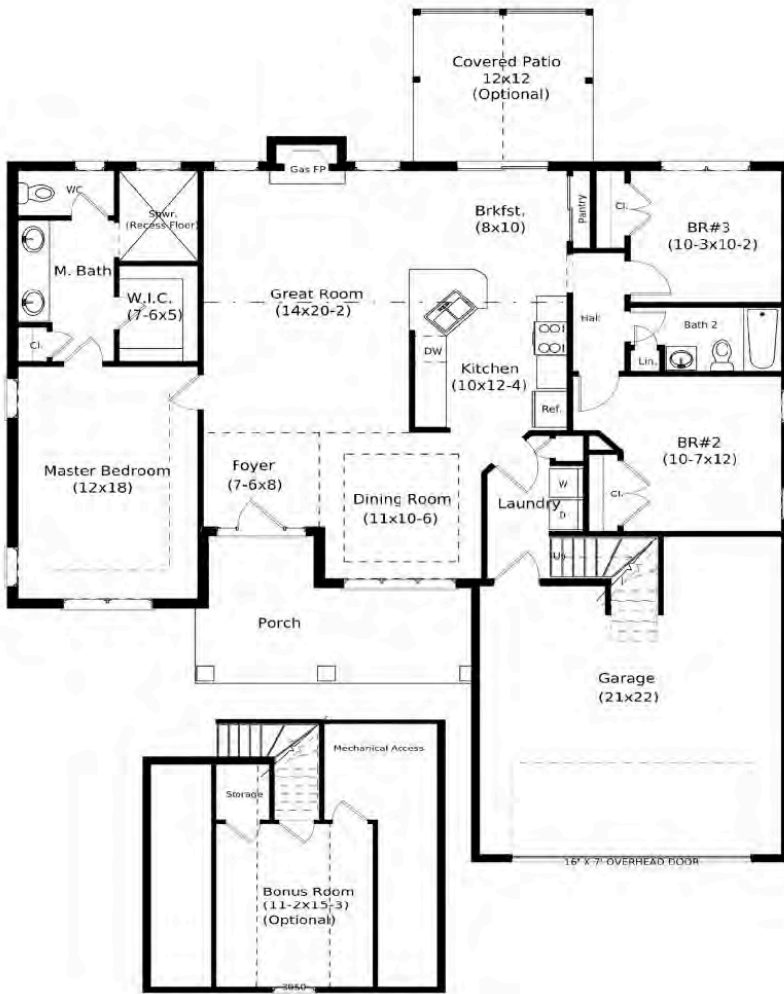
DESCRIPTION

Cottage Style
3 Bedrooms
2 Baths
2 Car Garage
*Optional Bonus Room/ 4th Bedroom available.

SQUARE FOOTAGE

Main: 1,660 Sq. Ft.
*Bonus Room: 223 Sq. Ft.
Total Finished: 1,883 Sq. Ft.
Garage: 462 Sq. Ft.
*Covered Deck: 144 Sq. Ft.
Covered Porch: 170 Sq. Ft.

www.vistadevelopers.com



*Plan renderings may appear different from scaled drawings.

HVAC & Electrical

- 13 SEER Heat Pump w/ dual zoning where applicable
- Ceiling fans provided in all Bedrooms and covered deck areas. Light & Fan switched separately.
- Stainless all Electric Appliances
- Lighting package to include recessed kitchen lights and pendant lighting over bar/island. Attractive Standard lighting packages.
- Convenient floor outlets in Living Room.
- 36" ventless gas fireplace with mantle and stone face finishes
- Satin nickel, chrome, oil rubbed bronze finishes available for all hardware. Includes towel bars and toilet paper holders for baths.

Home Exterior

- Jeld Wen Double Hung Low Maintenance Windows. Easy Maint. Grid between the glass. Tilt sash removable.
- Low Maint. Cement Siding
- Fiberglass Exterior Doors.
- ZIP Wall exterior sheathing
- 2x6 Exterior Wall
- Lifetime Warranty on Asphalt Shingles

Home Interior

- 9' Ceilings w/ smooth Finish
- Tray Ceiling standard in DR
- Great Room Vaulted Ceiling.
- All wood cabinets with solid maple dovetail drawers and soft close hinges/slides. Crown molding. 36"-42" Wall cabinets.
- Granite counter tops
- Quality Plumbing fixtures. Raised height elongated bowl toilets.
- Hardwood Flooring in Main Areas
- Ceramic Tile Flooring in all wet areas
- Tile Shower enclosure in Master Bath.
- Curb less shower entry for easy access.
- ADA blocking for future grab bars.
- Carpet in Bedrooms
- Interior Trim: Walls to have two coats of paint. Walls flat finish and Trim semi-gloss. 3 1/4" Casing and wide 5 1/4" Base molding standard.
- Solid shelving/wire in closets

On-Site Real Estate Discovery Center

141 Black Iron Lane, Hendersonville, NC 28792
828-685-3818

Vista Developers, LLC.

525 N Main St, Hendersonville, NC 28792
828-698-2400



Minutes from historic downtown Hendersonville and only a short drive from Lake Lure, is Vista at Blacksmith Run— an exclusive Western North Carolina mountain property designed for residential development. Blacksmith Run's secluded mountain lifestyle and four season climate turns an ordinary day into an unforgettable experience. With convenient access to all of Western North Carolina's treasures, this quiet mountain property was developed for those who appreciate the best that life has to offer.

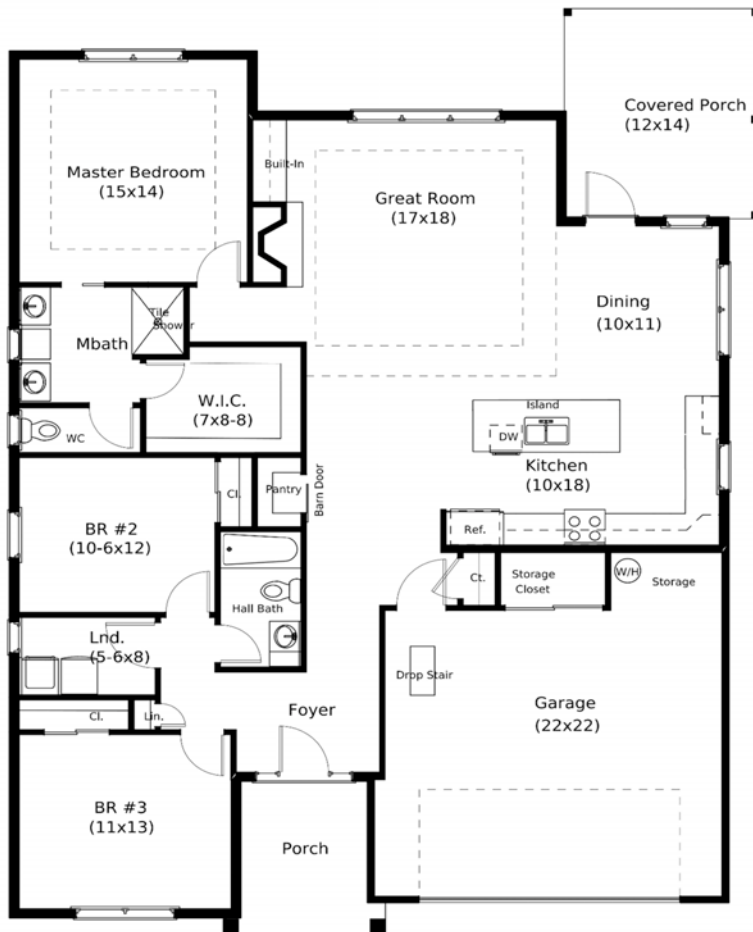
DESCRIPTION

Cottage Style
3 Bedrooms
2 Baths
2 Car Garage

SQUARE FOOTAGE

Main: 1,750 Sq. Ft.
Total Finished: 1,750 Sq. Ft.
Garage: 506 Sq. Ft.
*Covered Deck: 168 Sq. Ft.
Covered Porch: 40 Sq. Ft.

www.vistadevelopers.com



*Plan renderings may appear different from scaled drawings.

HVAC & Electrical

- 13 SEER Heat Pump w/ dual zoning where applicable
- Ceiling fans provided in all Bedrooms and covered deck areas. Light & Fan switched separately.
- Stainless all Electric Appliances
- Lighting package to include recessed kitchen lights and pendant lighting over bar/island. Attractive Standard lighting packages.
- Convenient floor outlets in Living Room.
- 36" ventless gas fireplace with mantle and stone face finishes
- Satin nickel, chrome, oil rubbed bronze finishes available for all hardware. Includes towel bars and toilet paper holders for baths.

Home Exterior

- Jeld Wen Double Hung Low Maintenance Windows. Easy Maint. Grid between the glass. Tilt sash removable.
- Low Maint. Cement Siding
- Fiberglass Exterior Doors.
- ZIP Wall exterior sheathing
- 2x6 Exterior Wall
- Lifetime Warranty on Asphalt Shingles

Home Interior

- 9' Ceilings w/ smooth Finish
- Tray Ceiling standard in Gr & DR
- All wood cabinets with solid maple dovetail drawers and soft close hinges/slides. Crown molding. 36"-42" Wall cabinets.
- Granite counter tops
- Quality Plumbing fixtures. Raised height elongated bowl toilets.
- Hardwood Flooring in Main Areas
- Ceramic Tile Flooring in all wet areas
- Tile Shower enclosure in Master Bath.
- Curb less shower entry for easy access.
- ADA blocking for future grab bars.
- Carpet in Bedrooms
- Interior Trim: Walls to have two coats of paint. Walls flat finish and Trim semi-gloss. 3 1/4" Casing and wide 5 1/4" Base molding standard.
- Barn Door Pantry
- Solid shelving/wire in closets

On-Site Real Estate Discovery Center

141 Black Iron Lane, Hendersonville, NC 28792
828-685-3818

Vista Developers, LLC.

525 N Main St, Hendersonville, NC 28792
828-698-2400



Minutes from historic downtown Hendersonville and only a short drive from Lake Lure, is Vista at Blacksmith Run— an exclusive Western North Carolina mountain property designed for residential development. Blacksmith Run's secluded mountain lifestyle and four season climate turns an ordinary day into an unforgettable experience. With convenient access to all of Western North Carolina's treasures, this quiet mountain property was developed for those who appreciate the best that life has to offer.

DESCRIPTION

Cottage Style

3 Bedrooms

2 Baths

2 Car Garage

*Optional Bonus Room
(4th Bedroom)

SQUARE FOOTAGE

Main: 1,754 Sq. Ft.

*Bonus Room: 288 Sq. Ft.

Total Finished: 2,042 Sq. Ft.

Garage: 476 Sq. Ft.

*Covered Deck: 168 Sq. Ft.

Covered Porch: 94 Sq. Ft.

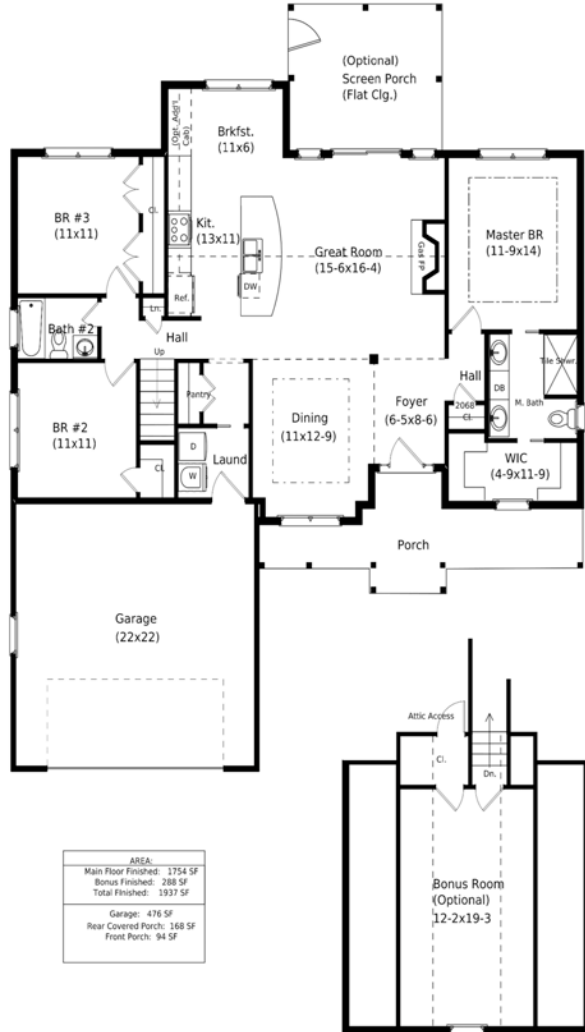
www.vistadevelopers.com

On-Site Real Estate Discovery Center

141 Black Iron Lane, Hendersonville, NC 28792
828-685-3818

Vista Developers, LLC.

525 N Main St, Hendersonville, NC 28792
828-698-2400



*Plan renderings may appear different from scaled drawings.

Home Exterior

- Jeld Wen Double Hung Low Maintenance Windows. Easy Maint. Grid between the glass. Tilt sash removable.
- Low Maint. Cement Siding
- Fiberglass Exterior Doors.
- ZIP Wall exterior sheathing
- 2x6 Exterior Wall
- Lifetime Warranty on Asphalt Shingles

Home Interior

- 9' Ceilings w/ smooth Finish
- Tray Ceiling standard in DR
- Great Room Vaulted Ceiling.
- All wood cabinets with solid maple dovetail drawers and soft close hinges/slides. Crown molding. 36"-42" Wall cabinets.
- Granite counter tops
- Quality Plumbing fixtures. Raised height elongated bowl toilets.
- Hardwood Flooring in Main Areas
- Ceramic Tile Flooring in all wet areas
- Tile Shower enclosure in Master Bath.
- Curb less shower entry for easy access.
- ADA blocking for future grab bars.
- Carpet in Bedrooms
- Interior Trim: Walls to have two coats of paint. Walls flat finish and Trim semi-gloss. 3 1/4" Casing and wide 5 1/4" Base molding standard.
- Solid shelving/wire in closets

HVAC & Electrical

- 13 SEER Heat Pump w/ dual zoning where applicable
- Ceiling fans provided in all Bedrooms and covered deck areas. Light & Fan switched separately.
- Stainless all Electric Appliances
- Lighting package to include recessed kitchen lights and pendant lighting over bar/island. Attractive Standard lighting packages.
- Convenient floor outlets in Living Room.
- 36" ventless gas fireplace with mantle and stone face finishes
- Satin nickel, chrome, oil rubbed bronze finishes available for all hardware. Includes towel bars and toilet paper holders for baths.

On-Site Real Estate Discovery Center

141 Black Iron Lane, Hendersonville, NC 28792
828-685-3818

Vista Developers, LLC.

525 N Main St, Hendersonville, NC 28792
828-698-2400



Minutes from historic downtown Hendersonville and only a short drive from Lake Lure, is Vista at Blacksmith Run— an exclusive Western North Carolina mountain property designed for residential development. Blacksmith Run's secluded mountain lifestyle and four season climate turns an ordinary day into an unforgettable experience. With convenient access to all of Western North Carolina's treasures, this quiet mountain property was developed for those who appreciate the best that life has to offer.

DESCRIPTION

Cottage Style
4 Bedrooms
3 Baths
2 Car Garage

SQUARE FOOTAGE

Main: 1,756 Sq. Ft.
Bonus Room: 480 Sq. Ft.
Total Finished: 2,236 Sq. Ft.
Garage: 550 Sq. Ft.
*Covered Deck: 192 Sq. Ft.
Covered Porch: 168 Sq. Ft.

www.vistadevelopers.com



*Plan renderings may appear different from scaled drawings.

HVAC & Electrical

- 14 SEER Heat Pump w/ dual zoning where applicable
- Ceiling fans provided in all Bedrooms and covered deck areas. Light & Fan switched separately.
- Stainless all Electric Appliances
- Lighting package to include recessed kitchen lights and pendant lighting over bar/island. Attractive Standard lighting packages.
- Convenient floor outlets in Living Room.
- 36" ventless gas fireplace with mantle and stone face finishes
- Satin nickel, chrome, oil rubbed bronze finishes available for all hardware. Includes towel bars and toilet paper holders for baths.

Home Exterior

- Jeld Wen Double Hung Low Maintenance Windows. Easy Maint. Grid between the glass. Tilt sash removable.
- Low Maint. Cement Siding
- Fiberglass Exterior Doors.
- ZIP Wall exterior sheathing
- 2x6 Exterior Wall
- Lifetime Warranty on Asphalt Shingles

Home Interior

- 9' Ceilings w/ smooth Finish
- Tray Ceiling standard in DR & MBR
- Great Room Vaulted Ceiling.
- All wood cabinets with solid maple dovetail drawers and soft close hinges/slides. Crown molding. 36"-42" Wall cabinets.
- Granite counter tops
- Quality Plumbing fixtures. Raised height elongated bowl toilets.
- Hardwood Flooring in Main Areas
- Ceramic Tile Flooring in all wet areas
- Tile Shower enclosure in Master Bath.
- Curb less shower entry for easy access.
- ADA blocking for future grab bars.
- Carpet in Bedrooms
- Interior Trim: Walls to have two coats of paint. Walls flat finish and Trim semi-gloss. 3 1/4" Casing and wide 5 1/4" Base molding standard.
- Solid shelving/wire in closets



Minutes from historic downtown Hendersonville and only a short drive from Lake Lure, is Vista at Blacksmith Run— an exclusive Western North Carolina mountain property designed for residential development. Blacksmith Run's secluded mountain lifestyle and four season climate turns an ordinary day into an unforgettable experience. With convenient access to all of Western North Carolina's treasures, this quiet mountain property was developed for those who appreciate the best that life has to offer.

DESCRIPTION

Cottage Style
4 Bedrooms
3 Baths
2 Car Garage

SQUARE FOOTAGE

Main: 1,763 Sq. Ft.
Bonus Room: 510 Sq. Ft.
Total Finished: 2,273 Sq. Ft.
Garage: 637 Sq. Ft.
Covered Deck: 196 Sq. Ft.
Covered Porch: 134 Sq. Ft.
*Bonus Sq. Ft. includes Opt.
Bath

www.vistadevelopers.com



*Plan renderings may appear different from scaled drawings.

HVAC & Electrical

- 14 SEER Heat Pump w/ dual zoning where applicable
- Ceiling fans provided in all Bedrooms and covered deck areas. Light & Fan switched separately.
- Stainless all Electric Appliances
- Lighting package to include recessed kitchen lights and pendant lighting over bar/island. Attractive Standard lighting packages.
- Convenient floor outlets in Living Room.
- 36" ventless gas fireplace with mantle and stone face finishes
- Satin nickel, chrome, oil rubbed bronze finishes available for all hardware. Includes towel bars and toilet paper holders for baths.

Home Exterior

- Jeld Wen Double Hung Low Maintenance Windows. Easy Maint. Grid between the glass. Tilt sash removable.
- Low Maint. Cement Siding
- Fiberglass Exterior Doors.
- ZIP Wall exterior sheathing
- 2x6 Exterior Wall
- Lifetime Warranty on Asphalt Shingles

Home Interior

- 9' Ceilings w/ smooth Finish
- Tray Ceiling standard in DR & MBR
- Great Room & Kitchen Vaulted Ceiling.
- All wood cabinets with solid maple dovetail drawers and soft close hinges/slides. Crown molding. 36"-42" Wall cabinets.
- Granite counter tops
- Quality Plumbing fixtures. Raised height elongated bowl toilets.
- Hardwood Flooring in Main Areas
- Ceramic Tile Flooring in all wet areas
- Tile Shower enclosure in Master Bath.
- Curb less shower entry for easy access.
- ADA blocking for future grab bars.
- Carpet in Bedrooms
- Interior Trim: Walls to have two coats of paint. Walls flat finish and Trim semi-gloss. 3 1/4" Casing and wide 5 1/4" Base molding standard.
- Solid shelving/wire in closets



Minutes from historic downtown Hendersonville and only a short drive from Lake Lure, is Vista at Blacksmith Run— an exclusive Western North Carolina mountain property designed for residential development. Blacksmith Run's secluded mountain lifestyle and four season climate turns an ordinary day into an unforgettable experience. With convenient access to all of Western North Carolina's treasures, this quiet mountain property was developed for those who appreciate the best that life has to offer.

www.vistadevelopers.com

DESCRIPTION

Cottage Style

3 Bedrooms

2 Baths

2 Car Garage

*Optional Bonus Room
(4th Bedroom & Bath)

SQUARE FOOTAGE

Main: 2,069 Sq. Ft.

Bonus Room: 302 Sq. Ft.

Total Heated: 2,371 Sq. Ft.

Garage: 528 Sq. Ft.

*Covered Deck: 144 Sq. Ft.

*Covered Porch: 45 Sq. Ft.

*Deck: 192 Sq. Ft.



*Plan renderings may appear different from scaled drawings.

Home Exterior

- Jeld Wen Double Hung Low Maintenance Windows. Easy Maint. Grid between the glass. Tilt sash removable.
- Low Maint. Cement Siding
- Fiberglass Exterior Doors.
- ZIP Wall exterior sheathing
- 2x6 Exterior Wall
- Lifetime Warranty on Asphalt Shingles

Home Interior

- 9' Ceilings w/ smooth Finish
- Tray Ceiling optional.
- All wood cabinets with solid maple dovetail drawers and soft close hinges/slides. Crown molding. 36"-42" Wall cabinets.
- Granite counter tops
- Quality Plumbing fixtures.
Raised height elongated bowl toilets.
- Hardwood Flooring in Main Areas
- Ceramic Tile Flooring in all wet areas
- Tile Shower enclosure in Master Bath.
- Curb less shower entry for easy access.
- ADA blocking for future grab bars.
- Carpet in Bedrooms
- Interior Trim: Walls to have two coats of paint. Walls flat finish and Trim semi-gloss. 3 1/4" Casing and wide 5 1/4" Base molding standard.
- Solid shelving/wire in closets

HVAC & Electrical

- 13 SEER Heat Pump w/ dual zoning where applicable
- Ceiling fans provided in all Bedrooms and covered deck areas.
Light & Fan switched separately.
- Stainless all Electric Appliances
- Lighting package to include recessed kitchen lights and pendant lighting over bar/island. Attractive Standard lighting packages.
- Convenient floor outlets in Living Room.
- 36" ventless gas fireplace with mantle and stone face finishes
- Satin nickel, chrome, oil rubbed bronze finishes available for all hardware. Includes towel bars and toilet paper holders for baths.

On-Site Real Estate Discovery Center

141 Black Iron Lane, Hendersonville, NC 28792
828-685-3818

Vista Developers, LLC.

525 N Main St, Hendersonville, NC 28792
828-698-2400



Minutes from historic downtown Hendersonville and only a short drive from Lake Lure, is Vista at Blacksmith Run— an exclusive Western North Carolina mountain property designed for residential development. Blacksmith Run's secluded mountain lifestyle and four season climate turns an ordinary day into an unforgettable experience. With convenient access to all of Western North Carolina's treasures, this quiet mountain property was developed for those who appreciate the best that life has to offer.

DESCRIPTION

Cottage Style
3 Bedrooms
2 Baths
2 Car Garage

SQUARE FOOTAGE

Main: 2,140 Sq. Ft.
Total Finished: 2,140 Sq. Ft.
Garage: 576 Sq. Ft.
*Covered Deck: 216 Sq. Ft.
*Deck: 130 Sq. Ft.
Covered Porch: 40 Sq. Ft.

www.vistadevelopers.com



*Plan renderings may appear different from scaled drawings.

HVAC & Electrical

- 13 SEER Heat Pump w/ dual zoning where applicable
- Ceiling fans provided in all Bedrooms and covered deck areas. Light & Fan switched separately.
- Stainless all Electric Appliances
- Lighting package to include recessed kitchen lights and pendant lighting over bar/island. Attractive Standard lighting packages.
- Convenient floor outlets in Living Room.
- 36" ventless gas fireplace with mantle and stone face finishes
- Satin nickel, chrome, oil rubbed bronze finishes available for all hardware. Includes towel bars and toilet paper holders for baths.

Home Exterior

- Jeld Wen Double Hung Low Maintenance Windows. Easy Maint. Grid between the glass. Tilt sash removable.
- Low Maint. Cement Siding
- Fiberglass Exterior Doors.
- ZIP Wall exterior sheathing
- 2x6 Exterior Wall
- Lifetime Warranty on Asphalt Shingles

Home Interior

- 9' Ceilings w/ smooth Finish
- Vaulted ceiling in GR & Kitchen
- Tray Ceiling optional.
- All wood cabinets with solid maple dovetail drawers and soft close hinges/slides. Crown molding. 36"-42" Wall cabinets.
- Granite counter tops
- Quality Plumbing fixtures. Raised height elongated bowl toilets.
- Hardwood Flooring in Main Areas
- Ceramic Tile Flooring in all wet areas
- Tile Shower enclosure in Master Bath.
- Curb less shower entry for easy access.
- ADA blocking for future grab bars.
- Carpet in Bedrooms
- Interior Trim: Walls to have two coats of paint. Walls flat finish and Trim semi-gloss. 3 1/4" Casing and wide 5 1/4" Base molding standard.
- Solid shelving/wire in closets