

What's new with Sage 300 2017



Upgrade to Sage 300 or Sage 300c 2017 today so you can benefit from improved business visibility, optimise inventory forecasting, and process transactions more efficiently.

If you move to Sage 300c, you will also benefit from new enhancements, including a new notes feature, customisation options, and inventory management capabilities.

What's new in Sage 300c

Increase business visibility

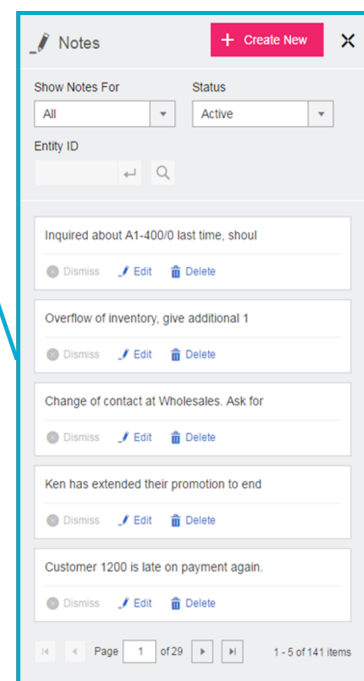
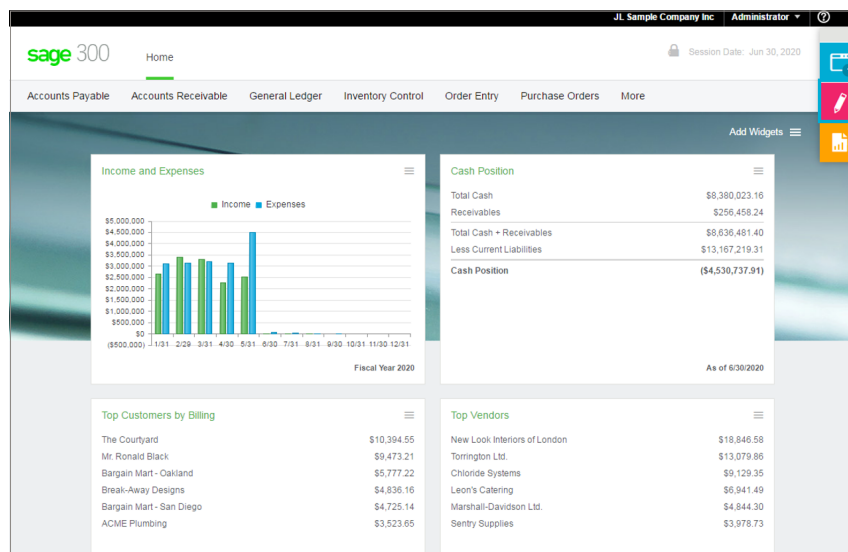
Create and share notes related to a customer, vendor, or inventory item, so you and your colleagues always have the right information, right when you need it. With notes, you'll be able to keep track of your most important or most problematic issues, ensuring business transparency across the organisation.

Added new screens and improved user experience of existing web screens

We have added new financial management and administration web screens as well as made a number of design enhancements to improve workflow and efficiency of frequently used web screens.

Customise your web experience

With new customisation options, you'll be able to easily remove fields that you don't need on the web screens, and edit field labels to suit the specific needs of your business. Moreover, web screens will automatically adjust to remove empty white space, minimising scrolling down the screen.



Optimise operational visibility company-wide with the new Notes feature.



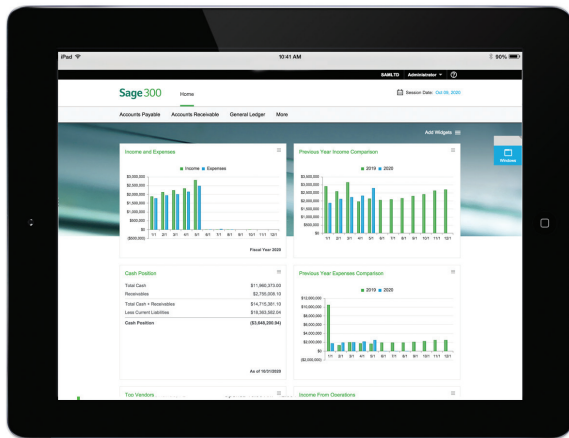
Streamline credit card processing—available in both Sage 300 and Sage 300c 2017

You will now be able to process payments faster with just one click of the mouse, when using Sage 300 Payment Processing¹. In addition, we have added batch credit card processing to Sage 300 2017, allowing you to bring up multiple outstanding invoices on one screen and process them using the default credit card on file. You will also be able to set up regular payment reminders in the scheduler, so you can effortlessly process recurring transactions.

What is Sage 300c?

With Sage 300c, you'll have anytime/anywhere access, a modern new user interface, and easy mobile access to real-time key performance indicators.²

These new screens aren't just great looking, they also help you improve productivity. You can access Sage 300c as you do today or benefit from the new web screens using a browser from a desktop, laptop, or tablet. You have the freedom of choice on how you want to access Sage 300—anytime, anywhere.³



Enjoy mobile access with new modern web screens

Sage 300c features new web screens that can be run side by side with the Sage 300 traditional Windows screens. These web screens are intuitive, and easy to navigate and provide the same functionality you have today in Sage 300.



Keep tabs on critical information with the new homepage

Get a pulse on your business with the new web homepage in Sage 300c. You can select an anytime, anywhere dashboard specific to your business with key performance indicators to access in the office or away through any mobile device.

For more information about Sage 300 2017 or Sage 300c, contact 13-SAGE (7243) in Australia or 0800 904 409 (New Zealand).

About Sage

Sage energizes the success of businesses and their communities around the world through the use of smart technology and the imagination of our people. Sage has reimagined business and brings energy, experience, and technology to inspire our customers to fulfill their dreams. We work with a thriving community of entrepreneurs, business owners, tradespeople, accountants, partners, and developers who drive the global economy. Sage is a FTSE 100 company with 13,000 employees in 23 countries. For more information, visit www.sage.com.

1 Sage 300 Payment Processing requires a setup fee and ongoing transaction fees.

2 With Sage 300c, you will have web access to Sage 300 General Ledger, Accounts Receivable, Accounts Payable, Order Entry, Purchase Order, Inventory Control, Tax Services, Bank Services, Common Services, Administrative Services, and Payment Processing.

3 To use Sage 300 web screens over an external network or the Internet, you must have security measures such as Secure Socket Layer (SSL) or Virtual Private Network (VPN) in place to protect your data. Consult your IT professional or business partner to determine the security measures appropriate for your needs.