

SPECIFICATIONS

48" MULTI-TOUCH DISPLAY



The Multi 486

✉ touch@horizondisplay.com

☎ 949.454.4620

🌐 www.HorizonDisplay.com

Panel Specs

Viewable Size	48" LCD with 1920x1080 resolution
Brightness	350/500 nits
Contrast	4000:1

I/O Specs

Input Terminals-Digital	(2) HDMI, ((1) DVI-D, (2) DisplayPort
Audio Amplifier	Integrated 10W
VESA Mount	300mm x 300mm (4 holes; M6)

Touch System Specifications

Input Method	Finger, gloved hand or any other pointer (no pressure required) Object Shape Recognition and Palm Rejection.
Touch Accuracy	0.5mm (0.02 inch)
Calibration	One time only four point calibration, no drift
Sample Rate	Up to 250 frame per second
Protection Glass	5mm Laminated Safety Glass
Number of Touch Points	6 points of touch (additional software may be required)
Interface Protocol	USB 2.0, Type A Receptacle
Operating System	Windows, MAC, LINUX , Android (requires drivers)

Your search for touch displays is over. **Now let's get to work!**

Key Features



48" LCD Multi-touch Monitor

Commercial grade LCD with
24/7 hour duty cycle

IR touch technology with 6
points of interaction

Behind the bezel integration
eliminates parallax issues

Custom bezel colors and logo
branding available

ask us!

about our interactive gallery showcase
software shown above

join our online community!

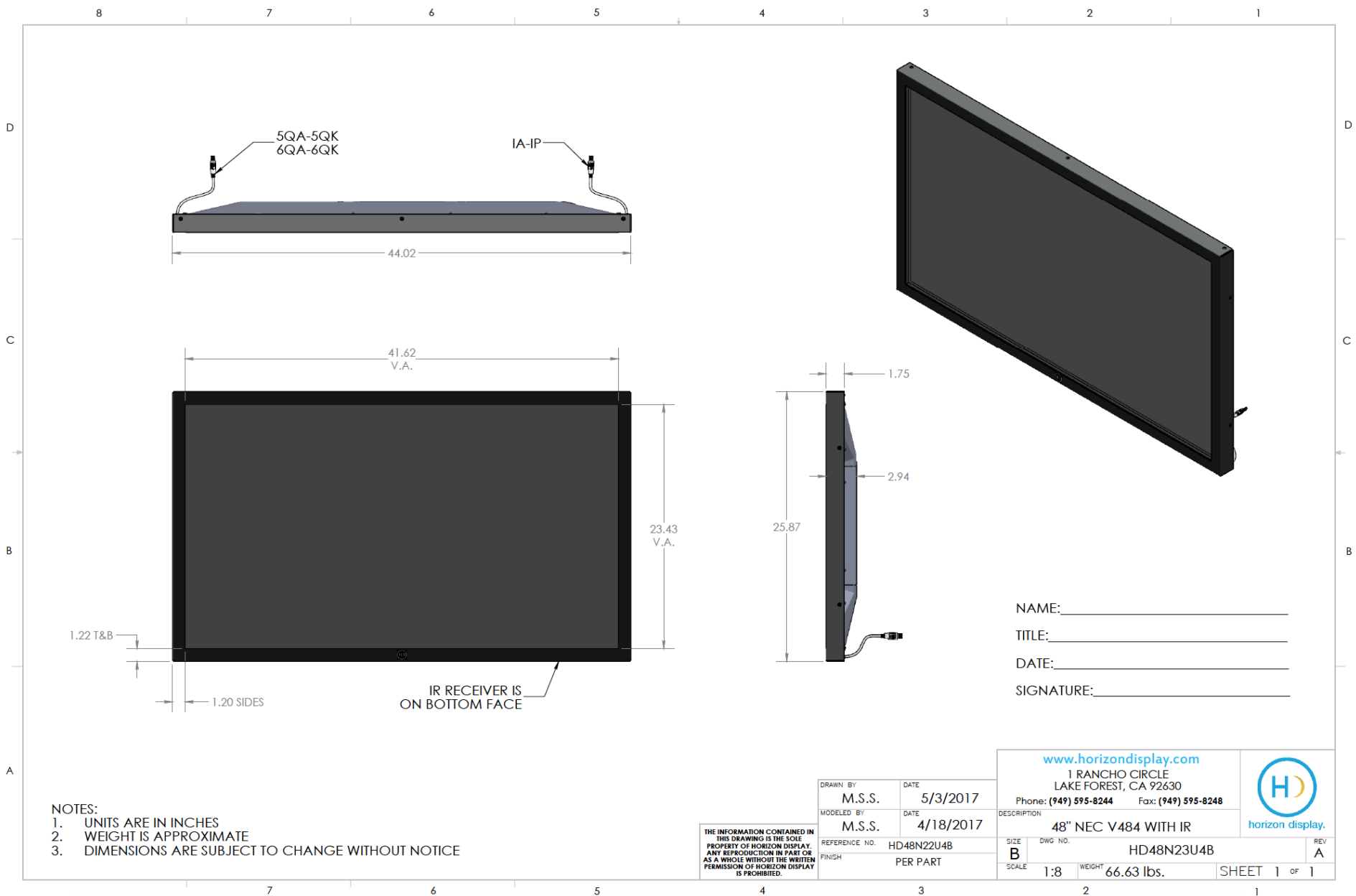


Warranty: Warranty options are available. Contact your Display Solutions Specialist for more information

SPECIFICATIONS

The Multi 486

48" MULTI-TOUCH DISPLAY



NAME: _____
 TITLE: _____
 DATE: _____
 SIGNATURE: _____

- NOTES:
 1. UNITS ARE IN INCHES
 2. WEIGHT IS APPROXIMATE
 3. DIMENSIONS ARE SUBJECT TO CHANGE WITHOUT NOTICE

THE INFORMATION CONTAINED IN THIS DRAWING IS THE SOLE PROPERTY OF HORIZON DISPLAY. ANY REPRODUCTION IN PART OR AS A WHOLE WITHOUT THE WRITTEN PERMISSION OF HORIZON DISPLAY IS PROHIBITED.

DRAWN BY	M.S.S.	DATE	5/3/2017
MODELED BY	M.S.S.	DATE	4/18/2017
REFERENCE NO.	HD48N22U4B		
FINISH	PER PART		

www.horizondisplay.com	
1 RANCHO CIRCLE LAKE FOREST, CA 92630	
Phone: (949) 595-8244	Fax: (949) 595-8248
DESCRIPTION: 48" NEC V484 WITH IR	
SIZE: B	DWG NO.: HD48N23U4B
SCALE: 1:8	WEIGHT: 66.63 lbs.



REV A