



## Laboratory Fans

### FEATURES

- Molded fiberglass housing
- Direct drive 1 /3 hp O.D.P. motor
- Molded polypropylene impeller
- 8" round inlet and discharge
- Fully rotatable fan housing provides unlimited discharge positions
- Premium quality material and components

### OPTIONS

- Motor cover
- Vibration isolators
- Inlet or outlet flex connectors
- 0 to 2,000 rpm speed controller
- TEFC or TEEP motors

HEE's HPC-0800 laboratory fan is ideally suited for lab or backdraft hoods requiring 300 to 900 cfm of air flow with static pressures in the range of 1/8" to 1" maximum.

This fan is powerful, light weight and compact. This fan typically operates on 110 volt 60 Hz power and is available with an optional speed controller.



SEE WHAT  
HEE-DUALL  
CAN DO  
FOR YOU

1172 South M-13, Lennon, MI 48449 USA | P: 1-844-287-4044 | F: 989-725-8188  
4222 East La Palma Ave., Anaheim, CA 92807 USA | P: 1-844-287-4044 | F: 630-295-9019

# CECO HEE-DualI

## LABORATORY FAN MODEL HPC 0800 STANDARD FEATURES

**HEE-DUAL MODEL HPC 0800** laboratory fans are of a centrifugal design with a backward curve wheel design. Each fan is complete with a powder coated steel base and an Open Drip motor with an arrangement 4 direct drive configuration.

**PERFORMANCE** data was obtained in a laboratory registered at AMCA per AMCA 210 air performance testing in accordance with AMCA Standard 210-85, ASHRAE 51-1985.

**CORROSION-RESISTANT CONSTRUCTION** is used on the fan housing and fabricated from fiberglass using a premium grade corrosion resistant vinyl ester resin with a Class I flame spread per ASTM E84. All hardware is stainless steel and grade 5 electroplated hardware is used to mount the motor to the steel base. The exterior is finished with a UV resistant gel coat with a TAN color.

**WHEEL DESIGN** is a backward curve design and secured directly on the motor shaft. The CCW fan wheel material is polypropylene and a steel plated center hub with a setscrew. The steel hub is covered with a removable black vinyl push on protective cap.

**MOTOR** is a heavy gauge steel frame and base motor with an Open Drip Proof (OPD) rating suitable for indoor installations. The 1/3 horsepower 48 frame 1,800 rpm requires a supply voltage of 1/60/115 volts with a 1.0 service factor, with full load current of 6.45 amps. The motor is securely mounted on the fan steel base.

**BASE** is fabricated from carbon steel and sandblasted to an all metal white finish with an abrasive blast before an electrostatic powder coating is applied with a minimum of 2 to 2.5 mils thickens. Standard color is TAN. Anchor bolts and shims are not included.

### NOTE:

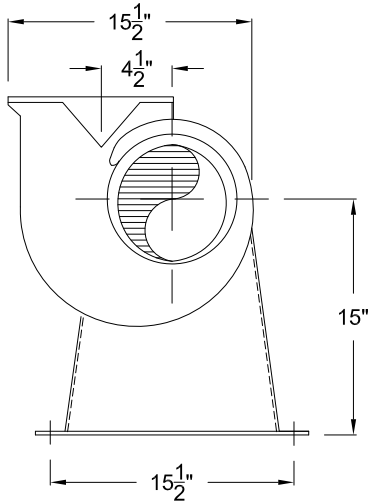
#### 1. Optional explosion proof motor Model HPC 0801

The motor is a heavy gauge steel frame and base motor with an Explosion Proof rating EPFC for Class I Groups C & D and Class II Groups F & G with a capacitor start design. The 1/3 horsepower 56 frame 1,800 rpm requires a supply voltage of 1/60/115/208-230 volts with a 1.0 service factor, with full load current of 6.6 amps. The explosion proof conduit box is included and shipped loose.

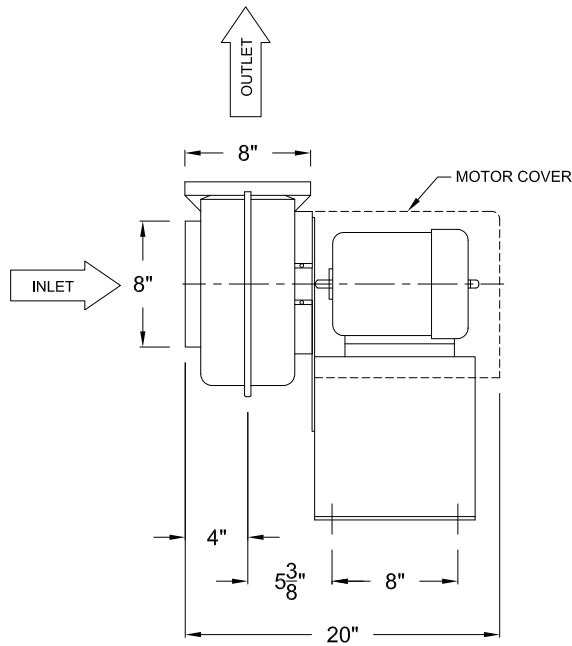
#### 2. Optional 1/2 HP DC motor with 0-2,000 rpm speed controller Model HPC 0802



# CECO HEE-Duall



FRONT ELEVATION



SIDE ELEVATION

QUANTITY: -		
TAG: -		
PERFORMANCE		
DRIVE: DIRECT DRIVE		
AIR FLOW RANGE: 300 - 900 CFM		
STATIC PRESSURE RANGE: 1/8 TO 1 INCH W.C.		
RPM: 1,750		
OPTIONS		
MOTOR COVER: -		
ISOLATORS (NEOPRENE): -		
INLET FLEX CONNECTOR (NEOPRENE): -		
OUTLET FLEX CONNECTOR (NEOPRENE): -		
FAN HOUSING DISCHARGE ROTATABLE (STD)		
MATERIALS OF CONSTRUCTION		
FAN WHEEL: POLYPROPYLENE		
FAN SCROLL HOUSING: AOC K022 VINYL ESTER RESIN OR EQUAL		
W/ 1.5% ANTIMONY TRIOXIDE, WITH TAN GEL COAT		
EXTERIOR		
SHAFT: CARBON STEEL		
FAN DATA		
ROTATION: CCW	DISCHARGE: UBD	
ARRANGEMENT: 4	WGT: 40 LBS	
ELEV: -	TEMP: (°F)-	
MOTOR DATA		
FRAME: 48	HP: 1/3	RPM: 1,750
VOLTS: 115	PH: 1	CYCL: 60
ENCLOSURE: ODP		
FURNISHED BY: HEE	MOUNTED BY: HEE	
MAKE: MARATHON (S106)	TYPE: -	
NOTES: -		

**CECO HEE-Duall**

THIS DRAWING IN DESIGN AND DETAIL IS THE PROPERTY OF CECO HEE-DUALL (HEE, LLC) AND MUST NOT BE USED EXCEPT IN CONNECTION WITH CECO HEE-DUALL WORK. ALL RIGHTS OF DESIGN OR INVENTION ARE RESERVED. UNAUTHORIZED DISCLOSURE OR USE IS PROHIBITED BY LAW. DIMENSIONS AND TOLERANCES ARE NOT TO BE EXCEEDED. MEASUREMENTS AND CONSTRUCTION IS REQUIRED. TO FACILITATE SHIPMENT, SOME COMPONENTS AND ITEMS WILL BE SHIPPED LOOSE AND FIELD ASSEMBLY BY OTHERS WILL BE REQUIRED.

MADE IN THE USA			
REV.	DATE	BY	DESCRIPTION
08/30/17	AS		MOTOR INFO, RESIN NOTE
09/14/18	AS		MOTOR FRAME

LABORATORY FAN MODEL HPC 0800			
ENR:	SALES:	P.O.R:	DATE:
J. VOLBEDA			06/14/07
SALES DRAWING			
S.O.R:	DRAWN BY:	DRAWING NUMBER	
SCALE: 1 1/2" = 1'-0"	ARMANICDP	HPC-0800	

MAY 2018

# CECO HEE-DualI

