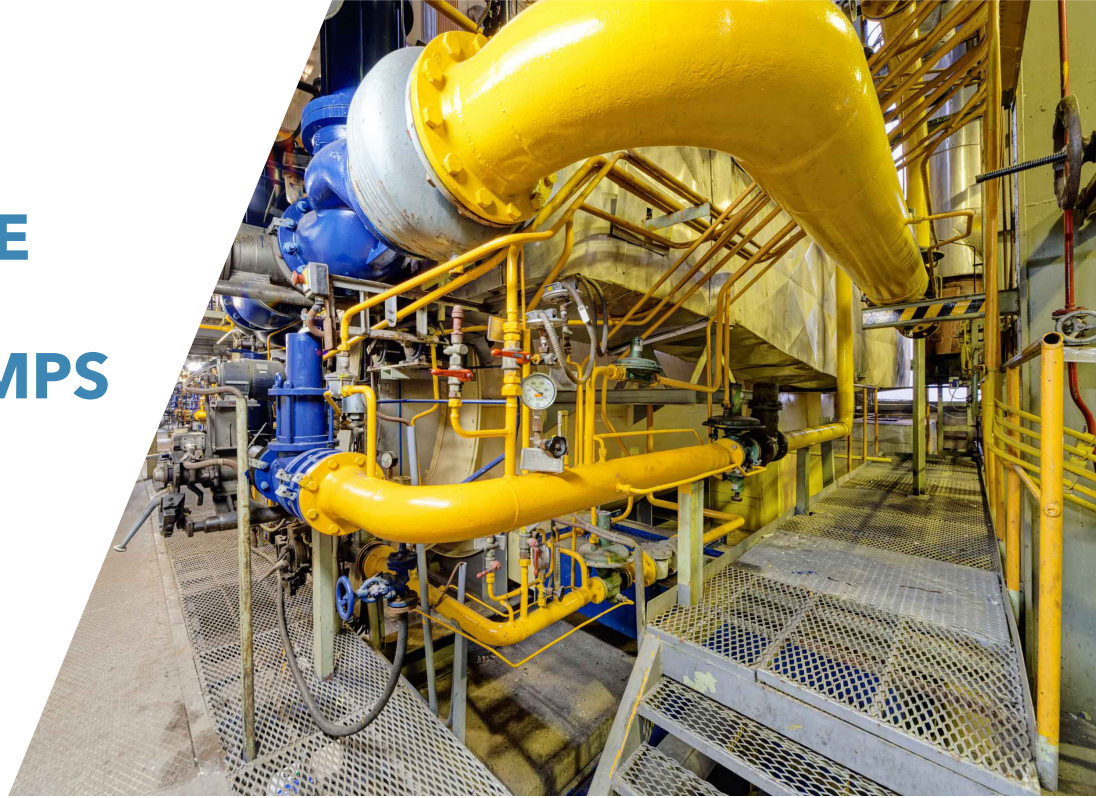


**CECO**  
ENVIRONMENTAL

**Sethco**

**BEARING-FREE  
SEALLESS  
VERTICAL PUMPS**

For Corrosive Liquid  
Pumping



# DESIGN FEATURES

## No Seals, No Bearings, No Wearing Parts

The ZDX/ZKX series pumps are specially designed for in-tank and out-of-tank use. They are built for heavy duty pumping of acid and alkaline solutions (pH 0-14), including electroless nickel and copper and other corrosive liquids at temperatures as high as 240°F (115°C). Rugged, corrosion resistant CPVC (to 180°F/82°C) or natural PVDF (to 240°F/115°C) construction eliminates any metal contact preventing contamination or any reaction with corrosive liquids. No bearings, seals, or wearing parts in the pump permit dry running without damage.

## Patented Twin Impeller Design

Using a unique opposing twin-impeller design, the ZDX/ZKX series pumps provide high volume circulation and minimize leakage up the pump column, while minimizing entrained air.

## Ease of Maintenance

The ZDX/ZKX series pumps have been designed to provide a long, reliable service life in a wide variety of industrial applications. Each phase of the pump's production cycle has been carefully controlled, thereby resulting in minimal maintenance. The only scheduled preventative maintenance is a periodic check of motor operational data (volts, amps) as well as the monitoring of pressure and flow rates. All pump components are readily accessible and do not require the use of any special tools.

## Vibration Free

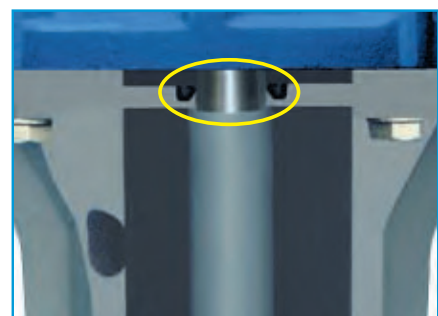
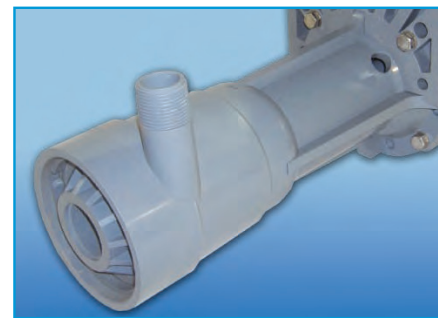
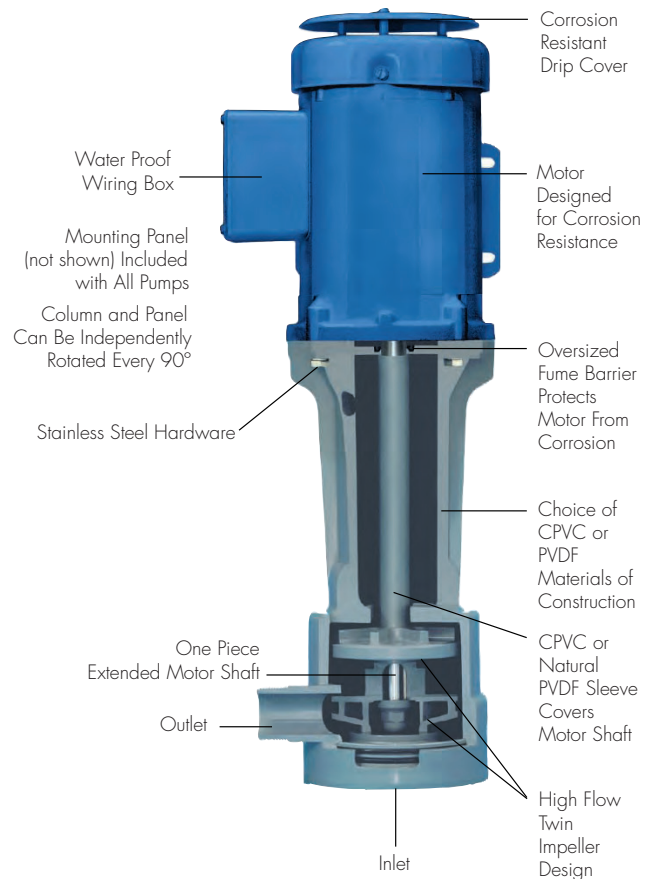
All units are delivered fully assembled and DO NOT require alignment during installation. The rigid, high strength molded pump body and corrosion resistant motors have been designed to provide quiet, vibration free operation over an extended operating pump life.

## Mounts Easily

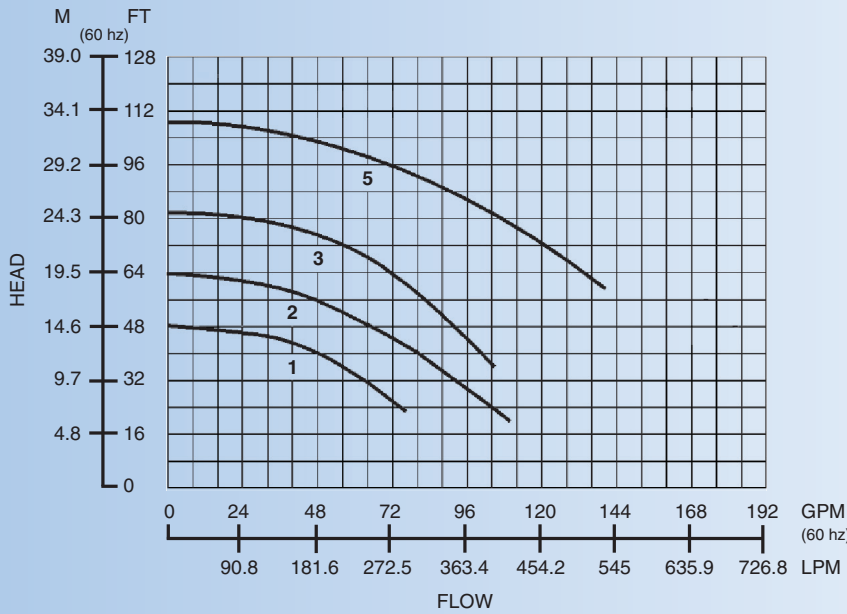
Using the convenient mounting panel included with all pumps, the pump can be easily mounted to a tank in a self-priming position, in-tank or out-of-tank, as required.

## Typical Applications

- Chemical Processing
- Tank Recirculation/Transfer
- Plating
- Recirculation/Filtration
- Water/Wastewater Treatment
- Scrubber
- Parts/Spray Cleaning Booths



# COMPOSITE CURVES



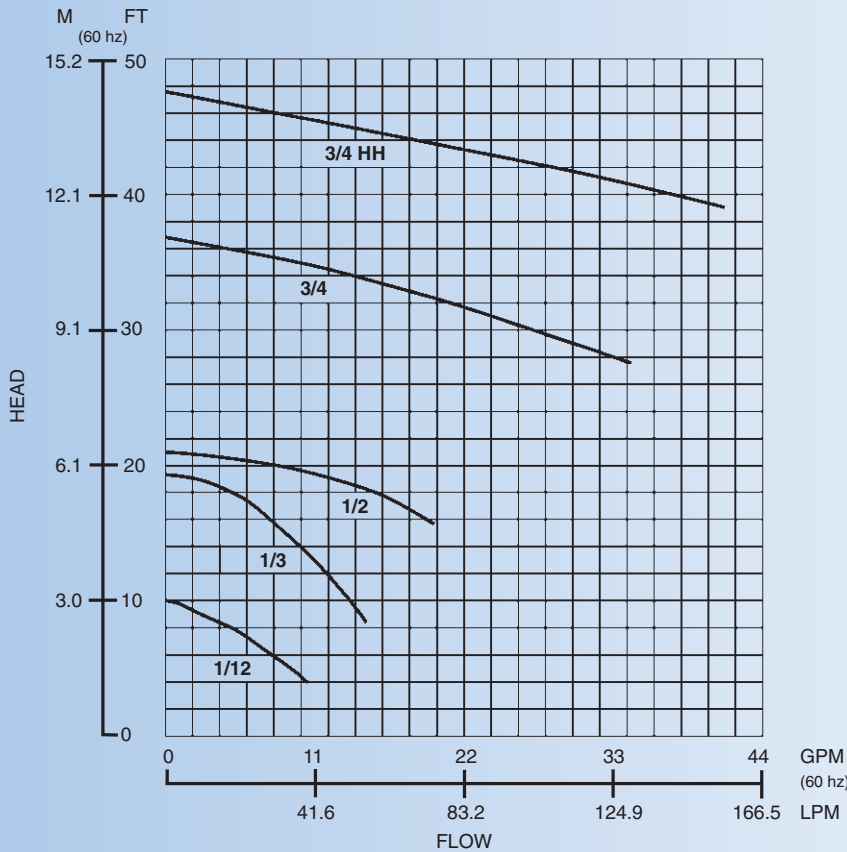
**FOR MODELS**

ZDX/ZKX-1

ZDX/ZKX-2

ZDX-3

ZDX-5



**FOR MODELS**

ZDX-1/12

ZDX/ZKX-1/3

ZDX/ZKX-1/2

ZDX/ZKX-3/4

ZDX/ZKX-3/4 HH



## Accessories

Suction and bottom strainers are available as optional accessories. The suction strainer is attached to the pump body and prevents larger particles from entering the pump body. A bottom strainer assembly will allow the pump to draw liquid from deep within a tank or close to the bottom of the vessel. During initial start-up and/or priming, the liquid must be above the impeller. If the pump should lose prime or the pump is stopped after the liquid level has dropped below the impeller, the liquid level must be allowed to rise above the impeller before the pump can be restarted.

OEM mounting is also available as an optional accessory. This includes a full size mounting plate (not the smaller size mounting plates normally supplied) with complete discharge piping to the top of the mounting plate.

## Motors

The ZDX/ZKX electric motors are totally enclosed, fan cooled, continuous duty rated. They are UL recognized, CSA & CE approved. Each motor (except the ZDX-1/12) is equipped with a removable drip cover and corrosion resistant paint. The larger sizes, ZDX-1/3 and above, are assembled with oversized, double sealed ball bearings and have solid one-piece shafts to reduce impeller whip and provide long term reliable operation. In addition, the larger motors, ZDX-1/3 and above, are equipped with a separate lip seal where the stainless steel shaft enters the motor housing. This lip seal prevents corrosive vapor and liquids from entering the motor housing and decreasing motor reliability.



ZDX/ZKX Series Pumps Are Available With Custom Mounting Plates for OEM Applications

## PUMP SPECIFICATIONS: FLOW CAPACITIES TO 185 GPM (700 LPM), PRESSURE TO 124 FT (37.8 METERS), 10 MODELS

Models	Mat'l of Construction	Max Flow		Max Head		Max Operating Temperature	Motor Characteristics*					Weight (lbs./Kg.)			
		GPM	LPM	Ft	M		HP	Volts	Hz	Phase	Type	Net		Packed	
											lbs.	Kg.	lbs.	Kg.	
ZDX-1/12	CPVC	10	38	10	3	180°F / 82°C	1/20	115/230	50 / 60	1	TENV	7	3.2	9	4.11
ZDX-1/3	CPVC	16	61	18	5.5	180°F / 82°C	1/6	115/230	50 / 60	1	TEFC	21	9.5	25	11.3
ZKX-1/3	PVDF	16	61	18	5.5	240°F / 115°C	1/6	115/230 or 208 - 230/380 - 460	50 / 60	1 or 3	TEFC	21	9.5	25	11.3
ZDX-1/2	CPVC	20	75	21	6.4	180°F / 82°C	1/4	115/230 or 208 - 230/380 - 460	50 / 60	1 or 3	TEFC	23	10.4	28	12.7
ZKX-1/2	PVDF	20	75	21	6.4	240°F / 115°C	1/4	115/230 or 208 - 230/380 - 460	50 / 60	1 or 3	TEFC	23	10.4	28	12.7
ZDX-3/4	CPVC	34	129	35	10.6	180°F / 82°C	3/4	115/230 or 208 - 230/380 - 460	50 / 60	1 or 3	TEFC	44	20	52	23.6
ZKX-3/4	PVDF	34	129	35	10.6	240°F / 115°C	3/4	115/230 or 208 - 230/380 - 460	50 / 60	1 or 3	TEFC	44	20	52	23.6
ZDX-3/4HH	CPVC	41	155	47	14.3	180°F / 82°C	3/4	115/230 or 208 - 230/380 - 460	50 / 60	1 or 3	TEFC	44	20	52	23.6
ZKX-3/4HH	PVDF	41	155	47	14.3	240°F / 115°C	3/4	115/230 or 208 - 230/380 - 460	50 / 60	1 or 3	TEFC	44	20	52	23.6
ZDX-1	CPVC	76	288	48	14.6	180°F / 82°C	1	115/230 or 208 - 230/380 - 460	50 / 60	1 or 3	TEFC	45	20.4	53	24
ZKX-1	PVDF	76	288	48	14.6	240°F / 115°C	1	115/230 or 208 - 230/380 - 460	50 / 60	1 or 3	TEFC	45	20.4	53	24
ZDX-2	CPVC	94	356	64	19.5	180°F / 82°C	2	208-230/380 - 460	50 / 60	3	TEFC	45	20.4	53	24
ZKX-2	PVDF	94	356	64	19.5	240°F / 115°C	2	208-230/380 - 460	50 / 60	3	TEFC	45	20.4	53	24
ZDX-3	CPVC	105	397	81	24.7	180°F / 82°C	3	190/380 - 230/460	50 / 60	3	TEFC	62	28.1	70	31.8
ZDX-5	CPVC	140	530	109	33	180°F / 82°C	5	190/380 - 230/460	50 / 60	3	TEFC	95	43.1	105	47.6

\* Single phase motors are supplied with on/off switches, cord and a manual reset thermal overload protection. 115V motors have grounded plug. All 3 phase motors must be wired by the customer with external overload protection.

**CECO Sethco**

700 Emlen Way, Telford, PA 18969

P: 800.645.0500

<https://www.cecoenviro.com/sethco>