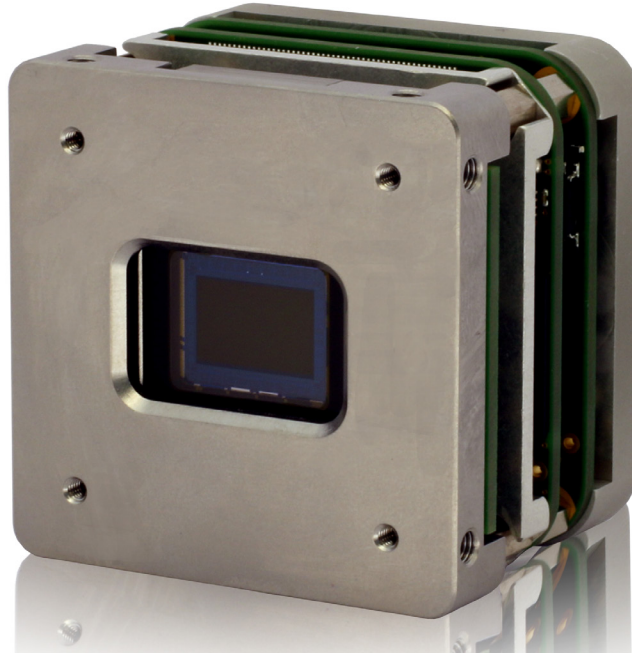


# Extended Day Camera™ Module TMX74-60x/CL



## Key characteristics

**2Mpx**  
5.86 $\mu\text{m}^2$

1920  
1200

**60**  
**FPS**  
12bit

CMOS  
Global  
Shutter

30 fps  
RGB24  
CL-base

<3.2W

<45mm<sup>3</sup>

<130g

**74dB**  
**DNR**

- 2 Megapixel @60 fps RAW-Bayer
- True Global Shutter CMOS
- Image enhancement features
- Rugged design MIL-STD-810G
- Wide temperature range
- Compact & light design
- Optional CoaXPress V1.1 / 3G-SDI video interface

## Description

The TMX74 camera provides 2 megapixel RGB images at 30 frames per second or 60 fps in RAW-bayer output. Based on a sensitive 1/1.2" Global Shutter CMOS sensor, this camera delivers crisp images under low lighting conditions. Combined with high sensitivity of the image sensor, the low blooming, no smear and low noise behavior make it suitable for challenging applications like outdoor, medical and machine vision systems. The compact design allows for easy integration into system architectures.

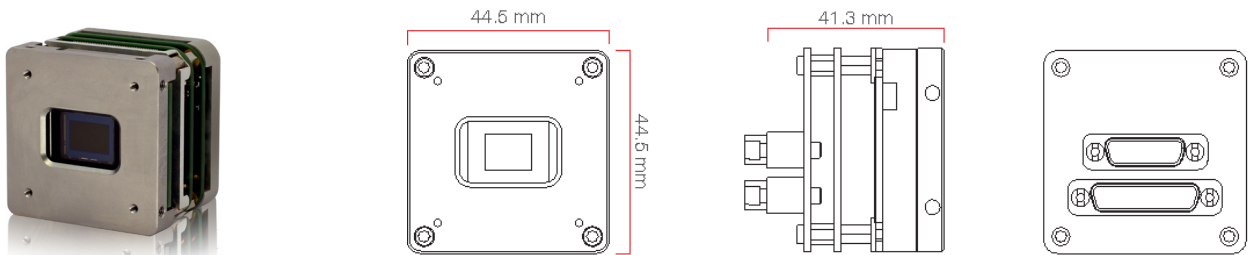
The TMX74 camera increases detection, recognition and identification ranges, making it ideal for situational awareness & long range observation systems.

## Performance

	TMX74-60m/CL	TMX74-60c/CL
Sensor	IMX174 1/1.2" Global shutter CMOS	
Resolution	1920 x 1080 (Other resolutions are selectable max. 1936 x 1216)	
Pixelsize	5.86 $\mu\text{m}$ (H) x 5.86 $\mu\text{m}$ (V)	
Framerate	60 fps	30 fps RGB 60 fps Bayer
Mono / Color	Monochromatic	RGB Color Switchable RAW Bayer
Noise Equivalent Illumination (3200K, Typical without lens)	0.014mlux-s	0.094 mLux-s (Green pixel 2mm BG38)
Dynamic range	74 dB*	
Interface	Camera link (base) mono8/10/12/RGB24	
Triggering & External Sync	I/O and Camera link CC	
Communication	RS422 or Camera link	
Power input	10 - 30 Vdc 3.2 W	
Weight	<130g	
Optical interface	Stainless Steel frontplate 4 x M2 31mm pitch (Optional) C-mount with 2mm BG38 filter	
Operating temperature	-40°C to +75°C	
Reliability	MTBF > 30.000h @ 55°C	
Compliance	CE, ROHS, MIL-STD-810H, MIL-HBK-217	
Testing	Acceptance test procedures & Environmental stress screening	

\* According to sensor specifications

## Dimensions



Board level version (also available with Mini-Camera link connector)

### Adimec

Adimec is the leading supplier of high-end cameras for machine vision, medical and outdoor imaging applications. Our Adimec True Accurate Imaging® technology forms the foundation for a broad range of camera products, and brings new levels of precision and accuracy to vision systems.

### Custom cameras

Adimec has the ability to offer additional camera functionality and create customer specific cameras even for small volume programs. Built from platforms, our standard line of cameras give us a flexible base that can be tailored to fit your specifications. Contact us to discuss these options in more detail. Visit: [www.adimec.com/tmx74](http://www.adimec.com/tmx74) for product details.



## Functionality

	-m/CL	-c/CL
<b>Video enhancement</b>	√	√
Auto Exposure Control	√	√
Auto Gain Control	√	√
Auto White Balance	-	√
Contrast enhancement	√	√
Defect Pixel Correction	√	√
Gamma Correction	√	√
<b>Signal Processing</b>		
Image flip (H+V)	√	√
Region of Interest	√	√
Bore sighting	√	√
Selectable cross hairs	√	√
Image tagging	√	√
4 x eZoom	√	√
<b>Service</b>		
Frame counter	√	√
Temperature readout	√	√
Elapsed time	√	√
Test Pattern	√	√
Build-in test	√	√

**For maximum image quality, performance, and reliability in demanding applications - Choose Adimec**

North America

Phone: (+1) 781-279-0770

Fax: (+1) 781-279-0771

E-mail: [salesus@adimec.com](mailto:salesus@adimec.com)

Europe

Phone: (+31) 40-2353920

Fax: (+31) 40-2353925

E-mail: [saleseu@adimec.com](mailto:saleseu@adimec.com)

Japan & Korea

Phone: (+81) 3-5968-8377

Fax: (+81) 3-5968-8388

E-mail: [salesjp@adimec.com](mailto:salesjp@adimec.com)

Asia - Pacific

Phone: (+65) 6334-1236

Fax: (+65) 6334-1436

E-mail: [salesap@adimec.com](mailto:salesap@adimec.com)

**Adimec**  
[www.adimec.com](http://www.adimec.com)