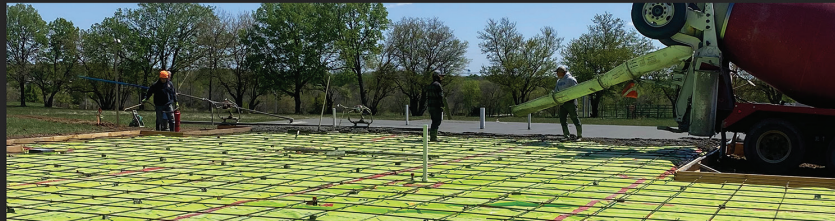
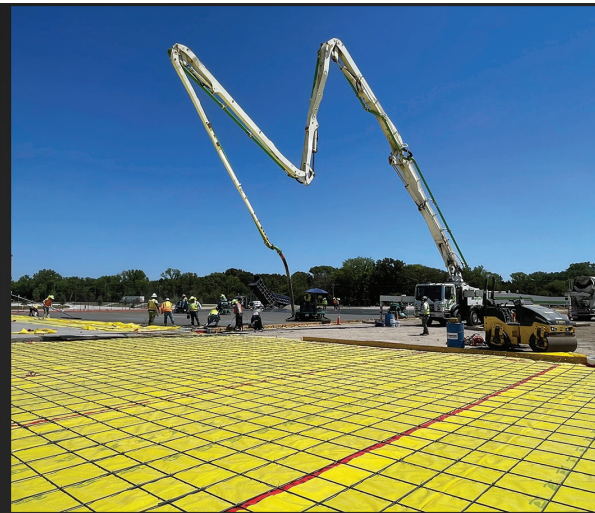


STEGO®

INDUSTRY-LEADING BARRIERS AND UNRIVALED SUPPORT™

When it comes to building construction, don't take the vapor barrier installation lightly. After all, it is there to protect the building's vital foundation from the threats lurking below the slab. We equip you with the confidence to create resilient foundations for buildings where people work, learn, and gather.



STEGO INSTALLATION SUPPORT BE PROACTIVE – GET YOUR SUPPORT

Our goal is to serve as educators that teach your team the best practices to stay efficient and get things done right the first time. Contact us before our Stego products have been installed.



STEGO SOLUTIONS

BELOW-SLAB BARRIERS AND CONCRETE ACCESSORIES



CONCRETE
ACCESSORIES



VAPOR INTRUSION
BARRIER



VAPOR BARRIERS
AND VAPOR RETARDERS



BELOW-SLAB
VAPOR PROTECTION



CRAWL SPACE
ENCAPSULATION



TERMITE AND VAPOR
BARRIER

Since 1998, Stego has revolutionized the way the construction industry protects the *First Side of the Building™* by defending against harmful moisture vapor and soil gases with its flagship product: Stego® Wrap Vapor Barrier – which dramatically improves performance against moisture intrusion.

In addition to Stego Wrap Vapor Barriers, Retarders, and Accessories, we have the following high-performance product offerings: StegoCrawl® Wrap for crawl space encapsulation, StegoHome® Below-Slab Vapor Protection for residential construction, Pango® Wrap Termite and Vapor Barrier, Drago® Wrap Vapor Intrusion Barrier, and Beast® Concrete Accessories.

PROFESSIONAL DESIGN RESOURCES

SYSTEMS DOCUMENTATION, TECHNICAL DETAILS, AND SPECIFICATIONS



Support the success of every project with comprehensive documentation.

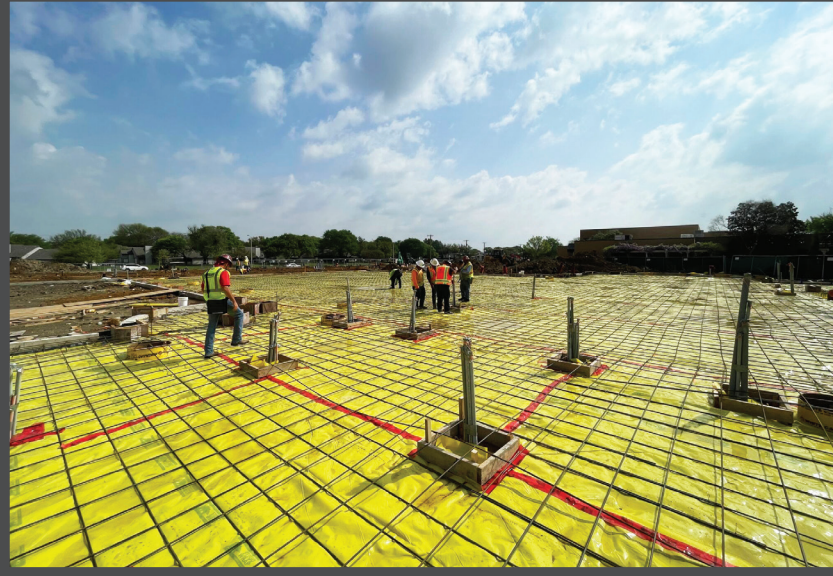
Stego offers the following Printed Binder and a Digital Binder – to streamline the specification process and ensure effortless access to product information.

[View Digital Binder](#)





STEGO WRAP VAPOR BARRIERS AND VAPOR RETARDERS



FEATURES & BENEFITS:

- Unsurpassed Performance Track Record
- Low Permeance and Longevity
- Exceptional Tear and Puncture Resistance
- Easy, Reliable Installation
- Competitively Priced
- Life of the Building™ Warranty
- Installation Support

Our clients have made Stego Wrap the most widely-specified below-slab vapor barrier in North America.

STEGO WRAP VAPOR BARRIER is made with our proven trade secret blend of prime virgin resins and additives. Stego Wrap 15-Mil Vapor Barrier is an ASTM E1745 Class A Vapor Barrier (below 0.01 perms). We focus on producing a product that will maintain its **extremely low permeance**. Stego Wrap Vapor Barrier reduces below slab moisture vapor concerns, increasing the flexibility to change flooring types and overall building use.



- Stego® Wrap 20-Mil Vapor Barrier (Class A)
- Stego® Wrap 15-Mil Vapor Barrier (Class A)
- Stego® Wrap 10-Mil Vapor Retarder (Class A)



THE STEGO WRAP ADVANTAGE



Defends Against Flooring Failures: Water-based adhesives used to secure floor coverings are highly susceptible to deterioration caused by the presence of liquid water and the high pH environment created as alkaline salts from the concrete slab are pulled into adhesive solution. Water from sources below the slab can diffuse through the concrete as vapor, accumulate within the slab, and ultimately condense under the flooring material. This can lead to deterioration of the adhesive or cause direct adverse effects on the flooring itself (e.g., deformation and/or discoloration), leading to costly repairs or even replacement. Additionally, by avoiding flooring failures, building owners can avoid adding to their operational and maintenance costs, and protect themselves from revenue losses associated with shutting down all or part of their building.



Protects Moisture-Sensitive Goods in Storage Facilities and Warehouses: The advantages of below-slab vapor protection in a building do not begin and end with protecting the floor covering and its inhabitants; many items stored on top of concrete slabs can act like flooring materials, trapping moisture and subsequently being adversely affected by the resulting condensation. In storage facilities and warehouses, the impact moisture vapor can have on expensive inventory (in addition to issues with the slab itself) is a significant concern for building owners. Protecting your foundation before concrete placement with Stego Wrap increases the adaptability of a facility for future use. This can increase the flexibility and desirability of a site for a potential buyer with designs to convert the facility for a different purpose.



Limits Liability: Flooring failures and other problems inflicted upon a building and its inhabitants that arise from the migration of water vapor or soil gases could raise questions of liability. Failures lead to finger pointing. A below-slab vapor barrier like Stego Wrap can help stop the drive of water vapor upward and into your building envelope, thus reducing those liability concerns.



Improves Indoor Air Quality: Stego Wrap Vapor Barriers can improve indoor air quality and limit health concerns by helping to prevent moisture, an ingredient essential to mold growth, from penetrating into the building envelope. Likewise, by impeding soil gases, like radon, and preventing the breakdown of VOC-releasing flooring adhesives, Stego Wrap helps to keep the air in the building free of chemicals of concern.



Contributes to an Efficient Building: The more the HVAC system in a building is working, the more money spent in electricity costs. Under-slab moisture diffusing into a building interior can add to the latent load reducing efficiency. That's one reason (among many) why multiple green building codes require a high-performance vapor barrier under the slabs on and below grade. A more energy-efficient building is better for the environment and the bottom line.



Builds a Reputation: There is only one chance to make the right decision for the below-slab vapor protection — before the concrete is placed. Choosing to select and install a high-performance vapor barrier to last the lifetime of a building will help save project and installation teams from all kinds of headaches and added expenses in the future. Stego offers a first-of-its-kind **Life of the Building™ Warranty** for its line of Stego Wrap Vapor Barriers and Retarders.

Warranty available online at stegoindustries.com/legal

Stay up-to-date with industry-relevant resources and articles.

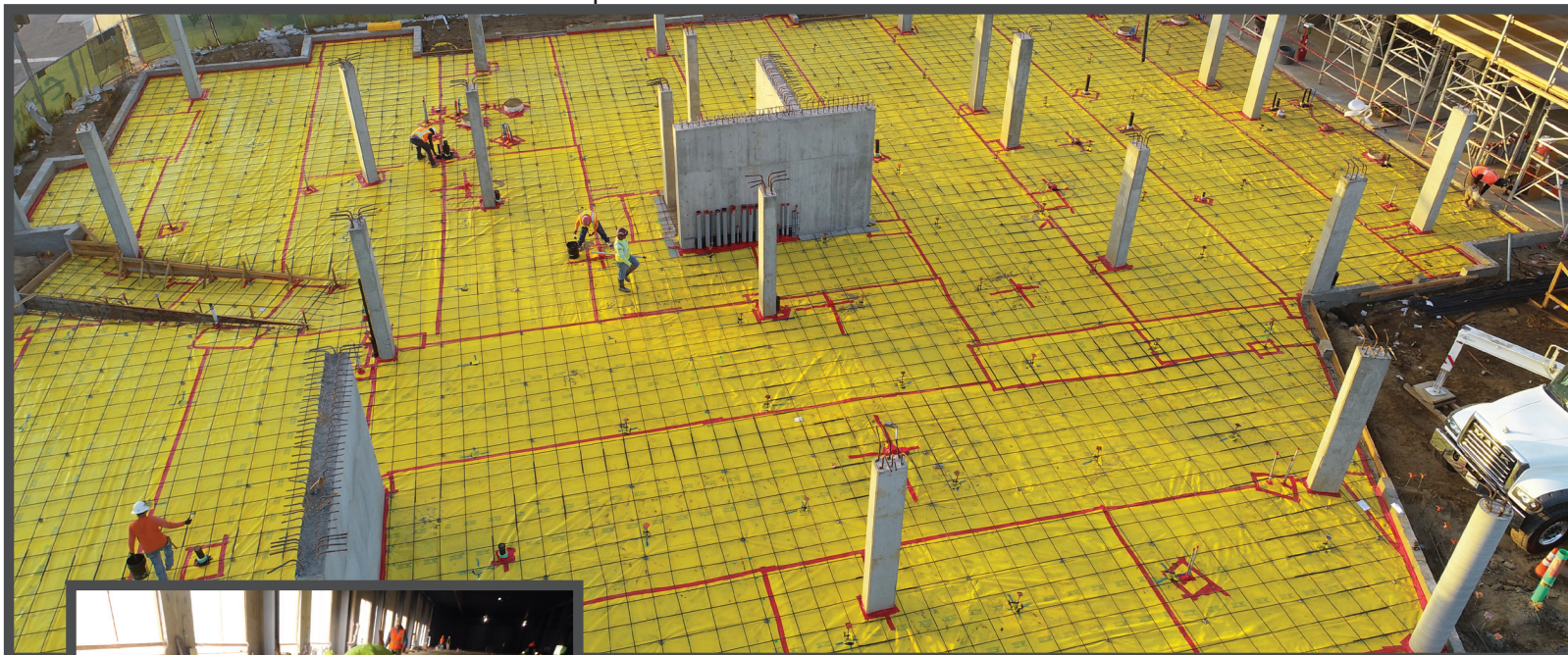
stegoindustries.com/blog



THE STEGO FULL LINE OF ENGINEERED ACCESSORY PRODUCTS

Everything you need
to complete an
installation that meets
ASTM E1643

Stego also offers the accessories needed to help meet the installation requirements of ASTM E1643. The following accessories have been engineered to be used in conjunction with Stego Wrap Vapor Barriers and Retarders: **Stego Tape**, **Stego Crete Claw Tape**, **Stego Mastic**, **StegoTack Tape**, and **Stego Term Bar**. Using these products enables an efficient installation, saving time and resources while maintaining the integrity of the vapor barrier system.



STEGO® TAPE

A low-permeance tape designed for sealing Stego Wrap seams and penetrations. Stego Tape sticks well to many surfaces, including plastic, wood, and steel.

- Extremely strong yet repositionable when applying
- Leaves little to no residue
- Low water vapor permeance
- Excellent sealing properties
- Pinked edge makes it easy to tear it straight, when and where you want to
- Cold temperature stability
- Low VOCs



THE STEGO FULL LINE OF ENGINEERED ACCESSORY PRODUCTS

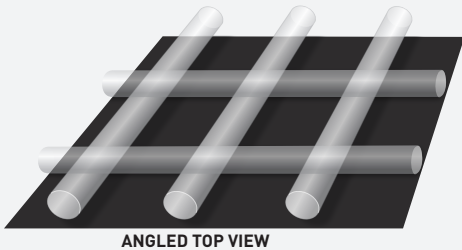


STEGO® CRETE CLAW® TAPE

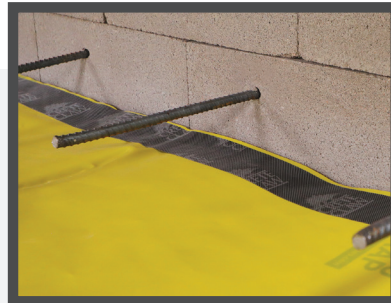
What Is It?

- An innovative and economical way to seal Stego® Wrap to the concrete subsequently placed against it
- Forms a mechanical bond and seal between Stego Wrap and the fresh concrete
- Quick and easy to install sealing tape that helps meet ASTM E1643 requirements – seal terminating edge of Stego Wrap
- The cost-effective, least labor-intensive, and most versatile method for sealing the perimeter edges of Stego Wrap

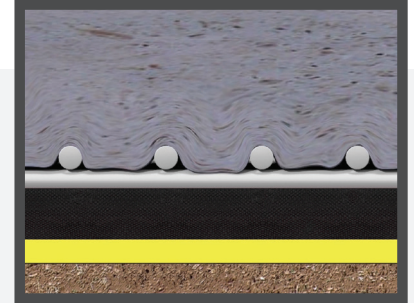
How Does It Work?



The top of Stego Crete Claw Tape (the non-adhesive side) has a patented design that allows wet concrete to cast into the textured surface.



Stick the adhesive side of Stego Crete Claw Tape to Stego Wrap. The textured surface should be visible prior to concrete placement.



Pour fresh concrete directly onto the textured surface of Stego Crete Claw Tape. As the concrete cures the Stego Crete Claw Tape will remain sealed in place.

When Do I Use It?

APPLICATION	DESCRIPTION	3" Wide	6" Wide
Sealing Terminating Edges	Create a seal at the terminating edges of Stego Wrap per ASTM E1643	✓ PRO'S CHOICE	✓
Expansive/Settling Soils; Carton/Void Form	Secure the Stego Wrap joints and seams to the underside of the concrete slab		✓

For complete instructions and tips on how to install Stego Crete Claw Tape efficiently and effectively, please refer to the Stego Wrap detailed installation instructions. For carton/void form projects please contact us for installation instructions specific to using Stego Crete Claw Tape 6".



STEGO CRETE CLAW TAPE 3"



STEGO CRETE CLAW TAPE 6"



THE STEGO FULL LINE OF ENGINEERED ACCESSORY PRODUCTS



STEGO® MASTIC

A liquid-applied vapor retardant membrane ideal for sealing permanent penetrations and terminating edges of Stego Wrap.

- Time-saving aid in achieving an installation per ASTM E1643
- Quickly seals around individual or clusters of pipe penetrations in close proximity
- Easy application from sausage tubes with a standard sausage gun and/or from pails by brush, roller, trowel, or disposable glove
- Water-based, trowel-grade asphaltic emulsion

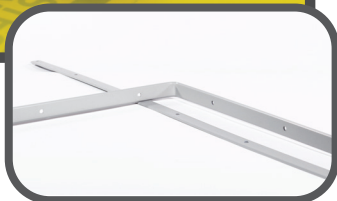
2-GALLON, 5-GALLON, AND 20-OUNCE SAUSAGE TUBES



STEGOTACK® TAPE

A double-sided adhesive strip used to bond and seal Stego Wrap to concrete, masonry, wood, metal, and other surfaces.

- Flexible and moldable material makes it easy to apply to many surfaces
- Aggressive adhesion
- No VOCs, 100% solids
- Low permeance to water vapor



STEGO® TERM BAR

A semi-flexible plastic termination bar, optimal for mechanically securing Stego Wrap to concrete, wood, or masonry.

- Pre-drilled holes every 6" for easy installation
- Creates a pocket/lip for a bead of caulk to be used
- Flexible for use on and around corners
- Use with StegoTack Tape or Stego Mastic to securely seal the terminating edge of Stego Wrap



KEEP AN EYE ON EFFICIENCY® WITH BEAST® CONCRETE ACCESSORIES

VAPOR BARRIER SAFE!

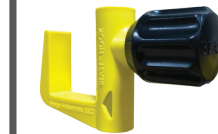


Beast® Screed is a fixed-elevation, point-to-point guide screed system designed to replace common wet-screed methods.



Now concrete placement crews can utilize the Beast Screed System on elevated deck pours with **Beast® Deck Foot**.

Improve efficiency and maintain concrete floor levelness with the Beast Screed System!



Beast® Hook is a **faster, easier** way to set 2x4 overhead screeds. Use Beast® Foot and Beast Form Stake and make it a vapor barrier-safe screed system.

Locate it and lock it down!



Beast® Form Stake can be used with Beast Foot as part of the Stego vapor barrier-safe forming system which meets ASTM E1643 requirements.

Preventing punctures in the vapor barrier.



How can we assist with your upcoming projects?

LET'S TALK.

877-464-7834 | stegoindustries.com





STEGO® WRAP 15-MIL VAPOR BARRIER

A STEGO INDUSTRIES, LLC INNOVATION | VAPOR RETARDERS 07 26 00, 03 30 00 | VERSION: JAN 28, 2025

1. PRODUCT NAME

STEGO WRAP 15-MIL VAPOR BARRIER

2. MANUFACTURER

Stego Industries, LLC
216 Avenida Fabricante, Suite 101
San Clemente, CA 92672
Sales, Technical Assistance
Ph: (877) 464-7834
contact@stegoindustries.com
stegoindustries.com



3. PRODUCT DESCRIPTION

USES: Stego Wrap 15-Mil Vapor Barrier is used as a below-slab vapor barrier.

COMPOSITION: Stego Wrap 15-Mil Vapor Barrier is a multi-layer plastic extrusion manufactured with only high grade prime, virgin, polyolefin resins.

ENVIRONMENTAL FACTORS: Stego Wrap 15-Mil Vapor Barrier can be used in systems for the control of soil gases (radon), and sulfates.

4. TECHNICAL DATA

TABLE 1: PHYSICAL PROPERTIES OF STEGO WRAP 15-MIL VAPOR BARRIER

PROPERTY	TEST	RESULTS
Under Slab Vapor Retarders	ASTM E1745 Class A, B & C – Standard Specification for Water Vapor Retarders Used in Contact with Soil or Granular Fill under Concrete Slabs	Exceeds Class A, B & C
Water Vapor Permeance	ASTM F1249 – Test Method for Water Vapor Transmission Rate Through Plastic Film and Sheeting Using a Modulated Infrared Sensor	0.0086 perms
Permeance After Conditioning (ASTM E1745 Sections 7.1.2 - 7.1.5)	ASTM E154 Section 8, F1249 – Permeance after wetting, drying, and soaking ASTM E154 Section 11, F1249 – Permeance after heat conditioning ASTM E154 Section 12, F1249 – Permeance after low temperature conditioning ASTM E154 Section 13, F1249 – Permeance after soil organism exposure	0.0098 perms 0.0091 perms 0.0097 perms 0.0095 perms
Methane Transmission Rate	ASTM D1434 – Standard Test Method for Determining Gas Permeability Characteristics of Plastic Film and Sheeting	192.8 GTR* (mL(STP)/m ² *day)
Radon Diffusion Coefficient	K124/02/95	8.8 x 10 ⁻¹² m ² /second
Puncture Resistance	ASTM D1709 – Test Method for Impact Resistance of Plastic Film by Free-Falling Dart Method	2,266 grams
Tensile Strength	ASTM D882 – Test Method for Tensile Properties of Thin Plastic Sheeting	70.6 lbf/in
Thickness		15 mil
Roll Dimensions		width x length: area: 14' x 140' 1,960 ft ²
Roll Weight		147 lb

Note: perm unit = grains/(ft²*hr*in-Hg)

*GTR = Gas Transmission Rate

Continued...

Note – legal notice on page 2.

STEGO® WRAP 15-MIL VAPOR BARRIER

A STEGO INDUSTRIES, LLC INNOVATION | VAPOR RETARDERS 07 26 00, 03 30 00 | VERSION: JAN 28, 2025

5. INSTALLATION

UNDER SLAB: Unroll Stego Wrap 15-Mil Vapor Barrier over an aggregate, sand, or tamped earth base. Overlap all seams a minimum of 6 inches and tape using Stego® Tape or Stego® Crete Claw® Tape. All penetrations must be sealed using a combination of Stego Wrap and Stego accessories.

Stego Wrap should be installed below 110°F. Do not exceed 7 days between Stego Wrap installation and concrete placement or full protection from UV and weather exposure. Please review technical data sheets for Stego accessory products for installation/application temperature ranges.

For additional information, please refer to Stego's complete installation instructions.

6. AVAILABILITY & COST

Stego Wrap 15-Mil Vapor Barrier is available through our network of building supply distributors. For current cost information, contact your local Stego® distributor or Stego Sales Representative.

7. WARRANTY

Stego believes to the best of its knowledge, that specifications and recommendations herein are accurate and reliable. However, since site conditions are not within its control, Stego does not guarantee results from the use of the information provided herein. Stego does offer a limited warranty on Stego Wrap 15-Mil Vapor Barrier. Please see stegoindustries.com/legal

8. MAINTENANCE AND STORAGE

Maintenance: Inspect after installation. Repair visible damage with Stego Tape or recommended accessories.

Storage and Handling: Store in original packaging in a cool, dry place. Handle with care to avoid damage.

Please refer to the Safety Data Sheet (SDS) for detailed safety, storage, and handling procedures.

9. TECHNICAL SERVICES

Technical advice, custom CAD drawings, and additional information can be obtained by contacting Stego or by visiting the website.

Email: contact@stegoindustries.com

Contact Number: (877) 464-7834

Website: stegoindustries.com

10. FILING SYSTEMS: stegoindustries.com





STEGO® WRAP 20-MIL VAPOR BARRIER

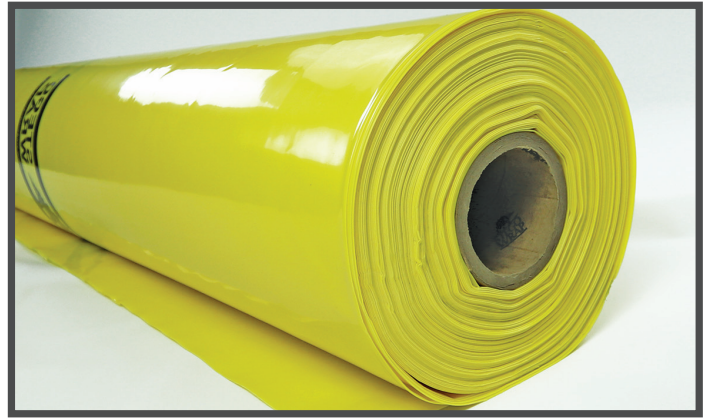
A STEGO INDUSTRIES, LLC INNOVATION | VAPOR RETARDERS 07 26 00, 03 30 00 | VERSION: JAN 28, 2025

1. PRODUCT NAME

STEGO WRAP 20-MIL VAPOR BARRIER

2. MANUFACTURER

Stego Industries, LLC
216 Avenida Fabricante, Suite 101
San Clemente, CA 92672 USA
Sales, Technical Assistance
Ph: (877) 464-7834
contact@stegoindustries.com
stegoindustries.com



3. PRODUCT DESCRIPTION

USES: Stego Wrap 20-Mil Vapor Barrier is used as a below-slab vapor barrier.

COMPOSITION: Stego Wrap 20-Mil Vapor Barrier is a multi-layer plastic extrusion manufactured with only the highest grade of prime, virgin, polyolefin resins.

ENVIRONMENTAL FACTORS: Stego Wrap 20-Mil Vapor Barrier can be used in systems for the control of soil gases (radon), and sulfates.

4. TECHNICAL DATA

TABLE 4.1: PHYSICAL PROPERTIES OF STEGO WRAP 20-MIL VAPOR BARRIER

PROPERTY	TEST	RESULTS
Under Slab Vapor Retarders	ASTM E1745 Class A, B & C – Standard Specification for Water Vapor Retarders Used in Contact with Soil or Granular Fill under Concrete Slabs	Exceeds Class A, B & C
Water Vapor Permeance	ASTM F1249 – Test Method for Water Vapor Transmission Rate Through Plastic Film and Sheeting Using a Modulated Infrared Sensor	0.0071 perms
Permeance After Conditioning (ASTM E1745 Sections 7.1.2 - 7.1.5)	ASTM E154 Section 8, F1249 – Permeance after wetting, drying, and soaking ASTM E154 Section 11, F1249 – Permeance after heat conditioning ASTM E154 Section 12, F1249 – Permeance after low temperature conditioning ASTM E154 Section 13, F1249 – Permeance after soil organism exposure	0.0088 perms 0.0081 perms 0.0084 perms 0.0077 perms
Methane Transmission Rate	ASTM D1434 - Standard Test Method for Determining Gas Permeability Characteristics of Plastic Film and Sheeting	152.2 GTR* (mL(STPI)/m ² *day)
Radon Diffusion Coefficient	K124/02/95	9.9 x 10 ⁻¹² m ² /second
Puncture Resistance	ASTM D1709 – Test Method for Impact Resistance of Plastic Film by Free-Falling Dart Method	3500+ grams**
Tensile Strength	ASTM D882 – Test Method for Tensile Properties of Thin Plastic Sheeting	97.7 lbf/in
Thickness		20 mil
Roll Dimensions		width x length: area: 14' x 105' 1470 ft ²
Roll Weight		152 lb

Note: perm unit = grains/(ft²*hr*in-Hg)

*GTR = Gas Transmission Rate

**The material maxed out the testing equipment and did not fail at 3746 grams.

Continued...

Note – legal notice on page 2.

STEGO® WRAP 20-MIL VAPOR WRAP BARRIER

A STEGO INDUSTRIES, LLC INNOVATION | VAPOR RETARDERS 07 26 00, 03 30 00 | VERSION: JAN 28, 2025

5. INSTALLATION

UNDER SLAB: Unroll Stego Wrap 20-Mil Vapor Barrier over an aggregate, sand, or tamped earth base. Overlap all seams a minimum of 6 inches and tape using Stego® Tape or Stego® Crete Claw® Tape. All penetrations must be sealed using a combination of Stego Wrap and Stego accessories.

Stego Wrap should be installed below 110°F. Do not exceed 7 days between Stego Wrap installation and concrete placement or full protection from UV and weather exposure. Please review technical data sheets for Stego accessory products for installation/application temperature ranges.

For additional information, please refer to Stego's complete installation instructions.

6. AVAILABILITY & COST

Stego Wrap 20-Mil Vapor Barrier is available through our network of building supply distributors. For current cost information, contact your local Stego® distributor or Stego Sales Representative.

7. WARRANTY

Stego believes to the best of its knowledge, that specifications and recommendations herein are accurate and reliable. However, since site conditions are not within its control, Stego does not guarantee results from the use of the information provided herein. Stego does offer a limited warranty on Stego Wrap 20-Mil Vapor Barrier. Please see stegoindustries.com/legal

8. MAINTENANCE AND STORAGE

Maintenance: Inspect after installation. Repair visible damage with Stego Tape or recommended accessories.

Storage and Handling: Store in original packaging in a cool, dry place. Handle with care to avoid damage.

Please refer to the Safety Data Sheet (SDS) for detailed safety, storage, and handling procedures.

9. TECHNICAL SERVICES

Technical advice, custom CAD drawings, and additional information can be obtained by contacting Stego or by visiting the website.

Email: contact@stegoindustries.com

Contact Number: (877) 464-7834

Website: stegoindustries.com

10. FILING SYSTEMS: stegoindustries.com





STEGO® WRAP 10-MIL CLASS C VAPOR RETARDER

A STEGO INDUSTRIES, LLC INNOVATION | VAPOR RETARDERS 07 26 00, 03 30 00 | VERSION: JAN 28, 2025

1. PRODUCT NAME

STEGO WRAP 10-MIL CLASS C VAPOR RETARDER

2. MANUFACTURER

Stego Industries, LLC
216 Avenida Fabricante, Suite 101
San Clemente, CA 92672
Sales, Technical Assistance
Ph: (877) 464-7834
contact@stegoindustries.com
stegoindustries.com



3. PRODUCT DESCRIPTION

USES: Stego Wrap 10-Mil Class C Vapor Retarder is used as an exceptional vapor retarder.

COMPOSITION: Stego Wrap 10-Mil Class C Vapor Retarder is a multi-layer plastic extrusion manufactured with only high grade prime, virgin, polyolefin resins.

ENVIRONMENTAL FACTORS: Stego Wrap 10-Mil Class C Vapor Retarder can be used in systems for the control of soil gases (radon), and sulfates.

4. TECHNICAL DATA

TABLE 1: PHYSICAL PROPERTIES OF STEGO WRAP 10-MIL CLASS C VAPOR RETARDER

PROPERTY	TEST	RESULTS
Under Slab Vapor Retarders	ASTM E1745 Class A, B & C – Standard Specification for Water Vapor Retarders Used in Contact with Soil or Granular Fill under Concrete Slabs	Exceeds Class C
Water Vapor Permeance	ASTM F1249 – Test Method for Water Vapor Transmission Rate Through Plastic Film and Sheeting Using a Modulated Infrared Sensor	0.0209 perms
Permeance After Conditioning (ASTM E1745 Sections 7.1.2 - 7.1.5)	ASTM E154 Section 8, F1249 – Permeance after wetting, drying, and soaking ASTM E154 Section 11, F1249 – Permeance after heat conditioning ASTM E154 Section 12, F1249 – Permeance after low temperature conditioning ASTM E154 Section 13, F1249 – Permeance after soil organism exposure	0.0226 perms 0.0222 perms 0.0214 perms 0.0214 perms
Puncture Resistance	ASTM D1709 – Test Method for Impact Resistance of Plastic Film by Free-Falling Dart Method	1,286 grams
Tensile Strength	ASTM D882 – Test Method for Tensile Properties of Thin Plastic Sheeting	49.2 lbf/in
Thickness		10 mil
Roll Dimensions	width x length: area:	14' x 210' 2,940 ft ²
Roll Weight		146 lb

Note: perm unit = grains/(ft²*hr*in-Hg)

Continued...

Note – legal notice on page 2.

STEGO® WRAP 10-MIL CLASS C VAPOR RETARDER

A STEGO INDUSTRIES, LLC INNOVATION | VAPOR RETARDERS 07 26 00, 03 30 00 | VERSION: JAN 28, 2025

5. INSTALLATION

UNDER SLAB: Unroll Stego Wrap 10-Mil Class C Vapor Retarder over an aggregate, sand, or tamped earth base. Overlap all seams a minimum of 6 inches and tape using Stego® Tape or Stego® Crete Claw® Tape. All penetrations must be sealed using a combination of Stego Wrap 10-Mil Class C Vapor Retarder and Stego accessories.

Stego Wrap should be installed below 110°F. Do not exceed 7 days between Stego Wrap installation and concrete placement or full protection from UV and weather exposure. Please review technical data sheets for Stego accessory products for installation/application temperature ranges.

For additional information, please refer to Stego's complete installation instructions.

6. AVAILABILITY & COST

Stego Wrap 10-Mil Class C Vapor Retarder is available through our network of building supply distributors. For current cost information, contact your local Stego® distributor or Stego Sales Representative.

7. WARRANTY

Stego believes to the best of its knowledge, that specifications and recommendations herein are accurate and reliable. However, since site conditions are not within its control, Stego does not guarantee results from the use of the information provided herein. Stego does offer a limited warranty on Stego Wrap 10-Mil Class C Vapor Retarder. Please see stegoindustries.com/legal

8. MAINTENANCE AND STORAGE

Maintenance: Inspect after installation. Repair visible damage with Stego Tape or recommended accessories.
Storage and Handling: Store in original packaging in a cool, dry place. Handle with care to avoid damage.

Please refer to the Safety Data Sheet (SDS) for detailed safety, storage, and handling procedures.

9. TECHNICAL SERVICES

Technical advice, custom CAD drawings, and additional information can be obtained by contacting Stego or by visiting the website.

Email: contact@stegoindustries.com

Contact Number: (877) 464-7834

Website: stegoindustries.com

10. FILING SYSTEMS: stegoindustries.com





STEGO® WRAP 10-MIL CLASS A VAPOR RETARDER

A STEGO INDUSTRIES, LLC INNOVATION | VAPOR RETARDERS 07 26 00, 03 30 00 | VERSION: JAN 28, 2025

1. PRODUCT NAME

STEGO WRAP 10-MIL CLASS A VAPOR RETARDER

2. MANUFACTURER

Stego Industries, LLC
216 Avenida Fabricante, Suite 101
San Clemente, CA 92672
Sales, Technical Assistance
Ph: (877) 464-7834
contact@stegoindustries.com
stegoindustries.com



3. PRODUCT DESCRIPTION

USES: Stego Wrap 10-Mil Class A Vapor Retarder is used as an exceptional vapor retarder, and as a protection course for below grade waterproofing applications.

COMPOSITION: Stego Wrap 10-Mil Class A Vapor Retarder is a multi-layer plastic extrusion manufactured with only high grade prime, virgin, polyolefin resins.

ENVIRONMENTAL FACTORS: Stego Wrap 10-Mil Class A Vapor Retarder can be used in systems for the control of soil gases (radon), and sulfates.

4. TECHNICAL DATA

TABLE 1: PHYSICAL PROPERTIES OF STEGO WRAP 10-MIL CLASS A VAPOR RETARDER

PROPERTY	TEST	RESULTS
Under Slab Vapor Retarders	ASTM E1745 Class A, B & C – Standard Specification for Water Vapor Retarders Used in Contact with Soil or Granular Fill under Concrete Slabs	Exceeds Class A, B & C
Water Vapor Permeance	ASTM F1249 – Test Method for Water Vapor Transmission Rate Through Plastic Film and Sheeting Using a Modulated Infrared Sensor	0.0254 perms
Permeance After Conditioning (ASTM E1745 Sections 7.1.2 - 7.1.5)	ASTM E154 Section 8, F1249 – Permeance after wetting, drying, and soaking ASTM E154 Section 11, F1249 – Permeance after heat conditioning ASTM E154 Section 12, F1249 – Permeance after low temperature conditioning ASTM E154 Section 13, F1249 – Permeance after soil organism exposure	0.0258 perms 0.0259 perms 0.0241 perms 0.0245 perms
Puncture Resistance	ASTM D1709 – Test Method for Impact Resistance of Plastic Film by Free-Falling Dart Method	3,006 grams
Tensile Strength	ASTM D882 – Test Method for Tensile Properties of Thin Plastic Sheeting	50.6 lbf/in
Thickness		10 mil
Roll Dimensions	width x length: area:	14' x 210' 2,940 ft ²
Roll Weight		146 lb

Note: perm unit = grains/(ft²*hr*in-Hg)

STEGO® WRAP 10-MIL CLASS A VAPOR RETARDER

A STEGO INDUSTRIES, LLC INNOVATION | VAPOR RETARDERS 07 26 00, 03 30 00 | VERSION: JAN 28, 2025

5. INSTALLATION

UNDER SLAB: Unroll Stego Wrap 10-Mil Class A Vapor Retarder over an aggregate, sand, or tamped earth base. Overlap all seams a minimum of 6 inches and tape using Stego® Tape or Stego® Crete Claw® Tape. All penetrations must be sealed using a combination of Stego Wrap 10-Mil Class A Vapor Retarder and Stego accessories.

Stego Wrap should be installed below 110°F. Do not exceed 7 days between Stego Wrap installation and concrete placement or full protection from UV and weather exposure. Please review technical data sheets for Stego accessory products for installation/application temperature ranges.

For additional information, please refer to Stego's complete installation instructions.

6. AVAILABILITY & COST

Stego Wrap 10-Mil Class A Vapor Retarder is available through our network of building supply distributors. For current cost information, contact your local Stego® distributor or Stego Sales Representative.

7. WARRANTY

Stego believes to the best of its knowledge, that specifications and recommendations herein are accurate and reliable. However, since site conditions are not within its control, Stego does not guarantee results from the use of the information provided herein. Stego does offer a limited warranty on Stego Wrap 10-Mil Class A Vapor Retarder. Please see stegoindustries.com/legal

8. MAINTENANCE AND STORAGE

Maintenance: Inspect after installation. Repair visible damage with Stego Tape or recommended accessories.

Storage and Handling: Store in original packaging in a cool, dry place. Handle with care to avoid damage.

Please refer to the Safety Data Sheet (SDS) for detailed safety, storage, and handling procedures.

9. TECHNICAL SERVICES

Technical advice, custom CAD drawings, and additional information can be obtained by contacting Stego or by visiting the website.

Email: contact@stegoindustries.com

Contact Number: (877) 464-7834

Website: stegoindustries.com

10. FILING SYSTEMS: stegoindustries.com





STEGO® MASTIC

A STEGO INDUSTRIES, LLC INNOVATION | VAPOR RETARDERS 07 26 00, 03 30 00 | VERSION: JAN 28, 2025

1. PRODUCT NAME

STEGO MASTIC

2. MANUFACTURER

Stego Industries, LLC
216 Avenida Fabricante, Suite 101
San Clemente, CA 92672
Sales, Technical Assistance
Ph: (877) 464-7834
contact@stegoindustries.com
stegoindustries.com



3. PRODUCT DESCRIPTION

USES: Stego Mastic is designed to be used as a vapor retardant membrane for use in conjunction with Stego® Wrap. Stego Mastic can be used for sealing utility and pipe penetrations in Stego Wrap.

COMPOSITION: Stego Mastic is a medium viscosity, water-based, polymer-modified anionic bituminous/asphalt emulsion.

SIZE: Stego Mastic comes in 2-gallon or 5-gallon pails, and 20-ounce sausage tubes.

4. TECHNICAL DATA

TABLE 1: PHYSICAL PROPERTIES OF STEGO MASTIC

PROPERTY	TEST	RESULTS
Permeance Rating	ASTM E96	0.08 perms
Tensile Strength	ASTM D412	87 psi
Elongation	ASTM D412	1800%
Adhesion to Concrete	ASTM C836	Exceeds
Shore Hardness	ASTM C836	75
Crack Bridging	ASTM C836	Exceeds
Low Temp Flexibility	ASTM C836	No Cracking
VOC Content		<16 g/L

Note: perm unit = grains/(ft²*hr*in-Hg)

STEGO® MASTIC

A STEGO INDUSTRIES, LLC INNOVATION | VAPOR RETARDERS 07 26 00, 03 30 00 | VERSION: JAN 28, 2025

5. INSTALLATION

PREPARATION:

- A test application simulating the project environment should always be done prior to final usage of Stego Mastic.
- All surfaces should be dry and free of loose materials, oils, and other contaminants. The surfaces should be cleaned in the same fashion as the test surface in order to ensure proper results.

PENETRATIONS:

To repair penetrations in Stego Wrap, cut Stego Wrap just big enough to fit over and around the penetration so as to minimize void space. Liberally apply Stego Mastic around the penetration to keep the integrity of the membrane intact. Stego Mastic can be applied from sausage tubes with a standard sausage gun and/or from pails by brush, roller, or trowel.

NOTES: 1) If needed to minimize void space around penetrations, utilize a detail patch of Stego Wrap or Stego® Pre-Cut Pipe Boot to fit over the penetration and seal the patch/boot with Stego® Tape prior to applying Stego Mastic. 2) Solvent-based products should not be applied over this product. 3) Clean all tools with kerosene and/or oil-based cleaners.

Stego Mastic should be installed above 40°F. In temperatures below 40°F take extra care to remove moisture or frost from the area of adhesion. Do not exceed 7 days between Stego Mastic installation and concrete placement or full protection from UV and weather exposure.

For additional information, please refer to Stego's complete installation instructions.

6. AVAILABILITY & COST

Stego Mastic is available through our network of building supply distributors. For current cost information, contact your local Stego® distributor or Stego Sales Representative.

7. WARRANTY

Stego believes to the best of its knowledge, that specifications and recommendations herein are accurate and reliable. However, since site conditions are not within its control, Stego does not guarantee results from the use of the information provided herein. Stego does offer a limited warranty on Stego Mastic. Please see stegoindustries.com/legal

8. MAINTENANCE AND STORAGE

Maintenance: None required.

Storage and Handling: Store between 40°F and 100°F.

Please refer to the Safety Data Sheet (SDS) for detailed safety, storage, and handling procedures.

9. TECHNICAL SERVICES

Technical advice, custom CAD drawings, and additional information can be obtained by contacting Stego or by visiting the website.

Email: contact@stegoindustries.com

Contact Number: (877) 464-7834

Website: stegoindustries.com

10. FILING SYSTEMS: stegoindustries.com





STEGO® TAPE

A STEGO INDUSTRIES, LLC INNOVATION | VAPOR RETARDERS 07 26 00, 03 30 00 | VERSION: JAN 28, 2025

1. PRODUCT NAME

STEGO TAPE

2. MANUFACTURER

Stego Industries, LLC
216 Avenida Fabricante, Suite 101
San Clemente, CA 92672
Sales, Technical Assistance
Ph: (877) 464-7834
contact@stegoindustries.com
stegoindustries.com



3. PRODUCT DESCRIPTION

USES: Stego Tape is a low-permeance tape designed for protective sealing, hanging, seaming, splicing, and patching applications where a highly conformable material is required. It has been engineered to bond specifically to Stego® Wrap, making it ideal for sealing Stego Wrap seams and penetrations.

COMPOSITION: Stego Tape is composed of polyethylene film and an acrylic, pressure-sensitive adhesive.

SIZE: Stego Tape is 3.75" x 180'. Stego Tape ships 12 rolls in a case.

4. TECHNICAL DATA

APPLICABLE STANDARDS:

American Society for Testing & Materials (ASTM)

- ASTM E1643 - Standard Practice for Selection, Design, Installation, and Inspection of Water Vapor Retarders Used in Contact with Earth or Granular Fill Under Concrete Slabs

TABLE 4.1: PHYSICAL PROPERTIES OF STEGO TAPE

PROPERTY	RESULTS
Dimensions	3.75" x 180'
Total Thickness	6 mil
Permeance	0.03 perms
Tensile Strength @ Yield	>12 lbf/in
Adhesion (20 min dwell ss, PSTC 101)	84 oz/in
Ultraviolet Resistance	Excellent

Note: perm unit = grains/(ft²*hr*in-Hg)

STEGO® TAPE

A STEGO INDUSTRIES, LLC INNOVATION | VAPOR RETARDERS 07 26 00, 03 30 00 | VERSION: JAN 28, 2025

5. INSTALLATION

SEAMS: Overlap Stego Wrap 6 inches and seal with Stego Tape. Make sure the area of adhesion is free from dust, dirt, moisture, and frost to allow maximum adhesion of the pressure sensitive tape.

PIPE PENETRATION SEALING

- 1) Install Stego Wrap around pipe by slitting/cutting material
- 2) If void space around pipe is minimal, seal around base of pipe with Stego Tape (Stego® Mastic can be used for additional coverage)

DETAIL PATCH FOR PIPE PENETRATION SEALING

- 1) Cut a piece of Stego Wrap that creates a 6 inch overlap around all edges of the void space
- 2) Cut an "X" in the center of the detail patch
- 3) Slide detail patch over pipe, secure tightly
- 4) Tape down all sides of detail patch with Stego Tape
- 5) Seal around base of pipe with Stego Tape (Stego Mastic can be used for additional coverage)

Stego Tape should be installed above 40°F. In temperatures below 40°F take extra care to remove moisture or frost from the area of adhesion. Do not exceed 7 days between Stego Tape installation and concrete placement or full protection from UV and weather exposure.

For additional information, please refer to Stego's complete installation instructions.

6. AVAILABILITY & COST

Stego Tape is available through our network of building supply distributors. For current cost information, contact your local Stego® distributor or Stego Sales Representative.

7. WARRANTY

Stego believes to the best of its knowledge, that specifications and recommendations herein are accurate and reliable. However, since site conditions are not within its control, Stego does not guarantee results from the use of the information provided herein. Stego does offer a limited warranty on Stego Tape. Please see stegoindustries.com/legal

8. MAINTENANCE AND STORAGE

Maintenance: Check post-application. Replace or overlay areas that show wear.

Storage and Handling: Store in original packaging in cool, dry conditions. Ensure surfaces for application are clean for best adhesion.

Please refer to the Safety Data Sheet (SDS) for detailed safety, storage, and handling procedures.

9. TECHNICAL SERVICES

Technical advice, custom CAD drawings, and additional information can be obtained by contacting Stego or by visiting the website.

Email: contact@stegoindustries.com

Contact Number: (877) 464-7834

Website: stegoindustries.com

10. FILING SYSTEMS: stegoindustries.com





STEGO® CRETE CLAW® TAPE (3" wide)

A STEGO INDUSTRIES, LLC INNOVATION | VAPOR RETARDERS 07 26 00, 03 30 00 | VERSION: JAN 28, 2025

1. PRODUCT NAME

STEGO CRETE CLAW TAPE (3" wide)

2. MANUFACTURER

Stego Industries, LLC
216 Avenida Fabricante, Suite 101
San Clemente, CA 92672
Sales, Technical Assistance
Ph: (877) 464-7834
contact@stegoindustries.com
stegoindustries.com



3. PRODUCT DESCRIPTION

USES: Stego Crete Claw Tape is a multi-layered tape that is used to seal Stego® Wrap to the perimeter of the slab while the concrete is placed. Stego Crete Claw Tape allows wet concrete to cast into the textured top surface to form a mechanical bond/seal.

COMPOSITION: Stego Crete Claw Tape is composed of polyethylene film, polyolefin scrim, and an acrylic, pressure-sensitive adhesive.

SIZE: Stego Crete Claw Tape is 3" x 180'. Stego Crete Claw Tape (3" wide) ships 16 rolls in a case.

4. TECHNICAL DATA

TABLE 4.1: PHYSICAL PROPERTIES OF STEGO CRETE CLAW TAPE (3" wide)

PROPERTY	RESULTS
Dimensions	3" x 180'
Total Thickness	26 mil
Permeance: ASTM F1249	0.03 perms
D903	17.6 lbf/in
Shear Adhesion to Concrete: 1 in ² shear test	>49 lbf/in ² *

*Specimens failed by stretching vapor barrier to failure before pulling Stego Crete Claw Tape from concrete.

Note: perm unit = grains/(ft²*hr*in-Hg)

5. INSTALLATION

- Determine where Stego Wrap should be terminated and Stego Crete Claw Tape should be installed. If it has not been clearly addressed in the construction documents, then clarification should be requested from the project design team. Should no direction be given, we recommend the project team follow the guidelines of ASTM E1643. Regardless of where the vapor barrier is determined to be terminated, ASTM E1643 requires the terminating edges to be sealed. Stego Crete Claw Tape will provide the seal upon subsequent placement of concrete.
- Ensure Stego Wrap is clean and dry when applying Stego Crete Claw Tape.
- Apply Stego Crete Claw Tape as close as possible to the terminating edge of Stego Wrap.
- Apply the entire width of Stego Crete Claw Tape only to Stego Wrap; do not lap it over the edge or attempt to adhere Stego Crete Claw Tape to footings, grade beams, stem walls, expansion materials, formwork, etc.

Continued...

Note – legal notice on page 2.

STEGO® CRETE CLAW® TAPE (3" wide)

A STEGO INDUSTRIES, LLC INNOVATION | VAPOR RETARDERS 07 26 00, 03 30 00 | VERSION: JAN 28, 2025

5. INSTALLATION *Continued...*

- Close open gaps between Stego Crete Claw Tape without overlapping the Stego Crete Claw Tape over itself.
- Do not use Stego Crete Claw Tape for sealing utility pipe penetrations.
- Install Stego Crete Claw Tape last for successful installation.
- Do not cover the textured surface of Stego Crete Claw Tape with Stego® Mastic, Stego® Tape, dust, dirt, or other materials/debris.

Stego Crete Claw Tape should be installed above 40°F. In temperatures below 40°F take extra care to remove moisture or frost from the area of adhesion. Do not exceed 7 days between Stego Crete Claw Tape installation and concrete placement or full protection from UV and weather exposure.

For additional information, please refer to the complete Stego Crete Claw Tape Installation Instructions.

6. AVAILABILITY & COST

Stego Crete Claw Tape is available through our network of building supply distributors. For current cost information, contact your local Stego® distributor or Stego Sales Representative.

7. WARRANTY

Stego believes to the best of its knowledge, that specifications and recommendations herein are accurate and reliable. However, since site conditions are not within its control, Stego does not guarantee results from the use of the information provided herein. Stego does offer a limited warranty on Stego Crete Claw Tape. Please see stegoindustries.com/legal

8. MAINTENANCE AND STORAGE

Maintenance: Check post-application. Replace or overlay areas that show wear.

Storage and Handling: Store in original packaging in cool, dry conditions. Ensure surfaces for application are clean for best adhesion.

Please refer to the Safety Data Sheet (SDS) for detailed safety, storage, and handling procedures.

9. TECHNICAL SERVICES

Technical advice, custom CAD drawings, and additional information can be obtained by contacting Stego or by visiting the website.

Email: contact@stegoindustries.com

Contact Number: (877) 464-7834

Website: stegoindustries.com

10. FILING SYSTEMS: stegoindustries.com





STEGO® CRETE CLAW® TAPE (6" wide)

A STEGO INDUSTRIES, LLC INNOVATION | VAPOR RETARDERS 07 26 00, 03 30 00 | VERSION: JAN 28, 2025

1. PRODUCT NAME

STEGO CRETE CLAW TAPE (6" wide)

2. MANUFACTURER

Stego Industries, LLC
216 Avenida Fabricante, Suite 101
San Clemente, CA 92672
Sales, Technical Assistance
Ph: (877) 464-7834
contact@stegoindustries.com
stegoindustries.com



3. PRODUCT DESCRIPTION

USES: Stego Crete Claw Tape is a multi-layered tape that is used to seal Stego® Wrap to the underside of the slab while the concrete is placed. Stego Crete Claw Tape allows wet concrete to cast into the textured top surface to form a mechanical bond/seal. This is useful in void/carton form applications and/or when soil movement may later occur.

COMPOSITION: Stego Crete Claw Tape is composed of polyethylene film, polyolefin scrim, and an acrylic, pressure-sensitive adhesive.

SIZE: Stego Crete Claw Tape is 6" x 180'. Stego Crete Claw Tape (6" wide) ships 8 rolls in a case.

4. TECHNICAL DATA

TABLE 4.1: PHYSICAL PROPERTIES OF STEGO CRETE CLAW TAPE (6" wide)

PROPERTY	RESULTS
Dimensions	6" x 180'
Total Thickness	26 mil
Permeance: ASTM F1249	0.03 perms
180° Adhesion Peel Strength: ASTM D903	17.6 lbf/in
Shear Adhesion to Concrete: 1 in ² shear test	>49 lbf/in ² *

*Specimens failed by stretching vapor barrier to failure before pulling Stego Crete Claw Tape from concrete.

Note: perm unit = grains/(ft²*hr*in-Hg)

5. INSTALLATION

- Determine where Stego Wrap should be terminated and Stego Crete Claw Tape should be installed. If it has not been clearly addressed in the construction documents, then clarification should be requested from the project design team. Should no direction be given, we recommend the project team follow the guidelines of ASTM E1643. Regardless of where the vapor barrier is determined to be terminated, ASTM E1643 requires the terminating edges to be sealed. Stego Crete Claw Tape will provide the seal upon subsequent placement of concrete.
- Ensure Stego Wrap is clean and dry when applying Stego Crete Claw Tape.
- Apply Stego Crete Claw Tape as close as possible to the terminating edge of Stego Wrap at perimeter applications and centered over seams in seaming applications.

Continued...

Note – legal notice on page 2.

STEGO® CRETE CLAW® TAPE (6" wide)

A STEGO INDUSTRIES, LLC INNOVATION | VAPOR RETARDERS 07 26 00, 03 30 00 | VERSION: JAN 28, 2025

5. INSTALLATION *Continued...*

- Apply the entire width of Stego Crete Claw Tape only to Stego Wrap; do not lap it over the edge or attempt to adhere Stego Crete Claw Tape to footings, grade beams, stem walls, expansion materials, formwork, etc.
- Close open gaps between Stego Crete Claw Tape without overlapping the Stego Crete Claw Tape over itself.
- Do not use Stego Crete Claw Tape for sealing utility pipe penetrations.
- Install Stego Crete Claw Tape last for successful installation.
- Do not cover the textured surface of Stego Crete Claw Tape with Stego® Mastic, Stego® Tape, dust, dirt, or other materials/debris.

Stego Crete Claw Tape should be installed above 40°F. In temperatures below 40°F take extra care to remove moisture or frost from the area of adhesion. Do not exceed 7 days between Stego Crete Claw Tape installation and concrete placement or full protection from UV and weather exposure.

For additional information, please refer to the complete Stego Crete Claw Tape Installation Instructions.

6. AVAILABILITY & COST

Stego Crete Claw Tape is available through our network of building supply distributors. For current cost information, contact your local Stego® distributor or Stego Sales Representative.

7. WARRANTY

Stego believes to the best of its knowledge, that specifications and recommendations herein are accurate and reliable. However, since site conditions are not within its control, Stego does not guarantee results from the use of the information provided herein. Stego does offer a limited warranty on Stego Crete Claw Tape. Please see stegoindustries.com/legal

8. MAINTENANCE AND STORAGE

Maintenance: Check post-application. Replace or overlay areas that show wear.

Storage and Handling: Store in original packaging in cool, dry conditions. Ensure surfaces for application are clean for best adhesion.

Please refer to the Safety Data Sheet (SDS) for detailed safety, storage, and handling procedures.

9. TECHNICAL SERVICES

Technical advice, custom CAD drawings, and additional information can be obtained by contacting Stego or by visiting the website.

Email: contact@stegoindustries.com

Contact Number: (877) 464-7834

Website: stegoindustries.com

10. FILING SYSTEMS: stegoindustries.com





STEGOTACK® TAPE

A STEGO INDUSTRIES, LLC INNOVATION | VAPOR RETARDERS 07 26 00, 03 30 00 | VERSION: JAN 28, 2025

1. PRODUCT NAME

STEGOTACK TAPE

2. MANUFACTURER

Stego Industries, LLC
216 Avenida Fabricante, Suite 101
San Clemente, CA 92672
Sales, Technical Assistance
Ph: (877) 464-7834
contact@stegoindustries.com
stegoindustries.com



3. PRODUCT DESCRIPTION

USES: StegoTack Tape is a double-sided adhesive strip used to bond and seal Stego® Wrap, StegoHome®, and StegoCrawl® Wrap to concrete, masonry, many foam insulation materials, metal, and other surfaces.

COMPOSITION: StegoTack Tape is made from a blend of synthetic rubber and resins.

SIZE: StegoTack Tape is 2" x 50'. StegoTack Tape ships 12 rolls in a case.

FEATURES AND BENEFITS:

- Highly flexible and moldable
- Low VOC Emissions - Certified Clean Air GOLD
- Made in the USA



The versatility of StegoTack Tape makes it an excellent option for Stego Wrap, StegoHome, and StegoCrawl installation applications.

4. TECHNICAL DATA

TABLE 4.1: PHYSICAL PROPERTIES OF STEGOTACK TAPE

PROPERTY	RESULTS
Dimensions	2" x 50'
Total Thickness	30 mil
Permeance (30 mil)	0.03 perms
Color	Grey
Material	Synthetic rubber blend
Adhesion to Steel	12.5 lb/in width ASTM D1000
Installation Temperature	40°F/110°F
In Service Temperature Range	-20°F/+140°F
VOC Content	No VOCs, 100% solids

Note: perm unit = grains/(ft²*hr*in-Hg)

Continued...

Note – legal notice on page 2.

STEGOTACK® TAPE

A STEGO INDUSTRIES, LLC INNOVATION | VAPOR RETARDERS 07 26 00, 03 30 00 | VERSION: JAN 28, 2025

5. INSTALLATION

TO WALLS: Make sure the area of adhesion is free of dust, dirt, debris, moisture, and frost to allow maximum adhesion. Remove release liner on one side and stick to desired surface. When ready to apply the vapor barrier or retarder, remove the exposed release liner and press the vapor barrier or retarder firmly against StegoTack Tape to secure.

Cut StegoTack Tape using a utility knife or scissors. Cut StegoTack Tape before removing the release liner for easier cutting.

Install StegoTack Tape between 40°F and 110°F. Do not exceed 7 days between StegoTack Tape installation and concrete placement or full protection from UV and weather exposure.

For additional information please refer to Stego's complete installation instructions.

6. AVAILABILITY & COST

StegoTack Tape is available through our network of building supply distributors. For current cost information, contact your local Stego® distributor or Stego Sales Representative.

7. WARRANTY

Stego believes to the best of its knowledge, that specifications and recommendations herein are accurate and reliable. However, since site conditions are not within its control, Stego does not guarantee results from the use of the information provided herein. Stego does offer a limited warranty on StegoTack Tape. Please see stegoindustries.com/legal

8. MAINTENANCE AND STORAGE

Maintenance: Check post-application. Replace or overlay areas that show wear.

Storage and Handling: Store in original packaging in cool, dry conditions. Ensure surfaces for application are clean for best adhesion.

Please refer to the Safety Data Sheet (SDS) for detailed safety, storage, and handling procedures.

9. TECHNICAL SERVICES

Technical advice, custom CAD drawings, and additional information can be obtained by contacting Stego or by visiting the website.

Email: contact@stegoindustries.com

Contact Number: (877) 464-7834

Website: stegoindustries.com

10. FILING SYSTEMS: stegoindustries.com





STEGO® TERM BAR

A STEGO INDUSTRIES, LLC INNOVATION | VAPOR RETARDERS 07 26 00, 03 30 00 | VERSION: JAN 28, 2025

1. PRODUCT NAME

STEGO TERM BAR

2. MANUFACTURER

Stego Industries, LLC
216 Avenida Fabricante, Suite 101
San Clemente, CA 92672
Sales, Technical Assistance
Ph: (877) 464-7834
contact@stegoindustries.com
stegoindustries.com



3. PRODUCT DESCRIPTION

USES: Stego Term Bar is a semi-flexible plastic termination bar used for mechanically securing Stego® Wrap or other materials to concrete, masonry, or wood.

COMPOSITION: Stego Term Bar is made from post-industrial recycled PVC.

SIZE: Stego Term Bar is 42" x 1.125".

4. TECHNICAL DATA

TABLE 4.1: PHYSICAL PROPERTIES OF STEGO TERM BAR

PROPERTY	RESULTS
Dimensions	42" x 1.125"
Color	Grey
Material	Recycled PVC
Weight	4 oz

5. INSTALLATION

UNDER SLAB: Nail through Stego Term Bar and Stego Wrap to secure material as needed. If the beveled edge is facing the wall, a pocket/lip is created for mastic/sealant to be used if required. Pre-drilled nail holes are provided every 6 inches for ease of installation.

To cut Stego Term Bar, score with a utility knife or wire snips. Stego Term Bar can be bent back and forth and then broken at desired locations as well.

Stego Term Bar is flexible enough to bend around corners and contours in the wall for easy installation.

Stego Term Bar will become less flexible at lower temperatures. Do not exceed 7 days between Stego Term Bar installation and concrete placement or full protection from UV and weather exposure. Please review technical data sheets for Stego accessory products for installation/application temperature ranges.

For additional information, please refer to Stego's complete installation instructions.

STEGO® TERM BAR

A STEGO INDUSTRIES, LLC INNOVATION | VAPOR RETARDERS 07 26 00, 03 30 00 | VERSION: JAN 28, 2025

6. AVAILABILITY & COST

Stego Term Bar is available through our network of building supply distributors. For current cost information, contact your local Stego® distributor or Stego Sales Representative.

7. WARRANTY

Stego believes to the best of its knowledge, that specifications and recommendations herein are accurate and reliable. However, since site conditions are not within its control, Stego does not guarantee results from the use of the information provided herein. Stego does offer a limited warranty on Stego Term Bar. Please see stegoindustries.com/legal

8. MAINTENANCE AND STORAGE

Maintenance: None required.

Storage and Handling: Store above 60°F.

Please refer to the Safety Data Sheet (SDS) for detailed safety, storage, and handling procedures.

9. TECHNICAL SERVICES

Technical advice, custom CAD drawings, and additional information can be obtained by contacting Stego or by visiting the website.

Email: contact@stegoindustries.com

Contact Number: (877) 464-7834

Website: stegoindustries.com

10. FILING SYSTEMS: stegoindustries.com





STEGO® PRE-CUT PIPE BOOTS

A STEGO INDUSTRIES, LLC INNOVATION | VAPOR RETARDERS 07 26 00, 03 30 00 | VERSION: JAN 28, 2025

1. PRODUCT NAME

STEGO PRE-CUT PIPE BOOTS

2. MANUFACTURER

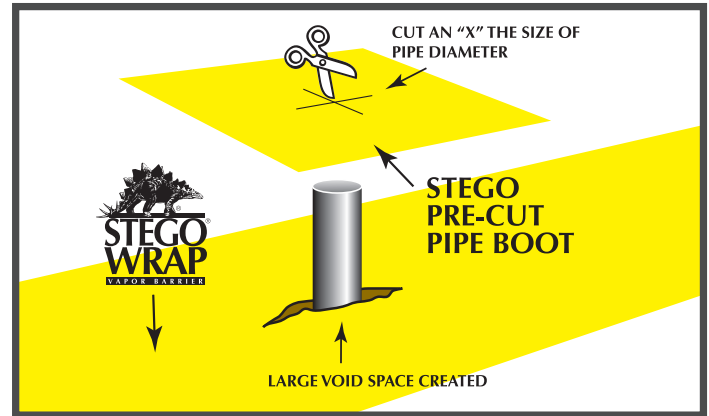
Stego Industries, LLC
216 Avenida Fabricante, Suite 101
San Clemente, CA 92672
Sales, Technical Assistance
Ph: (877) 464-7834
contact@stegoindustries.com
stegoindustries.com

3. PRODUCT DESCRIPTION

USES: Stego Pre-Cut Pipe Boots are used to seal around permanent penetrations in Stego® Wrap.

COMPOSITION: Stego Pre-Cut Pipe Boots are made from Stego Wrap Vapor Barrier (15-mil), and therefore are manufactured from only high grade prime, virgin, polyolefin resins.

SIZE: Stego Pre-Cut Pipe Boots are 18" x 18" and 15 mil thick. Stego Pre-Cut Pipe Boots ship 10 packs of 25 in a case (250 boots per case).



4. TECHNICAL DATA

TABLE 1: PHYSICAL PROPERTIES OF STEGO PRE-CUT PIPE BOOTS

PROPERTY	TEST	RESULTS
Under Slab Vapor Retarders	ASTM E1745 Class A, B & C– Standard Specification for Water Vapor Retarders Used in Contact with Soil or Granular Fill under Concrete Slabs	Exceeds Class A, B & C
Water Vapor Permeance	ASTM F1249 – Test Method for Water Vapor Transmission Rate Through Plastic Film and Sheeting Using a Modulated Infrared Sensor	0.0086 perms
Permeance After Conditioning (ASTM E1745 Sections 7.1.2 - 7.1.5)	ASTM E154 Section 8, F1249 – Permeance after wetting, drying, and soaking ASTM E154 Section 11, F1249 – Permeance after heat conditioning ASTM E154 Section 12, F1249 – Permeance after low temperature conditioning ASTM E154 Section 13, F1249 – Permeance after soil organism exposure	0.0098 perms 0.0091 perms 0.0097 perms 0.0095 perms
Puncture Resistance	ASTM D1709 – Test Method for Impact Resistance of Plastic Film by Free-Falling Dart Method	2,266 grams
Tensile Strength	ASTM D882 – Test Method for Tensile Properties of Thin Plastic Sheeting	70.6 lbf/in
Thickness		15 mil
Pipe Boot Dimensions	width x length:	18" x 18"

Note: perm unit = grains/(ft²*hr*in-Hg)

5. INSTALLATION

UNDER SLAB: Cut an "X" the size of the pipe diameter in the center of the Pre-Cut Pipe Boot and slide tightly over pipe. Tape all sides of the pipe boot with Stego® Tape. Seal around the base of the pipe using Stego Tape and/or Stego® Mastic.

Stego Wrap should be installed below 110°F. Do not exceed 7 days between Stego Wrap installation and concrete placement or full protection from UV and weather exposure. Please review technical data sheets for Stego accessory products for installation/application temperature ranges.

For additional information, please refer to Stego's complete installation instructions.

Continued...

Note – legal notice on page 2.

STEGO® PRE-CUT PIPE BOOTS

A STEGO INDUSTRIES, LLC INNOVATION | VAPOR RETARDERS 07 26 00, 03 30 00 | VERSION: JAN 28, 2025

6. AVAILABILITY & COST

Stego Pre-Cut Pipe Boots are available through our network of building supply distributors. For current cost information, contact your local Stego® distributor or Stego Sales Representative.

7. WARRANTY

Stego believes to the best of its knowledge, that specifications and recommendations herein are accurate and reliable. However, since site conditions are not within its control, Stego does not guarantee results from the use of the information provided herein. Stego does offer a limited warranty on Stego Pre-Cut Pipe Boots. Please see stegoindustries.com/legal

8. MAINTENANCE AND STORAGE

Maintenance: None required.

Storage and Handling: Store in original packaging in a cool, dry place. Handle with care to avoid damage.

Please refer to the Safety Data Sheet (SDS) for detailed safety, storage, and handling procedures.

9. TECHNICAL SERVICES

Technical advice, custom CAD drawings, and additional information can be obtained by contacting Stego or by visiting the website.

Email: contact@stegoindustries.com

Contact Number: (877) 464-7834

Website: stegoindustries.com

10. FILING SYSTEMS: stegoindustries.com





STEGO® WRAP

VAPOR BARRIER AND RETARDER INSTALLATION INSTRUCTIONS



ENGINEERED PERFORMANCE
LIFE OF THE BUILDING™ PROTECTION



Additional Stego Wrap installation resources and videos are available on our website at:

stegoindustries.com/resources

CONTENTS

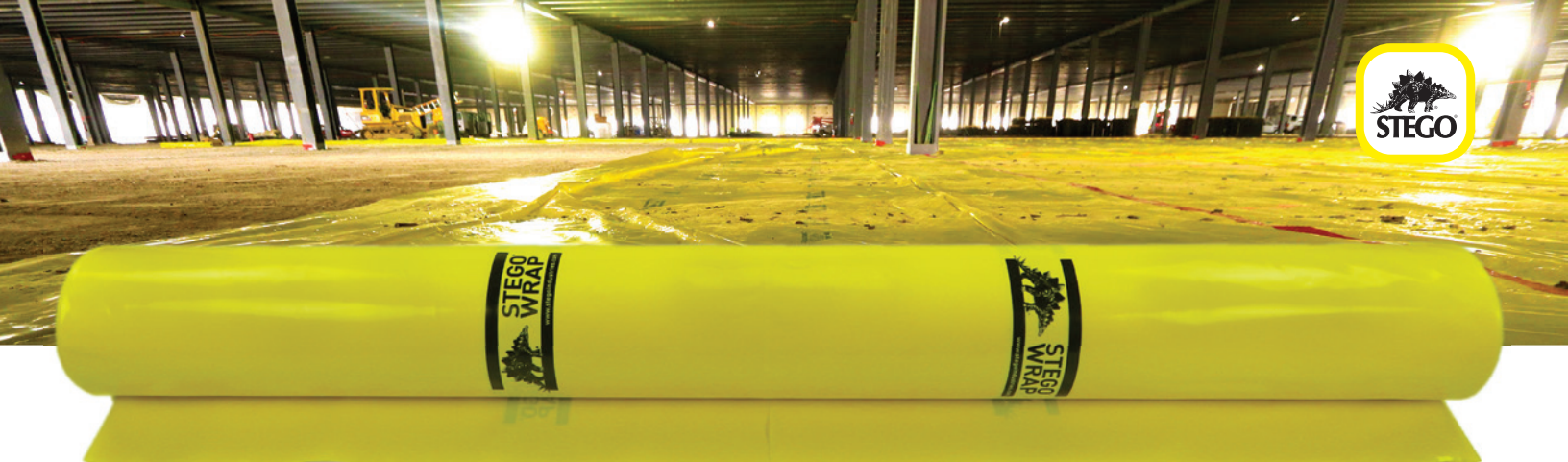
The installation recommendations set forth in these instructions are based on ASTM E1643 and specific applications of Stego products. Each section provides explanations and options for the varying conditions.

SECTION 1	Stego Wrap and Stego Accessories	3
SECTION 2	Creating a Monolithic Membrane	4
SECTION 3	Where to Terminate the Stego Wrap	5
SECTION 4	Sealing Stego Wrap at Terminating Edges	6
	On Vertical Planes	
	Using Stego Crete Claw Tape.....	7
	Up Foundation Walls and Vertical Surfaces	
	Using StegoTack Tape or Stego Mastic.....	8
	On a Horizontal Plane	
	Using Stego Crete Claw Tape or Stego Mastic	9
SECTION 5	Sealing Damaged Areas	10
SECTION 6	Sealing Single Pipe Penetrations	11
SECTION 7	Sealing Multiple Pipe Penetrations	12
SECTION 8	Avoid Punctures with Beast Concrete Accessories	13



Stego Installation Support - A Free Service

When you choose **Stego® Barrier Solutions** and products, you gain access to a large nationwide network of full-time technical sales representatives providing unmatched local support and service. If you ever have a question or concern regarding the following installation scenarios please contact us and take advantage of our free Stego Installation Support.



Stego Wrap

Stego Wrap is made from a proprietary blend of prime virgin resins and additives, a combination lending to great value and effectiveness in protecting the concrete slab from moisture intrusion. All rolls of Stego Wrap are continuously printed with the Stego logo. This ensures no copycat or counterfeit products show up on a job site that could expose you to liability if an incorrectly identified product fails.

- **Stego® Wrap 20-Mil Vapor Barrier (Class A)**
- **Stego® Wrap 15-Mil Vapor Barrier (Class A)**
- **Stego® Wrap 10-Mil Vapor Retarder (Class A)**

Stego Accessories

At Stego, we know every project has its own unique challenges. To make a Stego Wrap installation easy and flexible, we offer an extensive line of accessory items that give you options to accomplish an effective perimeter seal that meets ASTM E1643. **Consult the project architect, owner's representative, and structural engineer of record before proceeding with any of these options.**



Stego® Tape

This low permeance and pressure-sensitive tape is engineered to bond specifically to Stego Wrap, making it ideal for sealing Stego Wrap seams and penetrations.



Stego® Mastic

A liquid vapor retardant membrane, designed to be used with Stego Wrap, for sealing utility and pipe penetrations.



Stego® Crete Claw® Tape 3"

This multi-layered tape utilizes a textured film that mechanically bonds to concrete cast against it. It is used to create a seal at Stego Wrap's terminating edges to subsequently placed slabs.



Stego® Term Bar

A semi-flexible plastic termination bar, optimal for mechanically securing Stego Wrap to concrete, wood, or masonry.



StegoTack® Tape

A double-sided adhesive strip used to bond and seal Stego Wrap to concrete, masonry, metal, and other surfaces.

Creating a Monolithic Membrane

The key to an effective Stego Wrap installation is to create a monolithic layer of protection between the concrete slab and moisture sources below. This can be accomplished by following the installation instructions outlined in ASTM E1643 - *Standard Practice for Selection, Design, Installation, and Inspection of Water Vapor Retarders Used in Contact with Earth or Granular Fill Under Concrete Slabs*.

ASTM E1643 discusses the selection of the vapor retarder and preparation of the subbase to minimize potential damage during installation and concrete placement.

ASTM E1643, Section 5.3.4.1 - *Select a vapor retarder material capable of withstanding potential construction site damage.*

ASTM E1643, Section 5.3.5.1 - *Select vapor retarder material capable of withstanding tear or puncture damage due to the type, gradation, and texture of the base material to be installed below the material. Prepare base material to minimize risk of puncture, for example, by rolling or compacting.*

ASTM E1643, Section 6.1 - *Level and compact base material.*

ASTM E1643 then states to create a monolithic membrane to protect the slab from adjacent moisture sources.

ASTM E1643, Section 6.4 - *... create a monolithic membrane between the surface of the slab and moisture sources below the slab as well as at the slab perimeter.*

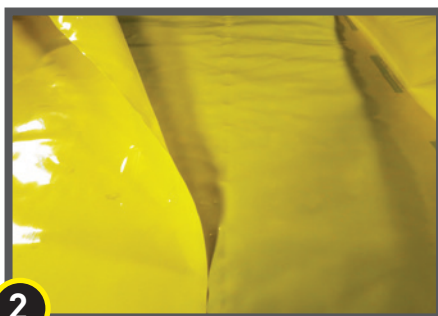
ASTM E1643, Section 6.5 - *Lap joints minimum 6 in. (150 mm), or as instructed by the manufacturer, and seal laps in accordance with the manufacturer's recommendations.*

Stego Wrap can be installed over an aggregate, sand, or tamped earth base. It is not necessary to have a cushion layer or sand base, as Stego Wrap is tough enough to withstand rugged construction environments.



1

Unroll Stego Wrap over the area where the slab is to be placed.



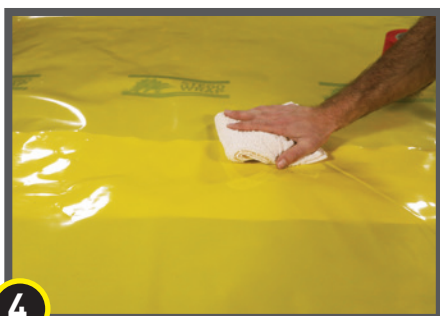
2

Unless otherwise indicated by the design professional(s) of record, unfold Stego Wrap to completely cover the placement area.



3

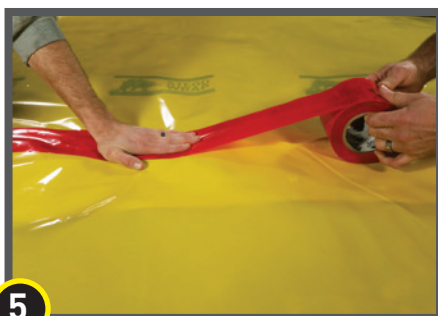
All joints/seams should be overlapped a minimum of 6 inches.



4

Ensure Stego Wrap is clean and dry when applying Stego Tape.

Tip: Use a cloth or other means to remove dust, debris, and excess moisture from Stego Wrap prior to applying Stego Tape.



5

Seal the seams with Stego Tape.

Where to Terminate the Stego Wrap

Always consult the project design team for where to terminate the vapor barrier to strike the balance between the location of the vapor barrier on or around foundation constructions and any structural concerns before proceeding.

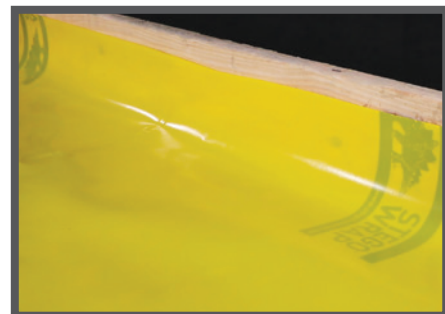
ASTM E1643 provides direction on where to terminate the vapor barrier as follows:

ASTM E1643, Section 6.4 - *Extend vapor retarder over footings and seal to foundation wall, grade beam, or slab at an elevation consistent with the top of the slab or terminate at impediments such as waterstops or dowels...*

ASTM E1643, Section 6.6 - *Extend vapor retarder over the tops of pile caps and grade beams to a distance acceptable to the structural engineer.*

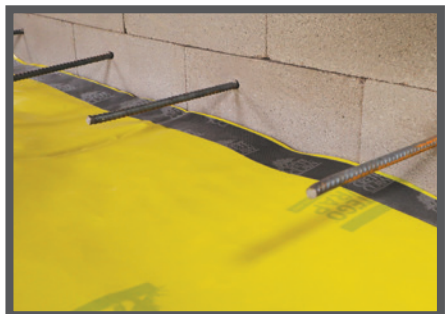
In accordance with ASTM E1643, terminate the Stego Wrap as follows:

At an elevation (height) consistent with the top of the slab;



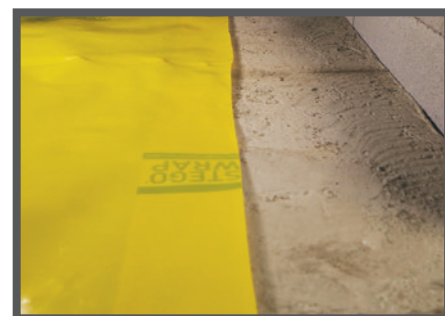
Note: Turn Stego Wrap up foundation walls or forms.

At Impediments; OR



Note: Impediments may include rebar, dowels, water stops, etc.

At a location of termination designated by the project design team.



Note: The distance to which the vapor barrier is extended adjacent to, onto, or completely over a footing or grade beam should be determined by the project design team.

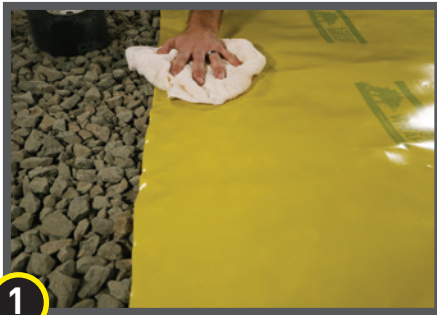
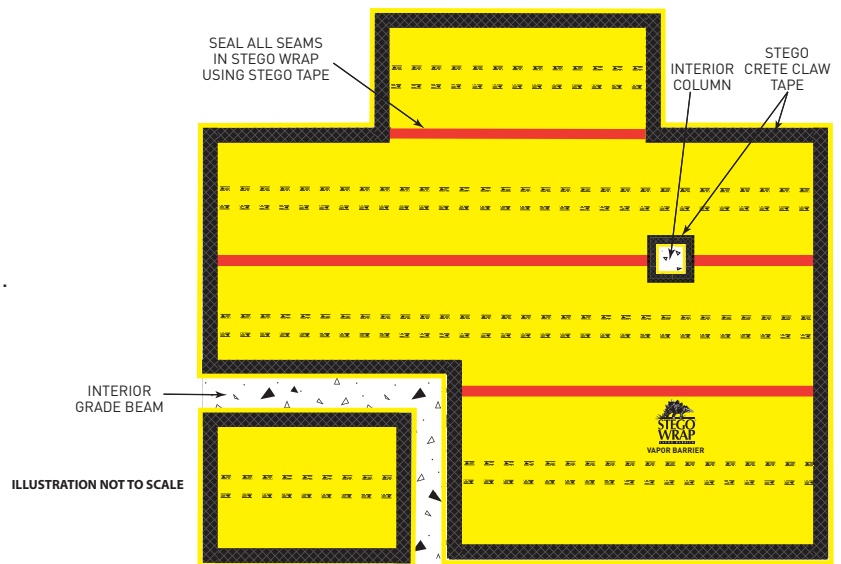
If the location of vapor barrier termination has not been clearly addressed in the construction documents, then clarification should be requested from the project design team. Should no direction be given, Stego recommends the project team follow the guidelines of ASTM E1643.

Regardless of where the vapor barrier is determined to be terminated, ASTM E1643 requires the terminating edges to be sealed. See Sealing Stego Wrap at Terminating Edges, next page.

Sealing Stego Wrap at Terminating Edges

Always consult the project design team for where to terminate the vapor barrier to strike the balance between the location of the vapor barrier on or around foundation constructions and any structural concerns before proceeding.

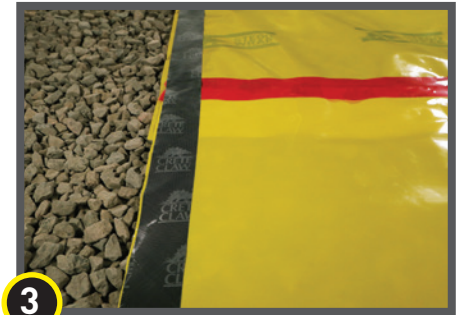
Seal Stego Wrap along all terminating edges as indicated by the project team. Stego provides several innovative options for creating a seal as required by ASTM E1643.



Ensure Stego Wrap is clean and dry when applying Stego Crete Claw Tape.
Tip: Use a cloth or other means to remove dust, debris, and excess moisture from the vapor barrier prior to applying Stego Crete Claw Tape.



Apply Stego Crete Claw Tape as close as possible to the terminating edge of Stego Wrap.
Tip: Applying Stego Crete Claw Tape within 2" of the terminating edge is almost always possible, even when the terminating edges are not cut perfectly straight.



Install Stego Crete Claw Tape last for a successful installation.
Tip: Install Stego Crete Claw Tape before rebar but after Stego Wrap has been overlapped and sealed at the seams with Stego Tape, sealed at penetrations, and terminated at the project's perimeter and/or other specified terminating location.

Stego Crete Claw Tape - Installation Tips



IMPORTANT:
Do not overlap Stego Crete Claw Tape over itself.
Tip: If placing multiple sections of Stego Crete Claw Tape, minimize gaps by abutting each adjacent section against one another.



Do not leave any open gaps between Stego Crete Claw Tape.
Tip: If a small gap exists between two pieces of Stego Crete Claw Tape, a supplementary piece of Stego Crete Claw Tape should be applied to run along the inside edges of the two original pieces and span the gap between them. The supplementary piece should run parallel and flush to the original pieces without overlap.



If protrusions or penetrations are determined to be impediments to applying Stego Crete Claw Tape along the perimeter terminating edges of Stego Wrap, route Stego Crete Claw Tape around the impediment, as close to the impediment as possible, and continue along the terminating edge of Stego Wrap on the opposite side of the impediment.

Stego Crete Claw Tape is often the preferred product because of its ease of application and versatility to accommodate most conditions. It has been engineered to create a seal between Stego Wrap and the concrete subsequently cast against it. See also StegoTack Tape and Stego Mastic options, detailed on the next few pages.

Sealing the Terminating Edges of Stego Wrap on Vertical Planes Using Stego Crete Claw Tape

IMPORTANT: Make sure the area of adhesion is free of dust, dirt, debris, moisture, and frost to allow maximum adhesion.

Vertical Plane: Foundation Wall



1 Extend Stego Wrap up the vertical surface, likely to the height of the slab.
Note: See Where to Terminate the Stego Wrap, page 4.



Optional: Temporarily secure Stego Wrap to the foundation wall with a small piece of Stego Tape.
Note: Trim excess Stego Tape after concrete has been placed and before removal of any adjacent forms.



3 Apply the entire 3" width of Stego Crete Claw Tape on the perimeter edge of Stego Wrap.
Note: Clean surface of Stego Wrap to ensure that it is free of moisture and debris prior to the installation of Stego Crete Claw Tape.

Vertical Plane: Concrete Form



1 Extend Stego Wrap up the vertical surface, likely to the height of the forms.
Note: See Where to Terminate the Stego Wrap page 4.



Optional: Temporarily secure Stego Wrap to the concrete form with a small piece of Stego Tape.
Note: Trim excess Stego Tape after concrete has been placed and before removal of any adjacent forms.



3 Apply the entire 3" width of Stego Crete Claw Tape on the perimeter edge of Stego Wrap.
Note: Clean surface of Stego Wrap to ensure that it is free of moisture and debris prior to the installation of Stego Crete Claw Tape.

Sealing Stego Wrap Up Foundation Walls and Vertical Surfaces Using StegoTack Tape

StegoTack Tape can also be used to seal Stego Wrap to foundation walls, grade beams or other adjacent concrete constructions.

IMPORTANT: Make sure area of adhesion is free of dust, dirt, debris, moisture, and frost to allow maximum adhesion.



1 Remove the release liner on one side of StegoTack Tape and stick to foundation wall at the height of the slab or at impediments.



2 When ready to apply Stego Wrap, remove the exposed release liner from StegoTack Tape.



3 Press Stego Wrap firmly against StegoTack Tape to secure.

NOTE: If consistent, continuous pressure will not be applied (e.g. by a concrete slab), Stego Term Bar may be necessary.

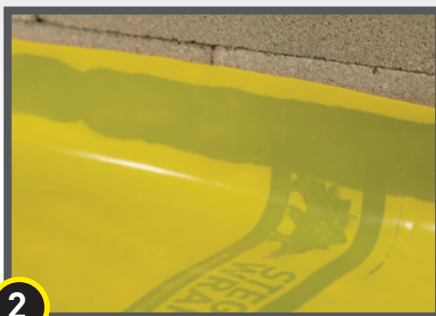
Sealing Stego Wrap Up Foundation Walls and Vertical Surfaces Using Stego Mastic

Stego Mastic can also be used to seal Stego Wrap to foundation walls, grade beams or other adjacent concrete constructions.

IMPORTANT: Make sure area of adhesion is free of dust, dirt, debris, moisture, and frost to allow maximum adhesion.



1 Apply Stego Mastic to the foundation wall at the anticipated edge of the subsequently applied Stego Wrap at the height of the slab or impediments.



2 Press Stego Wrap firmly against the applied Stego Mastic on the foundation wall.



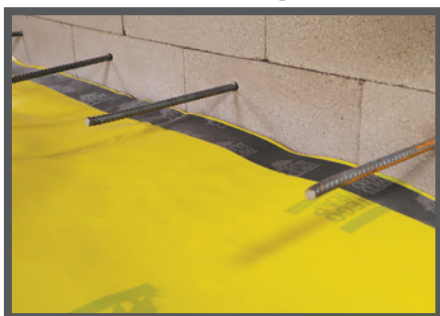
3 If consistent, continuous pressure will not be applied (e.g. by a concrete slab), Stego Term Bar may be necessary.

Sealing the Terminating Edges of Stego Wrap on a Horizontal Plane

Always consult the project design team for where to terminate the vapor barrier to strike the balance between the location of the vapor barrier on or around foundation constructions and any structural concerns before proceeding.

After the location of where to terminate the vapor barrier has been determined, seal Stego Wrap along all terminating edges as indicated by the project team.

With Stego Crete Claw Tape

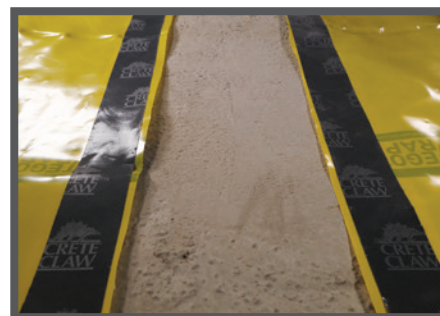


At a Foundation Wall: Install Stego Crete Claw onto the terminating edge of Stego Wrap.

Tip: Install Stego Crete Claw onto Stego Wrap before sliding Stego Wrap into final termination location.



At Interior Grade Beam Impediments: Install Stego Crete Claw onto the terminating edge of Stego Wrap.



At a Location Designated by the Design Team: Install Stego Crete Claw onto the terminating edge of Stego Wrap.

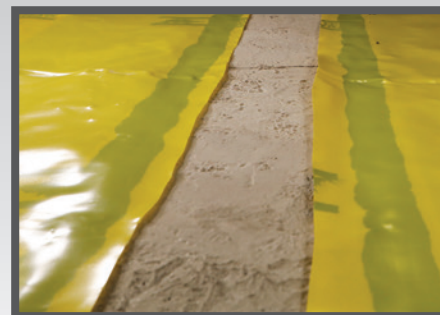
With Stego Mastic



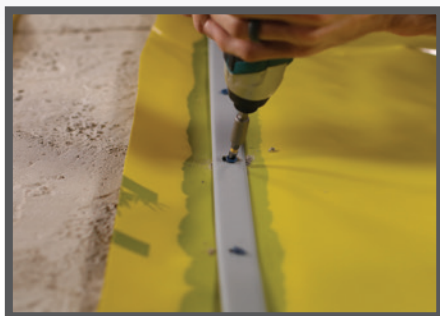
Onto a Perimeter Footing at Impediments: Seal Stego Wrap to concrete with Stego Mastic.



Onto Interior Grade Beams at Impediments: Seal Stego Wrap to concrete with Stego Mastic.



At a Location Designated by the Design Team: Seal Stego Wrap to concrete with Stego Mastic.



If consistent, continuous pressure will not be applied (e.g. by a concrete slab), Stego Term Bar may be necessary.

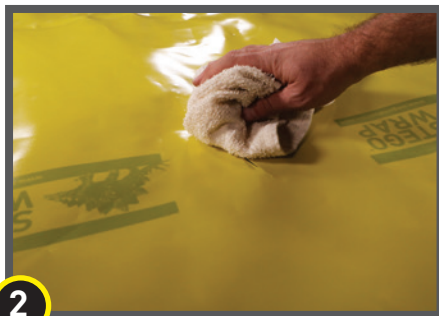
See “Where to Terminate the Vapor Barrier” on page 4 prior to choosing your terminating edge sealing accessory.

Sealing Damaged Areas: Small Hole or Slice

In the event that Stego Wrap is damaged during or after installation, repairs must be made. For smaller holes or slices in Stego Wrap, Stego Tape can be used as noted below.



Small hole or slice in Stego Wrap.



Clean area of adhesion.



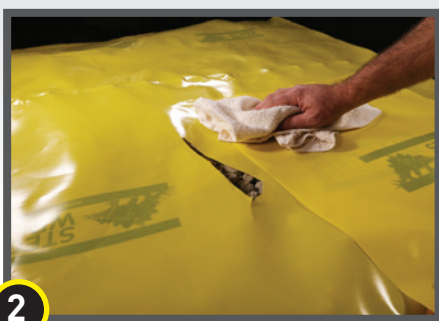
Center Stego Tape over small hole or slice in Stego Wrap.

Sealing Damaged Areas: Larger Hole

In the event that Stego Wrap is damaged during or after installation, repairs must be made. For larger holes, cut a piece of Stego Wrap to a size and shape that covers any damage by a minimum overlap of 6" in all directions. Clean all adhesion areas of dust, dirt, moisture, and frost. Tape down all edges using Stego Tape.



Occasionally there are larger holes in the vapor barrier that require a patch.



Clean area of adhesion.



Measure and cut a piece of Stego Wrap to cover damaged area 6" in all directions. Seal patch with Stego Tape.

Sealing Single Pipe Penetration: Minimal Void Space

All penetrations must be sealed. All pipe, ducting, rebar, wire penetrations and block outs should be sealed using Stego Wrap, Stego Tape and/or Stego Mastic. If penetrations are encased in other materials, such as expansive materials like foam, unless otherwise specified, Stego Wrap should be sealed to the underlying penetration directly.



1 Install Stego Wrap around pipe penetrations by slitting/cutting material as needed. Try to minimize the void space created.



2 Pull material over and flatten. Clean area of adhesion where Stego Tape will be applied.



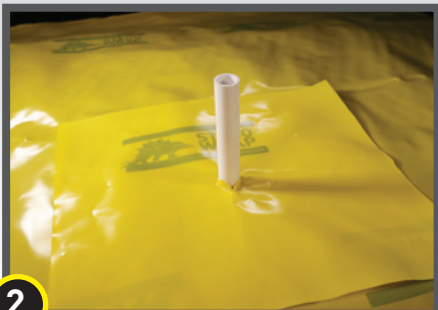
3 If Stego Wrap is close to pipe and void space is minimized then seal around pipe penetration with Stego Tape and/or Stego Mastic.

Sealing Single Pipe Penetration: Larger Void Space Requires Detail Patch

To minimize void space around a larger penetration, a detail patch may be required. Stego Pre-Cut Pipe Boots are also available to speed up the installation.



1 Cut a detail patch to a size and shape that creates a 6" overlap on all edges around the void space at the base of the pipe.



2 Cut an "X" the size of the pipe diameter in the center of the pipe boot and slide tightly over pipe.



3 Seal all sides of the pipe boot with Stego Tape.



4a Seal around the base of the pipe using Stego Tape. OR...



4b Seal around the base of the pipe with Stego Mastic.
Note: apply using disposable glove, paint brush, or similar.

Sealing Multiple Pipe Penetrations: Using Stego Tape

Multiple pipe penetrations in close proximity and very small pipes may be sealed using Stego Tape and/or Stego Mastic for ease of installation.



1 Cut a slit the size to accommodate the width of the multiple pipes. Try to minimize the void space created.



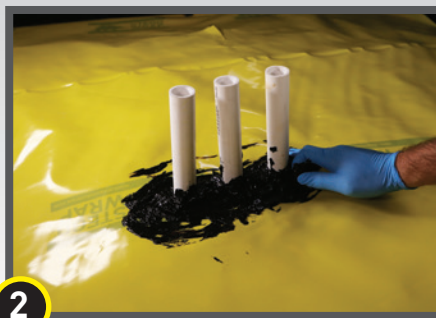
2 Seal any void space around each pipe using Stego Tape.

Note: Subbase should not be visible from above.

Sealing Multiple Pipe Penetrations: Using Stego Mastic



1 Seal any void space around each pipe penetration with Stego Mastic.



2 Dab Stego Mastic with disposable glove, paint brush, or similar, making sure entire void space is sealed.

Note: If pipe penetrations are abutted against one another, minimize any void space first with Stego Wrap, then seal any remaining void space with Stego Tape and/or Mastic in the same manner represented above.



Avoid Punctures with Beast® Concrete Accessories

To help eliminate the use of non-permanent penetrations in Stego Wrap installation, Stego recommends the use of Beast vapor barrier-safe concrete accessories.

IMPORTANT: Avoid puncturing Stego Wrap with stakes while forming, bracing, and screeding.

Preventing punctures in the vapor barrier.



BEAST® FORM STAKE can be used with **BEAST® FOOT** as part of the Stego vapor barrier-safe forming system which meets ASTM E1643 requirements.



This concrete form stake takes the place of traditional nail stakes for interior forming applications, utilizing SpeedTrack™ Fastening Grooves for unlimited fastener placement.

Note: Refer to Beast Form Stake Installation Guide for detailed usage instructions.



Beast Form Stake is strong enough to withstand a beating during concrete placement while holding its shape. It is easy to remove and reusable for the next job.

Note: Beast Form Stake can be removed once concrete has set sufficiently to hold its shape. Fill and repair any voids in the concrete as necessary once the Beast Form Stake has been removed and strike Beast Form Stake against a hard surface to loosen the concrete buildup.



Locate it and lock it down!

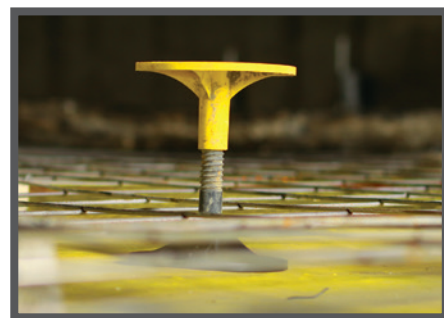
BEAST® HOOK is a **faster, easier** way to set 2x4 overhead screeds. Use Beast Foot and Beast Form Stake and make it a vapor barrier-safe screed system.

No tools are required, just grip the knob to loosen or tighten. Fast, easy, efficient.



BEAST® SCREED is a fixed-elevation, point-to-point guide screed system designed to replace common wet-screed methods.

Improve efficiency and maintain concrete floor levelness with the BEAST SCREED SYSTEM!



Set it and forget it. Beast Screed eliminates the need to frequently re-establish grade to ensure floor elevation has not changed during the screeding operation as is typical with traditional wet-screed methods.

Note: Refer to Beast Screed System Installation Instructions for detailed usage instructions.

NOTE: Stego Industries, LLC's ("Stego") installation instructions are based on ASTM E1643 - *Standard Practice for Selection, Design, Installation, and Inspection of Water Vapor Retarders Used in Contact with Earth or Granular Fill Under Concrete Slabs*. These instructions are meant to be used as a guide, and do not take into account specific job site situations. Consult local building codes and regulations along with the building owner or owner's representative before proceeding. If you have any questions regarding the above mentioned installation instructions or Stego products, please call us at 877-464-7834 for technical assistance. While Stego employees and representatives may provide technical assistance regarding the utility of a specific installation practice or Stego product, they are not authorized to make final design decisions.

HAVE QUESTIONS? Give us a call to get in touch with your nearest Stego® Representative.
877-464-7834 | stegoindustries.com

INDUSTRY-LEADING BARRIERS AND UNRIVALED SUPPORT™

Stego Industries, LLC ("Stego") Intellectual Property, Installation, Warranty, and State Approval Information: stegoindustries.com/legal.
©2025 Stego Industries, LLC. All rights reserved.

