

# SX-1000U

## Setup Guide

English



**silex**  
technology

### Thank you for purchasing the SX-1000U(this product).

This setup guide, "SX-1000U Setup Guide", provides information on how to configure and use this product in a network environment. Please follow step1-3 to configure this product.

Before setup, please read carefully the "Safety instructions" in the online manual included in the CD-ROM to properly configure this product.

(De) Auf der CD-ROM befindet sich ein deutschsprachiges Setup-Handbuch im PDF-Format.Zum Anzeigen der PDF-Datei unter Windows benötigen Sie den Acrobat Reader.

(Fr) Un guide d'installation en français au format PDF est inclus dans le CD-ROM.Acrobat Reader est nécessaire pour lire les fichiers PDF dans un environnement Windows.

(It) Una Guida alla configurazione in italiano è inclusa nel CD-ROM come file PDF.Per visualizzare il file PDF in ambiente Windows è necessario Acrobat Reader.

(Es) En el CD-ROM se incluye una Guía de instalación en español como archivo PDF.Se necesita Acrobat Reader para ver el archivo PDF en un entorno Windows.

(Pt) Um Guia de Configuração em português é fornecido no CD-ROM no formato de arquivo PDF.É necessário ter o Acrobat Reader para visualizar o arquivo PDF em um ambiente Windows.

### ●Contents

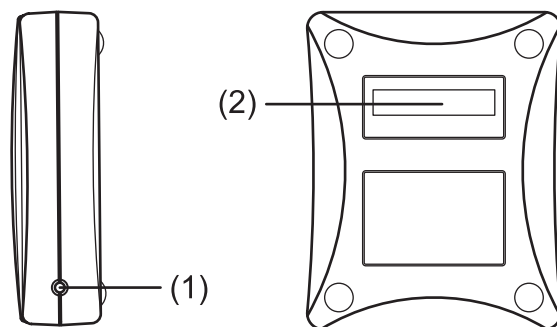
- SX-1000U
- Power Supply
- Device Server Setup CD
- Setup Guide (this document)
- SX Virtual Link User's Guide
- Warranty Booklet

### ●For User Registration

Make sure to fill out the User Registration via our web page after completing setup. User Registration is recommended in order to provide you better product support and service.

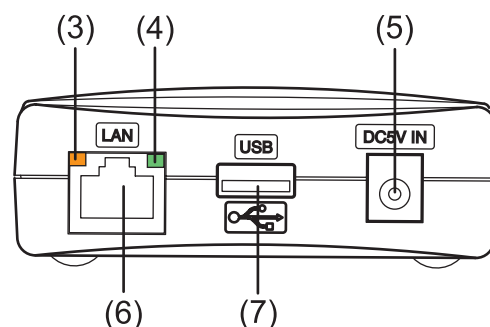
<http://www.silex.jp/register/>

### Name of Parts



(1) Push Switch

(2) Ethernet Address



(3) STATUS LED (Orange)

(4) LINK LED (Green)

(5) AC Connector

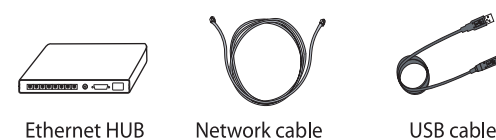
(6) Network Port

(7) USB Port

## Step1 : Install this product and a USB device

Step1 explains how to connect this product to a USB Device and the Network.

1.Please prepare the following before setup: Ethernet HUB, Network cable, USB cable.



\* If this product has been used in another network, reset it to factory default prior to setup (see below).

2.Connect the network cable from an Ethernet HUB to this product (1).

3.Use a USB cable to connect this product to a USB device (2).

\* USB devices using isochronous transmission, such as a web camera or a speaker device, are not supported.

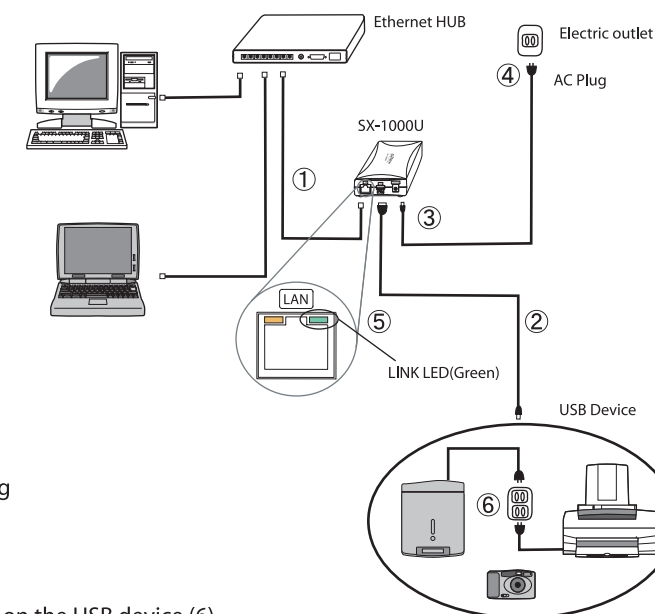
\* If a USB HUB is connected to this product, two or more USB devices can be connected.

\* Some USB devices may not be supported depending on the USB device driver specification. Please refer to our web site for the latest compatibility information.

4.Connect the power supply to this product (3), and then insert the AC Plug into the electric outlet (4). Check that the LINK LED(Green) light is on (5).

\* Please do not use an AC adapter other than the one that came with this product.

5.If the USB device requires external power, connect the power supply. Turn on the USB device (6).

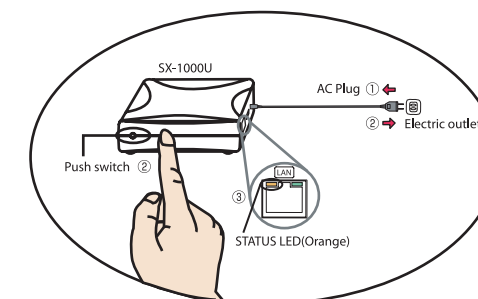


### To reset to the factory default settings

1.Remove the AC plug from the electric outlet.

2.Push and hold the push switch while re-inserting the AC plug into the electric outlet. Continue holding.

3.The STATUS LED(Orange) will light when the factory default configuration settings have been restored. Release the push switch.



## Step2 : Before setup ...

By default, this product automatically obtains an IP address from the network device that has the DHCP server function.

There is no need to configure this product when obtaining the IP address automatically. Please install the application (refer to "SX Virtual Link User's Guide").

Please proceed to step3 when setting the IP address manually or when you are not sure if the IP address can automatically be obtained.

\* Before proceeding to step3, please temporarily disable the firewall function of the PC to be used for the configuration. Some of the procedure to disable the firewall is provided in FAQ on our homepage.

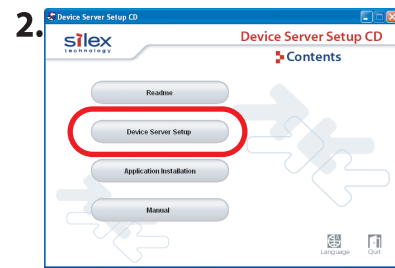
- Standard Windows XP firewall
- Commercial security software's firewall function

## Step3 : Configure the IP Address

Step3 explains how to configure the IP address using the configuration utility in the Device Server Setup CD. Configuration can be done on either a Windows or Macintosh environment.

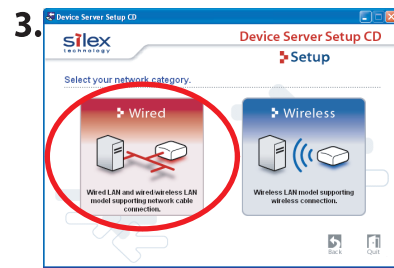
<<< Windows environment >>>

1. Please insert the Device Server Setup CD into your PC.



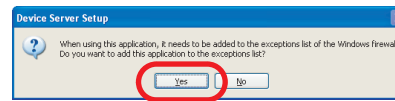
Please select **Device Server Setup** from the menu.

\* If the screen does not appear automatically, open My Computer, select the CD-ROM drive and execute Autorun.exe.

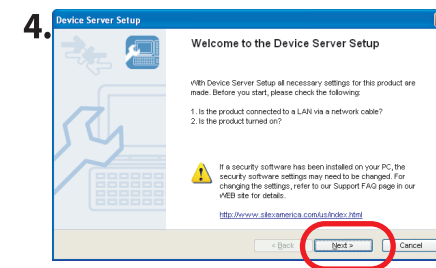


Please select **Wired**.

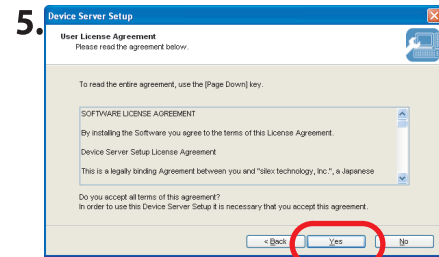
\* When in a Windows XP environment (SP2 or higher), the following message will be displayed. Select **Yes**.



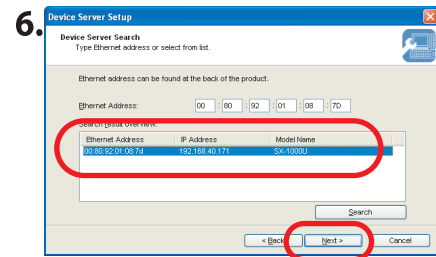
\* The User Account Control screen is displayed when configuration is performed on Windows Vista. Select **Continue**.



Click **Next**.

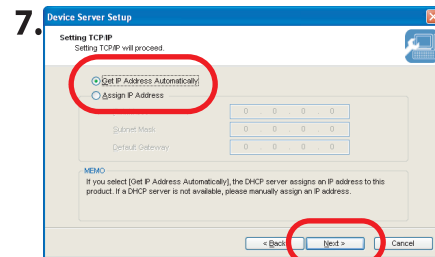


Read the agreement below and click **Yes**.



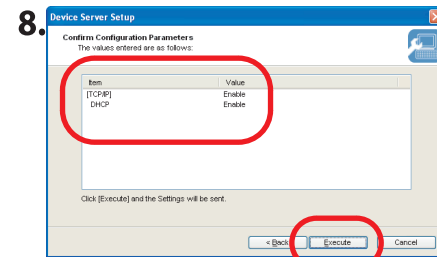
Select your product from the list and click **Next**.

\* It may take a while to display this product in the list. Please click Search when this product is not displayed in the list.



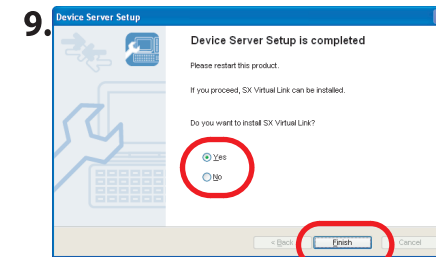
Click **Get IP Address Automatically** and then click **Next**.

\* When **Get IP Address Automatically** is selected, IP address is automatically obtained. When the window without the selection of **Get IP Address Automatically** is displayed, please enter the IP address (mandatory), subnet mask, and default gateway.



Please confirm the configuration parameters and click **Execute**.

\* Items displayed vary by configuration.



Click **Yes** and then click **Finish**.

\* Select **No** when not installing SX Virtual Link.  
**IP address of this product has been successfully configured.**

Then install USB device connection utility, SX Virtual Link. Please refer to the "SX Virtual Link User's Guide".

<<< Macintosh environment >>>

1. Please insert the Device Server Setup CD into your PC.

2. Double click the CD-ROM icon( ) and then double click **DSSetup**( ).



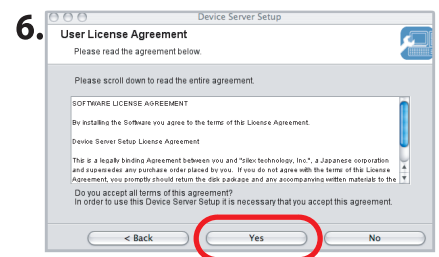
Please select **Device Server Setup** from the menu.



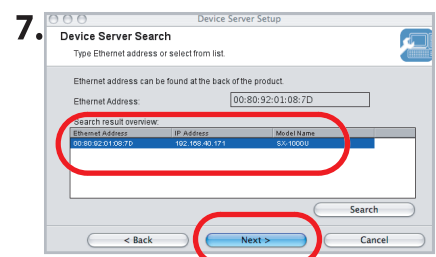
Please select **Wired**.



Click **Next**.

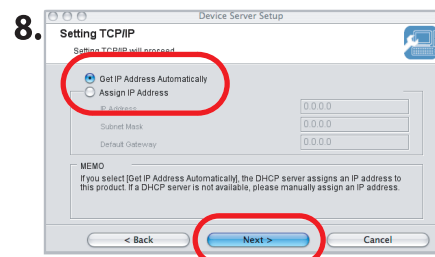


Read the agreement below and click **Yes**.



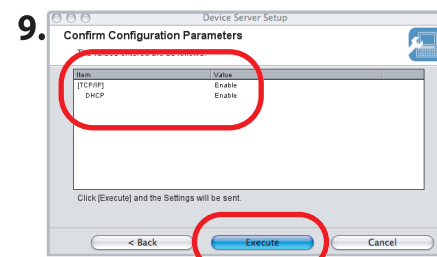
Select your product from the list and click **Next**.

\* It may take a while to display this product in the list. Please click Search when this product is not displayed in the list.



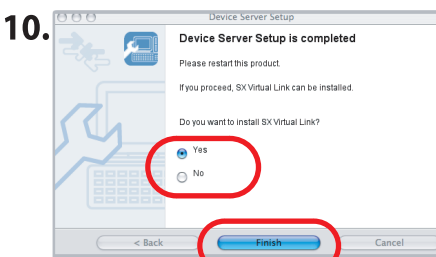
Click **Get IP Address Automatically** and then click **Next**.

\* When **Get IP Address Automatically** is selected, IP address is automatically obtained. When the window without the selection of **Get IP Address Automatically** is displayed, please enter the IP address (mandatory), subnet mask, and default gateway.



Please confirm the configuration parameters and click **Execute**.

\* Items displayed vary by configuration.



Click **Yes** and then click **Finish**.

\* Select **No** when not installing SX Virtual Link.

**IP address of this product has been successfully configured.**

Then install USB device connection utility, SX Virtual Link. Please refer to the "SX Virtual Link User's Guide".

### Refer to manual

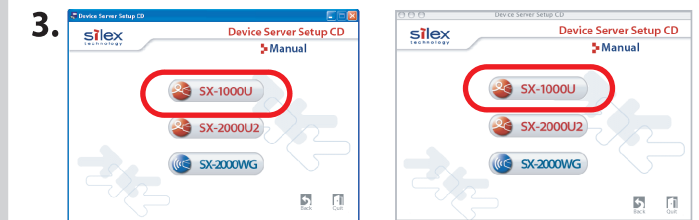
The CD-ROM contains the online manual of this product. Detailed information on the configuration, use of this product and Q&A for tips for trouble is described in the online manual. The following is the procedure on how to refer to the online manual.

1. Please insert the Device Server Setup CD into your PC. In a Macintosh environment, double click the CD-ROM icon( ) and then double click **DSSetup**( ).



Please select **Manual** from the menu.

\* If the screen does not appear automatically in the Windows environment, open My Computer, select the CD-ROM drive and execute Autorun.exe.



Please select **SX-1000U**.

4. Online manual will be displayed.

### Troubleshooting

Please refer to the following procedure if you have any problems regarding the setup.

**1 Refer to the Q&A in the online manual (see above).**

**2 Refer to the FAQ in our homepage.**

**3 Contact our customer support center.**

### Customer Support

**USA : silex technology america, Inc.**

E-mail : support@silexamerica.com  
URL : http://www.silexamerica.com/  
Phone : 1-866-765-8761

**Europe : silex technology europe GmbH**

E-mail : support@silexeurope.com  
URL : http://www.silexeurope.com/  
Phone : +49(0)21596750-0