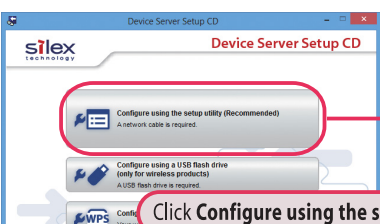


# Device Server Configuration (Windows)

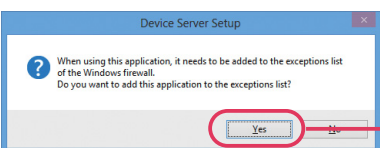
This document explains how to configure the IP address to the device server using the Device Server Setup. Follow the instructions below to configure the device server.


- 1 Double-click **Dssetup.exe** contained in the **Device Server Setup** you have downloaded.

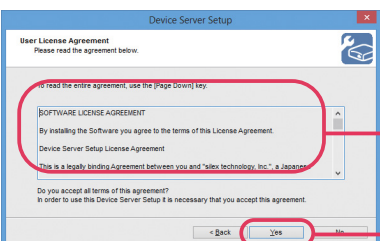
- 2  Click **Device Server Configuration**.

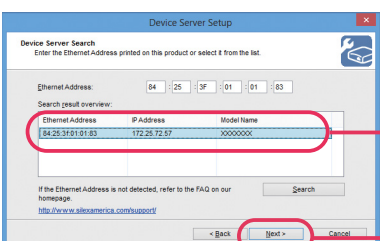
- 3  Click **Configure using the setup utility (Recommended)**.

\*If the **User Account Control** message is displayed, click **Yes** or **Continue**.

- 4  Click **Yes**.

- 5  Click **Next**.

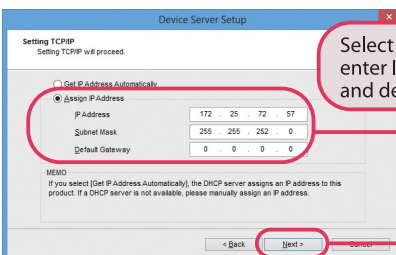
- 6  Read the agreement.  
Click **Yes**.

- 7  Select the product.  
Click **Next**.

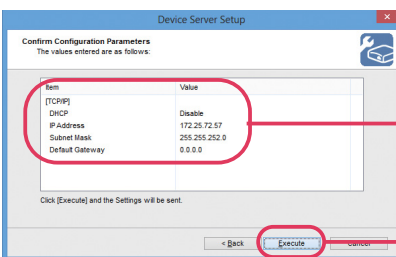
## Note

If an IP address other than 0.0.0.0 is displayed in the list, it is possible to use the address automatically obtained from a DHCP server.

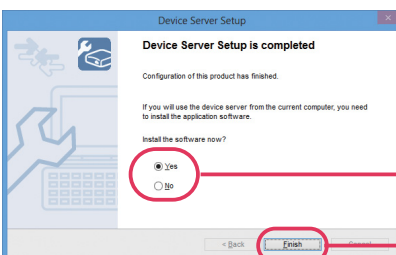
- If you wish to use the obtained address, you do not have to configure the following settings. Click **Cancel** and go on to install the application. (Please see the **SX Virtual Link Installation** guide.)
- If you wish to configure the IP address manually, continue to "8".

- 8  Select **Assign IP Address** and enter IP address, subnet mask and default gateway.  
Click **Next**.

\* When the window without the option, "**Get IP Address Automatically**" is displayed, please enter the IP address (mandatory), subnet mask and default gateway.

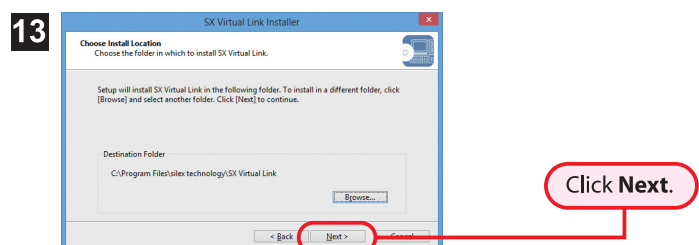
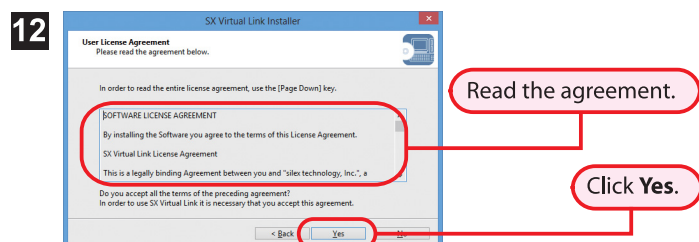
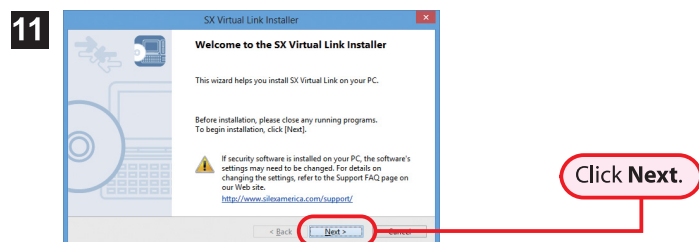
- 9  Check the settings.  
Click **Execute**.

\* The settings displayed here will vary depending on the configuration you made.

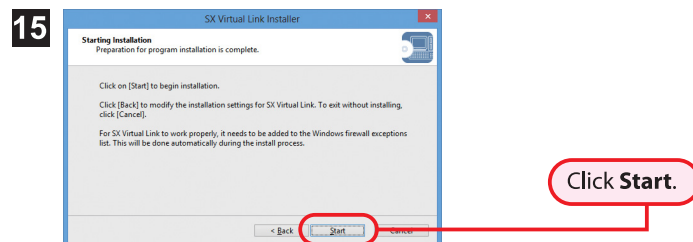
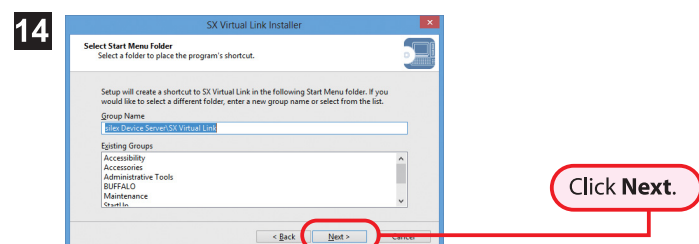
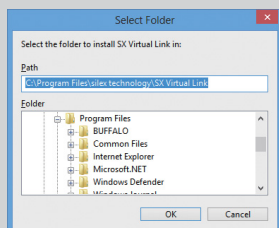
- 10  Click **Yes**.  
Click **Finish**.

\* Select **No** when you do not want to install SX Virtual Link.

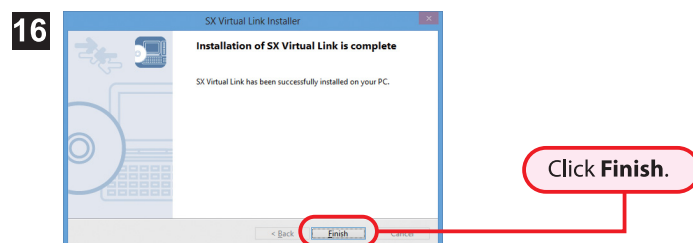
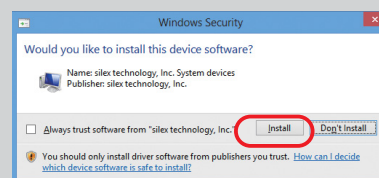
This document explains how to install SX Virtual Link to a Windows PC. Follow the instructions below to install SX Virtual Link.



By clicking the **Browse** button, you can choose the folder to install SX Virtual Link into.



When Windows Security screen is displayed, click **Install**.



\*Restart your PC if it is required by the system.

## Customer Support

### USA : silex technology america, Inc.

E-mail : support@silexamerica.com

URL : http://www.silexamerica.com/

Phone : 1-866-765-8761

### Europe : silex technology europe GmbH

E-mail : support@silexeurope.com

URL : http://www.silexeurope.com/

Phone : +49-(0)2151-65009-0