

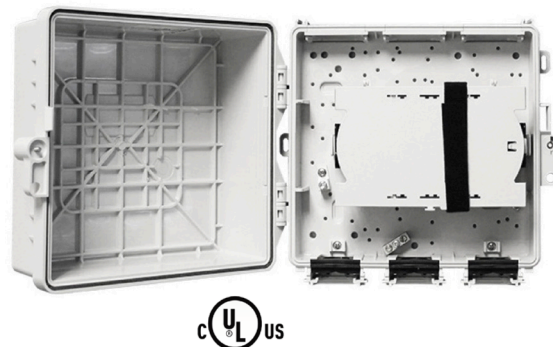
FutureLink® Splice Only Enclosures



Features & Benefits

- Lightweight, compact footprint for indoor and outdoor use
- Slack storage with fiber spools to control bend radius
- Doors with push-to-latch, locking hasp & 216-tool security bolt
- Cable ports equipped with flat rubber grommets
- Molded-in feet for easy wall mounting; pole-mount kit also available
- Dual ground block and single tie-down ground lug
- Compatible with all SFIT Nozzles

- **BABA compliant options available**



Overview

The PPC family of enclosures offers a flexible and cost effective solution for fiber network deployments. Stackable Fiber Interface Terminal (SFIT) Splice Only Terminals are ideal for use with splice-ready cables. Their compact footprint and intuitive cable routing makes them the right choice for network deployments where wall space is critical. The SFIT Splice Only Terminals are ideal for use inside IDF closets or on the outside wall of small multi-dwelling units (MDUs) as a demarcation point. These terminals can be stacked onto other SFITs for added capacity. They provide full-size splice trays with fiber routers to maintain minimum bend radius requirements.

Technical Data

Specification	Value
Dimensions (W x H x D)	SNID-F3 Series: 10 in x 6 in x 5 in SNID-F6 Series: 10 in x 9 in x 5 in SFIT-FL Series: 10 in x 9 in x 5 in
Materials	UL 94V-0 (indoor) and UL 94-5VA (outdoor) light gray flame retardant PBT/PC blend
Safety	UL1863
Performance	Designed to meet GR-049-CORE, GR-2898-CORE & GR-3125-CORE

Ordering Information

Part Number	Description
• SNID-F300NSNN	Splice only with one 12F/24F splice tray, three flat rubber grommets, two single tie down ground lugs, dual tie down ground block, cable ties and bases (room for two 12F/24F splice trays)
• SNID-F600NSNN	Splice only with one 12F/24F splice tray, three flat rubber grommets, two single tie down ground lugs, one dual tie down ground block, cable ties and bases (room for three 12F/24F splice trays). Packaged 4 per carton box.
• SNID-F600NSNN-02	Splice only with two 12F/24F splice trays, three flat rubber grommets, two single tie down ground lugs, one dual tie down ground block, cable tiedown brackets (room for three 12F/24F splice trays). Packaged 4 per carton box.
• SFIT-FL00NSNN	Splice only with one 12F/24F splice tray, three flat rubber grommets, two single tie down ground lugs, one dual tie down ground block, cable ties and bases (room for two 12F/24F splice trays). Can add onto existing SFIT Enclosures.
• SFIT-FL01AJNNNNNNN	Splice only with one 12F/24F splice tray, three flat rubber grommets, cable ties and bases, pole mount brackets
• SFST-24SFC	12F/24F Stackable Splice Tray – holds up to 24 single-fusion splices (two layers of 12 each)

- = BABA Compliant Product

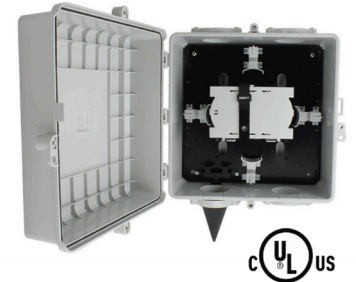


FutureLink® Splice Only Enclosures



Features & Benefits

- Six splice tray capacity in the standard design
- Splice tray holds up to 24 single-fusion splices (two layers of 12)
- Door has push-to-latch, locking hasp & 216-tool security bolt (3)
- Four cable access ports with removable caps
- Includes four screw-on feet for easy wall mounting
- Can be pole-mounted with Pole Mount Bracket kit (UCS-PMB)
- Stackable design allows coupling with other UCS enclosures, such as slack storage, using SCC-UUF coupler kit (one per port)
- Designed for indoor and outdoor use



Overview

The PPC FutureLink® family of enclosures offers a flexible and cost-effective solution for fiber network deployments. Craft-friendly, expandable “grow as you go” designs support both greenfield and brownfield projects, and can be used for indoor or outdoor applications. These Universal Closure System (UCS) Splice Only Enclosures ship with splice trays capable of holding up to 24 single fusion splices. These enclosures can be installed in an indoor IDF closet, or on the outside wall of smaller multi-dwelling units (MDUs) as a demarcation point. They can be stacked with other UCS enclosures, such as a slack storage enclosure, to provide additional functionality.

Technical Data

Specification	Value
Dimensions (W x H x D)	14.0 in x 14.0 in x 8.0 in (355.6 mm x 355.6 mm x 203.2 mm)
Materials	UL 94V-0 (indoor) and UL 94-5VA (outdoor), flame retardant PBT/PC blend thermoplastic, light gray
Safety	UL1863
Performance	Designed to meet GR-049-CORE, GR-3125-CORE & GR-2898-CORE

Ordering Information

Part Number	Description
UCS-FS72XSNN-JB	12F-24F UCS Enclosure with one 12F/24F splice tray, fiber routers for slack storage and one Rubber Cone Grommet port (room for six 12F/24F splice trays)
UCS-24XSNN-CL	24F-48F UCS Enclosure with two 12F/24F splice trays, fiber routers for slack storage and one Rubber Cone Grommet port (room for six 12/24F splice trays)
UCS-36XSNN-CL	36F-72F UCS Enclosure with three 12F/24F splice trays, fiber routers for slack storage and one Rubber Cone Grommet port (room for six 12F/24F splice trays)
UCS-72XSNN-CL	72F-144F UCS Enclosure with six 12F/24F splice trays, fiber routers for slack storage and two Rubber Cone Grommet ports
• SFST-24SFC	12F/24F Stackable Splice Tray – holds up to 24 single-fusion splices (two layers of 12 each)

• = BABA Compliant Product

