

Splice Only Terminals



The PPC family of enclosures offers a flexible and cost-effective solution for fiber network deployments. Craft-friendly, expandable “grow as you go” designs support both greenfield and brownfield projects, and can be used either indoors or outdoors.

The SFIT (Stackable Fiber Interface Terminal) is the small-to-midsized solution; the UCS (Universal Closure System) handles the larger requirements. Both lines offer a variety of network functions.

Description

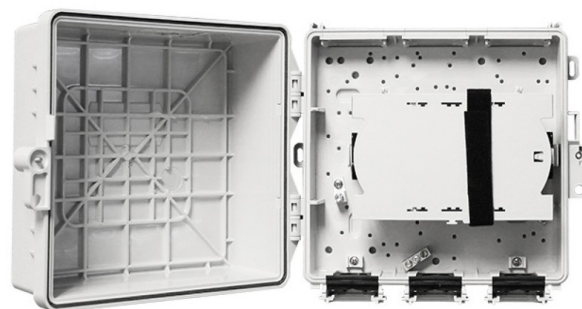
The PPC SFIT Splice Only Terminal is designed for use with raw fiber cables; for example splicing pigtails or drops to feed cables, or joining multi-fiber cables together.

The enclosure ships with a single splice tray, capable of holding up to twenty-four single fusion splices. A second tray can be added. The enclosure can be installed indoors in an IDF closet, or on the outside wall of smaller MDUs as a demarcation point.

The enclosure can be stacked with other SFIT terminals, such as a slack storage enclosure, to provide additional functionality.

Features

- Ships with a single splice tray
- Splice tray holds up to 24 single-fusion splices (two layers of 12)
- Fiber guide spools to ensure optimal fiber bend radii
- Strength member tie-downs and ground lug
- Door has push-to-latch, locking hasp & 216-tool security bolt
- Cable ports equipped with flat rubber grommets
- Molded-in feet for easy wall mounting
- Pole mountable with Pole Mount Bracket kit (SFIT-POLEMTG-10)
- Stackable design allows slack storage enclosure to be coupled
- Designed for indoor and outdoor use
- Small footprint for use in tight spaces
- A variety of cable port nozzles are available



SFIT-FL00NSNN

Specifications

- Dimensions:** 9" H x 10" W x 4.7" D
- Materials:** Flame retardant PBT/PC blend thermoplastic, UL 94V-0 (indoor)/UL 94-5VA (outdoor) rated
- Safety:** UL1863 cULus
- Performance:** Designed to meet GR-049-CORE, GR-3125-CORE & GR-2898-CORE. Adapters and connectors exceed the requirements of GR-326-CORE.
- Finish:** Light Gray

Part No.	Description
SFIT-FL00NSNN	SFIT Splice Only Terminal with one splice tray (max of 2 trays). Three cable entry ports with flat rubber grommets
SFST-24SFC	Splice Tray (expansion) – holds up to 24 single-fusion splices (two layers of 12 each)

Splice Only Terminals



The PPC family of enclosures offers a flexible and cost-effective solution for fiber network deployments. Craft-friendly, expandable “grow as you go” designs support both greenfield and brownfield projects, and can be used either indoors or outdoors.

The SFIT (Stackable Fiber Interface Terminal) is the small-to-midsized solution; the UCS (Universal Closure System) handles the larger requirements. Both lines offer a variety of network functions.

Description

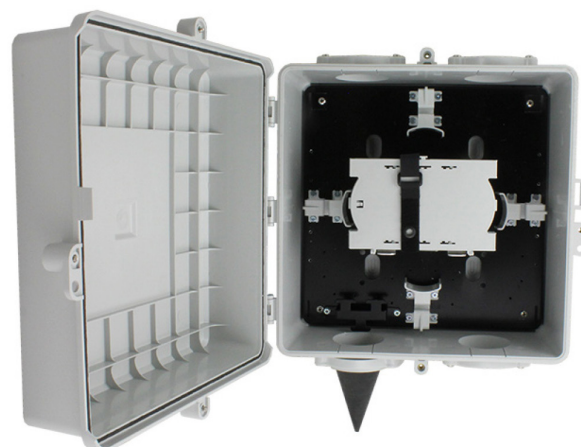
The PPC UCS Splice Only Enclosure is designed for use with raw fiber cables; for example splicing pigtails or drops to feed cables, or joining multi-fiber cables together.

The enclosure ships with a single splice tray, capable of holding up to twenty-four single fusion splices. Up to five additional trays can be added. The enclosure can be installed indoors in an IDF closet, or on the outside wall of smaller MDUs as a demarcation point.

The enclosure can be stacked with other SFIT terminals, such as a slack storage enclosure, to provide additional functionality.

Features

- Ships with a single splice tray
- Splice tray holds up to 24 single-fusion splices (two layers of 12)
- Up to five additional splice trays can be added
- Fiber guide spools to ensure optimal fiber bend radii
- Strength member tie-downs and ground lug
- Door has push-to-latch, locking hasp & 216-tool security bolt (3)
- Four cable access ports with removable caps
- Ships with one rubber cone grommet/brush disk (UCS-G2)
- Includes four screw-on feet for easy wall mounting
- Can be pole-mounted with Pole Mount Bracket kit (UCS-PMB)
- Stackable design allows coupling with other UCS enclosures, such as slack storage, using SCC-UUF coupler kit (one per port)
- Designed for indoor and outdoor use



UCS-FS72XSNN-JB

Specifications

Dimensions: 13" H x 13" W x 8" D

Materials: Flame retardant PBT/PC blend thermoplastic, UL 94V-0 (indoor)/UL 94-5VA (outdoor) rated

Safety: UL1863 cULus

Performance: Designed to meet GR-049-CORE, GR-3125-CORE & GR-2898-CORE. Adapters and connectors exceed the requirements of GR-326-CORE.

Finish: Light Gray

Part No.	Description
UCS-FS72XSNN-JB	UCS Splice Only Terminal with one splice tray (max of 6 trays). Four cable entry ports, one port with rubber cone grommet.
SFST-24SFC	Splice Tray (expansion) – holds up to 24 single-fusion splices (two layers of 12 each)