

Empty Enclosures



The PPC family of enclosures offers a flexible and cost-effective solution for fiber network deployments.

Craft-friendly, expandable “grow as you go” designs support both greenfield and brownfield projects, and can be used either indoors or outdoors.

The SFIT (Stackable Fiber Interface Terminal) is the small-to-midsize solution; the UCS (Universal Closure System) handles the larger requirements. Both lines offer a variety of network functions.

Description

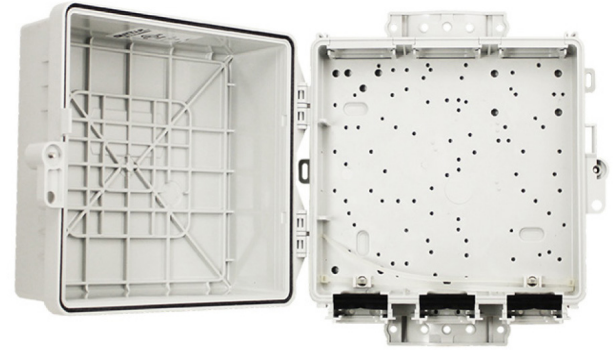
The PPC SFIT Empty Enclosure is a compact, lightweight solution for mounting and protecting a wide range of network components.

It can be used as a transition housing, where OSP cables pass into a building. A large number of mounting bosses in the base can be used to mount passive devices.

Three cable ports with rubber grommets provide for easy cable entry paths. Mounting brackets are included to attach the enclosure to a variety of pole sizes and types.

Features

- Base has numerous screw hole bosses for attaching equipment
- Designed to meet NEMA 3R
- Pole mount brackets are included
- Door has push-to-latch, locking hasp & 216-tool security bolt
- Three cable ports equipped with flat rubber grommets
- Molded-in feet for easy wall mounting
- Small footprint for use in tight spaces
- Designed for indoor and outdoor use
- A variety of cable port nozzles are available



SFIT-FL00NNNN-001

Specifications

- Dimensions:** 9.3" H x 10" W x 4.7" D
- Materials:** UL 94V-0 (indoor) and UL 94-5VA (outdoor) flame retardant PBT/PC blend thermoplastic
- Safety:** UL1863 cULus
- Performance:** Designed to meet GR-3123-CORE & GR-3125-CORE.
- Finish:** Light Gray

Part No.	Description
SFIT-FL00NNNN-001	SFIT Empty Enclosure, with pole mount brackets. Three cable entry ports with flat rubber grommets

Empty Enclosures



Description

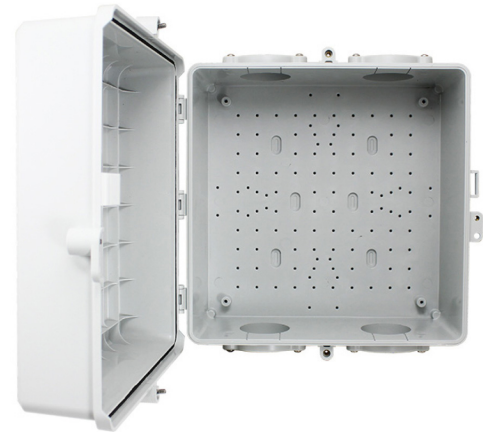
The PPC UCS Empty Enclosure is the solution when more space is required. Its rugged design, molded from a UV-stable, flame-retardant thermoplastic, can withstand harsh installation environments.

Four wide cable entry ports give the installer flexibility for cable routing. A large field of mounting bosses can be used to attach passive devices and cable guides.

An aluminum backboard can be added for additional mounting configurations.

Features

- Designed to meet NEMA 3R
- Base has field of screw hole bosses for attaching equipment
- Aluminum backboard can be added for additional mounting options
- Four large cable entry ports support multiple cables and sizes
- Four screw-on feet offer easy wall mounting
- Optional kit available for pole mounting (UCS-PMB)
- Door has push-to-latch, locking hasp & 216-tool security bolt (3)
- Stackable design allows coupling with other UCS enclosures using SCC-UUF coupler kit (one per port)
- Designed for indoor and outdoor use
- See FutureLink Accessories brochure for optional port caps, couplers and fiber guides



UCS-13138-61CL

Specifications

Dimensions: 13" H x 13" W x 8" D

Materials: UL 94V-0 (indoor) and UL 94-5VA (outdoor) flame retardant PBT/PC blend thermoplastic

Safety: UL1863 cULus

Performance: Designed to meet GR-3125-CORE & GR-2898-CORE.

Finish: Light Gray

Part No.	Description
UCS-13138-61CL	UCS Empty Enclosure, with four cable entry ports
UCS-PMB	Pole Mount Bracket Kit for UCS
UCS-BB	Aluminum backboard for empty UCS enclosure