

Fiber Wall Plates



Description

The PPC Fiber Interface Wall Plates are an in-home fiber interconnect point in a compact single gang size. This wall plate allows flexibility in access and storage. Access options include inside connections or external connections at end or at an angle.

Features

- Single-gang junction box mounting
- Knockout ports at upper corners allow surface mounting
- Design keeps exiting fiber jumper close to wall for protection
- SC/APC adapter is standard; SC/UPC available on some models
- Second adapter can be added
- Choice of adapter position: internal (for protection) or external (for easy access)
- External adapters have spring-loaded trap doors for safety
- Integrated splice tube holder for use with raw drop cables and pigtails
- Slack storage spool holds up to 5 feet of 3mm cable
- Snap on cover with security screw

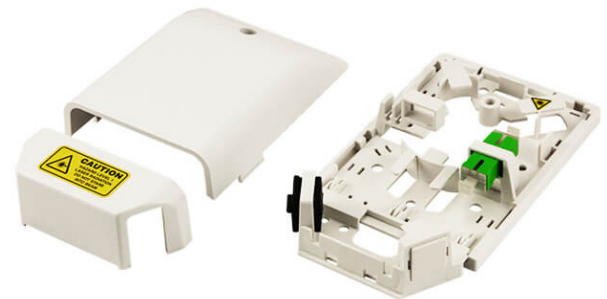
Specifications

Dimensions: 4.9" H x 3.5" W x 1.2" D
(6.1" H with the extension base/cover)

Materials: High impact, UL 94V-0 rated thermoplastic

Safety: UL1863 cULus

Performance: Designed to meet GR-3123-CORE and GR-3125-CORE
Adapters meet or exceed GR-326 -CORE



CON-13X5-85



CON-44X7-85



CON-13X6-85

Part No.	Description
CON-13X5-85	Single gang fiber wall plate; angled cover, internal SC/APC adapter
CON-13X5-85U	Single gang fiber wall plate; angled cover, internal SC/UPC adapter
CON-44X7-52 CON-44X7-85	Single gang fiber wall plate; flat cover, external SC/APC adapter with trap door
CON-13X6-85	Single gang fiber wall plate; angled cover, external SC/APC adapter with trap door
Color: (-85) White, (-52) Elec Ivory	