

The PPC family of enclosures offers a flexible and cost-effective solution for fiber network deployments. Craft-friendly, expandable “grow as you go” designs support both greenfield and brownfield projects, and can be used either indoors or outdoors.

The SFIT (Stackable Fiber Interface Terminal) is the solution when excess drop cable needs to be stored, or in brownfield installations when older copper NIDs are being replaced.

The DTS (Drop Terminal System) offers a design that is ideal for greenfield projects when a small footprint is critical.

Description

These PPC SFIT SFU Fiber NID is a compact, installer-friendly enclosure for service distribution to residential and commercial customers. Its flexible design makes it ideal for a variety of FTTH deployments.

Designed to offer a seamless transition point from the OSP hardened cable to the indoor premise distribution cable, the SFIT includes slack storage management and a number of other useful features.


Features

- Includes one SC/APC adapter, with space for a second
- Adapter mounting clip can be rotated to place adapter inside or outside the cable loops
- Fiber guides for both feed and distribution cables
- Typical slack capacity: 30' of outside drop and 15' of 3mm inside
- Molded-in splice chip holds two fusion-splice tubes
- Terminal post for tracer wire tie-down and testing
- Strength member tie-down (two possible mounting locations)
- Feed-through grommet in base allows inside cable to enter wall
- Two external cable ports equipped with flat rubber grommets
- Cable tie-downs are integrated into the ports
- Molded-in feet for easy wall mounting
- Door has push-to-latch, locking hasp & 216-tool security bolt
- Slack Storage enclosure can be coupled to bottom for added capacity
- Pole mountable with Pole Mount Bracket kit (SFIT- POLEMTG-10)
- A variety of cable port nozzles are available



SFIT-FK01AJN-002

Specifications

- Dimensions:** 9" H x 10" W x 2.9" D
- Materials:** UL 94V-0 (indoor) and UL 94-5VA (outdoor) flame retardant PBT/PC blend thermoplastic
- Safety:** UL1863  US
- Performance:** Designed to meet GR-049-CORE, GR-2898-CORE & GR-3125-CORE. Adapter exceeds the requirements of GR-326-CORE.
- Finish:** Light Gray

Part No.	Description
SFIT-FK01AJN-002	SFIT SFU Fiber NID, with one SC/APC adapter and slack storage.. Two cable entry ports with flat rubber grommets

Description

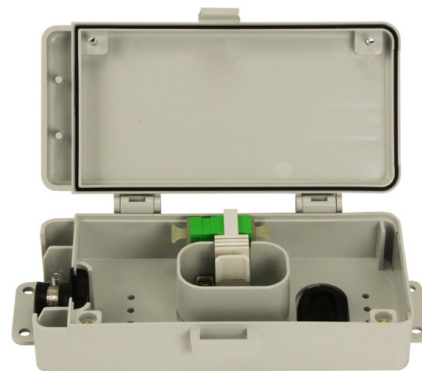
The PPC Drop Terminal System is a compact enclosure designed to protect the transition from the outside plant cable to indoor-rated drop in SFU applications. The terminal's design offers a sleek and unobtrusive profile on the exterior of singlefamily homes. The U-channel protects the incoming cable from the environment as well as dresses up the appearance.

The Drop Terminal includes a single SC/APC adapter for quick connection of the outdoor and indoor fibers. The inbound cable is easily installed, with a lay-in grommet and clamp at the entrance and a strength member tie-point inside. A grommet on the rear of the terminal protects the indoor drop fiber as it enters the dwelling.

The U-channel base fastens to the side of the dwelling, the cover snaps in place and is secured with a captive screw (216 tool compatible). The U-channel and Drop Terminal couple together to provide complete protection for the incoming cable. Additional sections of U-Channel can be used for longer feed cable runs.

Features

- Low profile and small footprint offer a low-impact appearance on the SFU dwelling
- Compact size, intuitive cable routing and easy assembly make for a quick, single-person installation
- Outdoor or indoor applications
- Weather tight to wind-driven rain, designed to meet GR standards
- Single SC/APC adapter for quick connection
- Internal radius-limiting controls ensure cable bend requirements are met
- Lay-in grommet and exterior cable tie accept flat drop cable
- Internal strength member tie-down holds feed cable securely
- U-channels can be stacked to protect longer feed cable runs



DTS-01AC



SUC-02-24-C

Specifications

Dimensions:

DTS-01AC: 7.3" H x 3.8" W x 1.7" D

SUC-02-24-C: 24.6" H x 2.2" W x 1.1" D

Materials:

UL 94V-0 (indoor) and UL 94-5VA (outdoor) flame retardant PBT/PC blend thermoplastic

Safety:

UL1863  US

Performance:

Designed to meet GR-049-CORE, GR-2898-CORE, GR-3125-CORE, UL1863. Adapter exceeds the requirements of GR-326-CORE.

Finish:

Light Gray

Part No.	Description
DTS-01AC	Drop Terminal with one SC/APC adapter
SUC-02-24-C	U-Channel, stackable.