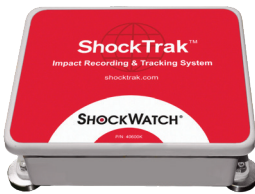


SpotSee Impact Recorders

SpotSee Impact and Environmental Recorders monitor critical parameters and provide evidence that a shipment, equipment, or building has experienced conditions that may have compromised its integrity, performance, or safe operation.



SpotBot Cellular

Delivers tri-axial impact monitoring and live tracking through cellular connectivity with visualization through the SpotSee Cloud.

ShockTrak

Combines flagship ShockLog 298 Impact Recorder with GPS that delivers outstanding impact recording, real-time reporting, and asset location.

ShockLog 298

Records the date and time of up to 870 shock events, vibration, peak values (x,y, and z), internal temperature and summary data.

ShockLog 248

Records the date and time of up to 15 shock events, peak values (x, y, and z), internal temperature and summary data.

SpotBot BLE

A low-cost, simple recorder with data connection via Bluetooth to free mobile application.

g-View

A low-cost option ideal for monitoring excursions (x, y, and z) and internal temperature.

Impact Monitors

SpotSee's impact and environmental recorders continually monitor and record the shock, vibration and environmental conditions experienced by structures, facilities and equipment during transit, storage and operation.

These products record the direction, amplitude, and duration of impacts and internal temperature. Optional sensors record temperature, humidity, atmospheric pressure, tilt and roll. A GPS/ GPRS tracking module is available to pinpoint the location of mishandling or exposure to unfavorable conditions. SpotSee recorders help deter, monitor and minimize damage.

Benefits

- Helps identify optimal modes of transportation, routes, packaging, storage options, and operational conditions through full-journey profiling
- Deters improper handling and operation
- Alerts recipients and operators to inspect goods and equipment for potential damage
- Isolates when and where unacceptable conditions occur and aids in the identification of accountable parties
- Allows for corrective action in cases of potential impact, vibration, tilt, roll, temperature, humidity, and pressure extremes
- Pinpoints potential areas for improvement in operational or shipping and handling processes
- Confirms acceptable conditions during equipment operation, shipping and handling, and storage

Shared Features

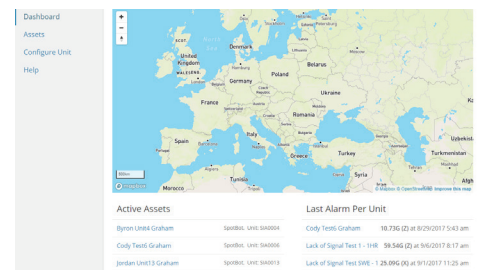
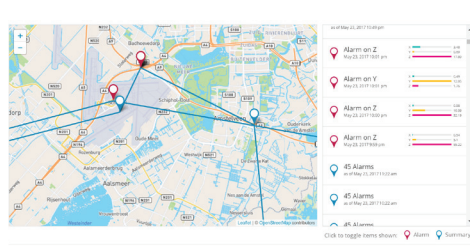
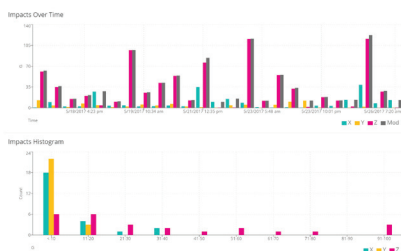
- Field-proven triaxial piezoelectric accelerometer technology
- Self-contained unit design, free of cables and wires
- User-definable alarm levels
- LED lights for visual notification



The SpotSee Cloud is where trip data is aggregated in real-time. The cloud features visualizations for multiple units. The graphs are easy to read and include data such as specifics of impact with locations, impacts over time, histogram, and temperature.

SpotSee Cloud Features

- Access to data from wherever you are with a dedicated web portal
- Real-time reporting and tracking of incidents
- Alarms with location, time, impact g-level, and direction of impact
- Impacts-over-time visualization of each asset
- Histogram the asset's impacts

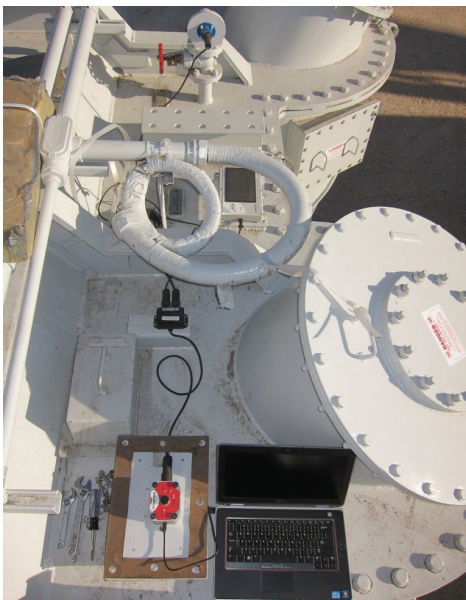


Real-time Reporting

The SpotSee cloud tracks location and impacts in real-time. This information is sent to the cloud at predetermined intervals so you always know the status of your asset.

Detailed Impact Alarm Data

See all your asset alarms including location, time, impact g-level, and direction of impact. The data visualizes impacts over time so you can easily spot the higher outliers. The histogram is a quick view of the units impacts grouped by g-level so you know quickly if there are any potentially damaging impacts.



Feature Comparison Guide

	SpotBot Cellular	ShockTrak	ShockLog 298
Selection Criteria	Threshold monitor with cellular communication / location	Complete journey profiling with GPS location and satellite communication	Complete journey profiling Expandability for future requirements Vibration (gRMS) monitoring
Recorder Type	Threshold	Complete event & max peak	Event & time slot (max peak)
Standard Measurements	Triaxial over threshold and internal temperature	Triaxial acceleration, max peak, internal temperature	Triaxial acceleration, gRMS vibration, max peak, and internal temperature
Number of Events	Unlimited in cloud; top 10 in PDF; top 50 in CSV	Unlimited in cloud; up to 870 on device	Up to 870
Amplitude Scale	65G max	User programmable: 1G, 3G, 10G, 30G, 100G, or 200G	User programmable: 1g, 3g, 10g, 30g, 100g or 200g
Frequency Filter	N/A	User programmable: 10Hz, 40Hz, 50Hz, 90Hz, 120Hz or 250 Hz	User programmable: 10Hz, 40Hz, 50Hz, 90Hz, 120Hz, 250Hz
Battery Life	Up to 75 days	Up to 1 year	Up to 18 months Two AA size 3.6V lithium batteries recommended
Expandability	N/A	Tilt & roll	Temperature/Humidity Temperature/Humidity/Pressure/Tilt and Roll GPS Coordinates
Alert	LED; notification via SpotSee Cloud	LED; notification via SpotSee Cloud	LED - running, warning, and alarm
Data Transfer/Communication	USB, Cellular	USB, Satellite	USB & i-Button interface Optional RF interface
Ingress Protection	IP67	NEMA 1, 3, 4x, 6P, 12	IP67

	ShockLog 248	SpotBot BLE	g-View
Selection Criteria	Full-journey profiling impact recorder at a low price point	Low-cost threshold monitor with BLE phone app	Low-cost threshold monitor; simple software with export to Excel
Recorder Type	Event & time slot (max peak)	Threshold	Event threshold
Standard Measurements	Triaxial acceleration and max peak and internal temperature	Modulus over threshold (impact), temperature, humidity, tilt & roll	Triaxial over threshold and internal temperature
Number of Events	Up to 15 (1st plus 14 most significant)	2 year (15 min measuring cycle) memory capacity	Up to 100 per axis
Amplitude Scale	Fixed scale: 10g, 30g or 100g	8G max	Fixed scale: 10g or 25g
Frequency Filter	Fixed value: 40Hz, 90Hz, 250Hz	n/a	Fixed value: 25Hz or 40Hz
Battery Life	Up to 12 months. One AA size 3.6V lithium battery recommended	2 years (10 min measuring cycle)	Up to 6 months Single AA alkaline
Expandability	Temperature/Humidity	n/a	N/A
Alert	LED - running and alarm	LED	LED - alarm
Data Transfer/Communication	USB & i-Button interface	BLE	i-Button interface
Ingress Protection	IP67	IP54	IP65