

The ShockTrak Impact and Tracking recorder combines the powerful impact and environmental recording capabilities of the ShockLog 298 Impact Recorder with a satellite location/tracking module to deliver outstanding impact recording, real-time impact reporting and asset location around the globe.

ACTIVATING THE SHOCKTRAK

In order to activate the ShockTrak air time contract, please go to shocktrak.com/activate and complete the activation form. It takes one (1) business day for the contract to become active.

PROGRAMMING THE SHOCKTRAK

The ShockLog recorder must be programmed prior to use. For complete details on programming the device, please refer to the ShockLog Essentials User Manual. The manual can be located on the ShockLog software installation CD.

When programming the ShockLog 298 Impact Recorder, it is important to set a summary interval such that the memory and batteries will last for the anticipated journey time. Consult the table below for determining the best summary interval and for setting up appropriate battery replacement intervals.

| Summary Interval | ShockLog Memory Full* | ShockTrak Satellite Module Internal Battery Life | ShockTrak Satellite Module External Battery Life | Interface Board Battery | ShockLog Battery |
|------------------|-----------------------|--|--|-------------------------|------------------|
| 1 hour | 42 days | 3 months | 60 days | 12 months | 12 months |
| 2 hours | 85 days | 3 months | 60 days | 12 months | 12 months |
| 4 hours | 5.5 months (170 days) | 6 months | 75 days | 12 months | 12 months |
| 8 hours | 11 months (341 days) | 12 months | 90 days | 12 months | 12 months |
| 12 hours | 16 months (512 days) | 18 months | 90 days | 12 months | 12 months |

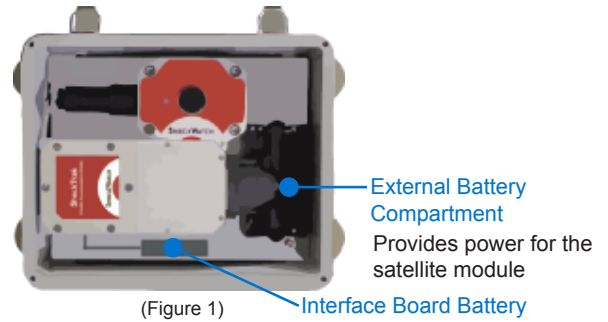
*When the ShockLog memory is full, only alarms will be reported not summaries.

POWERING THE SHOCKTRAK

All required lithium batteries for the ShockLog and ShockTrak Satellite module are installed at the factory unless otherwise arranged with SpotSee. (Figure 1)

CAUTION - RISK OF EXPLOSION IF BATTERY IS REPLACED BY AN INCORRECT TYPE. DISPOSE OF USED BATTERIES ACCORDING TO THE INSTRUCTIONS.

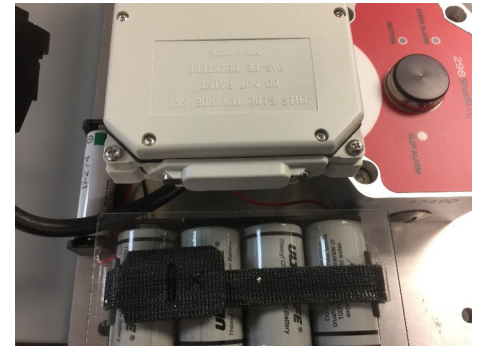
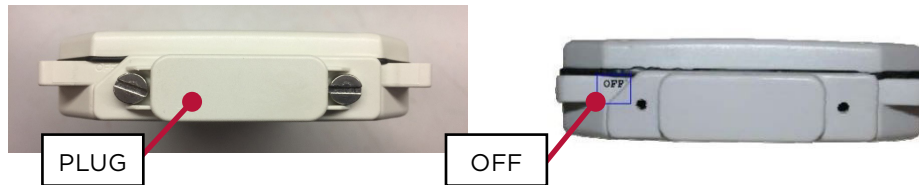
Note: Operating the ShockTrak in a location without line of sight to the sky will significantly reduce the battery life of the satellite module.



| Component | Battery Type | Qty |
|---------------------------------------|---------------------------|-----|
| ShockLog | 3.6V AA Lithium Batteries | 2 |
| Interface Board Battery | 3.6V AA Lithium Battery | 1 |
| ShockTrak Satellite Module (Internal) | 1.5V AA Lithium Batteries | 4 |
| ShockTrak Satellite Module (External) | 3.6V C Lithium Batteries | 4 |

CONNECTING THE SHOCKTRAK SATELLITE MODULE AND SHOCKLOG RECORDER

The ShockTrak satellite module and the ShockLog must be connected prior to use. A plug on the satellite module covers the communication port between the module and the ShockLog.



Prior to use, the module will show "OFF" on the end of the module.

Unscrew the plug and remove.

Connect the black connector / cable to the communication port of the satellite module.

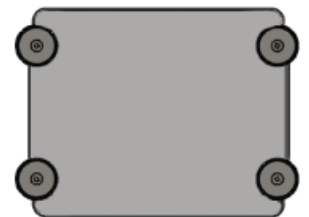
Keep the plug in a safe place as it will be used to turn the device off when not in use.

MOUNTING THE SHOCKTRAK

It is recommended that you mount the unit prior to starting it. This prevents any impacts being recorded during the mounting process.

- Find suitable mounting location on asset with line of sight to the sky.
- The ShockTrak has x, y, and z axes noted on the unit. If the mounting of the ShockTrak does not allow you to match the axes of the unit, it is advisable to make note of the exact mounting in order to correctly analyze the reported impact values.
- To adhere, position two magnets in place and then carefully roll the last two magnets into position. (Figure 2)

Note: Magnetic mounts are intended for temporary mounting.



(Figure 2)

STARTING THE SHOCKTRAK

It is recommended that the START iButton be used to start the ShockLog recorder. (Figure 3). The iButton can be stored in the ShockTrak case to allow the unit to be started once mounted.



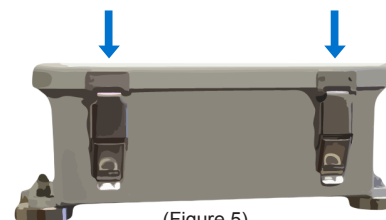
(Figure 3)

- Remove black center cap from ShockLog iButton port. (Figure 4)

- Insert START iButton into iButton port.
 - When iButton LED on ShockLog is red (Figure 4) and Slot Alarm LED is green (Figure 4), remove iButton.
 - Unit will start after one (1) minute
- Close lid and secure latches. (Figure 5)



(Figure 4)

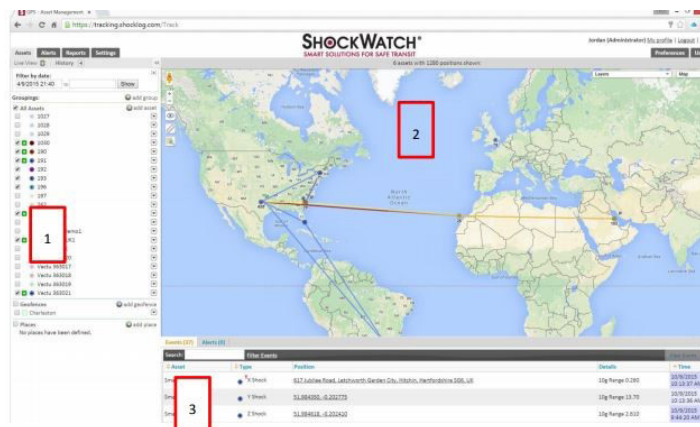


(Figure 5)

ACCESSING THE CLOUD

Go to tracking.shocklog.com to access the ShockLog recorder's impact and location information. On the home page you will see the asset list (1), a map showing the asset location (2) and a list of events / alerts if there are any (3). For a complete description of the ShockTrak cloud, please refer to the ShockTrak User Manual.

When an impact event occurs during the journey, an alert will be sent through the web-hosted application and the ShockLog LED Event Alarm will flash red every five (5) seconds for an alarm condition and every ten (10) seconds for a warning condition.



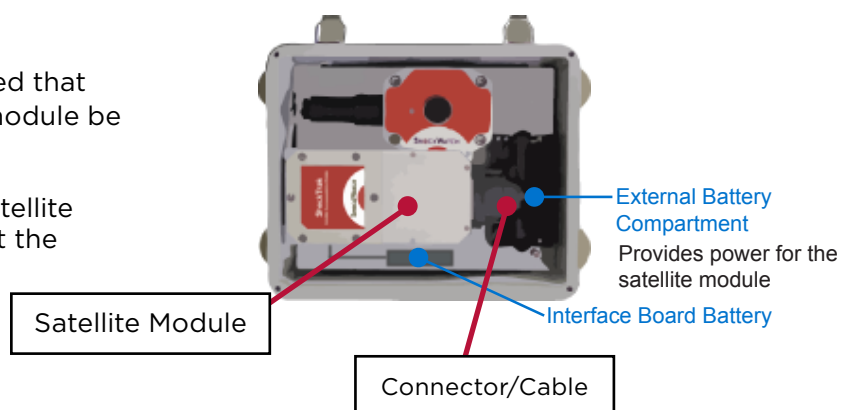
DOWNLOADING THE FULL REPORT

It is possible to use the ShockLog 298 software to analyze any impact events that occur during the trip. To download and analyze the complete data file, please refer to the ShockLog Essentials User Manual.

RECOMMENDED STORAGE

When the unit is not in use, it is recommended that the ShockLog be stopped and the satellite module be turned off.

To turn the satellite module off, locate the satellite module in the ShockTrak box and disconnect the connector / cable.



Locate the plug and insert it into the connector such that the word OFF is visible. Note: If the word ON is visible, you will be powering the module and draining the battery.



SAFETY WARNING



MAGNETIC FIELDS PRESENT

The mounting plate described in these instructions has a magnetic field. Do not locate near pacemakers or other equipment that is sensitive to magnets.

PINCH HAZARD

Mounting ShockTrak may cause injury to hands. Exercise caution to avoid pinching hands and fingers when installing the mounting unit.

FOR QUESTIONS OR TROUBLE SHOOTING PLEASE CONTACT TECHNICAL SUPPORT

Email: techsupport@shockwatch.com

ShockWatch Canada & Americas:

US: +1 800-466-0101 **Outside US:** +1 214-736-4579

ShockWatch Europe, Middle East, Africa: +31.55.7370 148

ShockWatch Asia-Pacific: +86 138-1884-4157