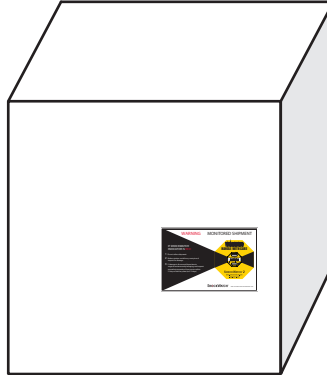
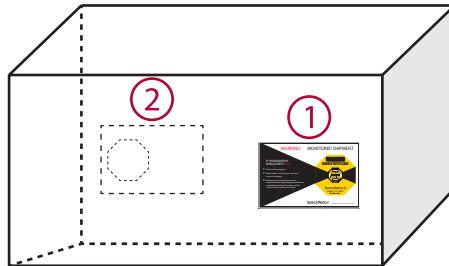


## SHOCKWATCH® 2 Mounting Instructions

1. Mount the ShockWatch 2 Impact Indicator in the lower third of the package/pallet as close to the edge as possible. Avoid the center of the package because the mounting locations should be structurally sound.



2. If the package is twice as long as it is wide, use two ShockWatch 2 Impact Indicators. Place a second indicator in the same position on the opposite side of the package.



3. Place the Alert Sticker on your bill of lading as a reminder to receivers to check the ShockWatch 2 indicator immediately upon arrival.
4. While these instructions are considered best practices, each situation may be different. If you have any questions or would like to reorder, please call 1 (800) 527-9497 or +1 (214) 736-4580 or email: [info@shockwatch.com](mailto:info@shockwatch.com)

Lit # SW2M001  
Revision Date: March 21, 2013