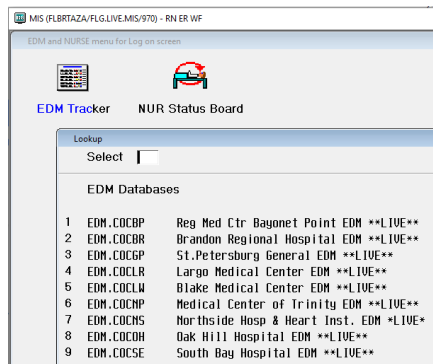


West Florida Division Global RN Access

What this mean for you:

- Nurses have access to all facilities in the West Florida Division (WFDV)
- Nurses have access to multiple modules
 - Other modules are accessed via the MIS option on the Main Menu

Example:



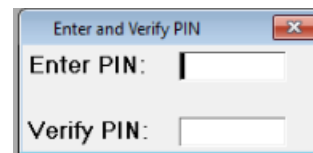
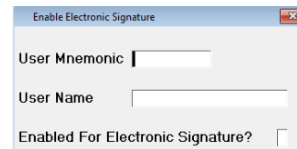
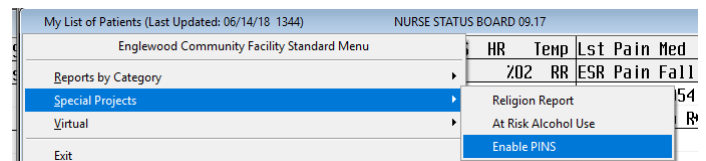
- Nurses will have new Meditech IDs (also known as Mnemonics)
- **Format of new id = 3 + 3/4 (3ABC1234)**

This will require a new PIN at your facility cutover

Obtaining a New PIN

- CHARGE NURSE workstations have been updated to provide PIN access
- Enable PINS is available in NURSING & EDM
- **NURSING module / Print Report Button** – Charge RN will use the ENABLE PINS process
- **EDM module – access via Division NPR Reports** – Charge RN will use the ENABLE PINS process.

Example:



- **Enter new mnemonic (3 + 3/4).** User name will populate.
- Enter (Y) @ Enabled for Electronic signature prompt
- RN to enter PIN at the prompt... Do not have the CHARGE RN enter.

PINS are private. DO NOT share your PIN with anyone.